

Forestry Experts' Network and Database Development

Dr. Guangyu Wang
Executive Office, AP-FECM

Development of Forestry Experts' Network

Experts' Pool will include experts in the area of :

Forest Policy and Management

Climate Change and Sustainability

Forest Protection and Rehabilitation

Wood Production and Trade

Sustainable Forest Management and Certification

Biomass and Bioenergy Development

Forest Planning and Inventory

Forest Biotechnology and Productivity

New Forest-related Materials

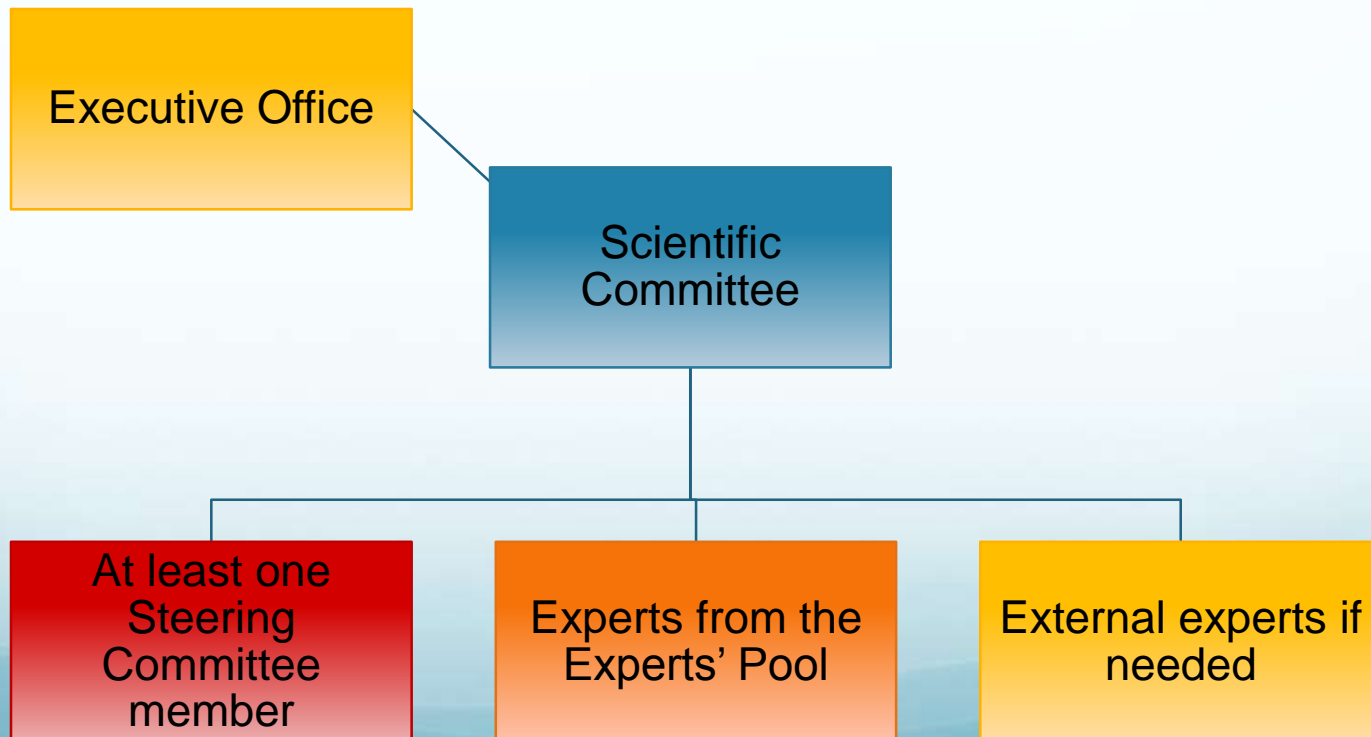
Non-Timber Forest Products and Livelihoods

Forest Communities and Society

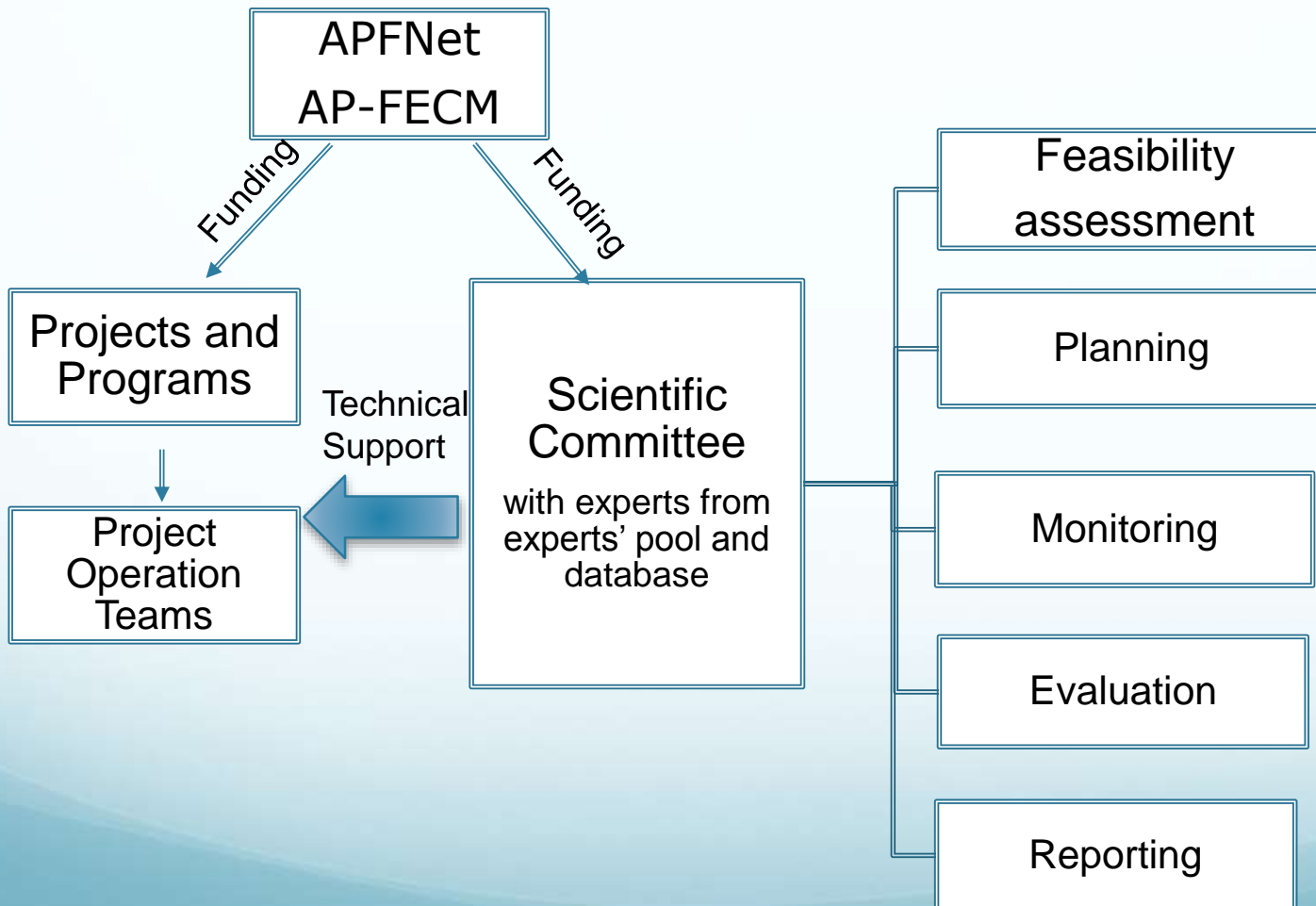
- Each Steering Committee members will suggest 1-2 regional experts to join each category as advisors.
- Nominated experts will be invited to submit a resume describing their relevant experience in the topic
- External international and regional experts will also be welcome to apply to the experts' pool. Eligibility will be determined by the Steering Committee.

Development of Forestry Experts' Network

- Once an activity or project is planned by APFNet or AP-FECM, a Scientific Committee will be established by the Executive Office to assess its feasibility and further support its development from preparation to implementation.



Development of Forestry Experts' Network



Features of Scientific Committee support:

- Project-based technical support including technical reviews of reports and outputs to ensure quality
- Technical support for addressing challenges in projects

Development of Database

- ❖ A database system will manage information about the experts in the Experts' network and all AP-FECM's projects as well as activities.

Data of expert should include:

- Education background
- Field of expertise and interest
- Work history
- Ongoing research
- National/international research projects they are involved in
- Country they reside in

Data of projects should include:

- Duration & schedule
- Progress
- Project team members
- Expert working group members
- Project activities
- Financial records
- Documentations
- Publications

Data of activities should include:

- Time & Location
- Organizer
- Participants
- Theme and activities
- Financial records
- Documentations
- Certification
- Publications

Data of communication strategies should include:

- E-news
- Annual reports
- Feature stories
- ...

- ❖ The database system will have advanced filtering and search functions to find experts based on any combination of criteria. This function will be mainly designed for Forestry Experts' pool.