

Expert Consultation on Global Forest Ressources Assessment

**KOTKA V - Finlande Juin 2006 -**

Briefing of correspondent FRA Congo  
**Particular lesson and suggestion of FRA 2005**

Georges Claver BOUNDZANGA  
 Aménagiste forestier  
 Correspondant FRA - République du Congo

Briefing FRA Congo

**I- ADVANTAGE AND WEAKNESS OF FRA CONGO 2005**

**II- SUGGESTION**

Briefing FRA Congo

**I- ADVANTAGE AND WEAKNESS OF FRA 2005**

**1.1- Advantage of FRA Congo 2005:**

Three key particular. FRA 2005 allowed to :

1° actualize the national database of forestry sector.

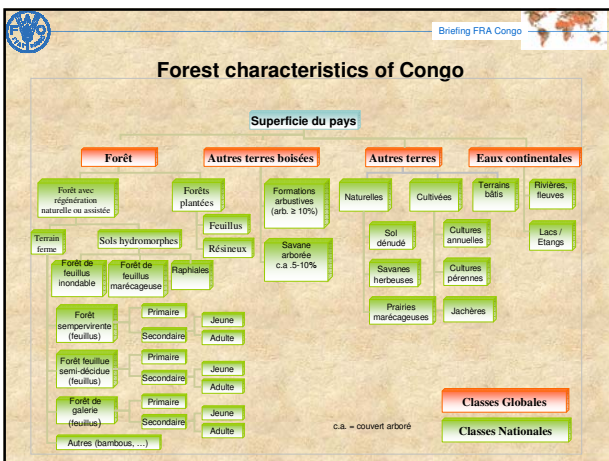
Example of national data about forest area:

- Total area of forest before 2005: 20.000.000 ha
- Total area of forest in FRA 2005: 22.741.271 ha
- Difference: ..... + 2.741.271 ha

Briefing FRA Congo

2° Use the satellite imagery, SIG and teledetection.

3° Propose a new forest characteristics adapted to FRA. this proposition have been validate by national experts:



Briefing FRA Congo

**1.2- The weakness of FRA Congo 2005:**

1° Absence of database from national forestry inventory. Congo has never realised a national forestry inventory

2° Difficulties to get the satellite imagery of Landsat mean captor which produce adapted to local economic situation. Since some time, Landsat Satellite noticed technical problems. Wich anoter captor there are two problem: number and price of imagery.

3° Absence of synergy between correspondent (subregional or regional)

4° Absence of data more liable about socio-economic functions (PFNL, employment, ...).

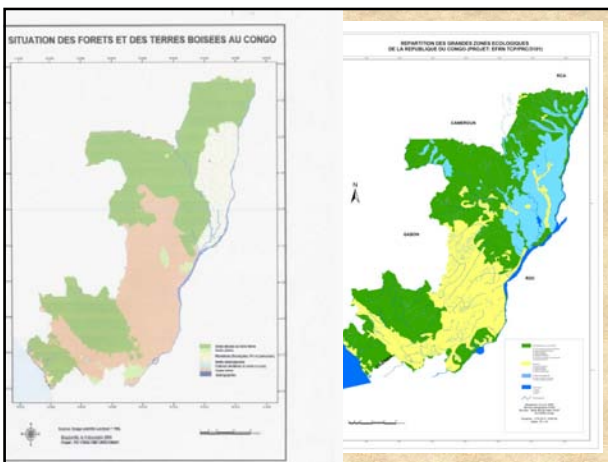
Briefing FRA Congo

## II- SUGGESTION FRA 2010

- 1°- To reinforce synergie between correspondent FRA and a dynamic of FRA by ecoregion or subregion
- 2°- To support the process of national forestry inventory
- 3°- To implice forestry research in the theme where the production of database is yet difficult.
- 4°- To facilitate access to imagery satellite Spot or another captor wich disfunctionning of Landsat Satellite.
- 5°- To set up a unit of teledetection to product and validate a national basic map more liable. More basic map are dispoible.

Briefing FRA Congo

Example of Congo basic map



Briefing FRA Congo

***Thank you for your attention***