



COST Action E43
Harmonisation of National Inventories in Europe:
Techniques for Common Reporting

Global Forest Resource Assessment: Towards FRA 2010
FAO/Metla/UNECE Expert Consultation (Kotka V)

Kotka, Finland, 12-16 June 2006
Erkki Tomppo



Status

- NFI exists in almost all European countries
- over 500 000 visited plots
- NFIs play a central role as national data providers,
part of national forest policy
- From wood production tools to forest ecosystem
monitoring
- Parallel European level data collection systems have
appeared



Need for coordination

- Increasing international requirements for
comparable data
- Sharing of knowledge and expertise
- Taking full advantage of NFIs at EU level



ENFIN – COST Action E43

- Entered into the force June 10, 2004
- Duration: until June 28, 2008
- 27 countries signed the Memorandum of
Understanding (Dec. 31, 2005)
- USA, New Zealand, participating non-cost countries
- More information www.metla.fi/eu/cost/e43



Participating countries:
27 European countries, USA and New Zealand



Cost Action E43 Office holders

- Prof. Erkki TOMPPO (Finland), the Chairman of the Action
- Dr. Klemens SCHADAUER (Austria), Vice-Chairman

Three Working Groups

- Dr. Claude VIDAL (France), leader, WG1
- Dr. Adrian LANZ (Switzerland), deputy leader, WG1
- Prof. Göran Ståhl (Sweden), leader, WG2
- Dr. Emil CIENCIALA (Czech Republic), deputy leader, WG2
- Prof. Gherardo CHIRICI (Italy), leader, WG3
- Dr. Susanne WINTER (Germany), deputy leader, WG3

COST

Cost Action E43 Objectives

- To harmonise the definitions and concepts to produce comparable information
- To support countries, particularly with new inventories
- To promote the use of scientifically sound and validated methods

COST

Cost Action E43

- Building up European forest information supply on the national inventories
 - maximised benefits from inventories
 - maximised advantage of local knowledge and requirements together with international requirements

COST

E43, Three WGs:

- Harmonised definitions and measuring practices
- Harmonised estimation procedures for carbon pools and carbon pool changes
- Harmonised indicators for assessing components of biodiversity with NFI data

COST

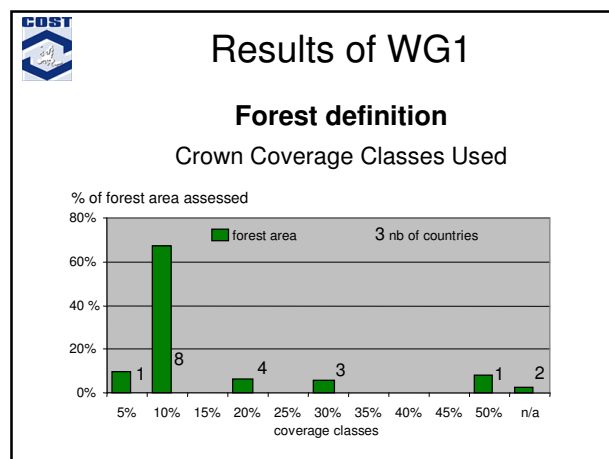
Work Plans for E43

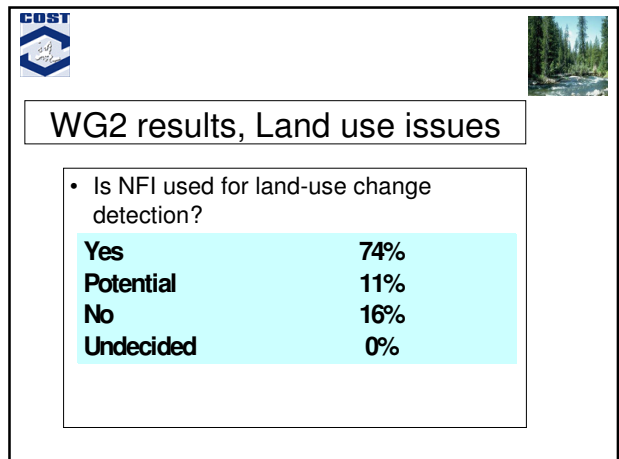
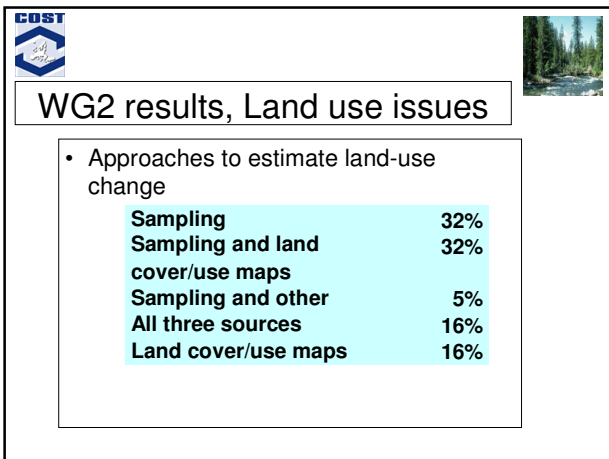
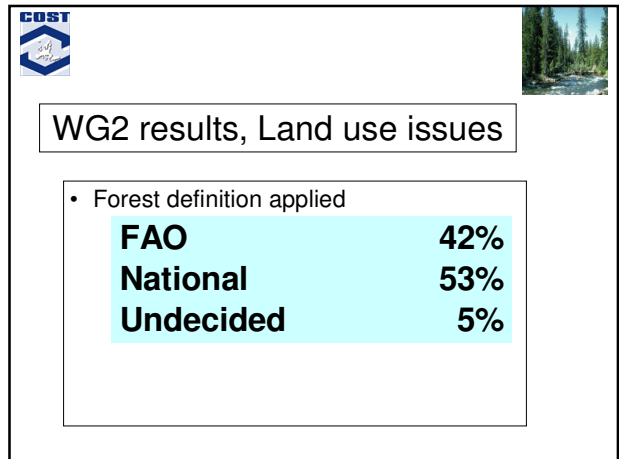
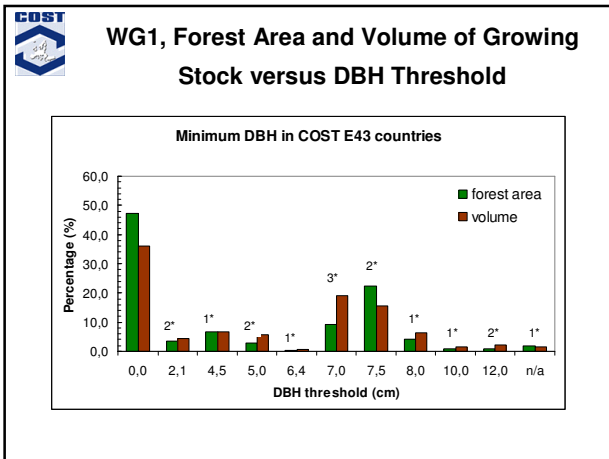
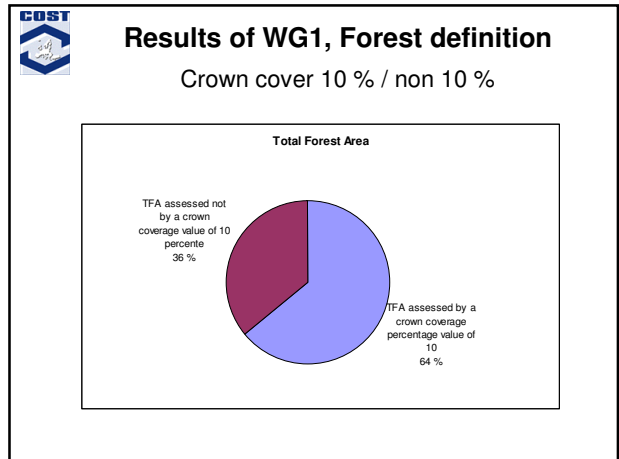
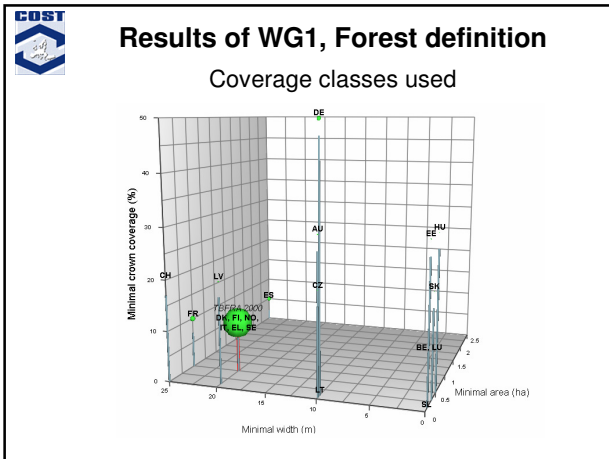
- Standardised result tables (core tables) for FRA, Carbon pools, Biodiversity, MCPFE
- Identify the key variables and parameters for which we define 'references' (e.g. forest, volume etc)
- Analyses how far / near from the references countries are
- Build "bridges" for achieving standardised results

COST

E43, State-of-the-art

- So far
 - 6 Management committee meetings
 - 6 Steering committee meetings
 - 6 Joint working group meetings
 - 2nd Questionnaires, all WGs
 - Short term scientific missions for analysing the questionnaires and defining references





WG2 results, NFI data on 5 carbon pools (%)

	Yes	Yes, potentially	No	Undecided
Above-ground biomass	84	11	5	-
Below-ground biomass	47	11	26	16
Deadwood	58	32	11	-
Litter	42	32	21	5
Soil	37	26	21	16

WG2 results, KP - definitions

- Adopted forest definition

Same as for UNFCCC reporting	74%
Undefined	21%
Not answered	5%

WG2 results, KP - baseline

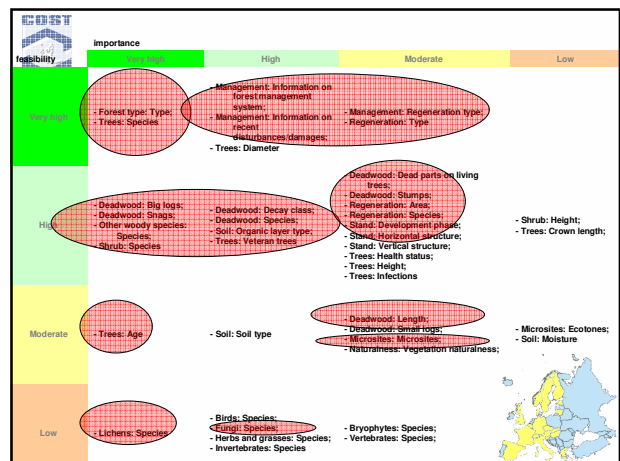
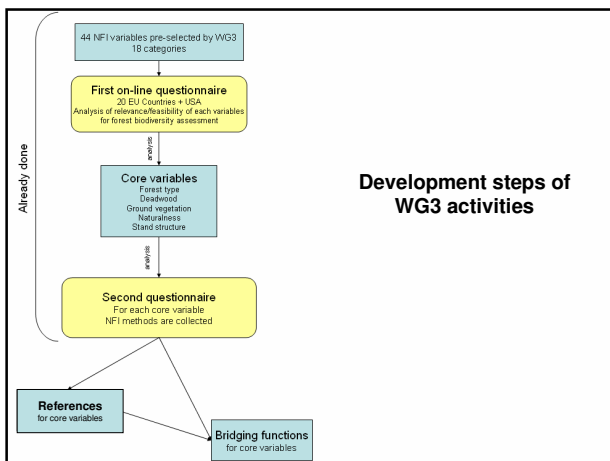
- Data for the baseline year (mostly 1990)

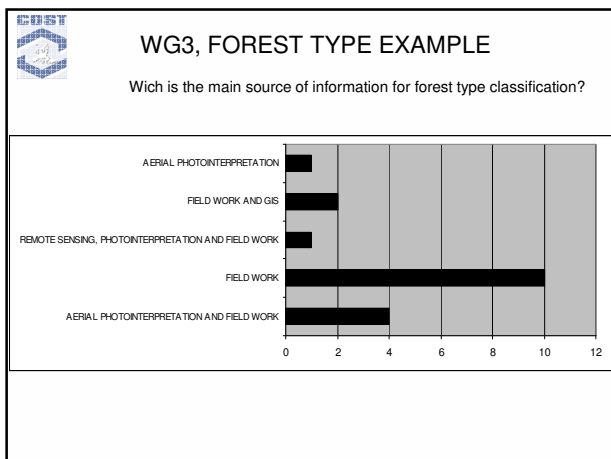
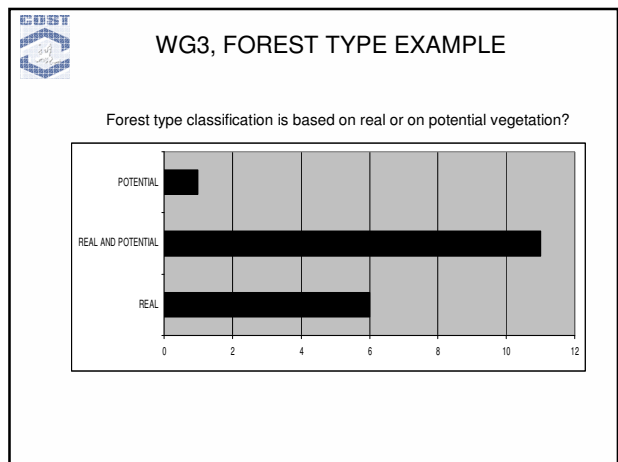
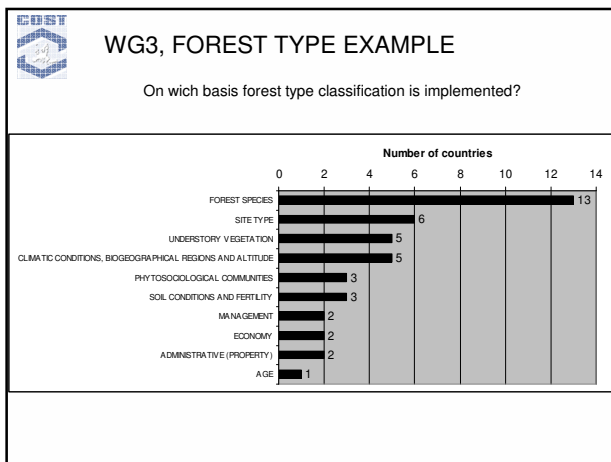
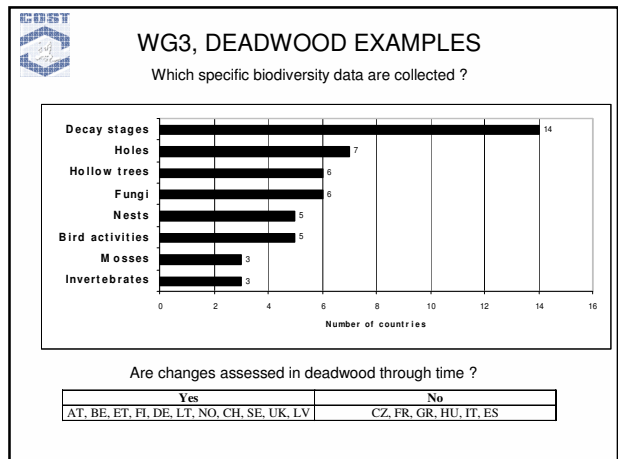
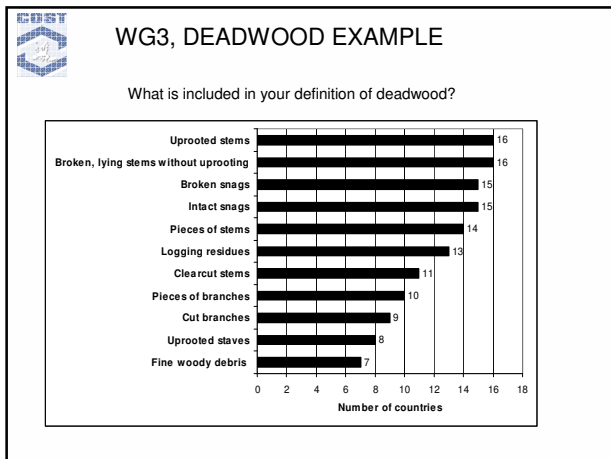
From NFI measurements	53%
From NFI measurement and other sources	16%
From other sources	32%

WG2 results, KP – ARD activities

- The basis for ARD estimation

Land cover/use maps	16%
Sampling	37%
Land cover/use and sampling	21%
Land cover/use maps and other methods	11%
Sampling and other methods	5%
Other	11%





- The expected outputs of E43**
- Inventory teams involved, high commitment of all, particularly core people and groups
 - First results available
 - Analysis of the current status of NFIs in participating countries
 - Reference definitions
 - Glossary as a bi-product



The expected outputs of E43

- Tools to build bridges
- Examples of harmonised estimates
- 2 years to go, until the end of June, 2008
- More information: www.metla.fi/eu/cost/e43



The benefits for international processes

- Involvement in FAO, UNECE/FAO: FRA, MCPFE UNFCCC work
- Link with European Union institutions and data collection systems:
Forest Focus, Lucas, EEA, ESA, IUC
- A European technical answer to policy needs



Thank you !

