

PROCEEDINGS OF THE FRA 2010
REGIONAL WORKSHOPS FOR NATIONAL
CORRESPONDENTS AND FOCAL POINTS FOR THE PACIFIC
REGION

HANOI, VIET NAM, 18-20 APRIL 2008
NADI, FIJI, 19-21 NOVEMBER 2008





The Global Forest Resources Assessment Programme

Sustainably managed forests have multiple environmental and socio-economic functions which are important at the global, national and local scales, and they play a vital part in sustainable development. Reliable and up-to-date information on the state of forest resources - not only on area and area change, but also on such variables as growing stock, wood and non-wood products, carbon, protected areas, use of forests for recreation and other services, biological diversity and forests' contribution to national economies - is crucial to support decision-making for policies and programmes in forestry and sustainable development at all levels.

FAO, at the request of its member countries, regularly monitors the world's forests and their management and uses through the Global Forest Resources Assessment Programme. The Global Forest Resources Assessment 2010 (FRA 2010) has been requested by the FAO Committee on Forestry in 2007 and will be based on a comprehensive country reporting process, complemented by a global remote sensing survey. The assessment will cover all seven thematic elements of sustainable forest management, including variables related to the policy, legal and institutional framework. FRA 2010 is also aimed at providing information to facilitate the assessment of progress towards the Global Objectives on Forests of the United Nations Forum on Forests and the 2010 Biodiversity Target of the Convention on Biological Diversity. Results are expected to be published in 2010.

The Global Forest Resources Assessment programme is coordinated by the Forestry Department at FAO headquarters in Rome. The contact person is:

Mette Løyche Wilkie
Senior Forestry Officer
FAO Forestry Department
Viale delle Terme di Caracalla
Rome 00153, Italy

E-mail: Mette.LoycheWilkie@fao.org

Readers can also use the following e-mail address: fra@fao.org

More information on the Global Forest Resources Assessment programme can be found at:
www.fao.org/forestry/fra

DISCLAIMER

The Forest Resources Assessment (FRA) Working Paper Series is designed to reflect the activities and progress of the FRA Programme of FAO. Working Papers are not authoritative information sources – they do not reflect the official position of FAO and should not be used for official purposes. Please refer to the FAO forestry website (www.fao.org/forestry) for access to official information.

The FRA Working Paper Series provides an important forum for the rapid release of information related to the FRA programme. Should users find any errors in the documents or would like to provide comments for improving their quality they should contact fra@fao.org.

Forestry Department
Food and Agriculture Organization of the United Nations

Forest Resources Assessment Working Paper

PROCEEDINGS OF THE
REGIONAL WORKSHOPS FOR NATIONAL
CORRESPONDENTS AND FOCAL POINTS FOR THE
PACIFIC REGION

HANOI, VIET NAM, 18-20 APRIL 2008
NADI, FIJI, 19-21 NOVEMBER 2008

December, 2008

Contents

1	PREAMBLE	5
2	WORKSHOP OBJECTIVES	6
3	CONTENT	6
4	RESULTS	7
4.1	GENERAL COMMENTS AND QUESTIONS ON SCOPE, COVERAGE AND METHODOLOGY OF FRA 2010.....	7
4.2	SUMMARY OF SPECIFIC COMMENTS / ISSUES ON THE NATIONAL REPORTING TABLES (HANOI AND FIJI WORKSHOPS).....	8
4.3	SPECIAL STUDY ON SMALL ISLAND DEVELOPING STATES (FIJI WORKSHOP).....	15
5	WORKSHOP EVALUATION (HANOI WORKSHOP)	18
5.1	GENERAL OBJECTIVES.....	18
5.2	STRENGTHS AND WEAKNESSES	18
5.2.1	<i>Strengths</i>	18
5.2.2	<i>Weaknesses</i>	19
5.3	ORGANIZATION AND PROGRAMME.....	19
5.4	ADDITIONAL COMMENTS:	20
5.5	SUGGESTIONS:	20
6	ANNEXES	21
6.1	ANNEX 1 – LIST OF PARTICIPANTS (HANOI WORKSHOP).....	21
6.2	ANNEX 2 – LIST OF PARTICIPANTS (FIJI WORKSHOP).....	23
6.3	ANNEX 3 – AGENDA FOR THE WORKSHOP (HANOI WORKSHOP)	28
6.4	ANNEX 4 – AGENDA (FIJI WORKSHOP).....	30
6.5	ANNEX 5 – PRESENTATIONS.....	32

FRA 2010 Pacific workshops

Hanoi, Viet Nam, 18-20 April, 2008



Nadi, Fiji, 19-21 November, 2008



1 Preamble

FAO is conducting a series of sub-regional and regional workshops as part of the preparatory work for the country reporting to the Global Forest Resources Assessment 2010 (FRA 2010). The workshops respond to requests made by many National Correspondents (NCs) to increase FAOs support and capacity building at sub-regional and regional levels.

The first regional workshop for the Pacific region was held (at the National Convention Centre) in Hanoi, Viet Nam as a pre-event to the Asia Pacific Forestry Commission (21-26 April, 2008). Having it as a pre-event to the Asia-Pacific Forestry Commission Meeting was advantageous in that participants had the opportunity to listen to and share experiences with Asian counterparts and other experts present at the APFC meeting.

The second workshop was held (at the Nomads Skylodge Hotel) in Nadi, Fiji from 19 to 21 November 2008 and was partly funded by New Zealand. In order to take advantage of the presence of National Correspondents for FRA 2010, a separate workshop on forest monitoring and assessment (MAR) was organized back to back with the FRA 2010 workshop (November 17 and 18). The main objective of the two day MAR workshop was to discuss the findings of the study on a Pacific MAR network and to endorse future actions to move the initiative forward, see <http://www.fao.org/forestry/mar> for details.

Both workshops were jointly organized by the FRA Secretariat of the FAO Forestry Department in Rome, and the Secretariat for the Pacific Community (SPC) Suva, Fiji.

Invitations to the workshops were extended to the officially nominated FRA 2010 National Correspondents (NCs) and focal points in the Pacific region. In total, 18 participants from 11 countries attended the first workshop (see List of participants in Annex 1). Seventeen participants from 11 countries attended the second workshop (see list of participants in Annex 2).

The workshops mainly focused on the contents of the 17 National Reporting Tables and, in parallel, discussed common data and information collection issues which were common to all the countries in the region. National Correspondents who were not able to attend the global meeting held in Rome, from March 3-7, 2008 were brought up to date on the FRA 2010 reporting process and the global remote sensing survey.

2 Workshop objectives

The main objectives of the workshops were to provide technical assistance and guidance in order to ensure high-quality reporting which meets the specifications established for FRA 2010, through:

- Detailed discussion on the seventeen national reporting tables, including the process of identification, selection and documentation of national data and data sources;
- ensuring the correct application of processes of data transformation, estimation and forecasting to generate information for FRA categories and reference years;
- ensuring consistency among different national reporting tables;
- identifying problems and data gaps, if any and for each of the 17 national reporting tables in each participating country and suggesting ways to address these.

In addition to above, the second workshop held in Fiji included a group work session on a possible special study on Small Island Developing States.

3 Content

The first day sessions (Hanoi and Fiji workshop) were dedicated to introductory presentations on the workshop including organization of the workshop, self introduction by participants, presentation of the FRA 2010 reporting process and reporting methodology in order to give the participants a clear understanding of the workshop objectives and content, and to ensure their full participation. Following the introductory presentation the participants were briefed on the FRA 2010 remote sensing survey (workshop in Hanoi). The participants were invited to present the current status of their country report and identify problems or data gaps they were faced with.

The following technical sessions of the workshops were dedicated to clarification and discussion on the 17 national reporting tables and to addressing identified technical issues. In the workshop held in Hanoi each table was discussed in plenary, where the participating countries presented the main problems and issues related to the reporting tables (see workshop agenda in Annex 3). In the Fiji workshop alternate group work and plenary sessions were organized for detailed discussions on the FRA 2010 reporting tables. An additional group work and plenary discussion was organized seeking input to possible content of a special study on Small Island Developing States (see workshop agenda in Annex 4).

Most of the issues related to the reporting tables were clarified during the workshop, and the remaining issues were forwarded to the FRA secretariat to be clarified and included in the Frequently Asked Questions on the FRA website. The background documents Guidelines for Country Reporting to FRA 2010 and Specifications of National Reporting Tables were presented in detail.

To strengthen on-going work and create networks that can sustain and increase capacities, the FRA Secretariat actively engaged partners like SPC, US Forest Service and the Pacific's two major neighbours and donor partners, Australia and New Zealand. Moreover, creating links with other projects such as the regional MAR-SFM project was also positive in that it provided opportunities for wider stakeholder participation in the FRA work and shared knowledge and skills.

The workshops were concluded by a general plenary discussion on the FRA 2010 reporting and the outcomes of the workshop.

4 Results

The participants recognized that capacity building efforts in the Pacific countries is very important. A strong recommendation from the first workshop held in Hanoi was the need to organize a second regional workshop in the Pacific region to review draft reports and clarify any issues related to the reporting tables. The Fiji workshop was organised in response to that recommendation.

The next sections (4.1 - 4.2) present the main issues that were discussed during the two workshops. These are organized according the FRA 2010 reporting tables, preceded by a section on general comments and questions on the scope, coverage and methodology of FRA 2010. The issues will be discussed by the FRA secretariat and the key issues of general interest will be posted on the FRA 2010 website under the Frequently Asked Questions (FAQs). The findings from the group work on the possible special study for small island developing states are presented in section 4.3.

The organisation of the workshops was timely and contributed well to enhancing the understanding and knowledge of the participants on the FRA 2010 process. Indications suggested that the workshop achieved its objective with most, if not all, countries feeling quite confident that they would be able to complete their reports before the due dates.

4.1 General comments and questions on scope, coverage and methodology of FRA 2010

Q: What to do if data in the FRA 2010 country report for the years 1990, 2000 and 2005 are different from what was reported in FRA 2005?

A: If new data have become available since FRA 2005, countries may also need to change historical figures as the new data most likely will affect the trend estimates. Likewise, if it is noticed that an error was made in the estimations for FRA 2005, these should be corrected accordingly. When ever, previously reported figures are changed, a justification should be clearly documented in appropriate comment field to the table.

4.2 Summary of specific comments / issues on the National Reporting Tables (Hanoi and Fiji workshops)

Reporting table	Comments/ Issues/ Answers
T1	<p>Q: Should coconut plantations be included in the area of forest? A: No, coconut plantations are generally classified as “Other land with tree cover”, as almost all palms when planted are used for agricultural products. Moreover, in the particular case when managed primarily for wood production and/or protection of soil and water they should be classified as “forest”. Suggested to add a comment to the other land with tree cover documenting the area of coconut plantations.</p> <p>Q: Should natural stands of coconut be included in the forest area? A: Only, if the predominant land use is forestry and both the crown cover and height criteria are met.</p> <p>Q: If other wooded land was not reported on in FRA 2005, can it be reported on now? A: Yes, if new information is available to report on other wooded land it should be reported on. Further, the reported time series have to be corrected accordingly. It is important to include a comment explaining the difference in reported figures in FRA 2005 and FRA 2010.</p> <p>Q: Can abandoned “shifting cultivation” lands be reported as forest? A: It depends on the intended (future) land use. Abandoned shifting cultivation areas without any indication that the area forms part of a rotating agricultural system, could be considered as “forest” if the tree cover reaches the minimum thresholds or is expected to do so within a few years. On the other hand, short fallows that form part of a rotating agricultural system that after a certain period of recovery will again be subject to “slash and burn” agriculture should be classified as “other land” and, when relevant, as “other land with tree cover” since the main land use should be considered as agriculture.</p> <p>Q: How to report when the National Forest Inventory has a different area threshold than FRA? A: The FRA definitions of “forest” and “other wooded land” is “land spanning more than 0.5 hectares...” and this should be the base for country reporting whenever it is possible. However, sometimes the national data do not allow obtaining estimates with exactly this size limit. In such cases the countries should report to the relevant size limit that is available and clearly document the size limit used in appropriate “comment field”. The same threshold must be used consistently throughout the time series.</p> <p>Q: How should “other forests” between coconut plantations be classified? A: If they fit the definition of forest they should be reported as forest.</p> <p>Q: Can senile coconut plantations be counted as forest? A: Generally these should be classified as “other land with tree cover”.</p>
T2	

	<p>Q: How to handle concession rights? A: Concessions are almost always public ownership, where the State (or sub-national administrative unit) leases certain rights; the general rule is that it is public ownership. In case when a private owner gives concessions, it should still be reported on under public ownership but with a note to the table.</p> <p>Q: How to treat concessions on only commercial species? A: An explanatory note should be added to the table.</p> <p>Q: How to report when the ownership status is ambiguous (e.g. unallocated forests retained by the government, indigenous communities holding land ownership, while companies may utilize the forest or parts of it)? A: Report as “Other ownership”, special cases should be documented in detail in appropriate comment field to the table.</p> <p>Q: In my country, public and private lands are mapped but not for forests. Current estimates indicate that the forest cover is 75%. Can this information be used for best estimates of our forests? A: Yes, and remember that any assumptions made should be clearly documented in the country report.</p> <p>Q: In my country, minor areas of public lands are managed as concessions. But no information on breakdown of management rights of public forests. Because our information is patchy would it be alright to report as such with footnotes? A: Yes.</p> <p>Q: Should the total in table 2a correspond to forest area in T1? A: Yes.</p> <p>Q: Does public lands include leased lands? A: It depends on the length of the lease.</p>
T3	<p>Q: Should protected areas under IUCN category V and VI be included under “area of forest in protected areas”? A: No, these categories are excluded.</p> <p>Q: How to handle illegal logging/activities in protected areas? A: Countries should report on actual area of forest that is legally protected, not whether the protection is enforced or not.</p> <p>Q: Are all protected areas considered as “conservation of biodiversity”? A: No, only when conservation of biodiversity is the main reason for protecting the area. Other protected areas may have been established to protect “soil and water” or “social services”.</p> <p>Q: Does the term “designated” imply that the function has to be legally registered? A: Not always. The definition of Primary designated function states. “The primary function or management objective assigned to a management unit either by legal prescription, documented decision of the land owner/manager, <u>or evidence provided by documented studies of forest management practices and customary use.</u>”</p>

	<p>Q: In my country we know that there exists areas designated for particular purposes but we have no national statistics on these, how to report? A: If quantitative information is not available it is a challenge to report. Expert estimates can sometimes be used, but this should be clearly documented in the country report. If you do not want or are unable to make an expert estimate it is important to add a note to the table explaining that there exists areas designated for particular purposes e.g protection of soil and water but no quantitative figures are available. The note should also indicate in which reported category the unknown area of designated function may be included.</p> <p>Q: Should the total in table 3a correspond to forest area in T1? A: Yes.</p>
T4	<p>Q: How to report on areas with bamboo mixed in tree stands? A: The general rule in these cases is to look at whether the tree stand is predominantly dominated by bamboo, if yes it should be reported on as bamboo forest.</p> <p>Q: How report on newly established/planted mangroves? A: If the land area is larger than 0.5 hectares with trees higher than 5 meters and a canopy cover of more than 10 percent, or trees able to reach these thresholds in situ they should be reported as “forest”. It does not include land that is predominantly under agricultural or urban land use (as per the definition of “forest”).</p> <p>Q: How should mangrove areas found below the tidal level and are not part of the total land area, be accounted for? A: Most mangroves are located in the inter-tidal zone i.e. above the daily low tide, but below the high water mark. The land area according to country definitions may or may not include the inter-tidal zone. For FRA 2010, all mangroves which meet the criteria of “forest” or “other wooded land” should be included in the respective category in Table 1 and T4b, even when they are found in areas not classified by the country as land area. When necessary, the area of “other land” should be adjusted in order to ensure that the total land area matches the official figures as maintained by FAO and the UN Statistics Division and a comment about this adjustment included in the comment field to the table.</p> <p>Q: It is sometimes difficult to distinguish native/indigenous species from introduced/exotic species. A: Even if an introduced/exotic species is considered “naturalized” and is regenerating naturally it should be reported as “other naturally regenerated forest” and also under the subcategory “...of which of introduced species”.</p> <p>Q: Should the total in table 4a correspond to forest area in T1? A: Yes.</p> <p>Suggestion: It was suggested to add a special category of coconut plantations in the next FRA (2015?).</p>
T5	<p>Q: How to report on natural expansion of forest (how to handle the gradual transition</p>

	<p>of forest)?</p> <p>A: It is true that the natural expansion of forest can be quite gradual in some cases. The general rule is that the previous land use should be abandoned for a period of time and be expected to revert to forest (the period of time may vary and should be documented in a note to the table). Further the land should have a regeneration of trees that are expected to comply with the definition of “forest”.</p> <p>Q: Where does ecological restoration fall?</p> <p>A: If it is not a question of reforestation it is not included in this table.</p> <p>Q: What is the difference between afforestation and reforestation?</p> <p>A: Afforestation is the planting/seeding of trees on areas that previously were either other wooded land or other land. Reforestation on the other hand takes place in areas that already are classified as forest and does not imply any change of land use from a non-forest use to forest.</p>
<p>T6</p>	<p>Q: In Table 6b Growing stock of the 10 most common species, should the ranking and list of species be based on inventory data or log exports?</p> <p>A: Forest inventory data should be used.</p> <p>Q: What threshold values should be used to report on growing stock?</p> <p>A: The national values should be used and documented in table T6c.</p> <p>Q: How to report relatively small volumes when the unit is Million m³?</p> <p>A: As a rule of thumb, small values should be reported with decimals so the value has at least three (3) significant digits (e g 1.23).</p> <p>Q: Should the total growing stock reported in 6a equal total in 6b?</p> <p>A: Yes.</p> <p>Q: What are the diameter thresholds for commercial growing stock?</p> <p>A: Growing stock of commercial species should be the total irrespective of dbh and where these are located (e g protected areas).</p> <p>Q: Use of a volume factor of 0.7 for tropical natural forests? This factor was derived from work done in a number of Pacific countries.</p> <p>A: Any conversion factor used should be documented in the country report.</p> <p>Q: In table 6c if threshold values are unavailable can table be left blank?</p> <p>A: Yes.</p> <p>Suggestions:</p> <p>a) Use of a common inventory processing package that will facilitate ease of calculations was suggested (Special study?).</p> <p>b) It was further suggested (for next FRA) that table 6c should include information on volume factor used (if used).</p> <p>Comment:</p> <p>An inconsistency was noted in the background documents. The document Specification of National Reporting Tables for FRA 2010 specifies in footnote 2 (page</p>

	<p>26) “Year 2000 is the reference year for defining the species list and the order of the species” whereas the document Guidelines for country reporting specifies the year 2005. <u>Note that the year 2000 should be the reference year for defining the species list and the order of the species.</u></p>
T7	<p>Q: Does “above ground biomass” include forest litter? A: No above ground biomass only includes living biomass.</p> <p>Q: What is included in the “above ground biomass”? A: All living biomass above the soil including stem, stump, branches, bark, seeds and foliage.</p> <p>Q: How to calculate above ground biomass and below ground biomass. A: See example in Guidelines for country reporting to FRA 2010 (pp 30-31).</p> <p>Q: How to report on dead wood dry matter? A: If no national data on dead wood biomass are available countries should report “n.a.” not available.</p>
T8	<p>No questions related to reporting on carbon.</p> <p>Comment: Concern was expressed regarding 1990 cut-off point for plantations established for CDM projects under Kyoto.</p>
T9	<p>Q: How should illegal “slash and burn” fires be classified as “planned fires” or “wild fires”? A: All “slash and burn” fires should be considered as planned fires, as long as they burn according to management objectives. However, “slash and burn” fires may go out of control, either by spreading to other areas, by exceeding the intended intensity or both and should in such cases be classified as “wildfire” and a note should be added to the table</p> <p>Q: How to report if an area is burned more than once in one year? A: It should be counted as only one in terms of area but number of fires should be recorded in appropriate column.</p>
T10	<p>Q: How to report if an area is affected by more than one disturbance? A: The categories in this table are not exclusive. Hence, a forest area that has been affected by different disturbances simultaneously, each of which significantly affects the health and vitality of the forest should be counted once for each relevant disturbance category. Note that the total area affected by disturbances is not necessarily the sum of the individual disturbance categories as these may be overlapping.</p> <p>Comments: a) It was suggested that links to Websites containing information on pests and diseases</p>

	<p>should be added to the on-line FAQ document. Information can be found at the PIER website.</p> <p>b) The disturbance caused by non-woody invasive species in the region is important. FRA 2015 should include also non-woody invasive species.</p>
T11	<p>Q: Can removal of coconut wood be included in the assessment? A: Yes, in the FRA category “total volume”. Note that the sub-category “...of which from forest” only should include removals from land classified as “forest” in T1.</p> <p>Q: It is difficult to assess illegal removals –how should this be reported on? A: A note can be added to the table explaining that the reported figure is probably underestimated <u>or</u> if possible the figures can be corrected using an expert estimate (accompanied by a note explaining the assumptions made to come up with the estimate).</p> <p>Comment: It was felt that the term “industrial round wood” is a bit misleading as it includes all round wood removed for other purposes than energy production.</p>
T12	<p>Comment: Most countries agreed that it will be difficult to report quantity and value of the products. However most countries thought that they could report species/product and also list nwfp categories.</p>
T13	<p>Q: What does the unit FTE stand for? A: Full Time Equivalent and it corresponds to one person working full time for one year or two persons working half time for one year.</p> <p>Q: Can persons employed in harvesting of coconut logs for wood production be included? A: Only if the harvested coconut logs comes from areas which are defined as forest (according to Table 1).</p> <p>Q: What about people employed in eco-tourism e g tour guides etc.? A: Should be excluded as they do not directly contribute to the management of the forests.</p>
T14	<p>Q: How to report when forest policy has been updated (perhaps several times)? A: Provide the latest version of the forest policy.</p> <p>Q: What is the objective of asking this information? A: Forest policy as well as the institutional and legal framework are key elements for sustainable forest management.</p> <p>Q: Does nfps have to be endorsed? A: No.</p>

	<p>Q: Frequent amendments to the law is that an indication of poor policy? A: It can be so. The law is seen as an instrument to implement a policy. When the formulation of the policy is not adequate – for example because the stakeholders have not been enough involved in defining the policy objectives – the instruments to implement the policy such as the regulations are often not adapted to or accepted by the stakeholders.</p> <p>Q: There might be one policy but laws may be regulated in other legislation (how to report?) A: “Tick” the adequate box and provide explanation.</p>
T15	<p>Q: Is sub-national level included in total figure? A: Yes, the sub-national level should be included in the total figure.</p> <p>Q: It should be clarified what is included in total staff.... A: All staff working regularly within public forest institutions should be counted except people employed in state-owned enterprises, education and research, as well as temporary/seasonal workers.</p> <p>Q: Can a project be a state owned enterprise? A: No. A project is – in principle – not meant to generate profit.</p>
T16	<p>Q: Should forestry students abroad be included? A: The reporting table should reflect the in-country capacity to educate students in forest-related sciences. Therefore, students graduated abroad should be excluded while foreign students graduated in the country should be included.</p> <p>Q: What is the definition of forest technician? A: Qualification issued from a technical education institution consisting of 1 to 3 years post secondary education.</p>
T17	<p>Q: Should concession fees, taxes etc be included? A: Only public (government) revenue is calculated, state enterprises are not included.</p> <p>Q: What should be included in “transfer payments”? A: All direct payments, such as subsidies, cash grants etc., paid by the government to non-government and private sector institutions, enterprises, communities or individuals for implementing forest-related activities.</p>

4.3 Special study on Small Island Developing States (Fiji workshop)

The group's preference was to have a stand alone Pacific Island report. If this is not possible then there should at least be a section dedicated to the Pacific Islands. The group further agreed that the SID groupings in the 2002 report (Forests and Forestry in Small Island Developing states, FAO Working paper 22) are reasonable.

It was suggested that the Pacific Islands should also be considered based on the size of the countries. It was thought that this approach might also be applicable to other regions. The suggested breakdown for the Pacific is: common issues in region and further sub-divided in to specific groups (large, medium small countries).

- Large countries (Fiji, Papua New Guinea, Solomon Islands, Vanuatu)
- Medium countries (Samoa, Tonga, Cook Islands, Niue, FSM, Palau, Nauru)
- Small atolls (Tuvalu, Tokelau, Kiribati)

While there are common issues for all Pacific countries there are also differences between countries related to the size of the country. This is to do with population size and density, remoteness, distance to markets, access to resources etc.

It was suggested that the proposal for the special study could be more effective if it could be aligned more with the Multi Year Programme of Work (MYPW) of the UNFF. Re-affirm some of the recommendations from APFC Sessions and again re-affirm the recommendations from the recent HOF the Heads of Forestry meeting in Apia in September 2008.

Climate change, capacity building and good governance are potential cross cutting areas from UNFF to APFC and to the Forestry Heads recommendations.

Critical issues:

- Food and income
Pressure for land for food security and agricultural developments. Increasing international food prices is leading to new focus on enhancing/improving food security and more domestic food production. This may lead to more land use change.
- Economic development
Looking at forests from the perspective of people. The term under the UNFF MYPW for 2010-2011 is Forests for People, Livelihoods and Poverty Eradication/Alleviation.
- Insufficient resources and lack of political commitment to better protect the environment and forests.

Even countries that have banned logging (mostly outside of the Pacific) have not always met their objectives i.e. deforestation has continued.

Growing populations are putting more pressure on the environment resulting in more land development, pollution of water and marine environments and other natural resources. Global demand for resources and consumer goods (including tourism) is also putting increasing pressure on natural resources in developing countries.

The group recognized that the environment tends to be more highly valued once incomes have risen and people have the necessities of life. Rather than looking from the perspective of forests do we need to look from the point of view of people? It was also noted that corruption is still a problem in the forest industry in the region and insufficient resources and a lack of political commitment to better protect the environment and forests is an other issue.

Monitoring and evaluation - thin capability to monitor forests, more support and training required.

Drivers

- Economic development, reducing poverty
- Food security
- Growing populations
- Energy – costs, bioenergy, less dependence on fossil fuel
- Climate change
- Pressure for improved environmental management
- International processes and agreements (Standards, certification, UNFCCC, CBD, UNCCD, UNFF) put pressure on Governments and companies and provide opportunities to improve forest management.

Participating in emerging markets e.g. carbon trading may be limited for Pacific countries because small countries have limited resources and ability to benefit. More collaboration needed between experts is needed e.g. between climate change specialists and forestry specialists. Larger countries e.g. PNG may be able to but not smaller states. Can smaller states work together for mutual benefit?

Markets to protect biodiversity bring both new sources of income and have potential advantages for tourism.

Suggested report format

-Introduction

-Description of forest resources

-Aspirational goals (what do SID people want, economic development, and how to improve forestry and environmental management)

-Role of forests and trees in small islands and developing states

-Social and economic development and its relationship with forests

-Forestry institutions, human resource capacity, networks and how to access expertise

-Constraints and opportunities for SFM in SIDS

What are the opportunities?

- Valuing ecosystem services from forests
- Capturing the environmental services that forests provide (carbon, REDD, biodiversity protection, soil and water, tourism)
- Improved water quality and reduced damage to marine environments
- Mitigating soil erosion and loss of soil
- Partnerships/alliances – with other countries, businesses?
- There is potential for rapidly adopting SFM in small island countries for small investment

Report should describe what the international opportunities are and how to access them and get advice and guidance.

There was a feeling of a lack of progress. The issues are well known and have been for 30 years but forest cover is still being reduced. How can this be changed!?

5 Workshop evaluation (Hanoi workshop)

The participants were asked to complete a questionnaire/evaluation form of the workshop. The questionnaire covered 4 main topics (General objectives, Strength and weaknesses, Organization and programme, Logistics); there was also room for additional comments and suggestions.

5.1 General objectives

The participants were asked to rate the meeting and whether the meeting objectives were achieved.

General objectives of the meeting	Very good	Good	Fair	Poor
In general, how would you rate the meeting?	5	6	0	0

General objectives of the meeting	Yes	Partially	No
On balance, would you say that the meeting objectives were achieved?	10	1	0

5.2 Strengths and weaknesses

The participants were asked to list what they considered to be three strengths and weaknesses of the meeting.

5.2.1 Strengths

1. Open discussion which provided NCs with clear understanding of the reporting requirements.
2. Time was allocated to let the participants present the status and progress for the elaboration of the FRA 2010 country reports.
3. A useful picture of forestry from a global perspective was given.
4. FRA allows countries to see current status of their forest resources and see direction they are moving towards.
5. FRA 2010 will help straighten visions of nations through policy makers on how best the forestry should be treated. Forestry Outlook 2010-2020 will greatly benefit from FRA 2010.
6. The resource person's presentations were well presented and very clear and informative.
7. The reporting tables were well explained and presented.
8. Interesting to hear questions and answers from fellow NCs.
9. Sharing of ideas and clarifications of reporting tables.
10. Organizers taking turn to share their experiences and possible solutions to different issues raised.
11. The workshop was well organized.
12. Good and informative presentations.
13. Tables and definitions much clearer to NCs.
14. Constructive comments and explanations from fellow NCs
15. Pacific NCs knowledge & skills upgraded in completing the FRA 2010 tables
16. Detailed explanations to each of the tables and clarifications provided to grey areas.
17. The support provided by FAO and the timing of the workshop gives participants time to fill the tables.
18. Valuable to have a separate workshop for the countries in the Pacific region (issues are to some extent similar).
19. Good team of resource persons.
20. Number of participants small enough for good interaction.
21. Good opportunity for Pacific countries to meet and share ideas.

22. FAO clarified much of the reporting process.
23. Good exchange between countries and FAO on process issues.
24. Technically very good.
25. Common understanding established among participants.
26. Good interaction between the facilitators and the participants.
27. Clarified expectations of the reporting tables.
28. Openness and frankness of discussions (Q&A) and deliberation of issues raised.

5.2.2 Weaknesses

1. Compromise on different data situation in various countries.
2. Some confusion caused at times when experts views seemed to vary at opposing ends.
3. Scope of FRA is so big that small island nations feel that they are left out from global picture in terms of forestry.
4. Most tables and discussions as well as coverage will not make atoll countries to participate fully or to attend to all tables.
5. Transport to and from workshops (should have been arranged and paid by FAO).
6. Language barrier by hosting country.
7. Long travel to get to the meeting (meeting in Pacific region would be better).
8. Having to pay too much with the DSA (Hotel, taxi, etc).
9. Long lunch breaks due to unorganized Vietnamese hosting organization.
10. Presentations time consuming.
11. Still some grey areas that need to be sorted.
12. Venue a bit too far from the hotel.
13. Insufficient opportunity for practical exercises (calculations, etc).
14. Would have been useful to use more worked examples in groups.
15. Overseas travel arrangements a problem.
16. In-house business –unorganized.
17. Computers should have been set-up to enable participants to begin working on the tables with data that they had brought.

5.3 Organization and programme

The participants were asked to rate:

Organization and programme	Very good	Good	Fair	Poor
Relevance of agenda items to the objectives of the meeting	6	5	0	0
Quality of the technical presentations	9	1	1	0
Organization of the workshop	4	4	1	2
Usefulness of the workshop	9	2	0	0
Time management	6	4	1	0

Logistics	Very good	Good	Fair	Poor
Meeting rooms	8	2	1	0
Breaks	7	3	1	0
Accommodation	7	3	1	0

5.4 Additional comments:

1. A general concern was the lack of properly organized transport to and from the meeting venue. Need for better arrangements for lunch and possibly a welcome dinner though not absolutely necessary.
2. The training is very important and useful if the tables are to be filled early and also correctly.

5.5 Suggestions:

1. It was suggested that in the future Pacific meetings should be organized in the region preferably in Fiji or New Zealand.
2. A number of participants suggested that a second Pacific workshop for “reviewing draft reports” should be organized at the end of the year (2008).
3. It was noted that the validity and credibility of the country reports depends largely on the information collected/collated by the NC. This is usually in collaboration with other national stakeholders. However this sometimes is a barrier as information might not be free or is confidential and needs approval from higher authority or even have to be paid for. This will have to come out of the NC pocket as this FRA 2010 work is not budgeted for.

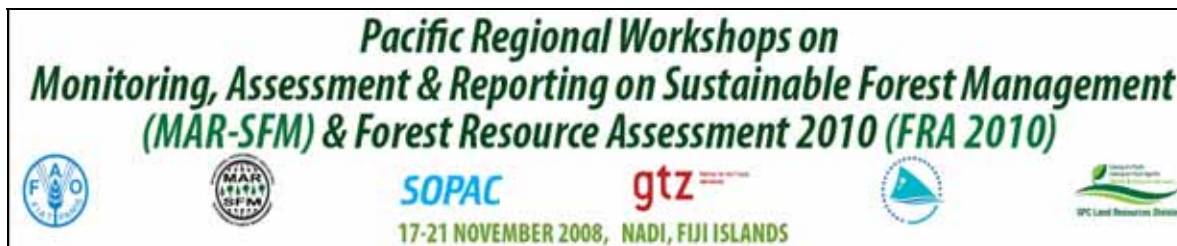
6 Annexes

6.1 Annex 1 – List of Participants (Hanoi workshop)

Participant	Country/ organization	Title	Address	Phone	Fax	E-mail
Mr Nooroa Tokari	Cook Islands	Senior Project Officer	Ministry of Agriculture, P.O. Box 96 Rarotonga, Cook Islands	+682-28711	+682-21881	noot@agriculture.gov.ck
Mr Samuela Lagataki	Fiji	Acting Deputy Conservator of Forests	Forestry Department, Box 2218, Govt. Bldgs, Suva, Fiji	+679-9332707 or +679-3301611		samuela_lagataki@yahoo.com or a.nakove@hotmail.com
Mr Betarim Rimon	Republic of Kiribati	Senior Project Officer	Ministry of Environment, Lands and Agriculture Development	+686-28211	+686-28334	betarimr@melad.gov.ki or betarimr@yahoo.com
Mr Alan Reid	New Zealand	Senior Analyst	MAF, PO Box 2526, Wellington, NZ	+644-8940708	+644-8940742	Alan.Reid@maf.govt.nz
Mr Brandon Tauasi	Niue	Head of Forestry	Department of Agriculture, Porritt Drive, Alofi	+683-4032	+683-4079	flex@niue.nu or flextauasi@yahoo.com
Mr Vitus Ambia	Papua New Guinea		PNG Forest Authority, PO Box 5055, Boroko, PT. Moresby	+675-3277844 or +675-3113312	+675-3277839 or +675-3254433	vambia@pngfa.gov.pg or v_ambia@hotmail.com
Mr Aokuso Levasa instead of (Mr Tony Leutele)	Samoa	Principal Forest Policy and Planning Officer	Mnre, Private Bag, Apia, Samoa	+685-23800 or +685-7795014 (mobile)	+685-23127 or +685-29707	aokuso.leavasa@mnre.gov.ws or aokuso.leavasa@yahoo.com (tony.leutele@mnre.gov.ws) or (tonyleutele@yahoo.co.nz)
Mr Jimmy Irokete Wanefaia	Solomon Islands	Principal Forester Planning	M.O.F. P.O. Box 24, Honiara, Solomon Islands	+677-28802 or 24215	+677-24660	jwirokete@yahoo.com
Mr Tevita Faka'osi	Tonga	Head of Forestry	Forestry, MAFFF, PO Box 4, Nuku'alofa	+676-29500	+676-30040	mafff@tevista.fakaosi
Mr Phyllis Kamastia	Vanuatu	Mapping / GIS Officer	Department of Forests	+678-23171 or +678-57955	+678-23856	pkamasteia2000@yahoo.com or phylliska@gmail.com
Mr Joseph Donnegan	US Forest Service (American Samoa, Guam, Palau, N. Marianas, Micronesia,	Ecologist	620 SW Main St #400, Portland OR, 97205 USA	+1-5038082053	+1-5038082020	jdonnegan@fs.fed.us

	Marshall Islands)					
Mr Sairusi Bulai	Secretariat of the Pacific Community	Forestry Adviser	PMB, Suva, Fiji	+679-330432	+679-3305212	sairusiB@spc.int
Mr Aru Mathias	FAO SAPA	Forestry Officer				Aru.Mathias@fao.org
Mr Adam Gerrand	FAO HQ	Forestry Officer	Viale delle Terme di Caracalla, 00153 Rome, Italy	+39 0657053 063	+39 06570558 25	Adam.Gerrand@fao.org
Mr Orjan Jonsson	FAO HQ	Forestry Officer	Viale delle Terme di Caracalla, 00153 Rome, Italy	+39 0657055 574	+39 06570558 25	Orjan.Jonsson@fao.org
Mr Otsuka Masahiro	FAO/MAR	Forestry Officer				Masahiro.Otsuka@fao.org
Mr Kashio Masakazu	FAO SAP	Forest Resources Officer				Masakazu.Kashio@fao.org
Mr Jean-Louis Blanchez	FAO HQ	Forestry Officer	Viale delle Terme di Caracalla, 00153 Rome, Italy	+39 0657055 712		JeanLouis.Blanchez@fao.org

6.2 Annex 2 – List of participants (Fiji workshop)



17-18 and 19-21 November 2008, Nomads Skylodge Hotel, Nadi, Fiji Islands

FINAL LIST of PARTICIPANTS

COUNTRY REPRESENTATIVES:

COOK ISLANDS

*Mr Nooroa Tokari
Senior Project Officer
Ministry of Agriculture
P O Box 96
Rarotonga
Cook Islands
Tel: (682) 28711
Fax: (682) 21881
E-mail: noot@agriculture.gov.ck*

FEDERATED STATES OF MICRONESIA

*Ms Alissa Takesy
Protected Areas Network Coordinator
Dept of Resources & Development
FSM National Government
PS-12, Palikir, Pohnpei, FM 96941
Federated States of Micronesia
Tel: (691) 320-2620/2646/5133
Fax: (691) 320-5854
E-mail: fsm_pan@mail.fm*

FIJI ISLANDS

*Mr. Samuela Lagataki
Actg Deputy Conservator of Forests
(Services)
Forestry Department
Ministry of Primary Industries
P.O. Box 2218, Government Buildings
Suva, Fiji Islands
Tel: (679) 3301611
Fax: (679) 3318692
E-mail: [samuela_lagataki@yahoo.com](mailto:samuella_lagataki@yahoo.com)*

KIRIBATI

Ms Tearimawa Natake
Senior Agricultural Officer
Department of Agriculture
P O Box 267
Tanaea, Tarawa
Kiribati
Tel: (686) 28108
E-mail: tearimawa21@yahoo.com.au

Mr Betarim Rimon
Senior Project Officer
Ministry of Environment, Lands and
Cultural Development
P O Box 234
Bikenibeu, Tarawa
Kiribati
Tel: (686) 28507
Fax:(686) 28334
E-mail: betarimr@yahoo.com

NEW ZEALAND

Mr Paul Lane
Principal Advisor
Ministry of Agriculture & Forestry
Pastoral House, 25 The Terrace
P O Box 2526, Wellington
New Zealand
Tel: (64) 4-8940625
Fax:(64) 4-8940741
E-mail: paul.lane@maf.govt.nz

NIUE

Mr. Brandon Tauasi
Head of Forestry
Department of Agriculture, Fisheries
and Forestry
Niue Government
Alofi
Niue
Tel: (683) 4032
Fax:(683) 4079
E-mail: flex@niue.nu and
flextauasi@yahoo.com

PALAU

Ms Tarita Holm
Palaris - MRD
P O Box 100
Koror PW 96940
Republic of Palau
Tel: (680) 488-6654
Fax: (680)488-6460
E-mail: tarita_holm@yahoo.com or
tarita@palunet.com or
holmt@palaugis.org

PAPUA NEW GUINEA

Mr Vitus Ambia
Forest Planning Division
P.O. Box 5055, Boroko
Port Moresby
Papua New Guinea
Tel: (675) 3277874
Fax: (675) 3277839/3254433
E-mail: vambia@pngfa.gov.pg or
v_ambiah@hotmail.com

SAMOA

Mr Tony Leutele
A/ Chief Executive Officer- Forestry
Ministry of Natural Resources
Private Bag, Apia, Samoa
Tel: (685) 23800
Fax: (685) 23176
E-mail: tony.leutele@mnre.gov.ws

SOLOMON ISLANDS

Mr Jimmy I Wanefaia
Principal Forester (Planning)
Forestry Department
Ministry of Forestry
P. O. Box G24, Honiara
Solomon Islands
Tel: (677) 24215
Fax: (677) 24660
E-mail: jwirokete@yahoo.com

TONGA

Mr Tevita Fakaosi
Head of Forestry/National Correspondent
Forestry Division
Ministry of Agriculture, Food, Forests
and Fisheries
P. O. Box 892, Nukualofa
Tonga
Tel: (676) 29500/30349
Fax: (676) 30040
E-mail: tevita.fakaosi@maff.gov.to or
fakaosi.tevita@yahoo.com

VANUATU

Ms Phyllis Kamasteia
Mapping Officer
Department of Forests
Government of Vanuatu
PMB 9064, Port Vila
Vanuatu
Tel: (628) 23171
Fax: (628) 23856
E-mail: pkamasteia2000@yahoo.com

RESOURCE

Dr. Michael Mussong
Consultant
Germany
Tel: +49-333465484
Fax: +49-333465428
E-mail: mmussong@fh-eberswalde.de

FAO

Mr Masahiro Otsuka
Forestry Officer
Strengthening Monitoring, Assessment
and Reporting on Sustainable Forest
Management in Asia (GCP/INT/988'JPN)
FAO Regional Office for Asia and the
Pacific (RAP), 39 Phra Atit Road
Bangkok 10200
THAILAND
Tel: +66-2-697-4000 Ext 4130
Fax: +66-2-697-4445
Mobile: +66-81-454-6034
E-mail: Masahiro.Otsuka@fao.org

Mr Orjan Jonsson
Forestry Officer
Forest Assessment and Reporting Service
Forest Products and Industry Division
Room: C-372
Viale delle Terme di Caracalla 00153
ROME
Tel: +39-06-57055574
Fax: +39-06-57055825
E-mail: Orjan.Jonsson@fao.org

**SPC/GTZ Pacific German
Regional Forestry Project**

**Mr Jalesi Mateboto
Community Forestry Specialist
SPC/GTZ Pacific-German Regional Forestry Project,
House 10, Forum Sec Complex
P.O. Box 14041, Suva
Fiji Islands
Phone: 679-3305983/3307543
Fax: 679-3315446
E-mail: jalesim@spc.int**

SPC

**Mr Sairusi Bulai
Adviser
Forest and Trees Programme
Land Resources Division
Secretariat of the Pacific Community
Private Mail Bag, Suva
Fiji Islands
Tel: (679) 3300432
Fax: (679) 3305212
E-mail: sairusib@spc.int**

**Ms Bale Wilikibau
Programme Assistant
Forests and Trees Programme
Land Resources Division
Secretariat of the Pacific Community
Private Mail Bag, Suva
Fiji Islands
Tel: (679) 3300432
Fax: (679)3305212
E-mail: balew@spc.int**

6.3 Annex 3 – Agenda for the workshop (Hanoi workshop)

Agenda, Friday April 18th 2008		
Time	Item	Agenda notes
09:00-09:20	Item 1	Opening session Welcome address (Örjan Jonsson, Sairusi Bulai and Aru Mathias) Round-table presentation of participants
09:20-09:30	Item 2	Organization of workshop Presentation of workshop objectives and expected out puts (Aru Mathias, FAO SAPA) Questions and clarification
09:30-10:00	Item 3	Presentation of FRA 2010 Introduction to the country reporting process (Örjan Jonsson, FAO) Review of methodology for country reporting (Örjan Jonsson, FAO) FRA 2010 Remote Sensing Assessment (Adam Gerrand, FAO)
10:00-10:20	Tea – Coffee break	
10:20-11:20	Item 4	Status of country reports National Correspondents will make brief presentations (5-10 minutes) on the status of their country reports and also highlight any problems or data gaps they are faced with.
11:20-16:30	Item 5	Technical session 1 –Review of reporting tables (Örjan Jonsson, FAO) This session will review the National Reporting Tables 1-5. Time will be dedicated for questions, clarifications and discussions. Information gaps and technical issues should be identified. <u>Presentation of national reporting tables 1-5</u> T1 Extent of Forest and Other wooded land T2 Ownership and management rights T3 Forest designation and management T4 Forest characteristics T5 Forest establishment and reforestation
12:30-13:30	Lunch break	
13:30	Item 5 Cont.	Technical session 1 continued.
15:00-15:15	Tea – Coffee break	
15:15-16:30	Item 5 Cont.	Technical session 1 continued
Agenda, Saturday April 19th 2008		
Time	Item	Agenda notes
09:00-12:30	Item 6	Technical session 2 –Review of reporting tables (Örjan Jonsson, FAO) This session will review the National Reporting Tables 6-8. Time will be dedicated for questions, clarifications and discussions. Information gaps and technical issues should be identified. <u>Presentation of national reporting tables 5-8</u> T6 Growing stock T7 Biomass stock T8 Carbon stock
10:00-10:20	Tea – Coffee break	
10:20-12:30	Item 6 Cont.	Technical session 2 continued.
12:30-13:30	Lunch break	

13:30-17:30	Item 7	<p>Technical session 3 –Review of reporting tables (Örjan Jonsson, FAO) This session will review the National Reporting Tables 9-13. Time will be dedicated for questions, clarifications and discussions. Information gaps and technical issues should be identified.</p> <p><u>Presentation of national reporting tables 9-13</u> T9 Forest fires T10 Other disturbance affecting forest health and vitality T11 Wood removals T12 Non-wood forest products removals and value of removals T13 Employment in forestry</p>
15:00-15:15	Tea – Coffee break	
15:15-17:30	Item 7 Cont.	Technical session 3 continued.
Agenda, Sunday April 20th 2008		
Time	Item	Agenda notes
09:00-12:00	Item 8	<p>Technical session 4 –Review of reporting tables (Jean-Louis Blanchez, FAO) This session will review the National Reporting Tables 14-17. Time will be dedicated for questions, clarifications and discussions. Information gaps and technical issues should be identified.</p> <p><u>Presentation of national reporting tables 14-17</u> T14 Policy legal framework T15 Institutional framework T16 Education and research T17 Public revenue collection and expenditure</p>
10:00-10:20	Tea – Coffee break	
10:20-12:00	Item 8 Cont.	Technical session 4 continued.
12:00-12:30	Item 9	<p>Workshop closing Concluding discussion Summary of outcome and findings of the workshop Workshop closure</p>

6.4 Annex 4 – Agenda (Fiji workshop)

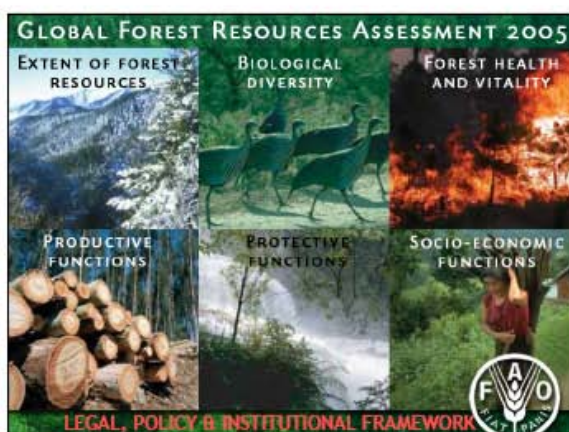
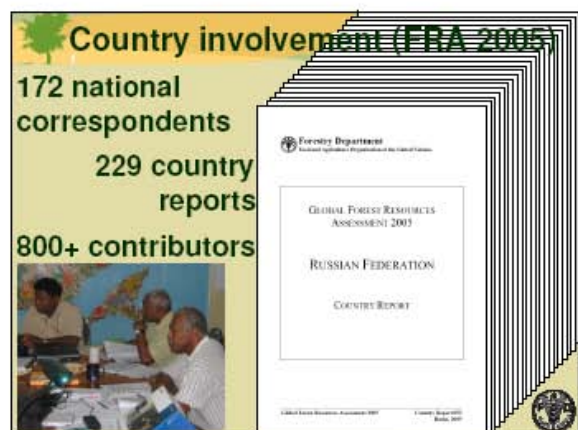
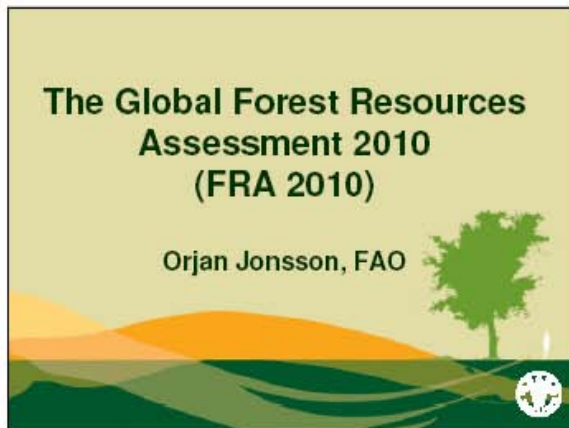
Preliminary Agenda, Wednesday November 19, 2008		
Time	Item	Agenda notes
08:30-09:00	Item 1	Opening session Organization of workshop
09:00-10:00	Item 2	Presentation of FRA 2010 Overview of FRA 2010 and country reporting process Review of methodology for country reporting
10:00-10:30	Tea – Coffee break	
10:30-12:00	Item 3	Status of country reports National Correspondents will make brief presentations (5-10 minutes) on the status of their country reports and also highlight any problems/issues they wish to discuss more in detail during the workshop.
12:00-16:30	Item 4	<p>Technical session 1 –Review of reporting tables This session will review the National Reporting Tables 1-5. Time will be dedicated for questions, clarifications and discussions. Information gaps and technical issues should be identified.</p> <p>Session will begin with a group work session.</p> <p>The group should elect chair and rapporteur</p> <p>ToR Review and go through specified National Reporting Tables. Identify issues and comments related to specific reporting on the tables. The group should try to resolve as many as possible. It is expected that the group present a short summary of questions/issues identified including resolved questions/issues.</p> <p><u>Presentation of national reporting tables 1-5</u> T1 Extent of Forest and Other wooded land T2 Ownership and management rights T3 Forest designation and management T4 Forest characteristics T5 Forest establishment and reforestation</p>
13:00-14:00	Lunch break	
13:30	Item 4 Cont.	Technical session 1 continued.
15:00-15:30	Tea – Coffee break	
15:30-16:30	Item 4 Cont.	Technical session 1 continued

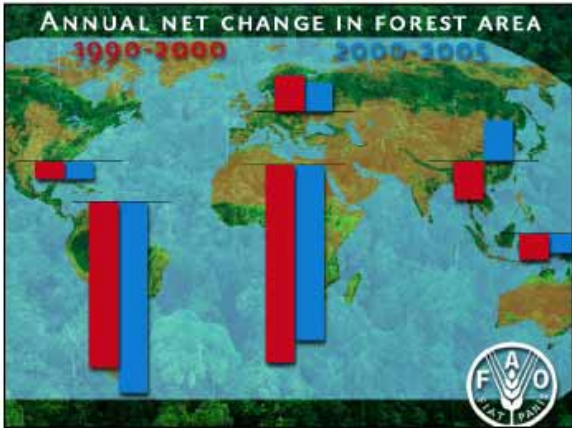
Preliminary Agenda, Thursday November 20 2008		
Time	Item	Agenda notes
09:00-12:30	Item 5	<p>Technical session 2 –Review of reporting tables This session will review the National Reporting Tables 6-8. Time will be dedicated for questions, clarifications and discussions. Information gaps and technical issues should be identified.</p> <p>Group work</p> <p><u>Presentation of national reporting tables 5-8</u> T6 Growing stock T7 Biomass stock T8 Carbon stock</p>
10:00-10:30	Tea – Coffee break	
10:30-13:00	Item 5 Cont.	Technical session 2 continued.
13:00-14:00	Lunch break	
14:00-16:30	Item 6	<p>Special Study on Small Island States Group work (Outline/report with outline)</p>
15:00-15:30	Tea – Coffee break	
15:30-16:30	Item 6 Cont.	Special Study on Small Island States Plenary discussion

Preliminary Agenda, Friday November 21 2008		
Time	Item	Agenda notes
08:30-10:00	Item 7	<p>Technical session 3 –Review of reporting tables This session will review the National Reporting Tables 9-13. Time will be dedicated for questions, clarifications and discussions. Information gaps and technical issues should be identified.</p> <p>Group work</p> <p><u>Presentation of national reporting tables 9-13</u> T9 Forest fires T10 Other disturbance affecting forest health and vitality T11 Wood removals T12 Non-wood forest products removals and value of removals T13 Employment in forestry</p>
10:00-10:30	Tea – Coffee break	
10:30-13:00	Item 8	<p>Technical session 4 –Review of reporting tables This session will review the National Reporting Tables 14-17. Time will be dedicated for questions, clarifications and discussions. Information gaps and technical issues should be identified.</p> <p>Group work</p> <p><u>Presentation of national reporting tables 14-17</u> T14 Policy legal framework T15 Institutional framework T16 Education and research T17 Public revenue collection and expenditure.</p> <p>Workshop closing Concluding discussion Workshop closure</p>
13:00-14:00	Lunch	

6.5 Annex 5 – Presentations

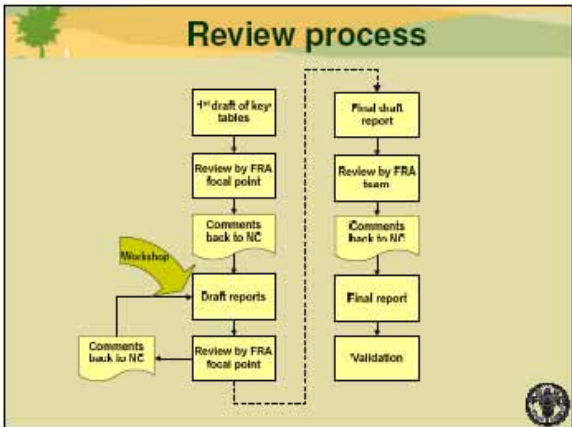
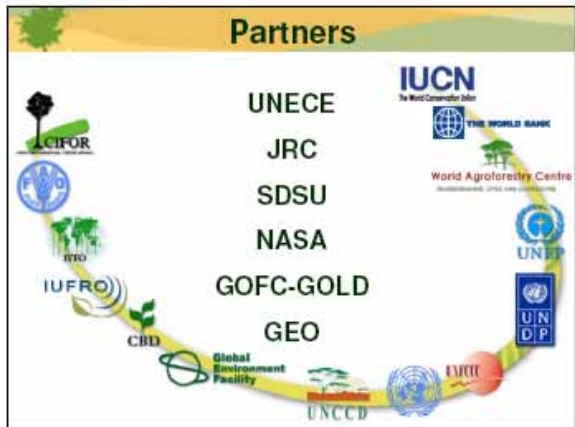
Please note that presentations made by countries can be forwarded on demand. For a copy please send a message to Orjan.Jonsson@fao.org.





Country Reports

T 1	Extent of forest and other wooded land	T 10	Other disturbances affecting forest health and vitality
T 2	Forest ownership and management rights	T 11	Wood removal and value of removal
T 3	Forest designation and management	T 12	NWFP removal and value of removal
T 4	Forest characteristics	T 13	Employment
T 5	Forest establishment and regeneration	T 14	Policy and legal framework
T 6	Growing stock	T 15	Institutional framework
T 7	Biomass stock	T 16	Education and research
T 8	Carbon stock	T 17	Public revenue collection and expenditure
T 9	Forest fires		




Getting started...

- Start early
- Organize the team
- Identify and locate focal points for other reporting processes
- Start with the key tables (T1, T3a, T4a, T6) and send in a draft report with these tables as soon as possible
- Consult with FRA focal point if in doubt or if you need advice



Milestones for FRA 2010

Regional workshops April 2008 – December 2008
Dead line for submission of Country reports March 2009
Deadline for submission of final country reports May 2009
Validation of final country reports July-August 2009



Next steps

- **FRA 2010 was officially launched 3-7 March 2008**
- **2008-2009: Regional workshops (country reports and remote sensing) and bulk of work for countries**
- **2010: Release of Key Findings; Report preparation & dissemination**
- **2011: Final report from global remote sensing survey**



Methodology for country reporting to FRA 2010

1. Documentation of national data and data sources
 2. Analysis of national data
 - Calibration
 - Estimation and forecasting
 - Reclassification
- »» Output National data according to FRA Specifications and reporting years

1. National data and data sources

1. Identify potentially useful data sources
2. Evaluate: content, completeness, quality and compliance with FRA definitions
3. Documentation of data sources
4. Documentation of national definitions and original data

2. Analysis of national data

Calibration
Estimation and forecasting
Reclassification

Example on calibration

National class	1000 hectares
Forest	7000
Bushland	3000
Agriculture	3000
Swamp	850
Urban land	100
Other	850
TOTAL	14800

Calculating the calibration factor

Total land area (FAOSTAT)	15000
Calibration factor (15000/14800)	1.01351

Calibrated national data

National class	1000 hectares
Forest	7095
Bushland	3041
Agriculture	3041
Swamp	861
Urban land	101
Other	861
TOTAL	15000

Estimation and forecasting

- Interpolation and/or extrapolation of data to requested reporting years (1990, 2000, 2005 and 2010)

Example estimation and forecasting

National class	National data		Estimated / forecasted data			
	1987	1999	1990	2000	2005	2010
Forest	7095	6900	7046	6884	6803	6721
Bushland	3041	3100	3056	3106	3130	3154
Agriculture	3041	3150	3068	3159	3206	3250
Swamp	861	850	858	849	845	840
Urban land	101	150	113	154	175	195
Other	861	850	858	849	845	840
TOTAL	15000	15000	15000	15000	15000	15000

In this example,
linear interpolation for 1990 and linear extrapolation for 2000, 2005 and 2010

Reclassification

- Transform data according to national classes to correspond to FRA 2010 categories
- Reclassification matrix

Example on reclassification

National class	FRA 2010 Categories			Total
	Forest	OWL	Other land	
Forest	100%			100%
Bushland	20%	80%		100%
Agriculture			100%	100%
Swamp			100%	100%
Urban land			100%	100%
Other			100%	100%

Analysis of national data

Suggested order of application

1. Calibration
 2. Estimation and forecasting
 3. Reclassification
- »» Ensures documentation of trends according to the national classes

Missing or incomplete data

No field must be left blank
Expert estimates
Use "n.a." not available

Comment fields

1. Comments related to data and definitions
2. Comments on reported trend
3. Other general comments

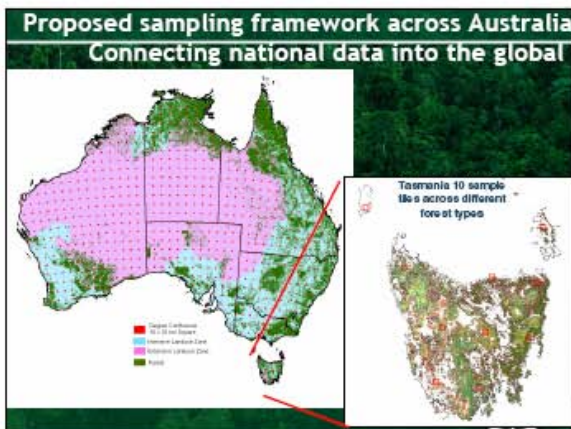
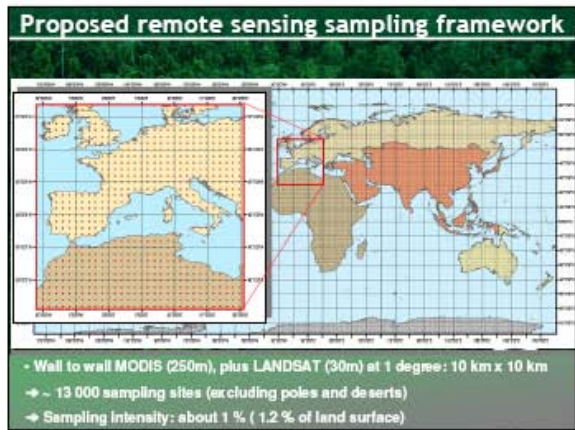
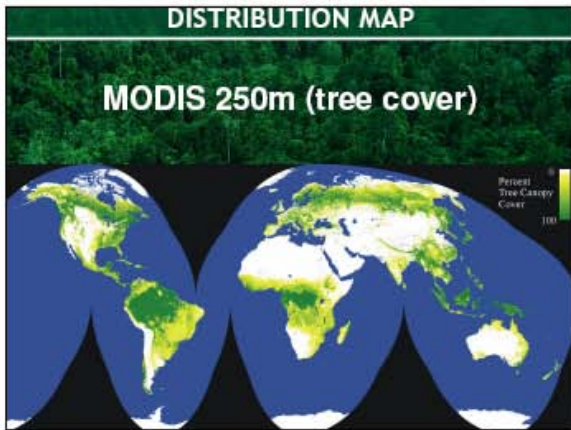
Concluding remark

- Reported data should be traceable back to the original data and data source



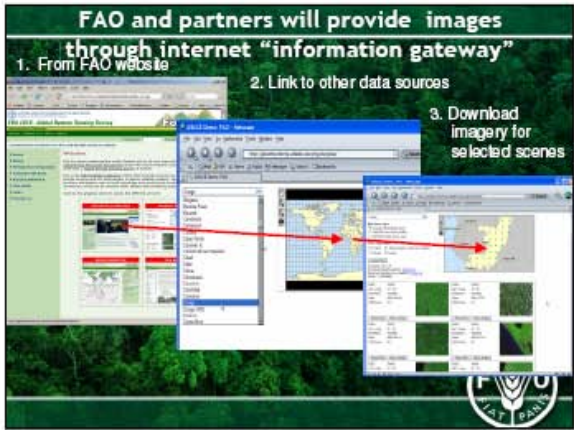
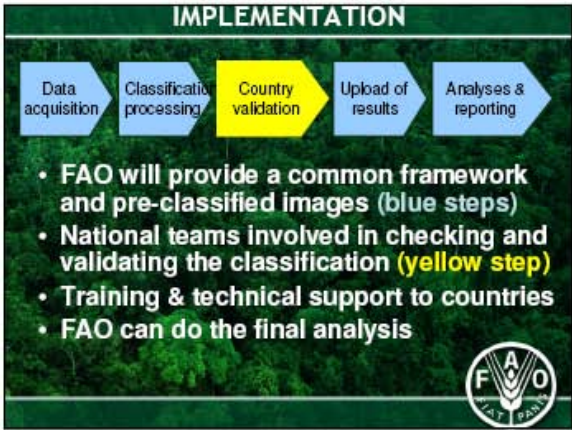
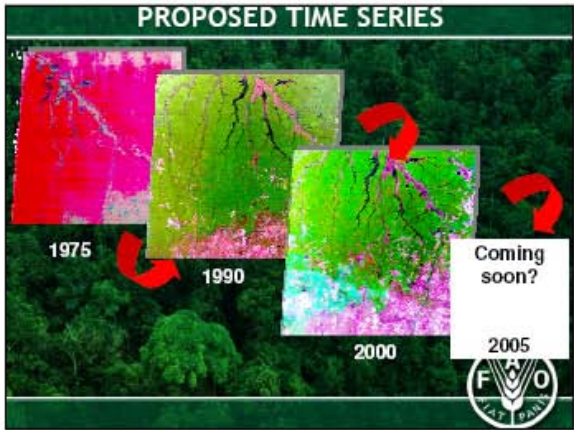
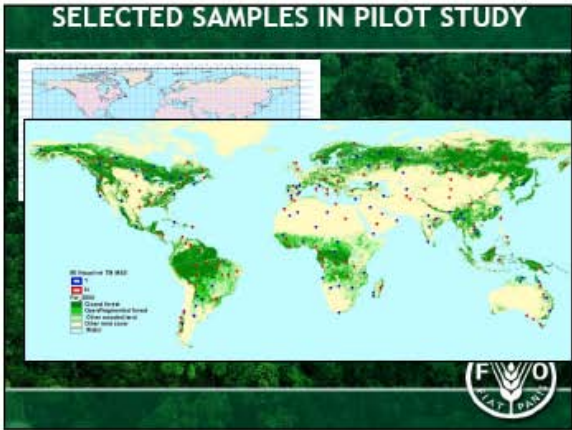
Why are we doing a REMOTE SENSING SURVEY?

1. Complement (not replace) National data
2. Global and regional maps of tree cover
3. Get TRENDS from more consistent data = show where changes are located - deforestation and + afforestation



Pilot study to test the process

- The initial step will be to undertake a Pilot study to test and refine the process before global application
- 20 countries covering wide range of forest types participating in Task Force and Pilot
- using a subset of the global scenes selected across varied biomes



- ### EXPECTED OUTPUTS
1. Global and regional tree cover maps - (not intended to be used at national scale)
 2. Trends in regional, biome and global tree cover from 1975 (if poss.), 1990-2000 and to 2005
 - area change statistics
 - information on tree cover and dynamics
 3. Improved technical skills through capacity building
 4. A framework to support monitoring of forests, land use & environment
 5. Baseline data for further research & modeling
- Primary products

- ### Partners to add expertise and value
- Countries: national agencies, regional hubs
 - FAO
 - Joint Research Centre (Italy)
 - Universities (SDSU, UMD, Jena, Boston, Mississippi)
 - USGS/EROS data center
 - NASA
 - Heinz Center (US)
 - World Bank
 - UNEP
 - World Resources Institute, CI
 - GOF-C-GOLD
 - GEO Secretariat
 - Open to others

NEXT STEPS

- Finalise preparations for the remote sensing survey
- RSS Task Force set up to refine methods, advise & test the process
- 2008-2009: most of the work
 - Hold regional workshops, training etc
- 2010: Data analysis and prepare drafts
- 2011: Final report and maps



THANK YOU

More information is available from:

www.fao.org/fra

fra@fao.org



T1 Extent of Forest and Other wooded land

Rationale:

- Core table for FRA 2010
- Important for assessing state and trends of forest resources
- Widely used in various international reporting processes and conventions

Reporting

- No changes in relation to FRA 2005
- Pre-filled country reports 1990, 2000 & 2005
- Data sources
 - National forest inventory data
 - Forest maps
 - Vegetations and land use maps

T1 Extent of Forest and Other wooded land

FRA categories	Area (1000 hectares)			
	1990	2000	2005	2010
Forest				
Other wooded land				
Other land				
...of which with tree cover				
Inland water bodies				
TOTAL				

T2 Forest ownership and management rights

Rationale:

- Control over and rights to use the forest resources
- Policy, institutional and management issues

Reporting

- Changes in relation to FRA 2005
 - Ownership now refers to the forest resource (the trees) and **not** the land
 - Private ownership has been further sub-divided into several sub-categories
 - Information on management rights of public forests has been added
- Two parts
 - ownership
 - management rights

T2a Forest ownership

FRA 2010 Categories	Forest area (1000 hectares)		
	1990	2000	2005
Public ownership			
Private ownership			
...of which owned by individuals			
...of which owned by private business entities and institutions			
...of which owned by local communities			
...of which owned by indigenous / tribal communities			
Other types of ownership			
TOTAL			

T2b Holder of management rights of public forests

FRA Categories	Forest area (1000 hectares)		
	1990	2000	2005
Public Administration			
Individuals			
Private corporations and institutions			
Communities			
Other			
TOTAL			

T3 Forest designation and management

Rationale:

- Information on how the forests are intended to be managed
- Relates to reporting to other organizations and arrangements (CBD, UNFF, MCPFE, ITTO, etc.)
- Essential for planning and monitoring of impacts of policy measures

Reporting

- Changes in relation to FRA 2005
 - Only covers forest area
 - "Total area with function" has been removed
 - A table on "special categories of designation and management" has been added (T3b)
- T3a – Primary Designated Function is prefilled for 1990, 2000 and 2005

T3a Primary designated function

FRA categories	Forest area (1000 hectares)			
	1990	2000	2005	2010
Production				
Protection of soil and water				
Conservation of biodiversity				
Social services				
Multiple use				
Other (specify)				
No / Unknown				
TOTAL				

T3b Designation and management

FRA categories	Forest area (1000 hectares)			
	1990	2000	2005	2010
Area of permanent forest estate				
Forest area within protected areas				
Forest area under sustainable forest management				
Forest area with management plan				

T4 Forest characteristics

Rationale:

- Degree of human impact
- Monitor forest ecosystems

Reporting

- Changes in relation to FRA 2005
 - Planted forest instead of Plantations
 - Modified natural and Semi-natural merged into Other naturally regenerated forest
 - A table with specific categories of forest types added (T4b)
- T4a – Characteristics – area of primary forest is pre-filled for 1990, 2000 and 2005

T4a Characteristics

FRA categories	Forest area (1000 hectares)			
	1990	2000	2005	2010
Primary forest				
Other naturally regenerated forest				
...of which of introduced species				
Planted forest				
...of which of introduced species				
TOTAL				

T4b Special categories

FRA categories	Area (1000 hectares)			
	1990	2000	2005	2010
Rubber plantations (Forest)				
Mangroves (Forest and OWL)				
Bamboo (Forest and OWL)				

T5 Forest establishment and reforestation

Rationale:

- Monitor progress towards SFM
- Global objectives on forests (UNFF)

T5 Forest establishment and reforestation

FRA categories	Annual forest establishment (ha/year)			...of which of introduced species (ha/year)		
	1990	2000	2005	1990	2000	2005
Afforestation						
Reforestation						
...of which on areas previously planted						
Natural expansion of forest						

T6 Growing stock T7 Biomass stock T8 Carbon stock

- Strongly interrelated
- Consistence between tables
- Consistence between reporting to FRA and to UNFCCC and the Kyoto Protocol

T6 Growing stock

Rationale:

- Productive capacity of the forests
- Planning and monitoring sustainable use
- Basis for biomass and carbon estimates

Reporting

- Commercial Growing stock replaced with Growing stock of commercial species
- Three parts
 - Total growing stock and growing stock of commercial species
 - Composition of growing stock
 - Specification of thresholds
- Trends – need for better information on growing stock per hectare

T6a Growing stock

FRA categories	Volume (million cubic meters over bark)							
	Forest				Other wooded land			
	1990	2000	2005	2010	1990	2000	2005	2010
Total growing stock								
..of which coniferous								
..of which broadleaved								
Growing stock of commercial species								

T6b Growing stock of the 10 most common species

FRA category/Species name			Growing stock in forest (million m ³ over bark)		
Rank	Scientific name	Common name	1990	2000	2005
1 st					
2 nd					
3 rd					
...					
10 th					
Remaining					
TOTAL					

T6c Specification of threshold values

Item	Value	Complementary information
Minimum diameter (cm) at breast height of trees included in growing stock (X)		
Minimum diameter (cm) at the top end of stem for calculation of growing stock (Y)		
Minimum diameter (cm) of branches included in growing stock (W)		
Volume refers to "above ground" (AG) or "above stump" (AS)		

T7 Biomass stock

Rationale:

- Basis for estimating carbon and emissions
- Wood energy

Reporting

- Same categories and definitions as IPCC
- Default conversion factors from 2006 IPCC Guidelines – improved since FRA 2005
- General methodological aspects
 - Biomass conversion and expansion factors
 - No default values for dead wood

T7 Biomass stock

FRA categories	Biomass (million metric tonnes oven-dry weight)							
	Forest				Other wooded land			
	1990	2000	2005	2010	1990	2000	2005	2010
Above-ground biomass								
Below-ground biomass								
Dead wood								
TOTAL								

T8 Carbon stock

Rationale:

- Monitor greenhouse gas emissions
- REDD

Reporting

- National data, when available
- Apply default carbon fraction from 2006 IPCC Guidelines (0.47)

T8 Carbon stock

FRA Categories	Carbon (Million metric tonnes)					
	Forest					OWL
	1990	2000	2005	2010	...	
Carbon in above-ground biomass						
Carbon in below-ground biomass						
<i>Sub-total: Living biomass</i>						
Carbon in dead wood						
Carbon in litter						
<i>Sub-total: Dead wood and litter</i>						
Soil carbon						
TOTAL						

T9 (Forest) fires

Rationale:

- Planning & monitoring of fire management measures
- Climate change & carbon emission calculations

Reporting

- New table
- Two parts
 - area and number of fires
 - proportion wildfire / planned fire
- Thematic study "Fire management – global assessment 2006"
- Five-year average for reporting

T9a Area and number of fires

FRA category	Annual average for 5-year period					
	1990		2000		2005	
	1000 ha	# of fires	1000 ha	# of fires	1000 ha	# of fires
Total area affected by fire						
... of which on forest						
... of which on other wooded land						
... of which on other land						

T9b Proportion of planned fires and wildfires in forest

FRA category	Proportion of forest area affected by fire (%)		
	1990	2000	2005
Wildfire			
Planned fire			

T10 Other disturbances affecting forest health and vitality

Rationale:

- Forest health and vitality
- Control and mitigate impact

Reporting

- Three parts
 - Disturbances
 - Mayor outbreaks of insects and diseases
 - Woody invasive species

T10a Disturbances

FRA categories	Affected forest area (1000 hectares)		
	1990	2000	2005
Disturbance by insects			
Disturbance by diseases			
Disturbance by other biotic agents			
Disturbance caused by abiotic factors			
Total area affected by disturbances			

T10b Major outbreaks of insects and diseases affecting forest health and vitality

Description / name	Tree species or genera affected (scientific name)	Year(s) of latest outbreak	Area affected (1000 ha)	If cyclic, approx. cycle (years)
Disturbance 1				
Disturbance 2				
Disturbance 3				
...				
Disturbance 10				

T10c Area of forest affected by woody invasive species

Scientific name of woody invasive species	Forest area affected 2005 (1000 hectares)
Sp. 1	
Sp. 2	
Sp. 3	
Sp. 4	
Sp. 5	
Total forest area affected by woody invasive species	

T11 Wood removals and value of removals

Rationale:

- Contribution of forest sector to the national economy

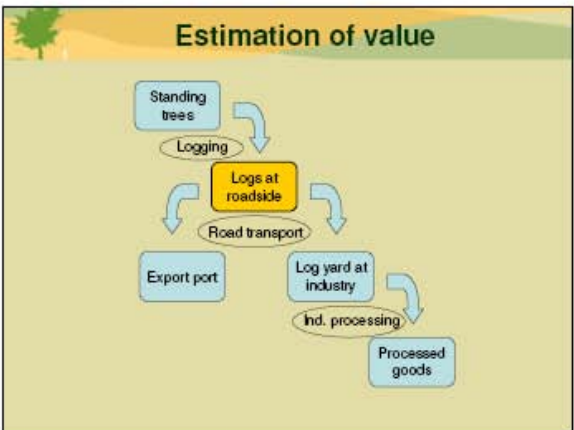
Reporting

- Removals ≠ felling
- Joint Forest Sector Questionnaire (JFSQ) (EUROSTAT / FAO / ITTO / UNECE)
- Volume over bark (o.b.)
- Five-year average

T11 Wood removals

FRA category	Industrial roundwood removals			Woodfuel removals		
	1990	2000	2005	1990	2000	2005
Total volume (1000 m³ o.b.)						
... of which from forest						
Unit value (local currency / m³ o.b.)						
Total value (1000 local currency)						

Name of local currency: 1990, 2000 & 2005



T12 Non-wood forest products removals and value of removals

Rationale:

- Show the importance of NWFPs, both for economy and livelihood of rural people

Reporting

- FRA 2005 table redesigned (Quantity and value of 10 most important NWFPs)
- Data availability an issue
- Focus on commercial products
- Only removals from forest

T12 Non-wood forest products removals and value of removals

Rank	Name of product / Key species	Unit	NWFP removals 2005		NWFP category
			Quantity	Value (1000 loc.cur.)	
1 st					
2 nd					
...					
10 th					
All other plant products					
All other animal products					
TOTAL					

T13 Employment

Rationale:

- Socio-economic importance
- Government policies
- Industry development
- etc.

Reporting

- Changes in relation to FRA 2005
 - Self-employment included in primary production of goods
 - "Management of protected areas" has replaced "Provision of services"
- Compatible with national labour statistics

T13 Employment

FRA categories	Employment (1000 years FTE)		
	1990	2000	2005
Employment in primary production of goods			
...of which paid employment			
... of which self-employment			
Employment in management of protected areas			

T14 Policy and legal framework

Rationale:

- Fundamental basis for SFM
- Integration of forest sector into society

Reporting

- New table in FRA 2010
- Yes/No questions with some complementary information
- nfp-updates
- FAOLEX (<http://faolex.fao.org>)

T14a Policies and Laws (2008)

Forest policy statement with national scope	Yes/No
If Yes above, provide: <u>Year of endorsement</u> and <u>Reference to document</u>	
National forest programme (nfp)	Yes/No
If Yes above, provide: <u>Name of nfp</u> , <u>Current status</u> , and <u>Reference to document</u>	
Law (act or code) on forest with national scope	Yes/No
If Yes above, provide: <u>Year of enactment</u> , <u>Year of latest amendment</u> and <u>Reference to document</u>	
Sub-national forest policy statement	Yes/No
If Yes above, indicate: number of regions/states/provinces with forest policy statements	
Sub-national laws (acts or codes) on forest	Yes/No
If Yes above, indicate: number of regions/states/provinces with laws on forests	

T15 Institutional framework

Rationale:

- Institutions responsible for
 - Policy formulation and implementation
 - Law enforcement
- Technical capacities of institutions

T15a Institutions

FRA categories	2008
Minister responsible for forest policy formulation	
Level of subordination of Head of Forestry with in the Ministry	Subordination to Minister 1 st level 2 nd level 3 rd or lower level
Other public forest agencies at national level	
Institution(s) responsible for forest law enforcement	

T15b Human resources

FRA categories	Human resources within public forest institutions					
	2000		2005		2008	
	#	% Female	#	% Female	#	% Female
Total staff						
...of which with university degree or equivalent						

T16 Education and research

Rationale:

- Capacity for education and research

↓

- Capacity to implement SFM

T16 Education and research

FRA categories	Graduation of students in forest-related education					
	2000		2005		2008	
	#	% Female	#	% Female	#	% Female
Master's degree (MSc) or equivalent						
Bachelor's degree (BSc) or equivalent						
Technician certificate / diploma						
FRA categories	Professionals working in publicly funded forest research centres					
	2000		2005		2008	
	#	% Female	#	% Female	#	% Female
Doctor's degree (PhD)						
Master's degree (MSc) or equivalent						
Bachelor's degree (BSc) or equivalent						

T17 Public revenue collection and expenditure

Rationale:

- Forest sector contribution to government finances
- Government support to the forest sector

Reporting

- New table in FRA 2010
- Two parts
 - government revenues
 - government expenditures

T17 Public revenues and expenditures

FRA category	Revenues (1000 local currency)	
	2000	2005
Forest revenue		

FRA categories	Expenditures 1000 local currency		
	Domestic	External	Total
Operational expenditure			
Transfer payments			
Total public expenditure			

- Reforestation
- Afforestation
- Forest inventory and/or planning
- Conservation of forest biodiversity
- Protection of soil and water
- Forest stand improvement
- Establishment or maintenance of protected areas
- Other, specify below

Thank you for your attention!