



Forestry

The Challenge to Monitor Forest Governance in REDD+ Programs: Exploring Options in Tanzania

Krister Andersson and Ashwin Ravikumar
University of Colorado at Boulder

May 18, 2010



Overview

- Motivation
- Definitions
- The Challenge
- General Approach in TZ
 - Sampling Design
 - Design Test
 - Issues Addressed
- Value-added





Motivation

- REDD+ emphasizes monitoring of carbon and *program* governance
- Compliance will not necessarily help achieve policy goals
- Makes sense to monitor how governance affects *causes and consequences of forest changes*
- We propose a field-based, scientifically sound, and practical approach



Definitions

- **Governance:** A process for developing and enforcing socially binding institutional arrangements
- **Forest governance:** Efforts to design and implement institutional arrangements that affect the ways in which forest resources are accessed and used



Forest Governance Framework

		GOVERNANCE COMPONENTS		
		Actors <i>government, international institutions, civil society, private sector</i>	Rules <i>policy & law content, policy- & law-making processes</i>	Practice <i>implementation, administration, monitoring, enforcement</i>
PRINCIPLES OF GOOD GOVERNANCE	Transparency			
	Participation		Issues: ◇ forest tenure ◇ land use planning ◇ forest management ◇ forest revenues & economic incentives	
	Accountability			
	Coordination			
	Capacity			
Country Profile <i>(key facts and quantitative information relating to forest sector outcomes or outputs)</i>				

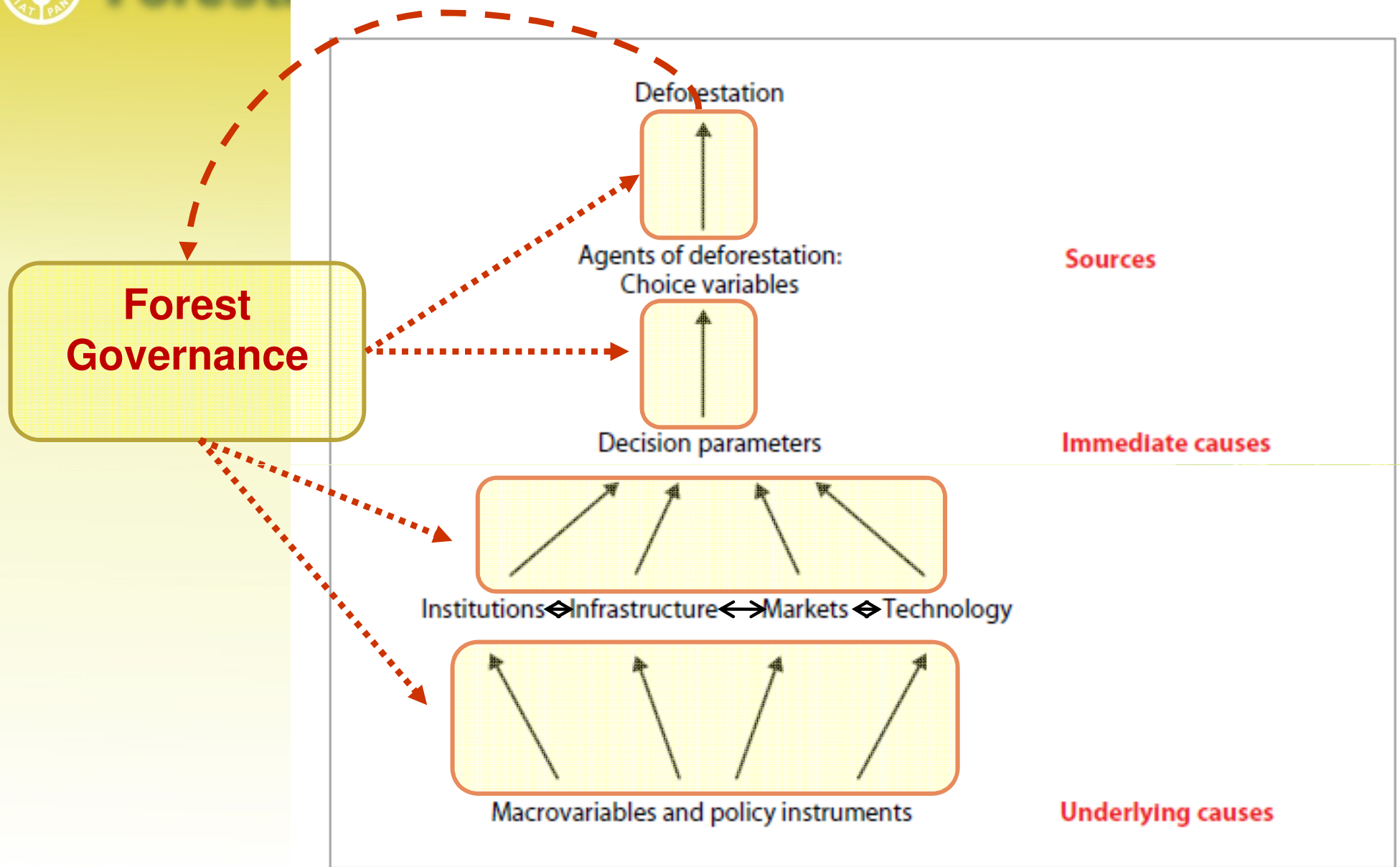


Definitions (2)

- Monitoring
 - the collection of data that can be used to assess progress toward, or movement away from, programmatic objectives
 - may be used for learning how to perform better and to hold responsible parties to account.
- Monitoring of Forest Governance
 - Collecting data on how collective decisions affect forests and their use
 - e.g. deciding on policy responses to drivers of deforestation
- Monitoring of REDD+ Governance
 - How REDD+ programs are governed—who participates and how decisions are made



Forestry



Source: Angelsen and Kaimowitz (1999)



Why is forest governance (FG) important?

- FG performance affects forest conditions, incl. REDD+ outcomes
- If FG quality is low, it can be improved
 - Modify decision process to address transparency, accountability, participation, coordination, and capacity
 - Introduce policies that address underlying forces to deforestation, e.g regulate land use decisions, affect profits in agriculture, forestry
- REDD+ success depends on actors learning *how* to govern forests better (and being rewarded for progress)
 - Requires a monitoring system for both control **and** learning



The Challenge of Monitoring Forest Governance

- **Why** monitor forest governance?
- **What** should be monitored?
- **How** to collect the data?
- **Who** owns the data?





Tanzania's Responses

- Why monitor governance?
 - **Learn** how past decisions affect forests, users, and use
 - **Modify** rules, strategies and their enforcement
- What should be monitored?
 - Stakeholder process of data gap identification
 - Data on forests, use, users and the decisions they make
- How may the needed data be collected?
 - An integrated field-based approach
- Who owns the data ?
 - FBD is in charge



Forestry

TZ Approach to Monitoring Forest Governance



1. Needs assessment
2. Biophysical design
3. Interview design
4. Training
5. Field testing
6. Adjustments
7. Fieldwork
8. Analytical products
9. Decision support



Information Needs

- Interviews with stakeholders
 - Identify priority variables
 - Inventory of existing data
- **How policies affect land use decisions**
- Specific data gaps , i.e.:
 - Energy consumption
 - Forests and food security
 - Reach of government programs, i.e. PFM
 - Anticipated REDD+ reporting requirements





Methods for Governance Data Collection



NAFORMA uses two types of **interviews**

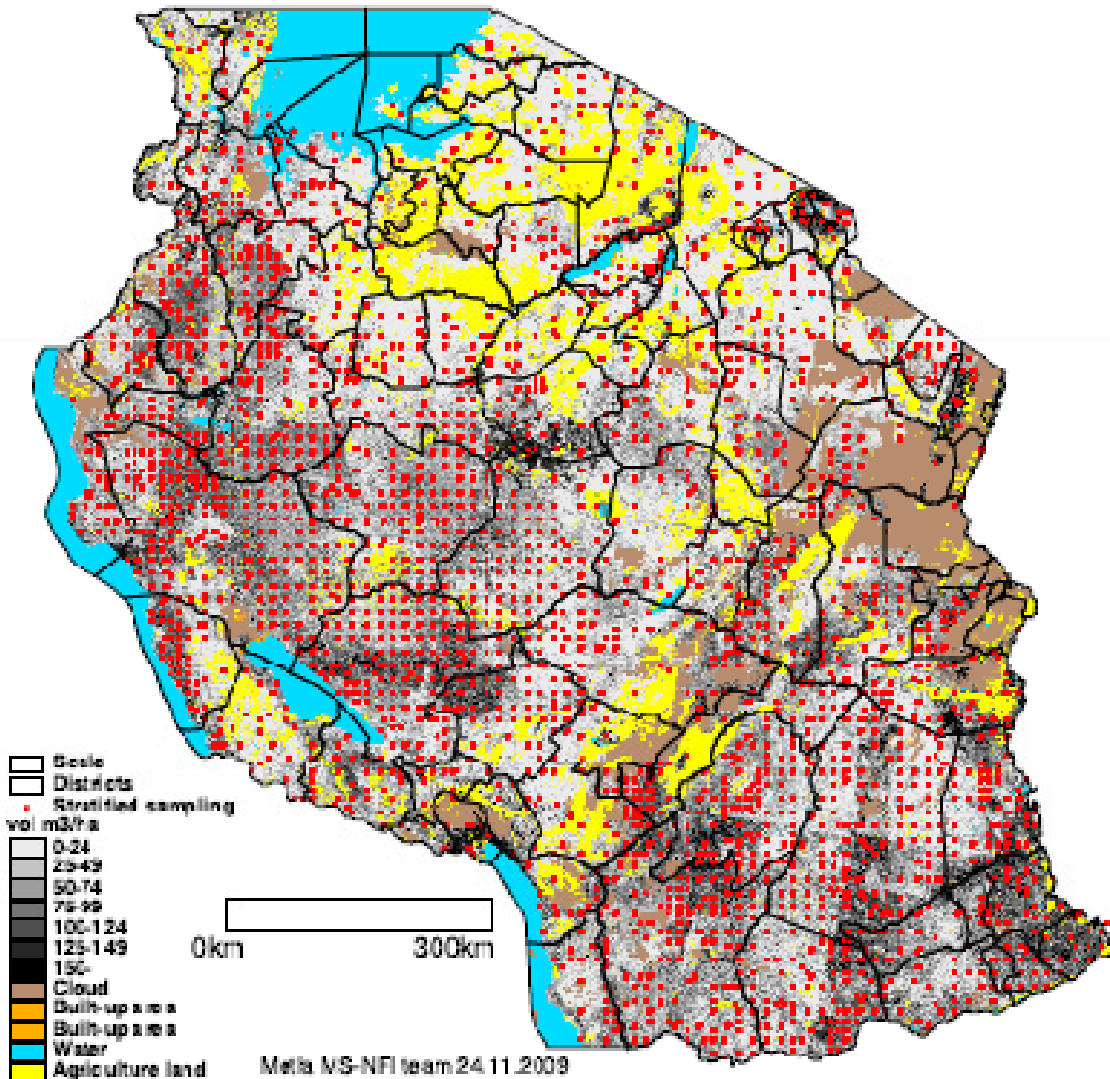
- **Key informants**
(non-probability sample of knowledgeable individuals)
- **Households**
(probability sample)



Interview Sampling Design

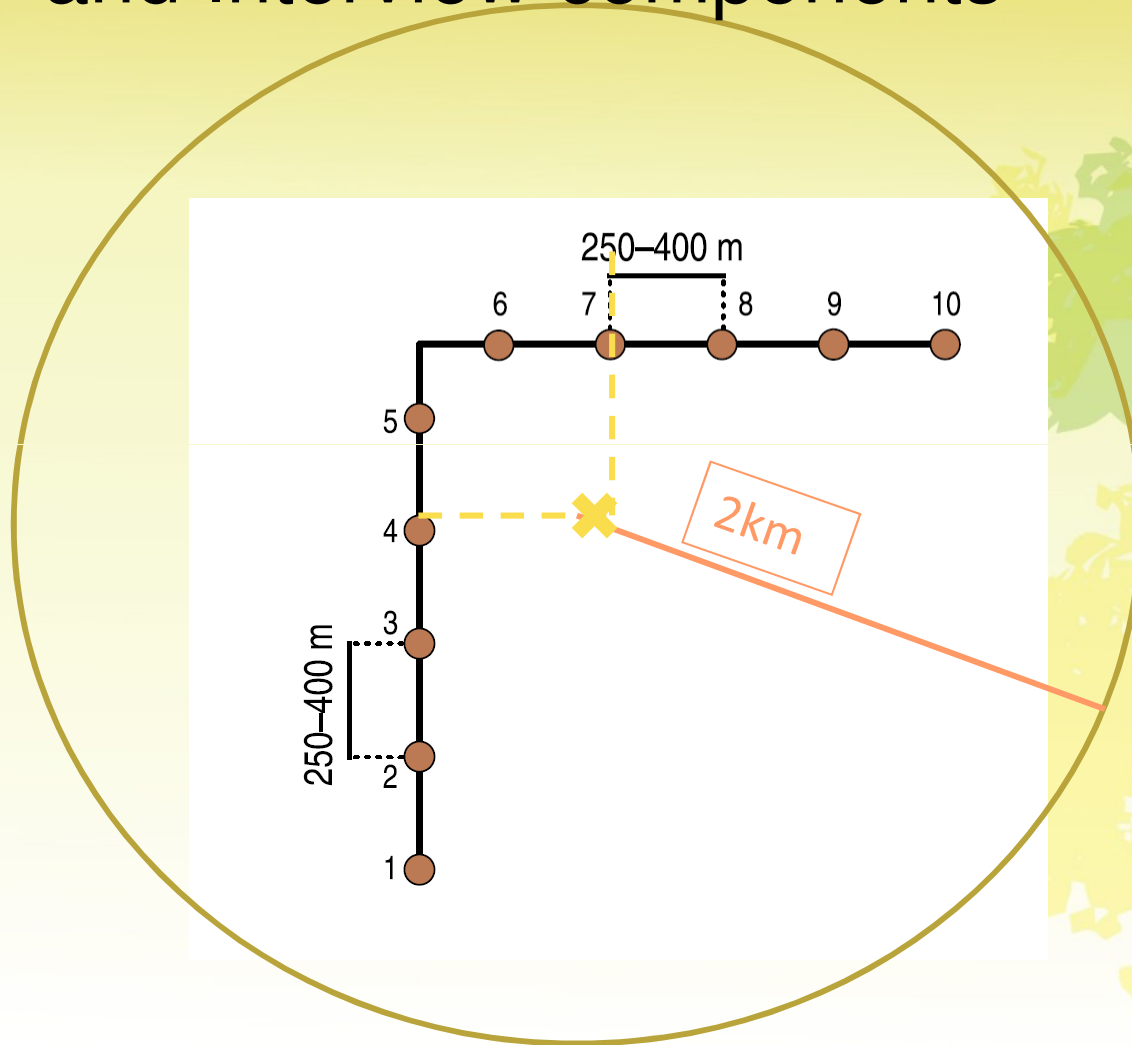
Criteria

- Linked to biophysical
- Capture target population:
 - people living in or near forest
- One-day time budget
- Low additional cost





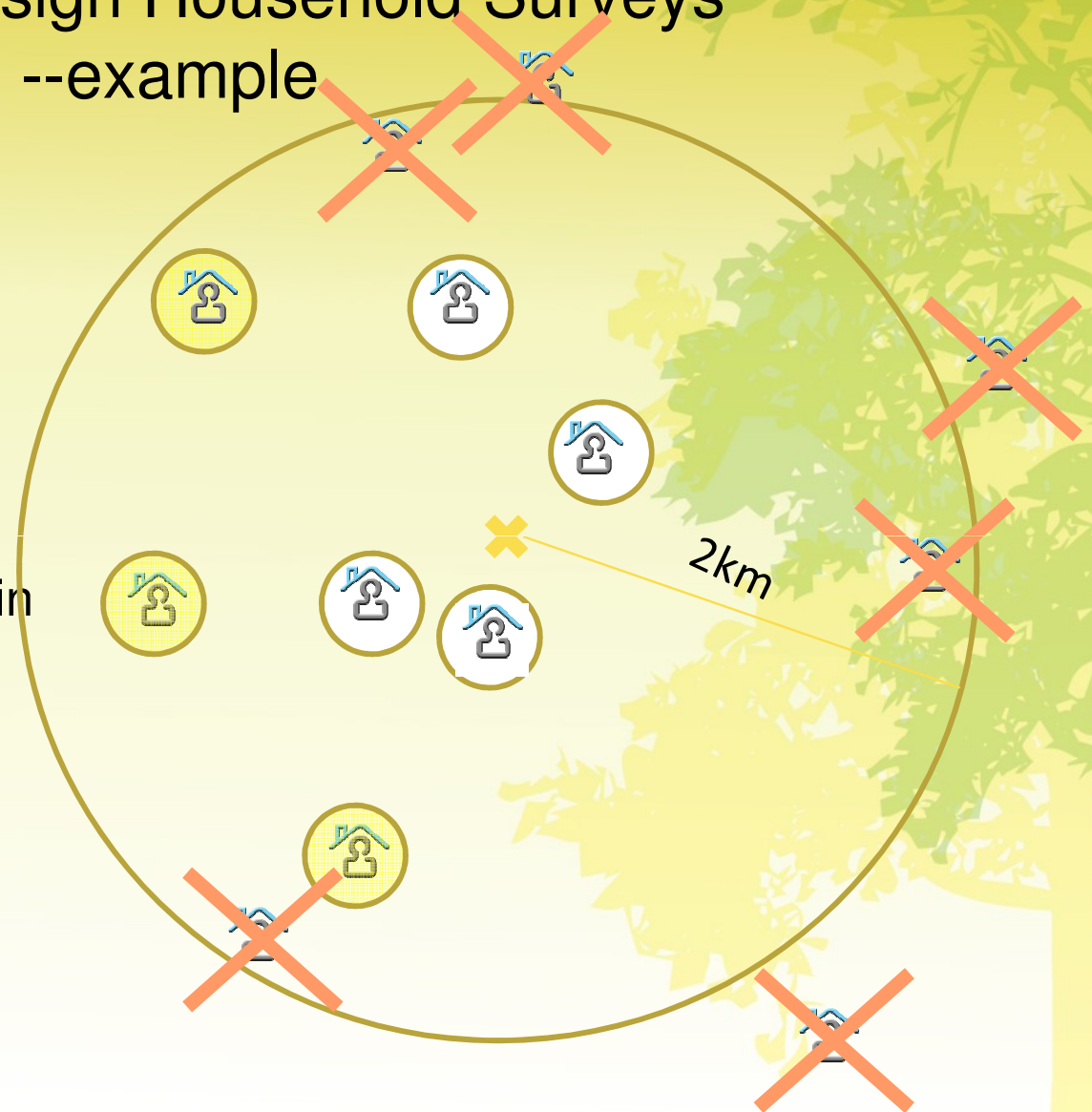
Relationship between Biophysical and Interview components





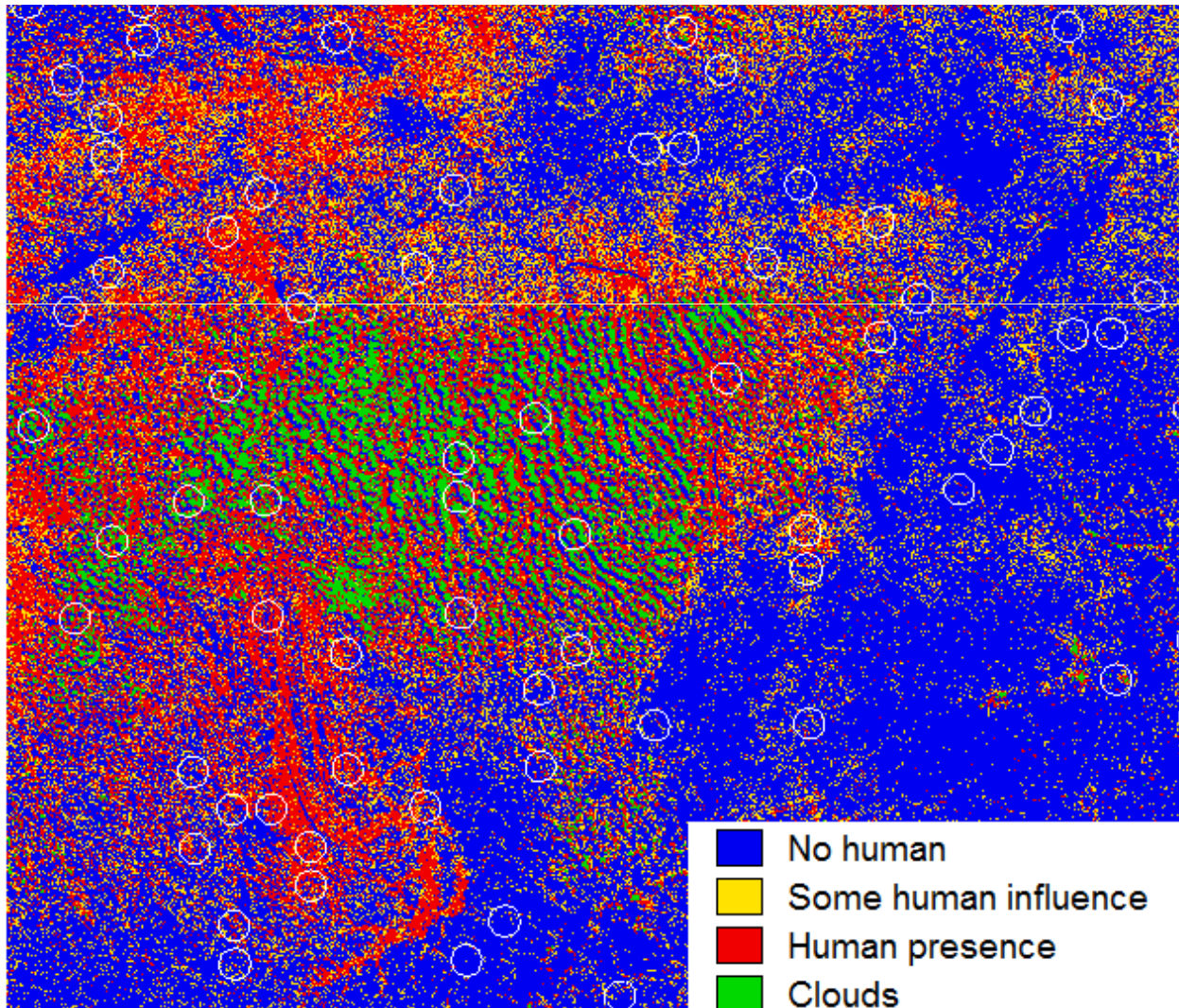
Sampling Design Household Surveys --example

- Selected households ○
- Backups ●
- Not selected ✕
- If there are no households in SU, two HH are selected in nearest settlement
- Conservative estimate:
~5000 HH interviewed





Preliminary test of design





Household Interviews

- Data on forest role for:
 - Food security
 - Energy needs
 - Products and services
 - Sources of livelihoods
- Profitability of land use alternatives
- Relationships with governance actors
- Field-tested and available for comments
- 70 enumerators trained
- Avg. duration <50 min/HH





Key Informant Interviews

- Individuals who know about forest use in the area (i.e. land owners, village elders, etc)
- Cluster level information (rights, conflicts)
- Spatially explicit –with imagery
- Overlap with HH questions for triangulation
- Non-probability sample
- Data useful for hypothesis building and qualitative analysis



Is it worth it?

Benefits

- Responds to national needs
- Affordable
- High variability captured: (n>5000 households)
- Explanatory power for drivers
- Allows for robust sub-national policy analysis
- Basis for monitoring of governance of forests and REDD+ policies

Drawbacks

- Rare, but potentially influential users are under-sampled (e.g. rich users)
- Government may or may not allow for meaningful participation in
 - Data collection
 - Processing
 - **Analysis**
- Will need modification to respond to monitoring of REDD+ program governance



Take-home messages

- REDD+ requires investments in monitoring of
 - forest carbon pools (methods exist)
 - REDD+ program governance (methods?), and possibly
 - Quality of forest governance (methods?)
- It makes sense to invest in field-based monitoring of how forest governance because:
 - A transparent and participatory governance of REDD+ programs will not necessarily produce better outcomes for carbon or livelihoods;
 - Improving forest policy outcomes requires learning about causes of forest change *and* the effects of past interventions, and
 - A field-based monitoring system for forest governance is affordable and useful for policy learning.