

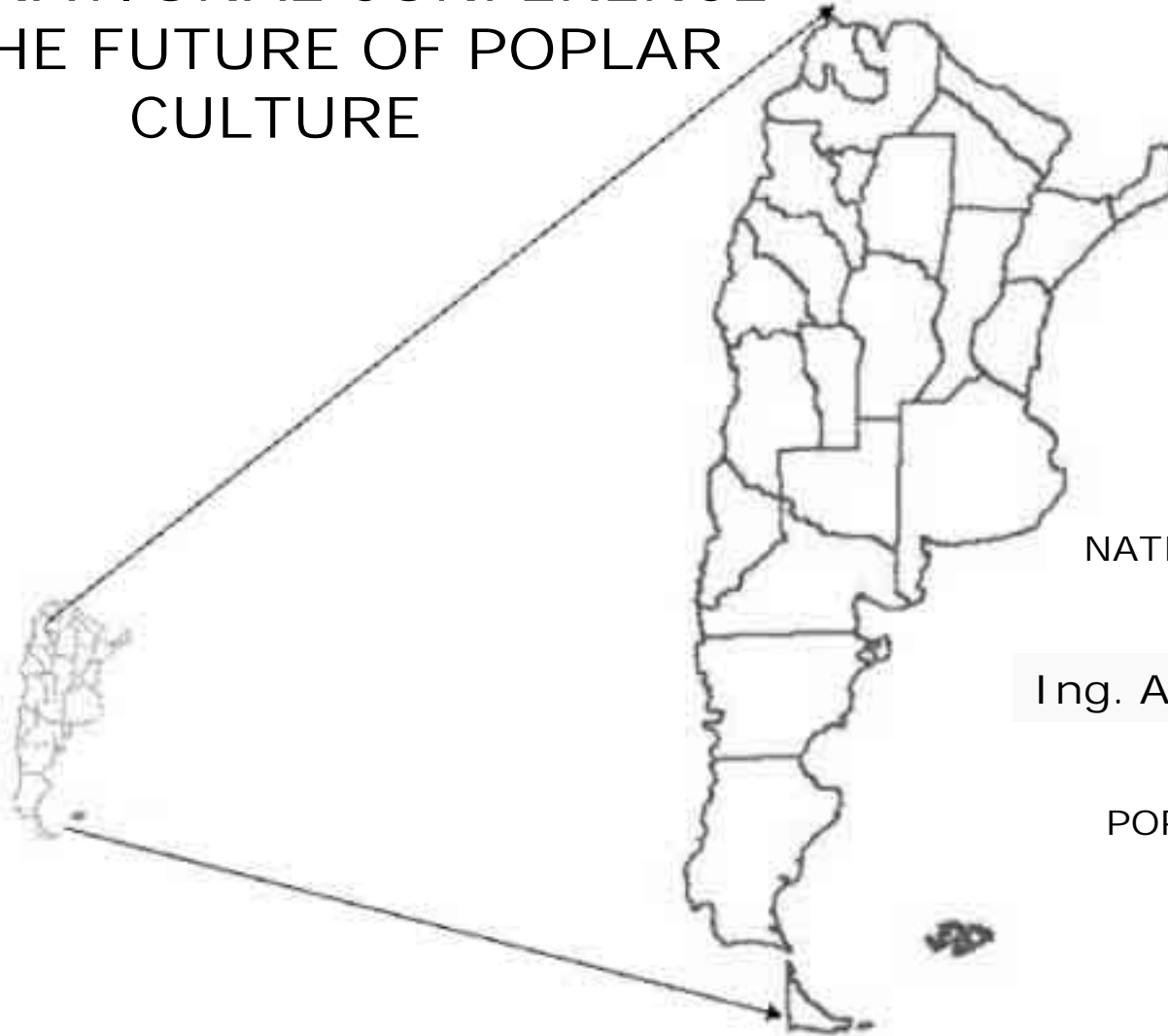


**ARGENTINE REPUBLIC**

**SECRETARIAT OF AGRICULTURE,  
LIVESTOCK, FISHERIES AND FOOD**

**FOREST DIVISION**

# INTERNATIONAL CONFERENCE ON THE FUTURE OF POPLAR CULTURE



NATIONAL FOREST PLANTATION  
DIRECTOR

Ing. Agr. José Luis DARRAI DOU

POPLAR NATIONAL COMMISSION  
TECHNICAL SECRETARY

Ing. Agr. Elvira PETRAY

# ARGENTINE REPUBLIC



## SALICACEAS PLANTATIONS REGIONS



Source: First National Inventory of Forest Plantations - 1998 -

# Paraná Delta Region

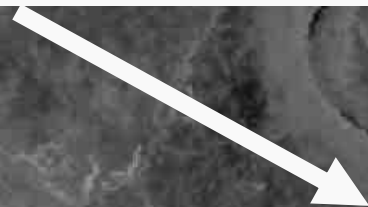


Poplars have been implanted in a surface covering 47.826 ha being the major cultivated area of Salicaceas and representing the 47,9% of the total cultivated area of the Province of BuenosAires

Poplar plantations are used to produce pulp, particle boards and sawnwood.

PROVINCE OF BUENOS AIRES –  
DELTA REGION OF THE PARANA  
RIVER

POPLAR PLANTATION



SATELLITE IMAGE -  
LANDSAT 7 ETM  
PATH ROW 225-84 ,  
FEBRUARY 2002



# Cuyo Region



Poplars are cultivated with double purpose:  
shelter to fruit, packaging and high quality wood

# High Valley of the Río Negro Region



Important agriculture and agro-industrial center with large areas of fruit plantations and the largest packaging plants for the exportation of fruit

Fruit packaging made  
of poplar wood.

High Valley of the  
Río Negro  
Region



# THE NORTHWESTERN REGION



INTERNATIONAL  
CONFERENCE IN THE  
FUTURE OF POPLAR  
CULTURE

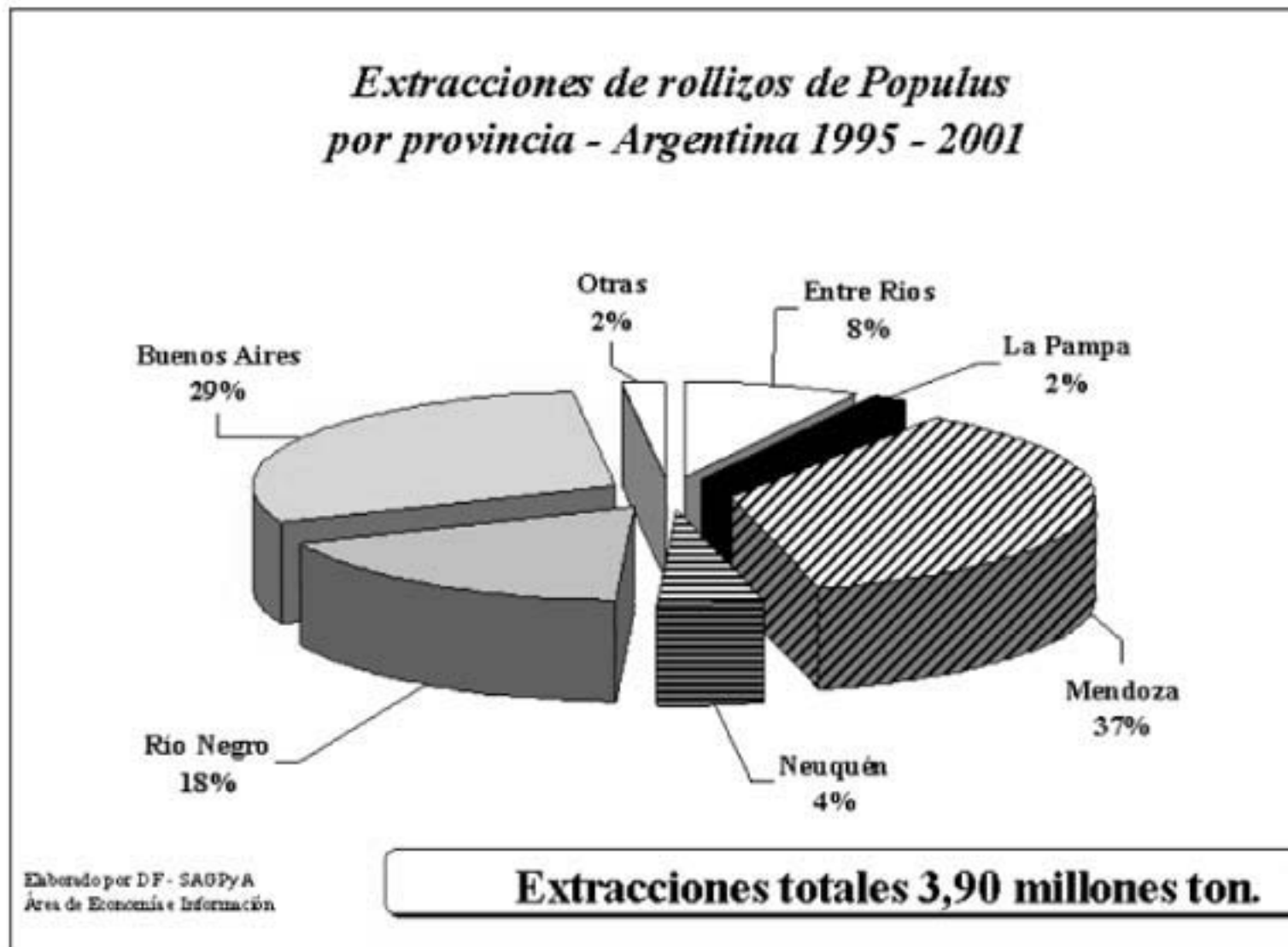
NATIONAL SURFACE OF PLANTATIONS (ha)  
2002

Provincia /Region					Totales
	Coníferas	Eucalyptus	Salicaceas	Otras	
Misiones	313,721	24,911	-	46,316	384,948
Corrientes	232,461	95,773	-	810	329,044
Entre Ríos	11,712	90,048	15,919	13,386	131,065
Buenos Aires	6,905	36,920	47,826	8,118	99,769
Patagonia	48,320	-	19,595	695	68,610
Noroeste	6,898	16,054	204	756	23,912
Centro	34,221	12,095	2,483	-	48,799
Resto	1,749	3,031	23,377	1,351	29,508
Totales	655,987	278,832	109,404	71,432	1,115,655

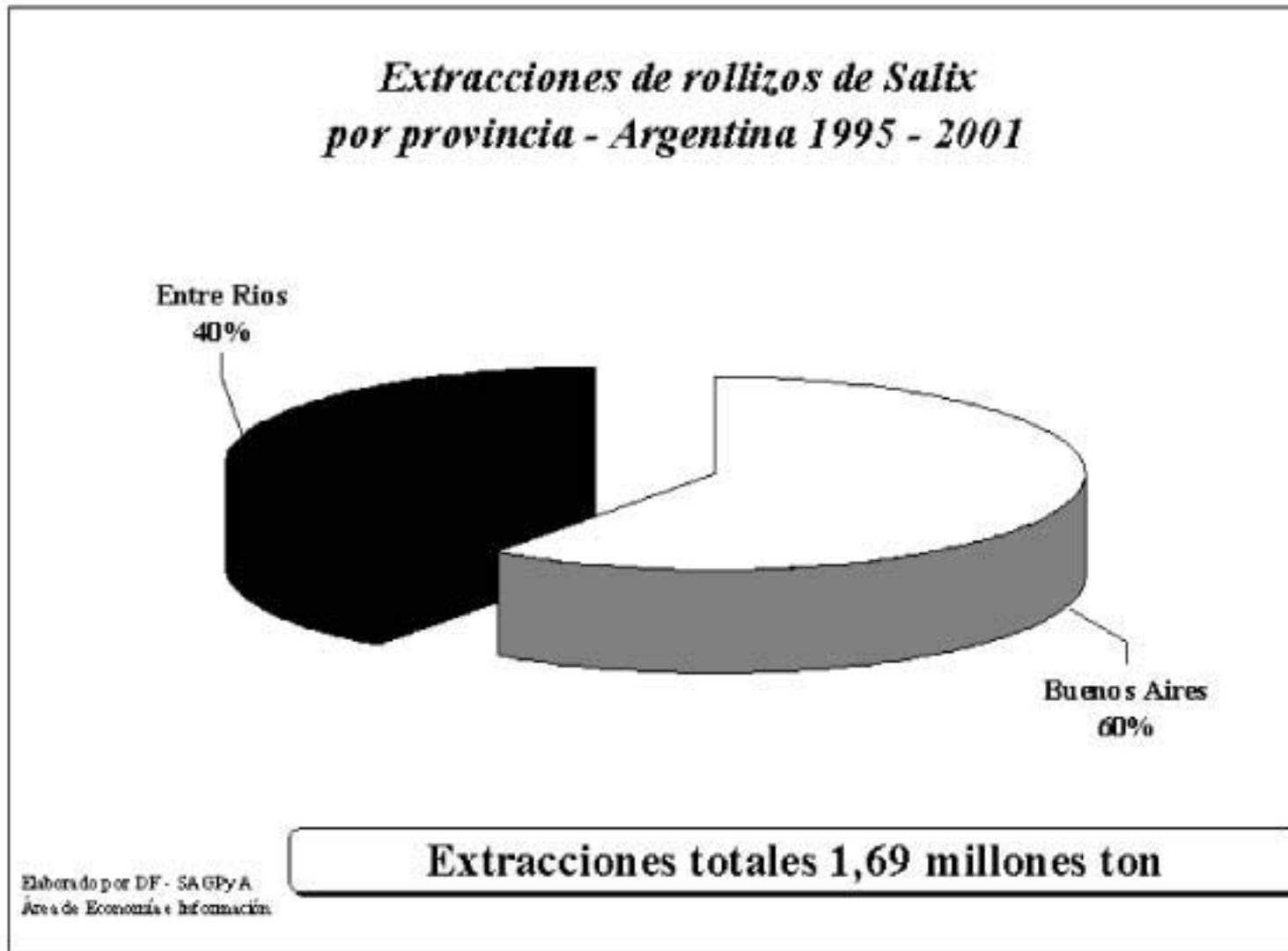
# Extraction Salicaceas roundwood destiny



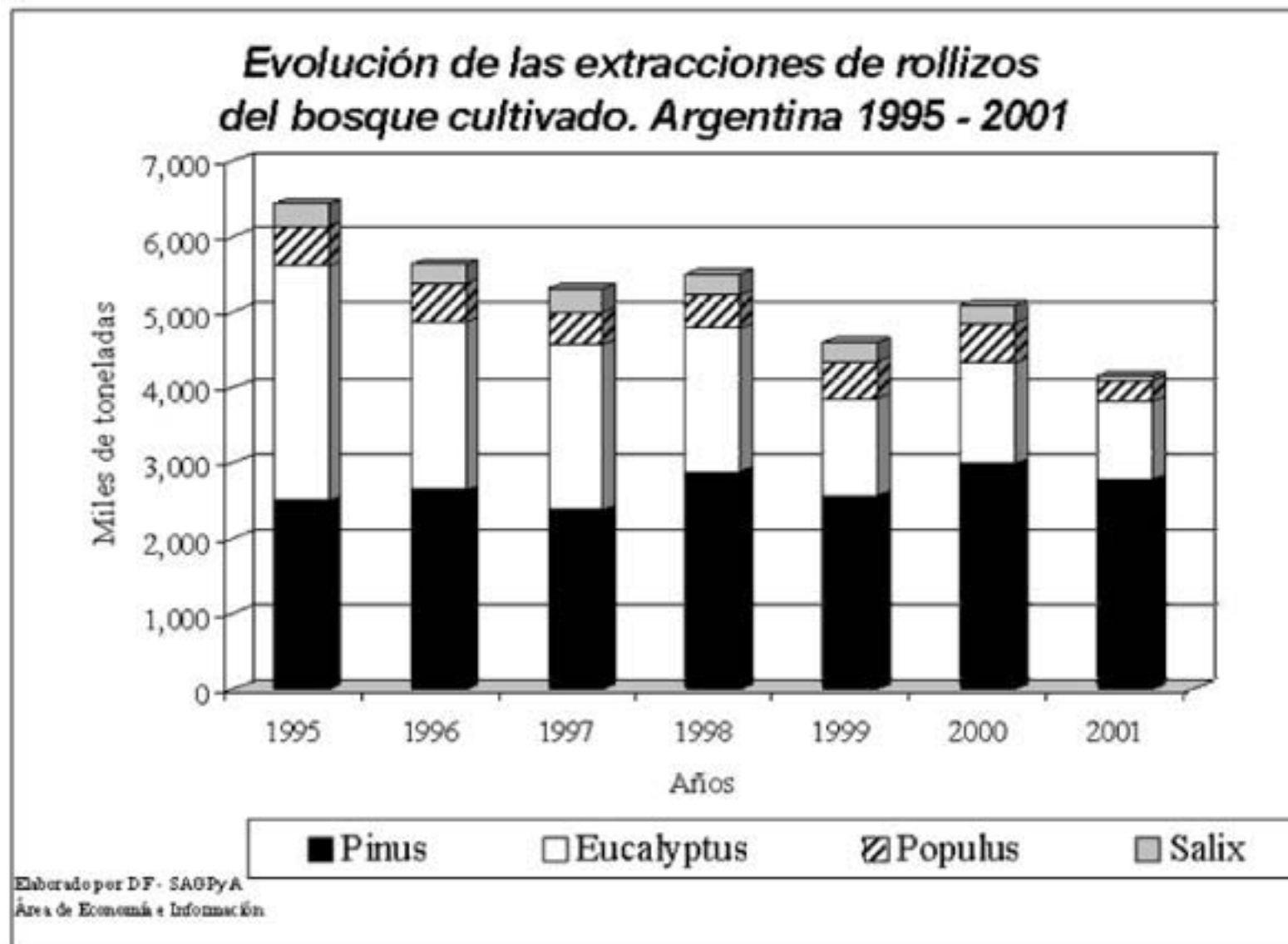
# Extraction of Populus roundwood by province



# Extraction roundwood Salix by province



# Evolution of roundwood extraction from plantations



# DESIGN MANAGEMENT IN THE SALICACEAS VALUE CHAIN

THIS MARK A STEP IN OUR WORKING PROGRAM  
"MATERIALS FOR INNOVATION"

Design as a tool to provide value to our  
forest resources



Our dedication and efforts keep committed to contribute with greater information and collaborate with the growth of Argentine´s forest production

We are very pleased to participate in this event and I would like to thank you for the hospitality that we have received during our visit

# INTERNATIONAL CONFERENCE ON THE FUTURE OF POPLAR CULTURE



NATIONAL FOREST PLANTATION  
DIRECTOR

Ing. Agr. José Luis DARRAIDOU

POPLAR NATIONAL COMMISSION

TECHNICAL SECRETARY

Ing. Agr. Elvira PETRAY