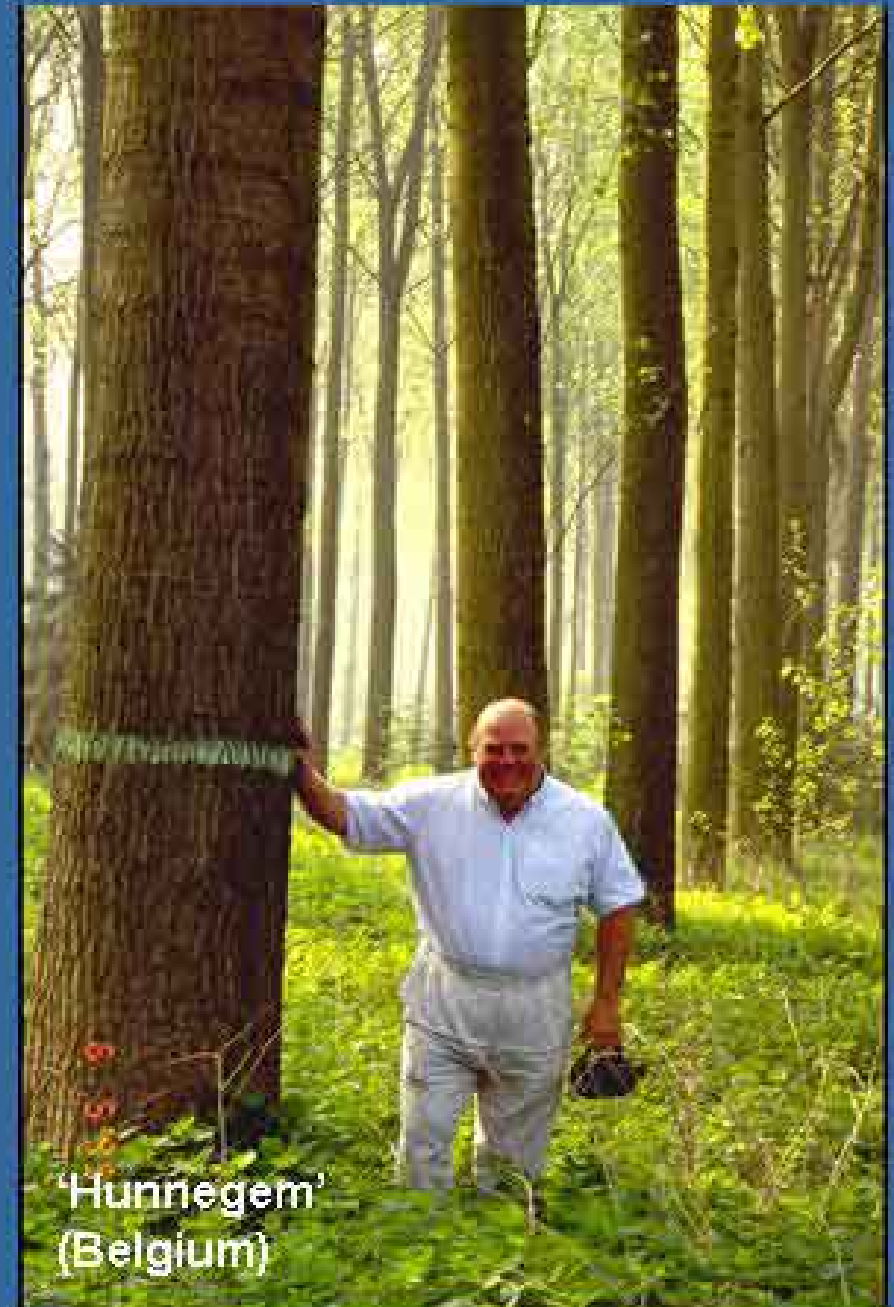


What is it that makes of poplar a very special tree?



'I-214' (Italy)

**FAST
GROWTH**



'Hunnegem'
(Belgium)

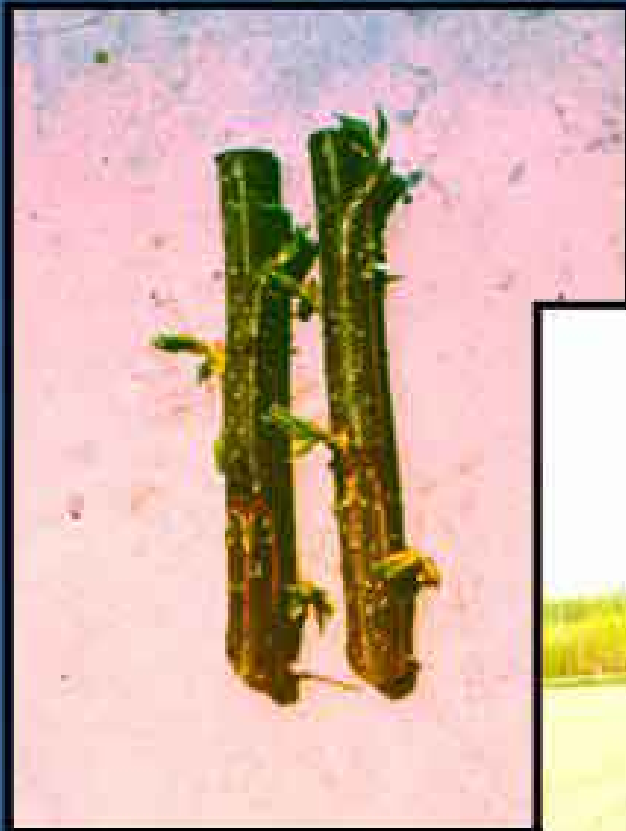
What is it that makes of poplar a very special tree?

EASY CROSSABILITY



What is it that makes of poplar a very special tree?

EASY VEGETATIVE PROPAGATION



ADVANTAGES OF VEGETATIVE PROPAGATION

Vegetative copies of individuals make breeding processes faster and more efficient

Cloning makes superior cultivars available to the market in a very short time

Clonal cultivars make production uniform in terms of size at harvest and wood quality

DISADVANTAGES OF CLONAL CULTURE

Reduced diversity

Epidemiological risks



Mosaics of monoclonal stands

“Poplars can be bred to order”

(E. Schreiner, 1949)



Spain: $60 \text{ m}^3 \text{ ha}^{-1} \text{ y}^{-1}$

Breeding for resistance to diseases



Melampsorae



PMV



Venturia populina

Marssonina brunnea





**Discosporium
populeum**

Resistance to insects





Saperda carcharias



Saperda carcharias



Cossus cossus



**Gypsonoma
aceriana**



**Cryptorhynchus
lathyrus**

**A large number of harmless insects
supports many species of birds**







