

*CEPF – The European  
network for forest owners*

**Atilla LENGYEL, Ph.D.**  
*Policy adviser CEEC*



*Table of contents*

1. On CEPF
2. Private/family forestry in Europe
3. Networking
4. Summary

C E P F



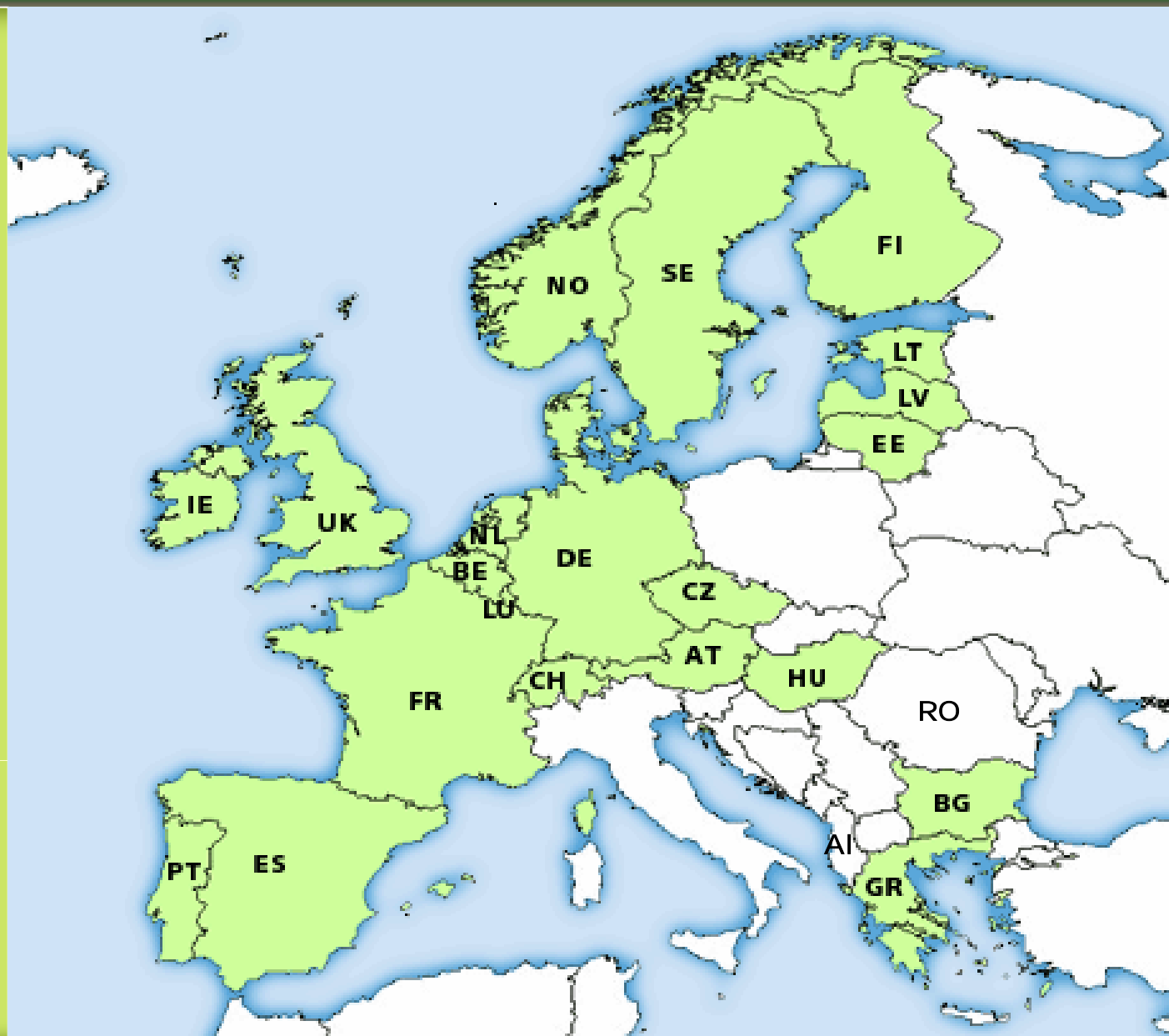
## 1. On CEPF

# CEPF – the umbrella organisation of family forestry in Europe

- Founded in 1996 (1961)
- Current membership of 24 national forest owner associations from Europe – international NGO
- Represents the interests and provides the expertise of family forest owners towards the European Institutions (European Commission, European Parliament, Economic and Social Committee)
- Active participation in international and global forest policy discussions (e.g. MCPFE, UNFF, UNFCCC, WSSD, CEPF – focal point for the Major group “Small forest owners” in UNFF, IFFA - International family forestry alliance)
- European network for forest owners



**1. On CEPF**



## 1. On CEPF

### Core activities of CEPF

- **Member in different EC Advisory Committees** (Forestry & Cork, Rural Development, Forest Based Industry)
- **Lobbying different European Institutions**
  - e.g. DG Agriculture, Environment, Enterprise, Trade,
  - e.g. EU Parliament (contact to MEP´s)
- **Internal Working Groups**
  - Rural development, Forest Fires
  - Bioenergy, Cooperatives
  - Communication, Research
- **External Working Groups**
  - Wood Chain core group: **CEPF**, **CEI-Bois** (Woodworking industries)+ **CEPI** (Pulp and Paper Industries)
  - Natura 2000 users forum
  - Enhanced Use of Wood



**2. Private /  
family  
forestry  
in Europe**

- 60% of EU 15 forests are owned and managed by families – generation bridging management and experience
- 36% estimated share of private forestry in CEEC
- Small scale forest holdings (average size: EU15=5 ha; CEEC= 2 ha)
- 16 million family forest owners (EU 27)
- 1,8 million direct members in CEPF
- Multifunctional forest management balancing economic, social, ecological and cultural requirements respecting the diversity across Europe
- Local ownership, contributing to economic and social sustainability of communities



## 2. Private / family forestry in Europe

- Millions of forest owners emerged in last 10 years
- Small scale forest property dominates (> 5 ha)
- Often no owner interest in small-scale forest management + privatisation process still in progress  
**high share of private forests not managed**
- Low financial and investment level in private forestry sector generally
- Interest representation of PFO is not yet effective (problems of human capacity and infrastructure, financial means, organisational degree, no national level representation)
- **Low/not satisfactory recognition of PF sector in national policy setting (forestry, rural development, environmental policy)**
- Changes of state forestry administration's role – planning, supervision, extension      strong dominance
- Problems of understanding of private property on forests in public administration and regulation



## 2. Private forestry sector in EU 10

- National associations in place (Baltics, Cz, Sk, H, Bu, Sl, Ro, Al, Mac)
- International organisations active in PF (FAO, IUCN, SNV, PEFC, MCPFE....etc.)
- With EU membership new financial sources got accessible depending on national priorities
- New forest policy processes offer a chance to get involved in framework setting – NFP processes

## 3. Networking

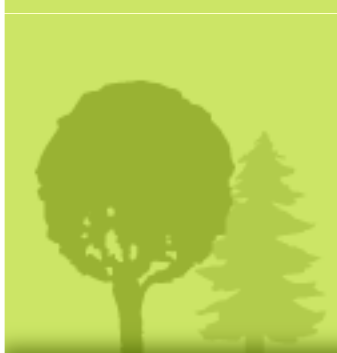
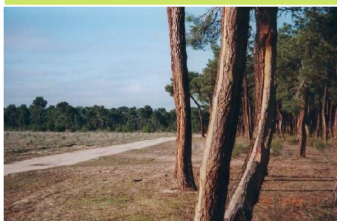
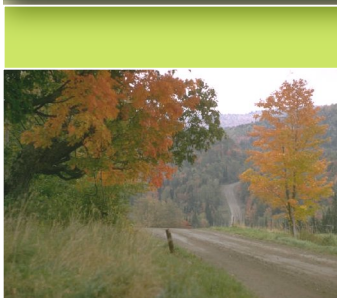
- Networking
  - Associations acting at the policy level
  - Different geographical scope – national, regional, international
  - Different topics – from RD to Bioenergy and environmental issues, legal regulation details
  - Challenges trigger cooperation need
  - Networks of information and cooperation must be built up
  - For private forest owner associations in Europe CEPF provides an effective network option
  - Information, advice, projects, lobbying at EU level



#### 4. Summary

- EU with bigger resources and markets – EU as producer & exporteur (e.g. paper, panels...etc.), large consumer
- In private forestry problems are to be divided at technical, policy and organisational level
- High demand for coordination of forestry related issues within the EU and among the MS, and private and civil sector/society
- Increased need for cooperation of concerned private organisations and for capacity building
- Increased need for state administrations to cooperate with private sector organisations in policy setting (owner org., industry org., NGOs)
- PFOs' action is necessary to assist policy aims being achieved
- Networks for information, cooperation and joint lobbying is needed





Thank You for attention!

**CONTACTS:**

**Atilla LENGYEL, Ph.D.**

*Policy adviser CEEC*

CEPF Contact Office Budapest

Benczúr street 34, H-1068 Budapest

Phone +36 27 769045,

Fax +36 1 351 70 29

**[www.cepf-eu.org](http://www.cepf-eu.org)**

**e-mail : [lengyel@cepf-eu.org](mailto:lengyel@cepf-eu.org)**

