

:

:

1947

1995/1/1

()

1-5

1-1-5

(" ")

: -1

· (" ")

:

- -2

()

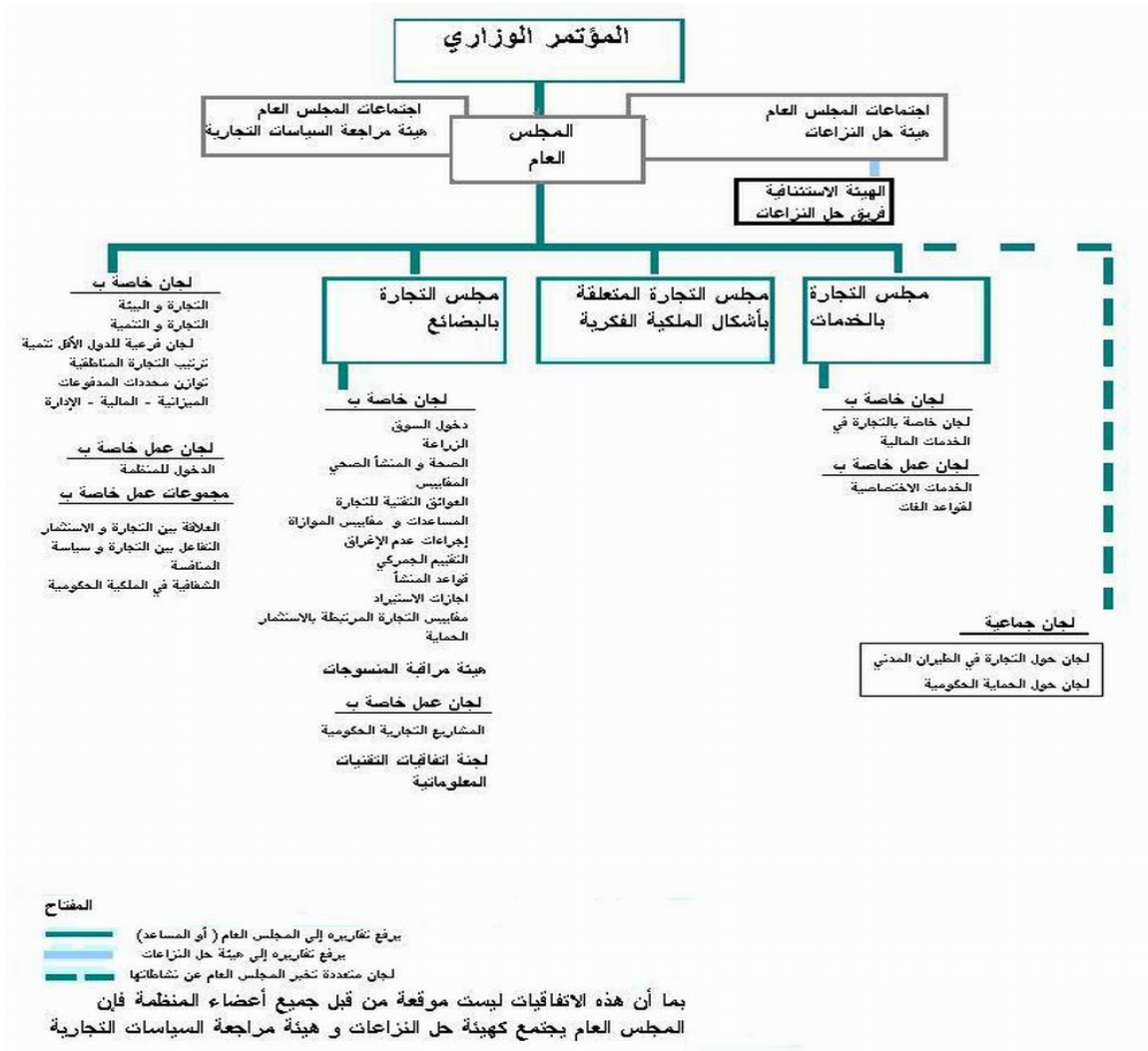
: -3

-4

-5

()
(" ")

2-1-5



() ()

()

" "

:

148

2003

1995

() -

() -

(TRIPs -) -

11

- - -)

. (..

()

()

3-1-5

.
:

" "

: .

. ()

" "

()

140

:

()

()

:

)

42

(2001 -

(2) "

"

2-5

1-2-5

(12)

"

/

(12)

"

(12)

()

:

-
-
-
-
-

()

()

()

)

(

2-2-5

:

()

/

3-5

2003

24

148 147

. ()

1-3-5

/

. (8 - 6 - 4)

: 1-5

. ⁴³ %34.9 %10.4
%33.9

. %30.5 %20

. %20

%18.4

. %30 %26.1

2-3-5

. %20.1 %4.8

_43

"

"

"

"

. (2) "de minimis"

. "de minimis"

%8.5

de minimis

3-3-5

)

(

2-5

() 10

() 5 15

4-3-5

12

()

4-5

:

-

- - -

(- - -):

- - - - -

...

- -



- - : - -
 - - (1)

... -

- - : -

(2)

- () ()

- - -

- - (3)

() :

- 4 -)
 (

- - -
- -
- - :
-
-
(5)
-
(6)

-

- - -

-

-)

. (- - - -

(7)

. /
- -
- -
- -

-)
(-

-
(8)
(8) - -



-

-

3-2

:

:

:

-

-1

-2

-

-

)

-3

(

:

:

:

()

:

:

:

:

: (AGR)

$$AGR = \left[\left(\frac{Y_T}{Y_0} \right)^{\frac{1}{T-1}} - 1 \right] * 100$$

$= Y_T$
 $= Y_0$
 $= T$

. i

Herfindahl-Hirschman

()

$$EN_i = \frac{1}{\sum_j \left(\frac{E_j}{\sum_j E_j} \right)^2}$$

$= E_j$

. i

: (QI) ()

. ()

$$QI = \frac{\sum_i p_0 q_t}{\sum_i p_0 q_0} * 100$$

(1991-1989) = p_o

= q_t

(1991-1989) = q_o

) f.o.b

: (EV)

. (1991-198

)

(

$$EV = \frac{\sum_i p_t q_t}{\sum_i p_0 q_0} * 100$$

= i
 = p_t
 = p_o
 = p_o
 = q_o

() c.i.f : (IV)

$$IV = \frac{\sum_i p_t q_t}{\sum_i p_0 q_0} * 100$$

= i
 = p_t
 = p_o
 = q_t
 = q_o

() () : (UV) ()

$$UV = \frac{\sum_i p_t q_0}{\sum_i p_0 q_0} * 100$$

= i
 = $-p_t$
 (1991-1989) = p_o
 (1991-1989) = q_o

(RUV)

()) 1 . (" " () " " 1

$$RUV = \frac{E_{is}/Q_{is}}{E_{iw}/Q_{iw}}$$

$$= i$$

$$i = E_{is}$$

$$i = Q_{is}$$

$$i = E_{iw}$$

$$i = Q_{iw}$$

(RCA)

$$RCA = \frac{E_{is}/E_{iw}}{E_s/E_w}$$

$$= i$$

$$i () = E_{is}$$

$$= E_s$$

$$i () = E_{iw}$$

$$= E_w$$

(SI)

i

$$SI_i = \frac{\sqrt{\frac{\sum_j E_j^2}{n} - \left(\frac{\sum_j E_j}{n}\right)^2}}{\sum_j E_j}$$

$$= n$$

j

$$= E_j$$

(STB)

(-)

(+)

$$STB = \frac{E-I}{E+I}$$

(ToT)

$$ToT = \frac{UV_E}{UV_I}$$

- 2000 / " - 2000 / - 2000 - USDA " - 2000 - USDA " () - (2003-2000) - 71 70 " - (2003) " - 2002 - " - (2003) " : - () - - (2003) - (2003 - 2001) - (43) (28) - (37) - (2003-2001-2000) - (2002) : " (2001) - " - (2001) - - 2002 - (2002)

- (2003-2002) () -
- (1999) -
- WT/MIN (99)/9 – WT/ACC/JOR/33 -
- (2002) -
- (2002) -
- (2002) -
- (2002) -

<http://www.europa.eu.int> = the EU website provides with comprehensive information about EU, its institutions, policies, general information. It contains many useful pages including:

www.europa.eu.int/comm/external_relations/euromed/index.htm:

comprehensive information about “The Euro - Mediterranean Partnership”.

www.europa.eu.int/comm/trade/miti/devel/ft_eba.htm: provides information about EU common trade policies.

www.europa.eu.int/comm/agriculture/index_en.htm: this link is very useful for details about the agricultural sector in the European Union and the agricultural policies.

www.europa.eu.int/comm/enlargement/intro/index_en.htm: detailed information about European Union enlargement.

http://www.europa.eu.int/comm/external_relations/euromed/free_trade_area.htm: a very important source for information about The Euro-Mediterranean Free-Trade Area.

<http://europa.eu.int/scadplus/leg/en/lvb/l04000.htm>: Common Agricultural Policy with a special emphasis on Agenda 2000.

<http://europa.eu.int/rapid/start/cgi/guesten.ksh>: this a good link for searching the EU Institutions press releases.

http://www.europa.eu.int/comm/agenda2000/index_en.htm: it is the main link about agenda 2000

http://www.europa.eu.int/comm/external_relations/syria/intro/index.htm: this link is an important source about the EU's relations with Syria.

http://www.europa.eu.int/comm/agriculture/external/wto/index_en.htm: this is a page of agricultural links in the website dealing with international trade relations especially WTO.

http://www.europa.eu.int/comm/external_relations/med_ass_agreements.htm: it provides comprehensive information about euromed association agreements.

<http://www.Euractive.com> = this is a useful link for the EU Commission economic news day by day.

<http://www.ers.usda.gov> = the website of United States Department of Agriculture (USDA) provides information about US farm sector, policies, and a wide range of related information. Useful pages within this site includes:

<http://www.ers.usda.gov/briefing/wto/genuraa.htm>: this is a link about the Uruguay round agreement on agriculture.

<http://www.ers.usda.gov/Features/farbill/titles/titlecommodities.htm>: it provides a comparison between the old and the new farm bill.

<http://www.ers.usda.gov/Features/farbill/2002Glossary.htm>: it is another page on farm policy dealing with the glossary of policy terms with a very comprehensive information.

<http://www.ictsd.org/> = the website of the International Center for Trade and Sustainable Development. It provides information about the WTO and related subjects. It has many useful links like:

<http://www.ictsd.org/weekly/03-04-10/story1.htm>: weekly trade news digest

<http://www.ictsd.org/iprsonline/> or <http://www.iprsonline.org>: it is an internet portal on intellectual property rights (TIPRs) and sustainable development.

<http://www.ITA.org> = this website provide a very good information about trade in general including statistics.

<http://www.fao.org> = the website of Food and agriculture Organization includes many useful links as:

<http://apps.fao.org/page/collections> it is the address of FAOSTAT, providing comprehensive statistics about the agricultural sector (production, trade, food, land, irrigation, etc.).

<http://www.wto.org/> = this is the website of the World Trade Organization. It contains all the information needed about WTO and its activities. Some useful pages are the following:

http://www.wto.org/english/trtop_e/agric_e/negoti_mod2stadraft_e.htm this page deals with agricultural negotiations in the WTO.

http://www.wto.org/english/trtop_e/agric_e/agric_e.htm: it is a page presenting agricultural trade statistics in WTO.

http://www.wto.org/english/tratop_e/dda_e/dda_e.htm: it provides all the information about Doha Declaration.

<http://www.iqtissadiya.com> = this is the Syrian magazine “aliqtissadiya” which deals with the economy issues in Syria and the world.

<http://www.syecon.org/announce.php>: this website presents the text of the new Syrian laws.

<http://www.dcc-sy.com/pkg8/index.php> = the website of Damascus Chamber of Commerce with a very important information for any trader about Syrian trade details.

[http:// www.Arableagueonline.org/arableague/index.jsp](http://www.Arableagueonline.org/arableague/index.jsp) = the League of Arab States website. It provides information about the Arab Free Trade Area.

<http://www.oxfordbusinessgroup.com> = this is a UK-based firm specializing in economic and business publishing and consultancy in the emerging markets of the Middle East.

[http:// www.sana.org](http://www.sana.org) = Syrian Arab News Agency website, it is useful to search about news, laws, and articles related to Syria.

<http://www.amad.org/files/index.htm> = Agricultural Market Access Database (AMAD)

<http://www.usitc.gov/tr/DATA1.HTM> = United States International Trade Commission

<http://unstats.un.org/unsd/comtrade/default.aspx> = United Nations (COMTRADE data)