

4-2

2001

-

:

-

-

(2003)

. 2005

-

-

:

-

-

(

-

-

)

-

. 2004

. (EPA -

- EBA)

(CAP)

-

. (%45)

-

. 2013-2007

-

:

) 2001
²¹(. 112.6) . 463.8. (
. 1995-1993 93.5
%48
2001 2000 .2001
-1993 (%5.1+)
. 1995
1-3
1-1-3
1-3 . 2001/1993
2001 . 59.2 1995/1993 . 40
. 53.6 .%6.8
-1996 2001 . 53.4 1995/1993
. (1-3) 2001 1999 1998
2001-1993 1-3
. 112.6 1995-1993 . 93.5
. (1-3) %3.2 2001
1999 1995-1993

11.2 / . 46.5 11.25 2000

⁻²¹

/ . 46

)

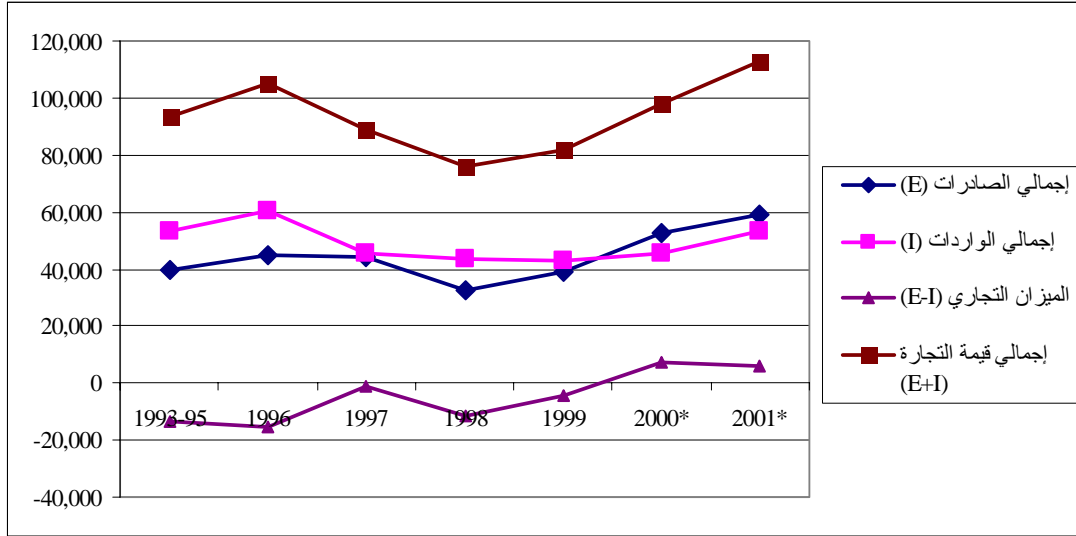
.(**"

2001 2000

(1-3) 2001 5.1+ 1998 14.8-

(.) 2001-1993

1-3



1-3

2-1-3

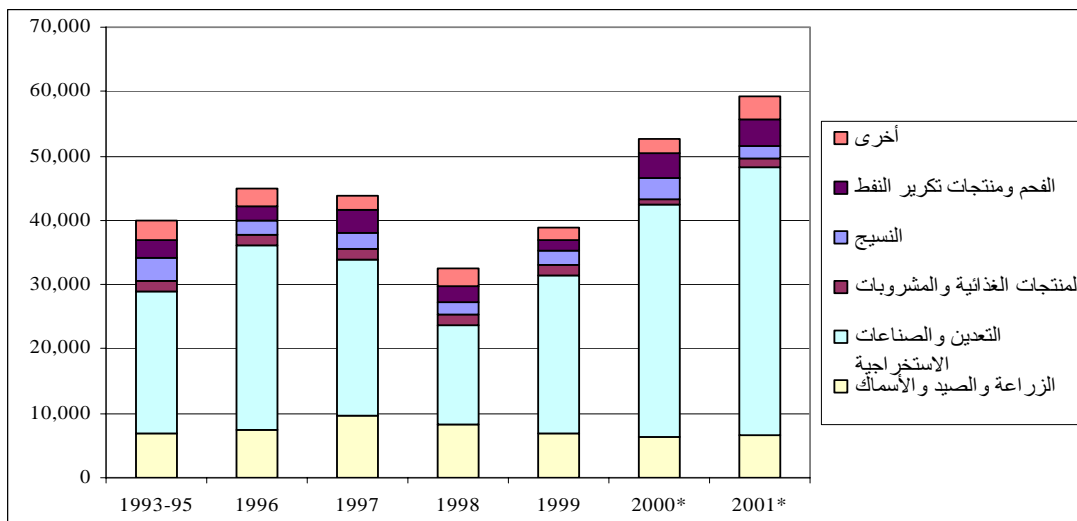
2-3

%70

(2-3) 2000 %68 1995 1993 %55 2001

(.) 2001 - 1995/1993

2-3



2-3

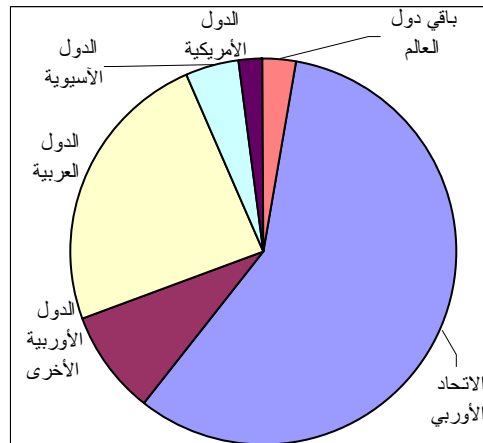
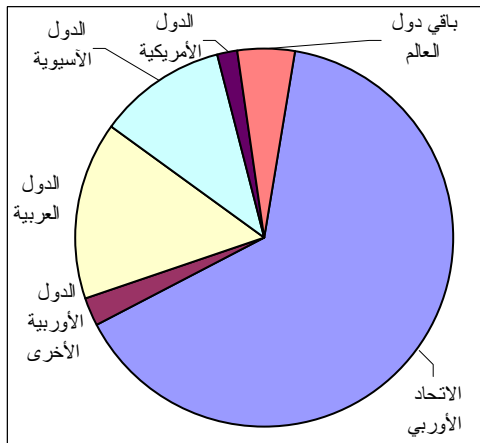
()
 22
 2001 2001
 1995 1993 % 17 % 11.4 2001
) (3-3)
 ()
 (3-3) 2001 %80 2001 1993
 2001 %64
 1995 12 15
 2001 %11 1995-1993 %4
 9

(%)

3-3

2001 -

1995/1993 -



3-3 -

-

:

%81

1995-1993

2001

%81

23

_22

_23

0.22	2.48	1995 - 1993	
0.22	2.41	2000 - 1998	
0.24	2.21	2001	

)

(

. 2.21 2.48

. 0.24 0.22

3-1-3

(4-3) 2001

%70

5-3 .%20

1995-1993 %6.5

. %7.3

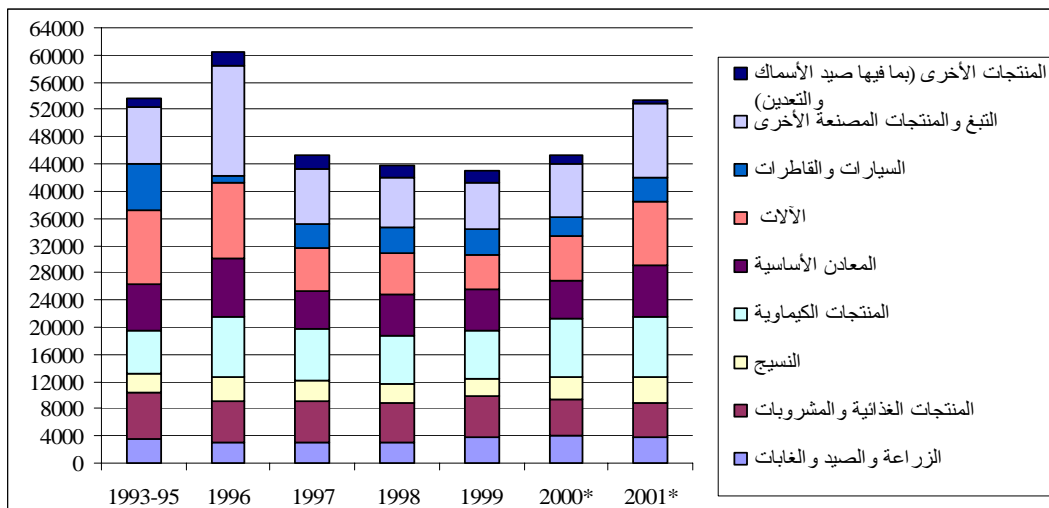
2001

%8.9

2000-1996

(.) 2001 - 1995/1993

4-3



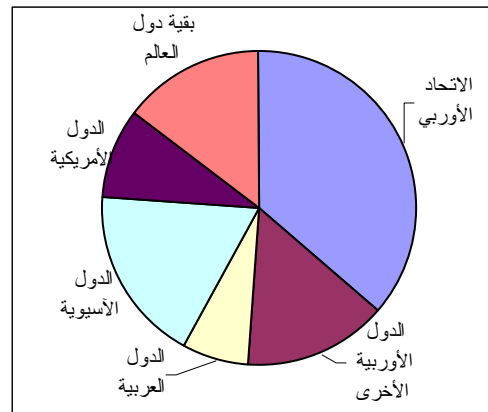
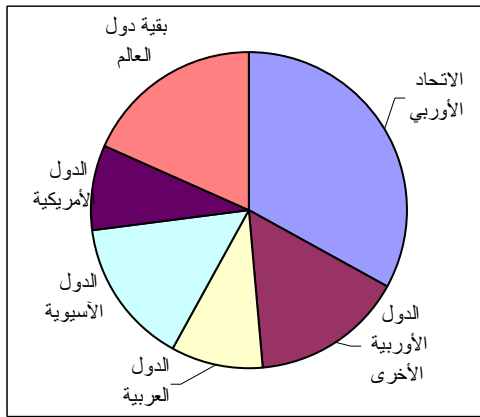
5-3

(5.3)
 . 2001 %33 1995-1993 %36
 . (6-3) 2001 %9.4

(%) 5-3

2001 -

1995/1993 -



6-3 -

(7-3)

%60

(- - -)

. 1995-1993

%50

2001

. (- - -)

:

0.10	4.52	1995-1993
0.08	4.95	2000-1998
0.09	4.86	2001

)

5-4

4.86 4.52

(

2001 1995-1993

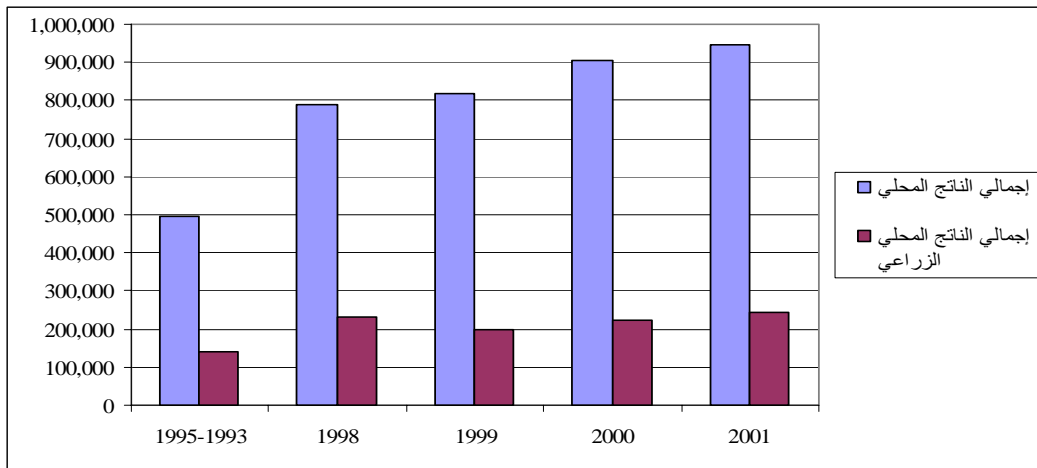
. (2001)

2000-1999

2001 . %0.43 %2.6
 . 2000

1-2-3

140651 2001 1995-1993
 %9.7 25 245318
 . %11.4
 . (6-3 8-3) 2001 %26 (1995-1993) %28.4
) 2001-1995/1993- 6-3



8-3

(*)

_24

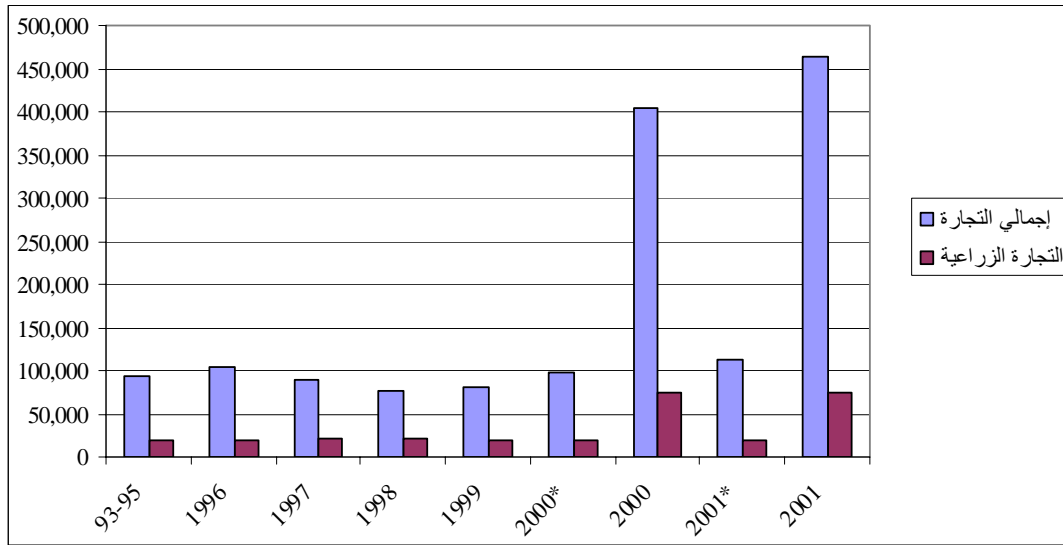
(- () -

2001 2000

_25

18329 . 19350
 (%0.9-)
)
 %20.7 . (9-3) %3.2
 (9-3 7-3) %16.3
 . (8-3 8-3) %24.8 %13.8
 26

(.) 2001-1995/1993- 7-3

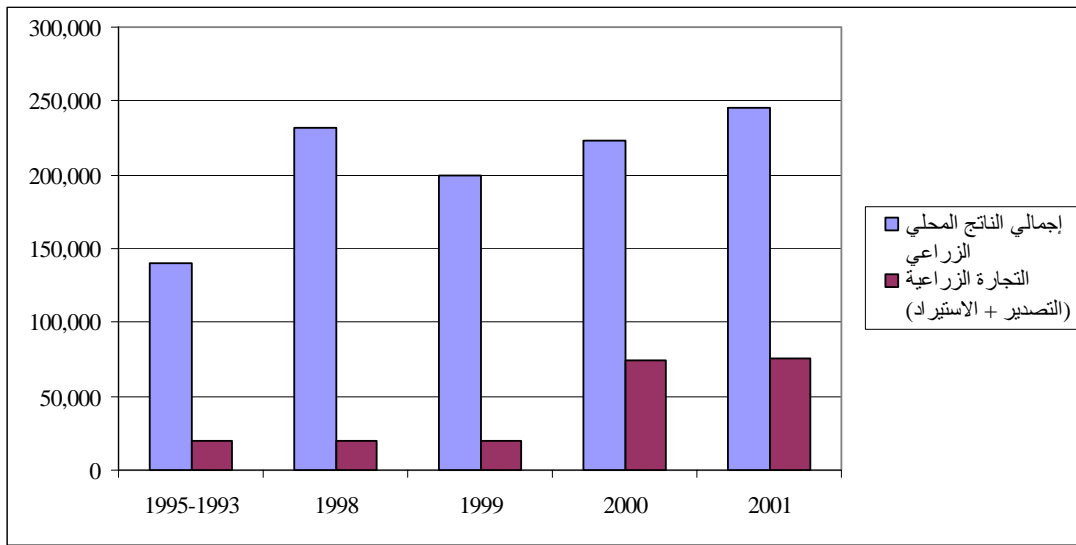


9-3 - :

-1995/1993 -

8-3

(.) 2001



8-3

2001

9-3

1997

2001 1995-1993

. 1999

2.1

2000

1999

1996

1995-1993

) 1997

2.5

2001

1998

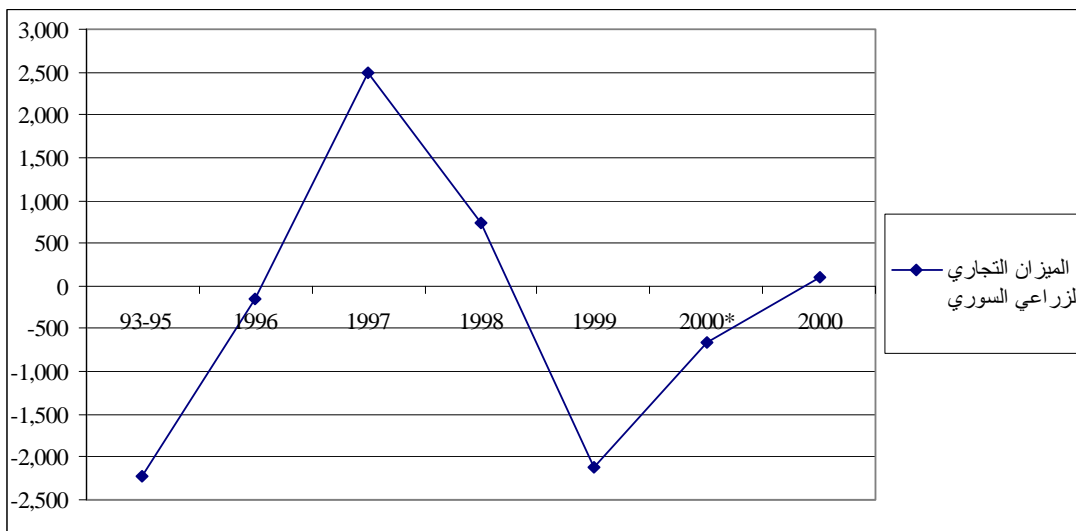
1997

. (9-3

9-3

(.) 2001-1995-1993 -

9-3



9-3

1999 1998

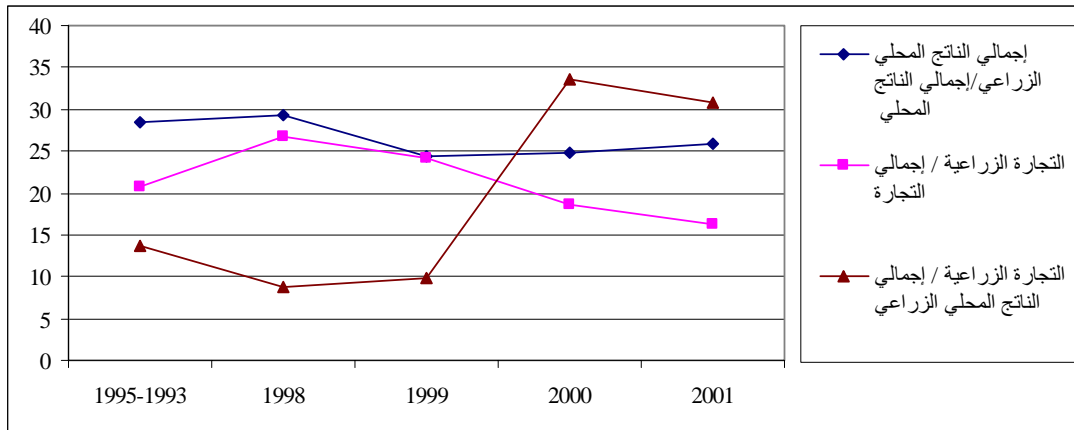
(10-3)

2001 1999

1999

(%) 2001-1995/1993

10-3



8-3 - 2002 -

(25)

2000

1999

1999 1998

2001-2000

1998-1993

(10-3)²⁷

1.4

(

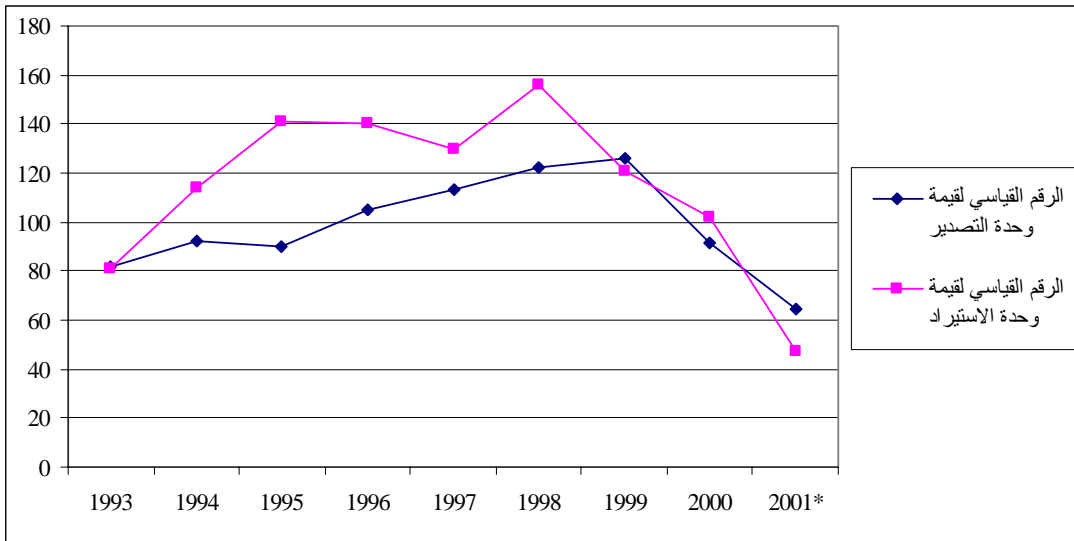
)

12-3

2001

2001-1993

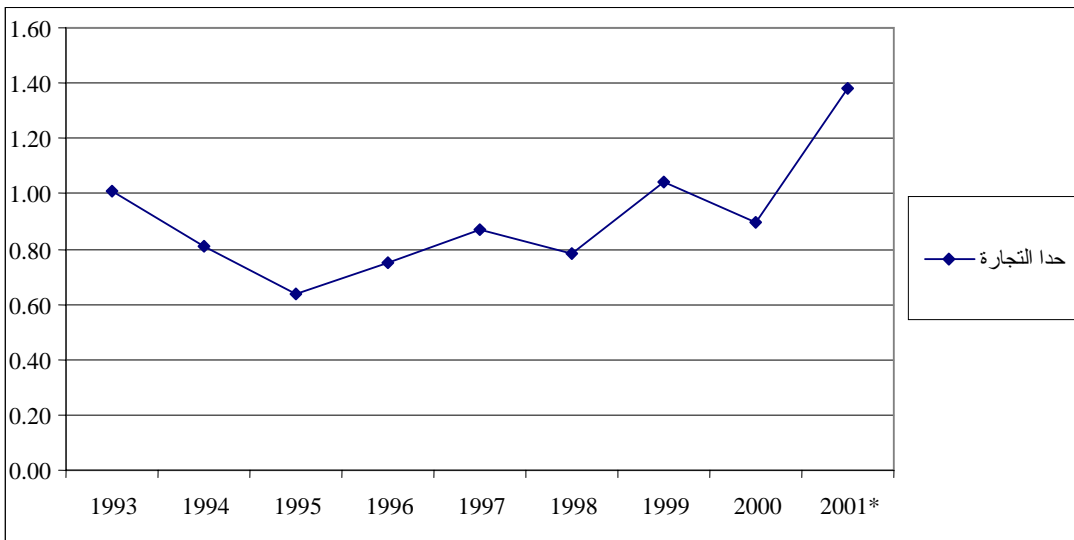
11-3



10-3 - 2001 :

2001-1993

12-3



10-3 - :

2-2-3

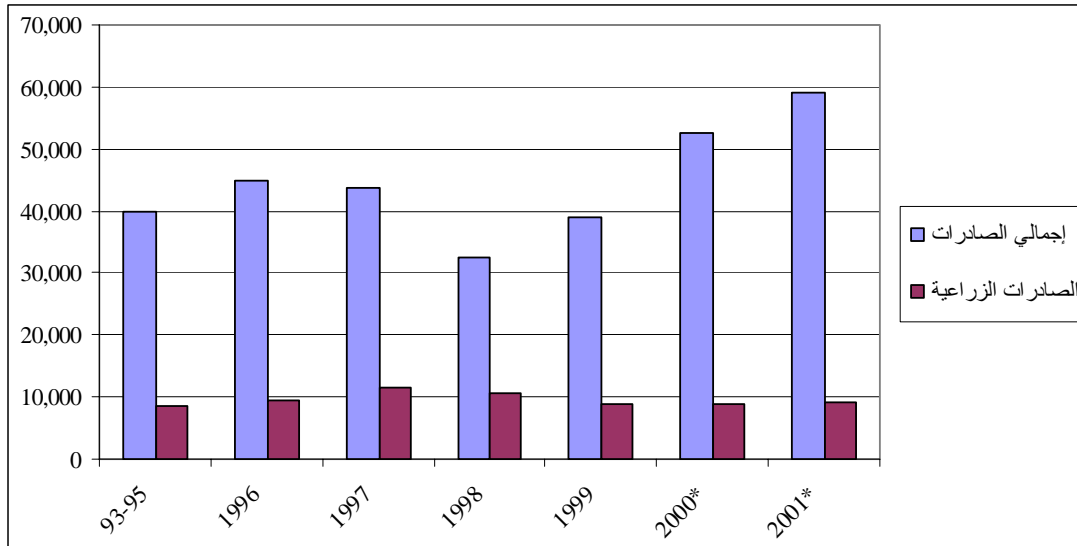
1.2% (9-3)
 . 6.8%
 -3) 1998

. (13

) 2001 1995-1993

13-3

(



9-3 - :

. (9-3) 2001 %16 1998 %32
(2000-1999)

2001 ()²⁸

11-3
(%34.7)

%76.4

95 1 653

%60

12-3

. (

. (%36)

2001-2000

. %32-

%72

13

. 2001-1999

%65 1995-1993

%6.1

. %23.3 %29

2001-1993

28 ()

-²⁸

13-3) %7.8 %9.5

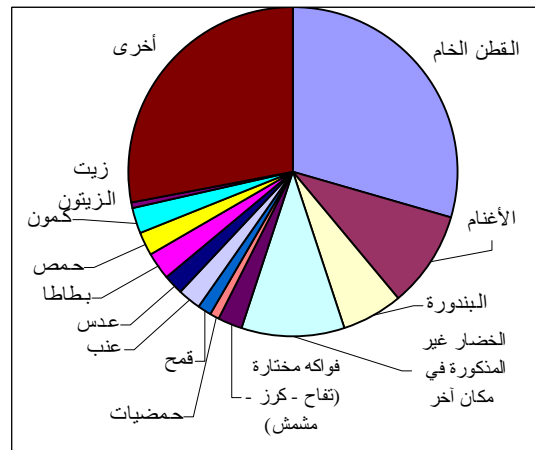
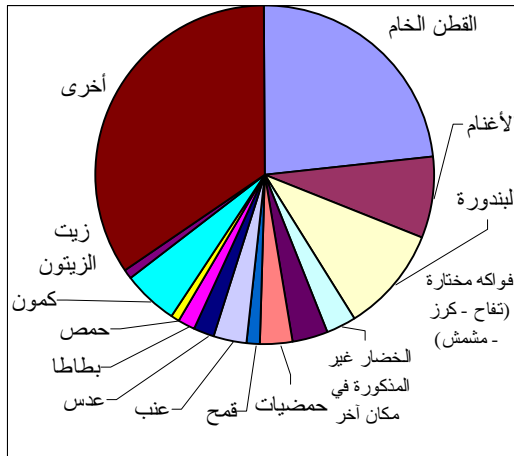
. %10.1

. (14-3

14-3

2001-1999 -

1995-1993 -

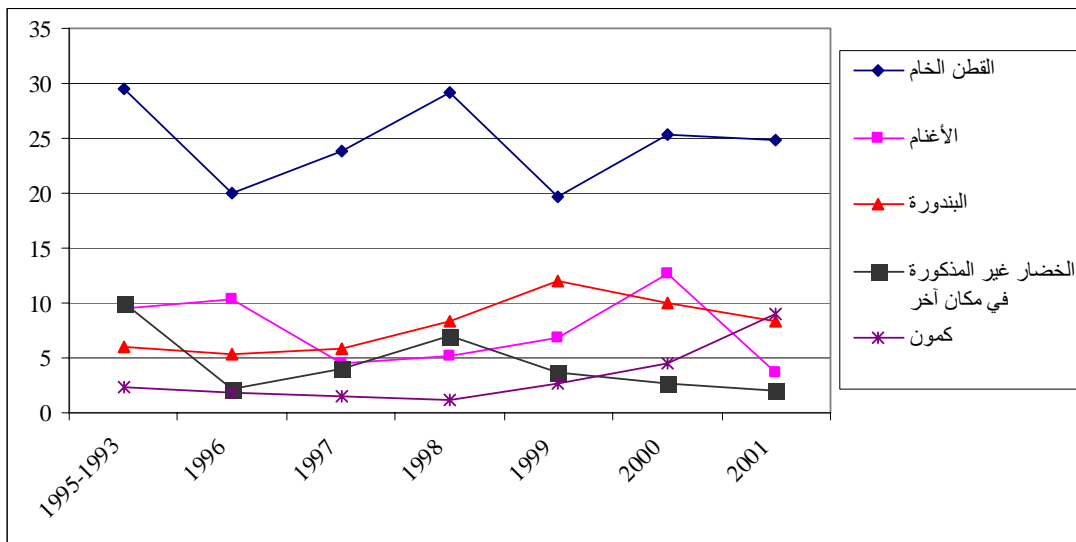


13 -3 -

15-3

(%) 2001 1995-1993

- 15-3



13 -3 -

3-2-3

(RCA)

()

14-3

2001 1993

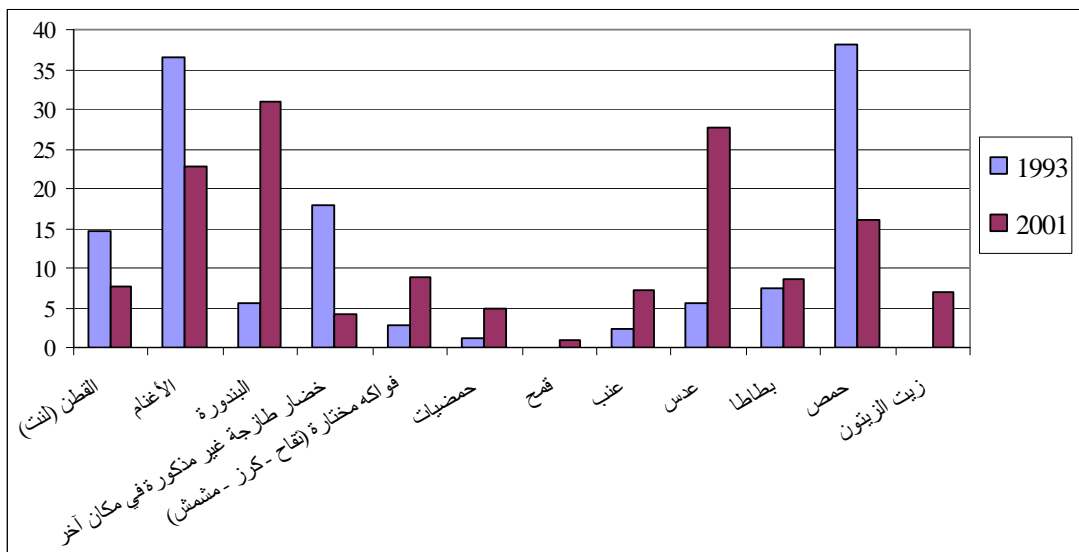
2001-1993

16-3

2001 1999

2001 1993

- 16-3



14-3

(RUV)

)

1

(

()

-

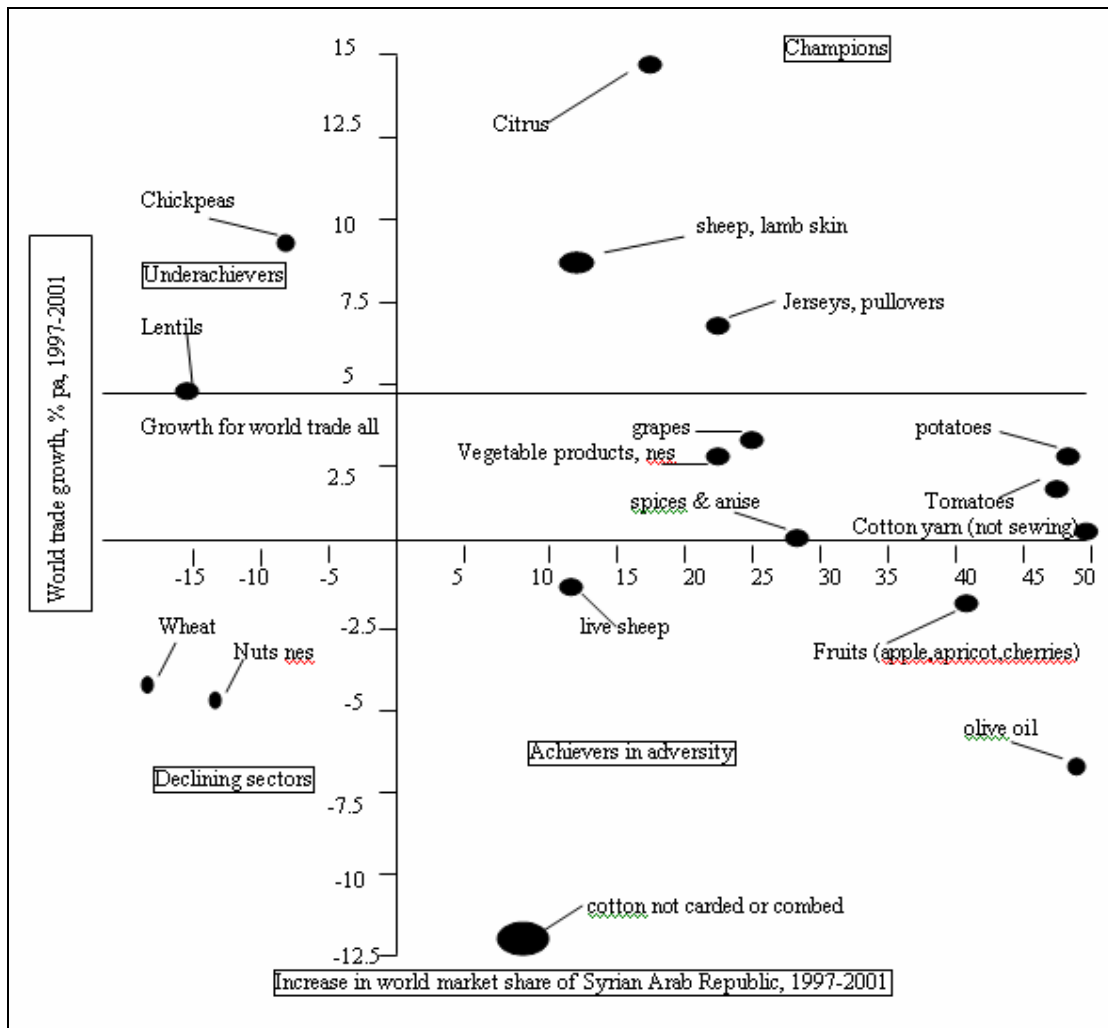
. 2001-1997

. 2001-1997

()

2001-1997

- 18-3



()

()

()

2001-1997

(%1)

.%4.5

()

()

()

²⁹()

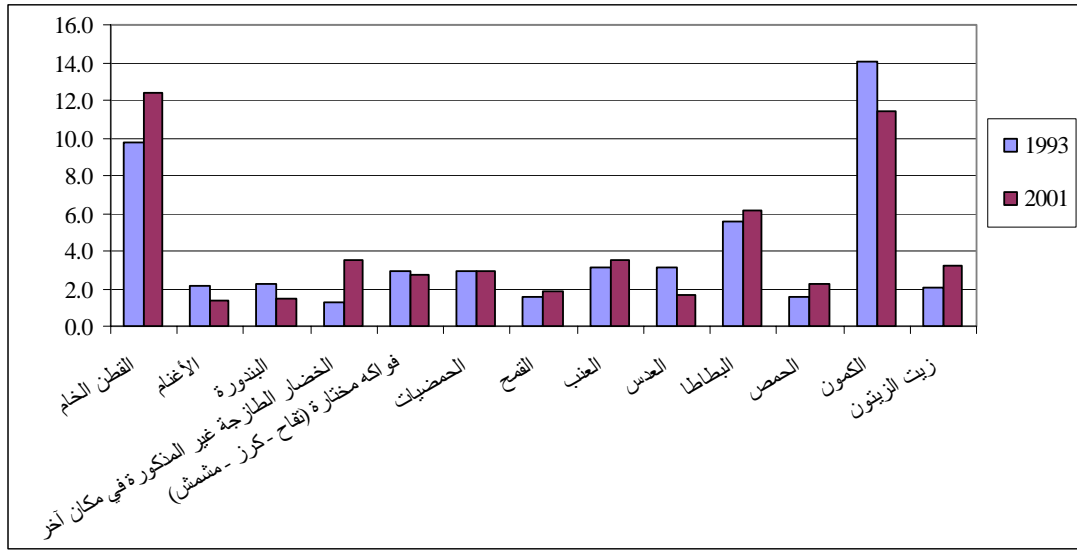
()

2001 1993

(20-3 19-3 29-3)

2001 1993

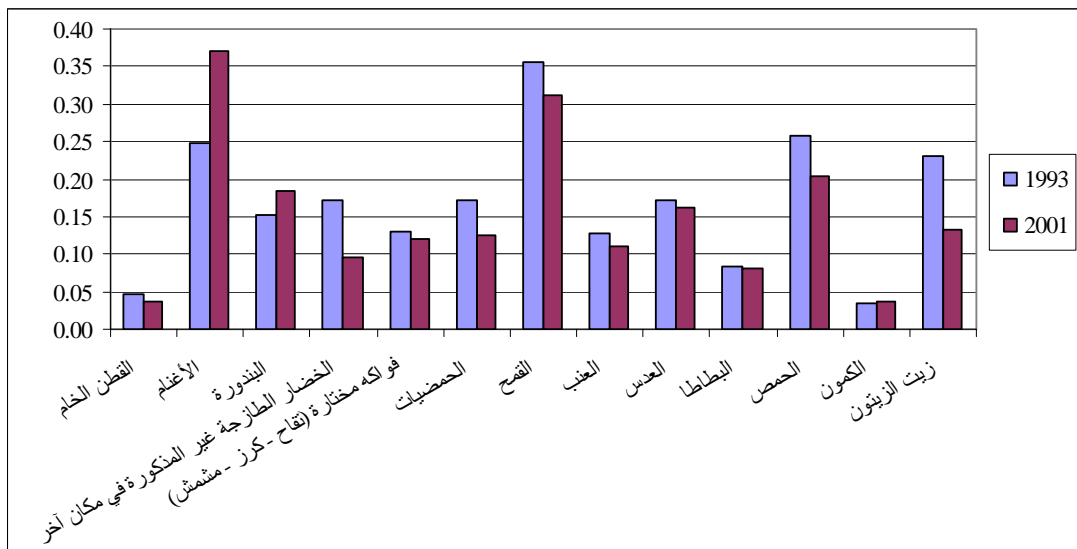
- 19-3



29 - 3

2001 1993

- 20-3



29-3

30

2001-1999

2166

148 444

1995-1993

2084

174011

14600

. 2001-1999 1995-1993 / . 12000 / .
 . (%3) (%7.1) 2001 2000
 -3)
 .(16
 :
 32282) 2001-1999 1995-1993
 21600 . (26395
 2001 / . 26100 / .
 . (17-3)
 :
 77000 1995-1993
 -1999 / . 5800 . 445
 . / . 5400 . 905 167006 2001
 %11 2001 168136
 .
 . (18-3)
 :
 . 737 82000 1995-1993
 . 242 39706 2001-1999
 2001 2000 . (2001-1999) / . 6100 (1995-1993) / . 9000
 . %24 %69
 . (19 3)
 : ()
 27 2001-1999 1995-1993 .
 297 . 182 36
 . (/ . 8200 6800) .
 . %17 2001
 . (20-3) :

			() :
%0.8		1995-1993		5000	.
. %3		2001-1999		40142	.
.		/ . 7100		/ . 11400	.
.2000	2001	(%3)	(%12)		
()
					. (21-3)
					:
			(2000)	
94	25500		1995-1993		.
122		49184			.
1995-1993			. 2001-1999		.
			/ . 2500	/ . 3700	2001-1999
			. 22-3	(% 39.4)	(% 60.5)
					:
10000		168	17000		1995-1993
) 2001-1999					/ .
. %10			(. 271		30199
%3.1) .	281	30475	2001	
2001)	%71.6	%43.7	(
			(%3.1
				. (23-3)	
-1993					:
4200		145	34000		1995
175	25610	2001-1999			/ .
20824	2001		. / . 6800		.
. 2000			%17.8	%27	. 135
	. (24-3)	-	-	-	

. 212 53710 95-1993 :
 . 2001-1999 . 154 31038
 5000 %25 2001 1999 1995 1993
 114 23258 2001 2000 . / .
 %50 . 50 11000 .
) - . (25-3
 :
 2001 2000
 2001 1999 19727 1995 1993 17055
 / . 24700) %106
 2001-1999(
 . (26-3)
 :
 2001 1999 2216 1995 1993 1918
 / . 31000) %7
 . 55 1727 2001 . (2001 1999
 2000 %7.6 %8.1
 . (27-3)
 :
 8000 1995 1993 36000
 () 2001 1999
 8 1066 2001 . 2001 / . 8700
 2000 %85 .
 . (28-3)

2001 1993 () :

		³¹	R.U.V	R.C.A			
-	+		+	-	-	+	
+	-		+	-	-	-	
+	-		+	+	+	+	
-	+		-	-	-	-	
-	=		+	+	+	+	
-	=		+	+	+	+	
-	+		-	+	-	+	
-	+		+	+	+	+	
=	-		+	+	-	+	
=	+		+	+	-	-	
-	+		+	-	-	-	
-	+		+	+	+	+	

& & :

(-) (+) (2001 1993)

RCA

(RUV RCA)

()

4-2-3

(%0.05-)

1995-1993

(9-3) %2.77-

2001-1997

_31

. 2001-1993

2001 1999 %25.5 1996 %16

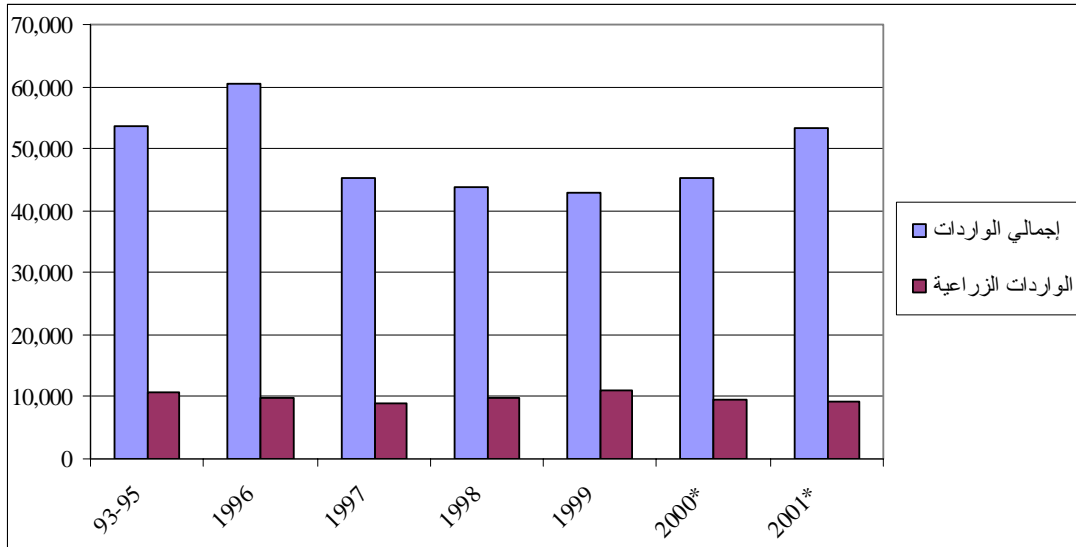
. (21-3)) %17

30-3

%78.6

(.) 2001-1995/1993 -

- 21-3



9 - 3 - :

(. 2.2) 2001

(. 1.7)

. %13 1996

. 1996

31-3

2001 . 2001-1999

2001-1996

%58

2001 2000

14

2001-1999

%63.5

%2 %11

2001-1996

-3) . 2001-1999

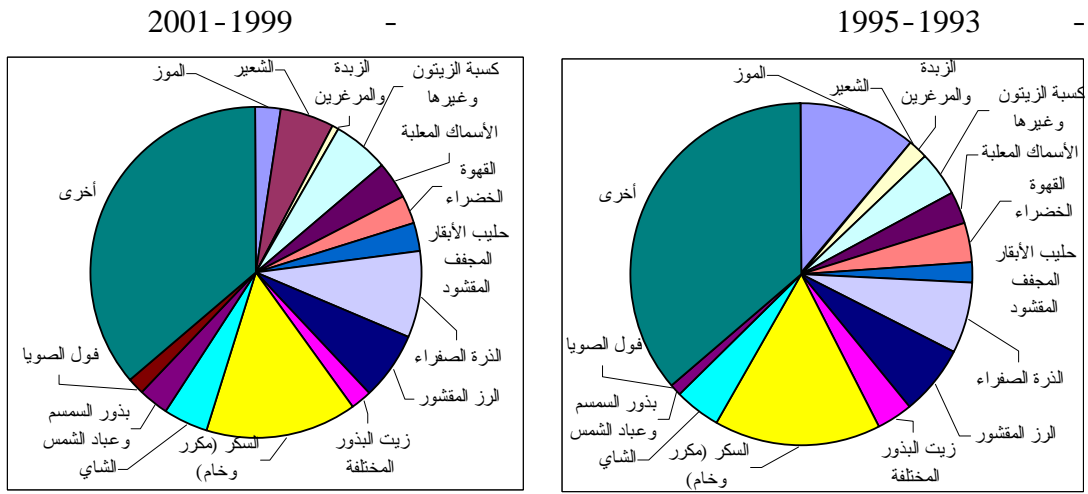
%5

1993

23-3

. (- 22-3 32

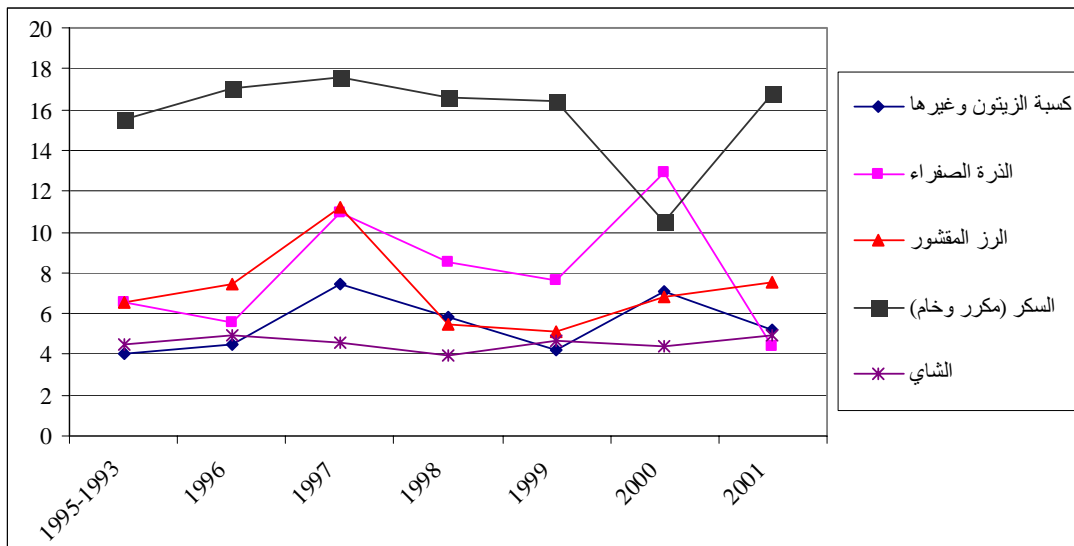
-22-3



32 -3

(%) 2001-1995/1993 -

- 23-3



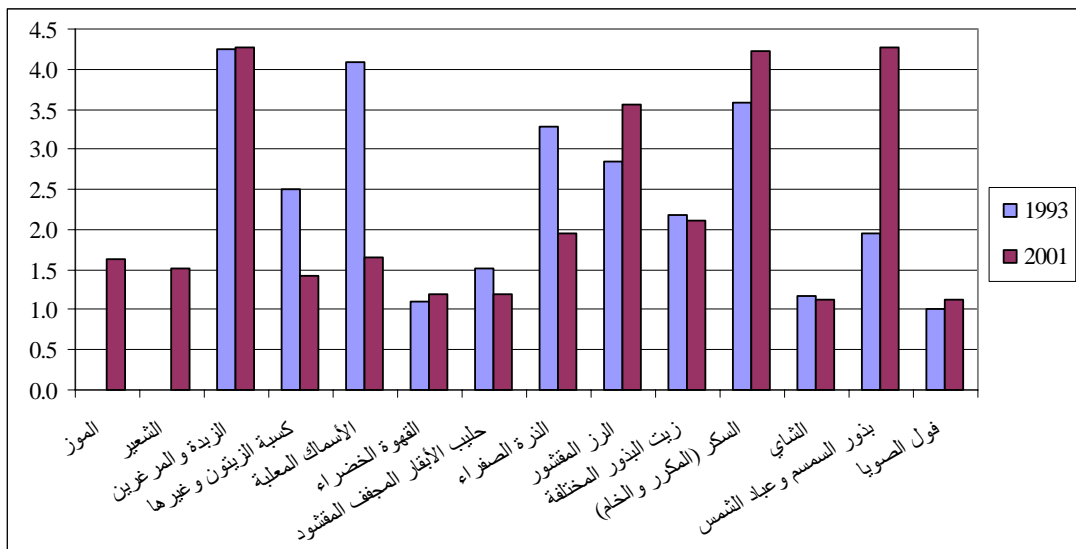
32 -3

25-3 24-3 2001 1993

4 2 2001-1993
 25-3 . (25-3) . 1.7 4

2001 1993

- 24-3



46 - 3

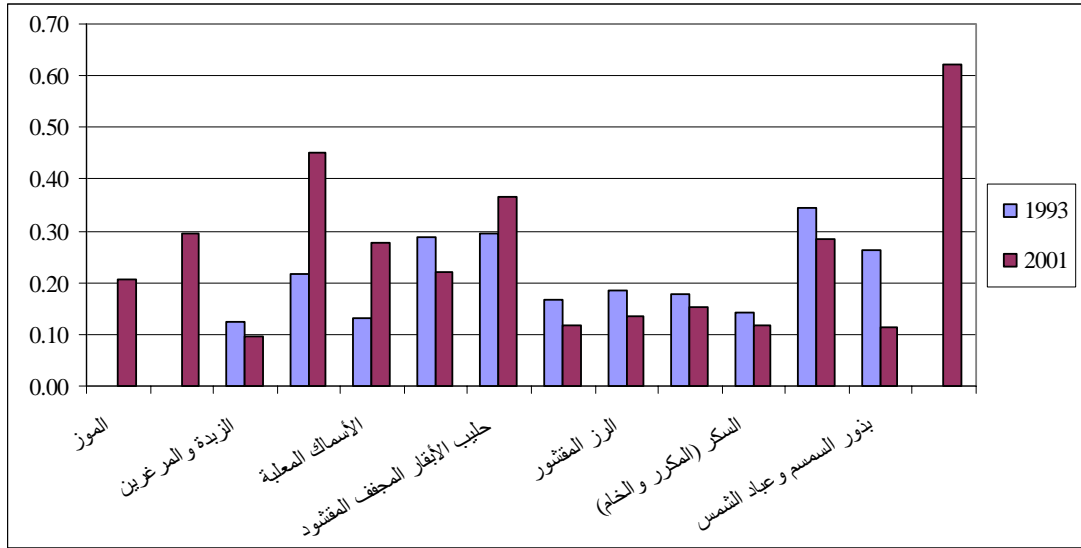
-

:

2001 1993

()

25 - 3



46 - 3

32

: ()

524600 1995-1993 1288 360600
 3600 2001-1999 1441
 1530) 525650 2001 / / 2700 /
 %53.9 %17.7 (.
 . (33-3) - - - -

1994 :
 (2001-1999) 65000
 2001 / / 3800 248
 %10 %7.8 223 63378
 - - () - - 2000
 . (34-3)

%6.5 2001-1999
 4100 546 134000 1995-1993
 176065 2001-1999 / .

2001 . / . 3600 . 631
 %6 %43 . 683 232357
 - - - 2000
 . (35-3) -
 (%8.3 %5) :
 543 . 2001-1993
 (626466) . 820 1995-1995 (354734) .
 2001 . / . 1300 / . 1500 2001-1999
 . 2000 % 65 %69
 . (36-3) 2001
 :
 1999
 . (/ . 1100) . 538 505942
 %64 %41 2001 2000
 . (37-3) - -
 371 20500 :
 2001-1999 . 458 () 1995-1993 .
 / . 21900
 2001 / . 21900 / . 18300
 2000 %9 %15
 %90
 . (38-3)
 :
 7000 1995-1993 .
 . 292 8200 2001-1999 . 180
 2001 . / . 35600 / . 25900
 (. 68)
 %87
 -3) - - -
 . (39

1995-1993 11888 :
 / . 24400 2001-1999 21702
 290 / . 12300
 2001 . . 276 .
 %139 %214 (. 341) 37453
) - - - .
 . (40-3

: (- -)

. 2001-1999 24754 1995-1993 32390
 . 211 . 276
 %40 2001 / . 8500
 - - -
 . (41-3)

:

127000 1995-1993 .
 534) 224888 2001-1999 . 332
 2001 / . 2400 / . 2600 . (.
 %29 %11 . 474 212033
 . 2000

1995-1993
 . (42-3) .

%3.7 :

7643 1995-1993 . 2001-1999 262 2753
 2001-1999 . 369
 9767 2001 / . 48300 / . 95000
 %53 %31 (. 175)
 . (43-3) .

2001-1999 1995-1993 :
 (. 246 . 124) 41321 15206

2001 / 6000 / 8200
 %7.2 316 47976
 () - - 2000 %29
 -3) () - -
 . (44

-1999 . 1995-1993 :
 2001 2000 . 162 62817 2001
 %3.2 %21
 . (45-3) .

5-2-3

2000 48-3
 %27

%22

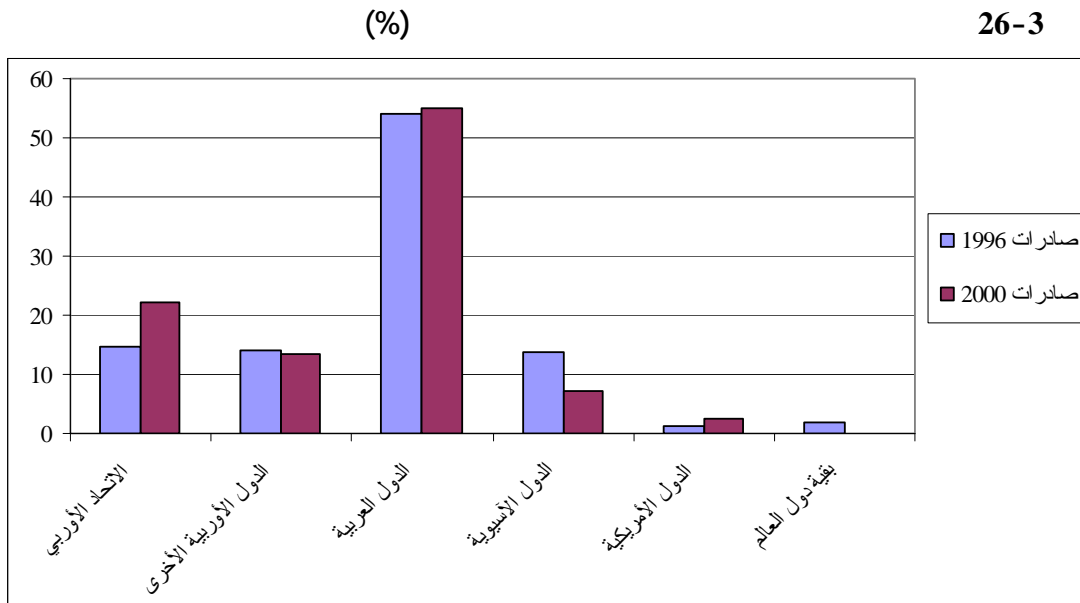
%27

2000

33

:
 - () - -
 -

(47-3)
 (2000-1996)
 2000 %55 1999 %60
 %7 %14 %22 %15
 2000 %2.4 %9
 (26-3)



47-3 - :

: 2000

. 1996

(%17- %0.6-)

. (48-3) (%5 %8)

. %13 %10

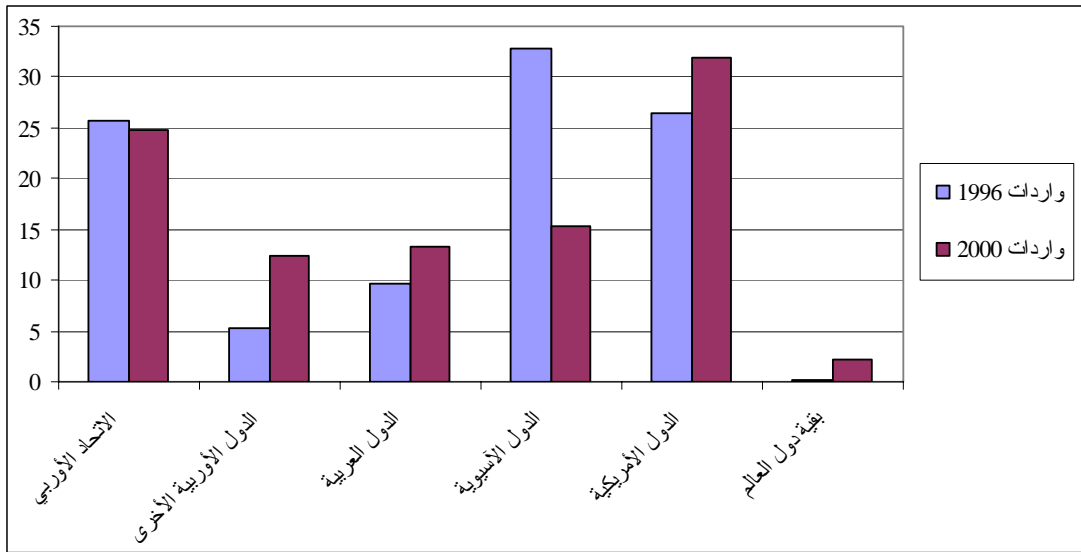
2000 %15 1996 %33

%5

. (27-3) %12

(%)

27-3



47-3

-

:

2000

. (47-3)

. (47-3) 0.6 0.75

-3)

1999

2001-1996

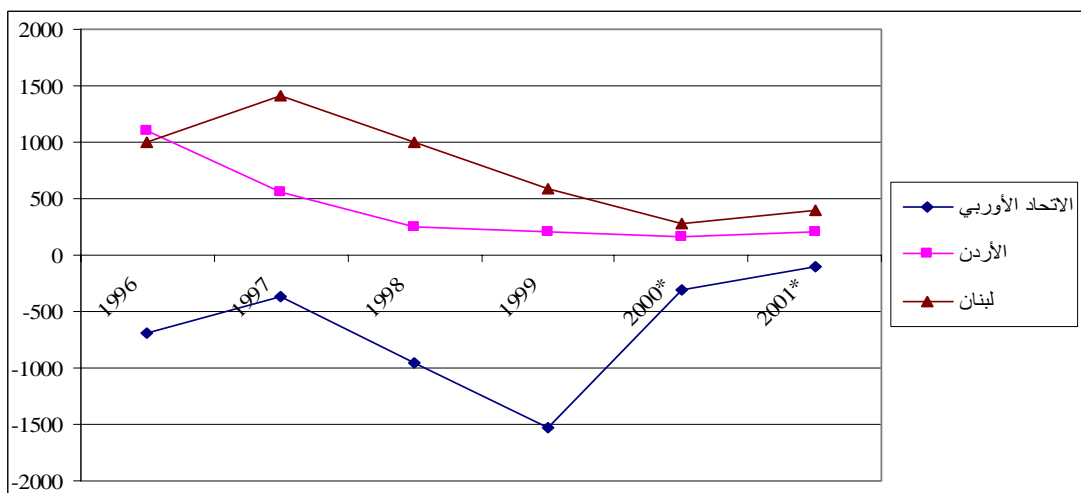
(49-3 (28

(. 1 524-)

. (. 105) 2001

(.)

28-3



49-3

-

GDC

:

(2001) " - "

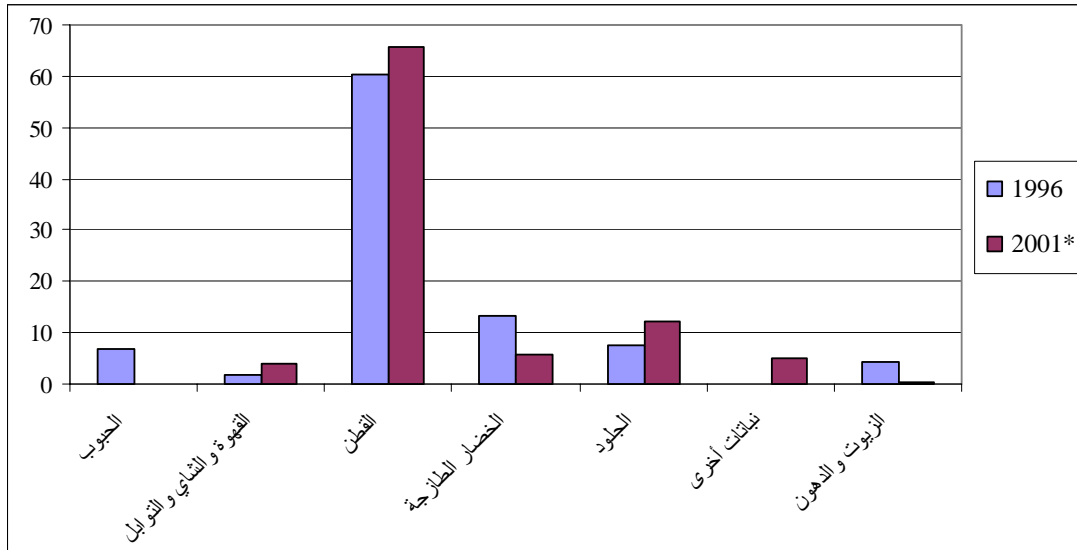
2001-1996 %1
 %19.4 (1.8) . 7.3

) (%57)

50-3) 2001 %86 (. (29-3

³⁴(%)

29-3



50-3

2000 2001

50-3

()

. ()

(%96)

. (%37(

(%55)

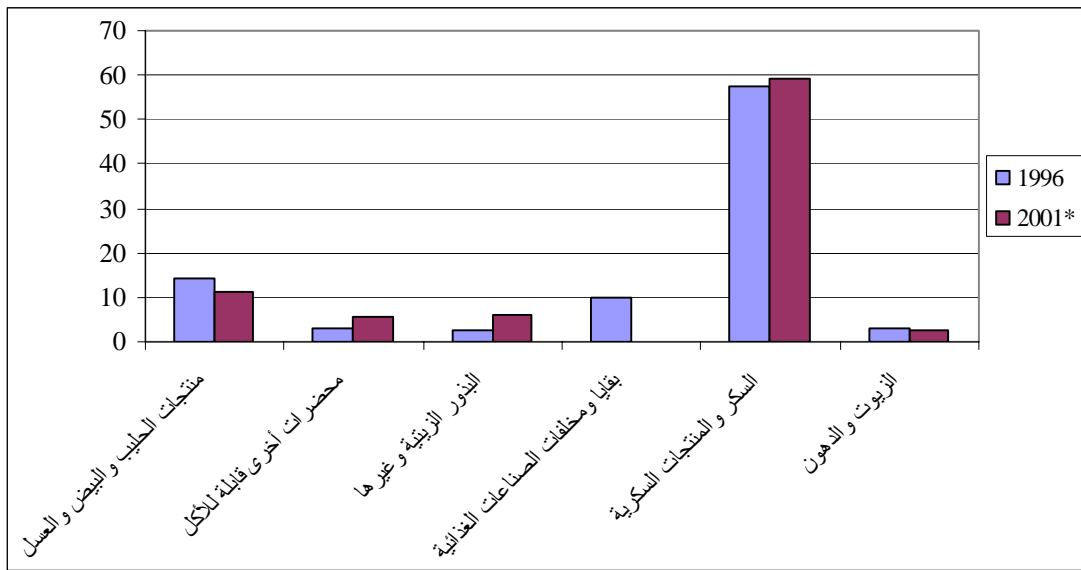
(%53)

(%65)

(%74)

2001-1996 (%4.6-)
 %21 (1.9) 8
 . (51-3)
 . (30-3) (%11) (%59) 2001
 2001
 (%68) (%69) (%75) (%89)
 . (%53) (%65)

(%) 30-3



51-3 -

2001 2000

52-3

206 1996

1.1

. (31-3 49-3) . 2001

%0.4 () . 38 2001

244

%11

%8

%2.6

. 2000

(52-3 53-3)

. 2001

()

%50

2001 .

-3) %6.6

%7.9

2001-1996

. (31

. (%17-)

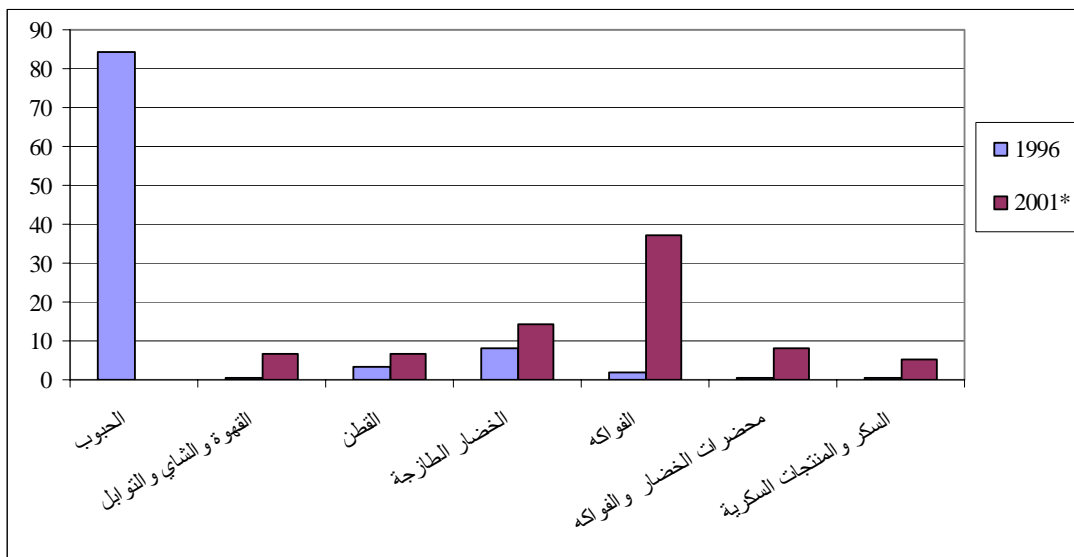
. (%10-)

(%7-)

(%15-)

(%) 2001 1996

31-3



52-3

-

:

2000

52-3

%24

%70

2000

. 2001

2001

%51

%51

(%17)

(%31)

(%59)

. (%16)

53-3) 2001-1996

(

) (.

38

14) %21

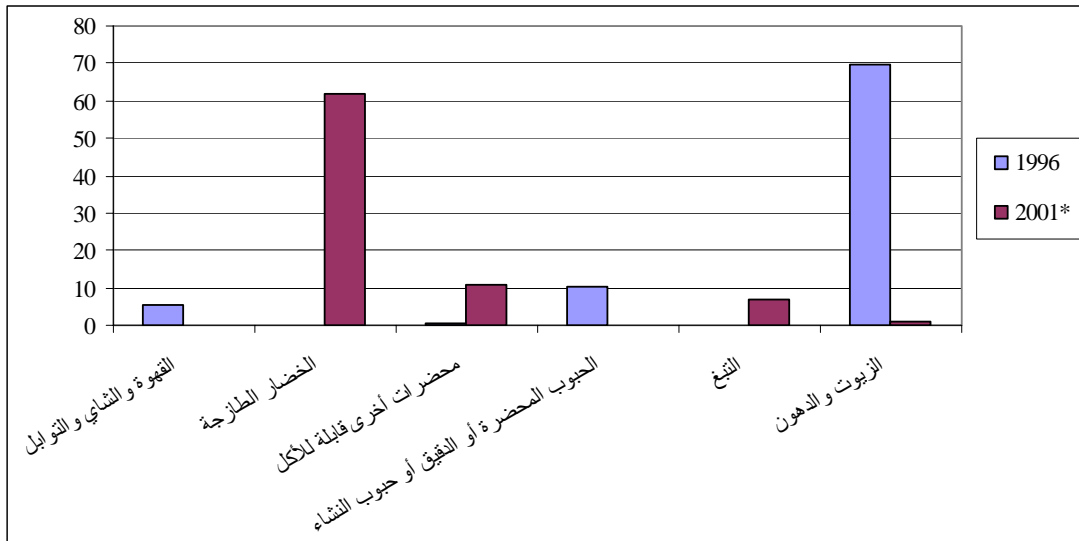
%0.15

. (32-3

.%0.4

(%)

32-3



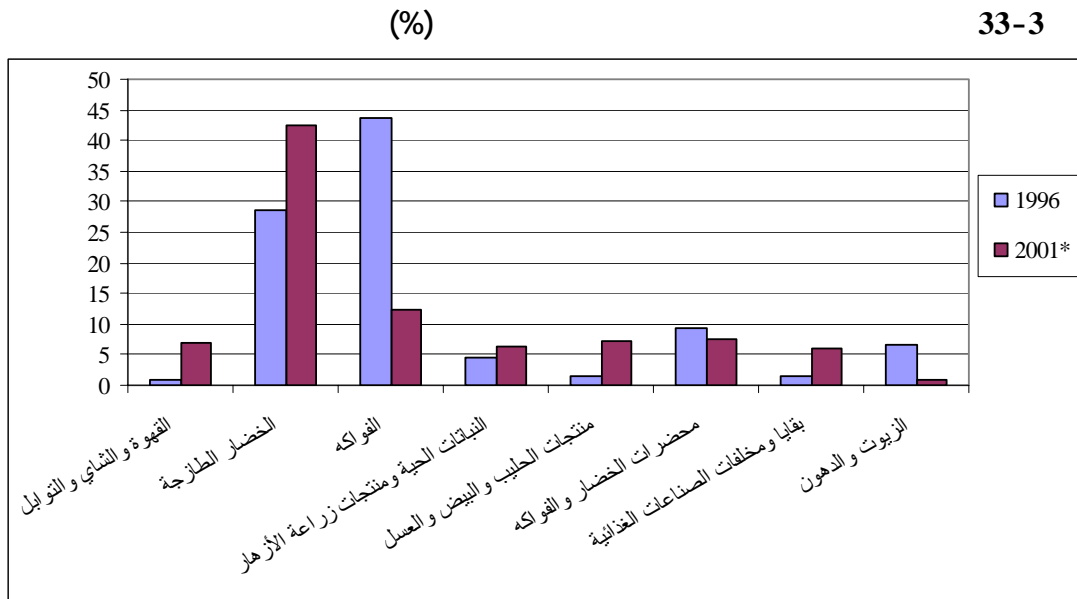
53-3

53-3

(%6) (7) (11)
(%98) (74)
2000 (%65)
2001 %62 . %7-5
%3 %4 %13 2001
(28-3)
. 2001
2000 (. 280) (. 1.4) 1997
(49-3) 2001 . 395
%14 2001 1996
%5.4 %11

-3) .

. (54-3 33



54-3 -

2001

%7

%21

%43

%78

%.7

%45

2001

.2001 2000

54-3

. () %4

(" ")

(" ")

%41

%45

%50

%33

2001

100

%1.1

2001

. 1996

%9

. (55-3)

%0.1

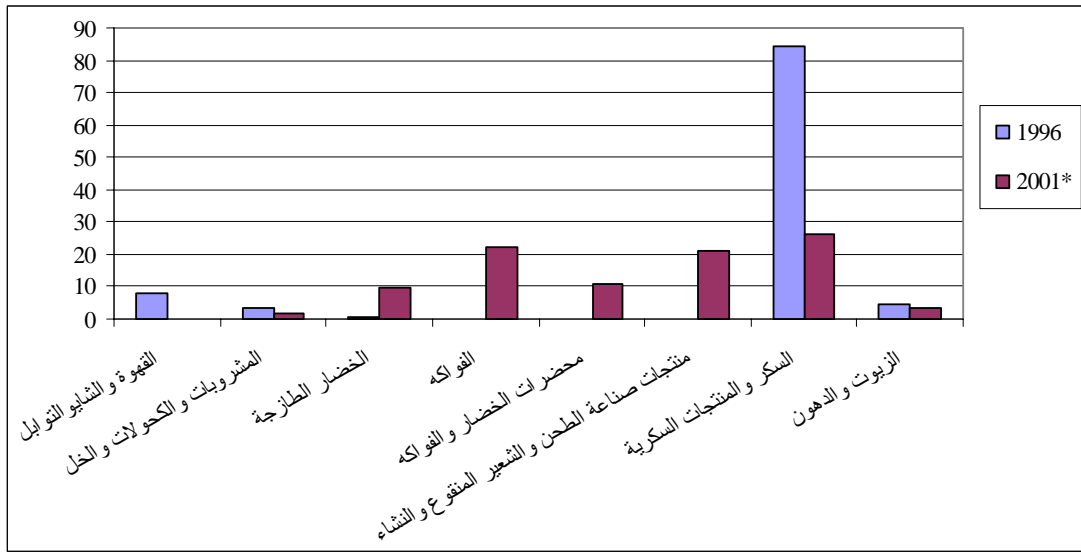
1996

%0.7

34-3

(%)

34-3



55-3

-

:

2000

(%117)

2001

2001

(55-3)

(%6)

(%1)

(%19)

(%32)

:

1-4

1-1-4

2002/3/17 23

:

-

-

-

-

)

(- - -

:

-

-

-

-

2-1-4

2003 /10/5 /69

3-1-4

2003 /3/22 /20

:

-

-

-

-

-

-

4-1-4

2002 28

:

-

. %51

-

. %5

-

1.5

-

-

-

2004

2-4

1 -2-4

(%100)

1184

%10

%90

2002/9/19

2003/7/15 / 1100

:

-

.

-

:

-

()

-

%100

-

-

35

"

"

. /60

:

2004/1/1 3

"

-

"

-

"

"

. 48.50 2004/1/3

"

"

-

. / 48.65

-

"

-

"

"

_35

36

2000

2-2-4

2002 60

2

3-4

_36

1413)

500

(2002/9/24

(

5336

)

2002/11/25

1-3-4

2001/5/9 265

1988

(BTN) 1983

(WCO

:

930 4 1241 97 21

5113

2002

2-4 1-4

2002/9/28 336

:

³⁷(3-4) %150 %1

:

:

) %35-6

³⁸

(3-4

3-4

₋₃₇

₋₃₈

()
(46.5 -23 - 11.25)

39

⁴⁰2002/9/28 /336

48.65 / . 46.5 ()
()
:
(04013010) ()
% 7: -
%13 : -
/ . 11.25 %20=13+7 -
/ . 46.5 -
4.13=11.25/46.5 -
. % 5 = 4.13/20 : (5) (3) -

4.13 / . 46.5
. 23 2.04 / . 11.25

3-4

-39

⁴⁰- يشكل المرسوم رقم 266 تاريخ 9 أيار 2001 إحدى

%1

:

:

1500

16

%1 :

:

%1.5

. /15

%2

%2.5

%3

2-3-4

. (2002/12/12 1515)
:2002/11/14 74 2002/10/9 9
1 1

)

(

2-4

/60							
:	2002	357	2001	1618	1123		1988
.							-
.							-
.							-
.	45						-
.							-
.							-

4-4

41

:

(GAFTA)

1-4-4

%10

1998

2001 /68/

%20

2005

10

45

:

17

35

6-4 5-4 4-4

.2002-2000

1-4

" "

14

16

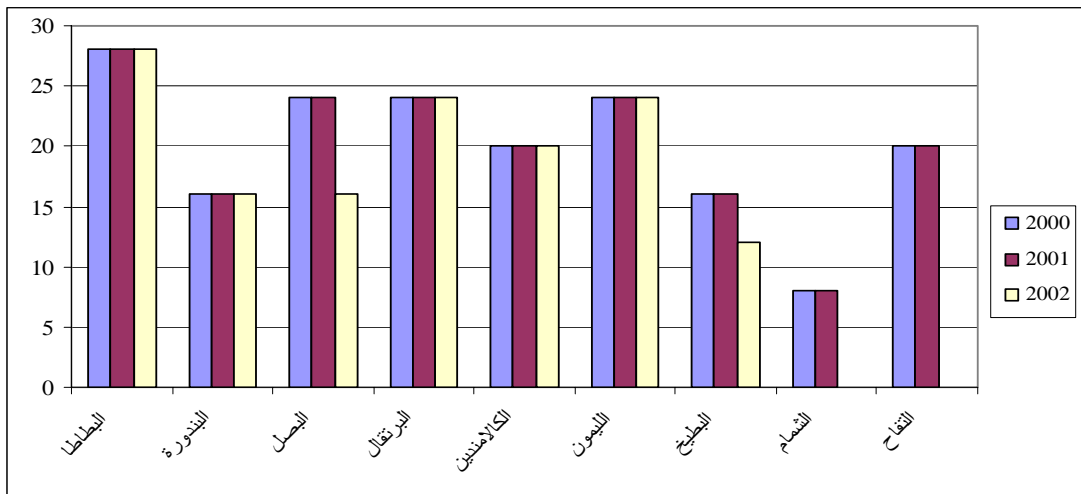
16

24

) 2002-2001-2000

1-4

(



6-4 5-4 4-4 :

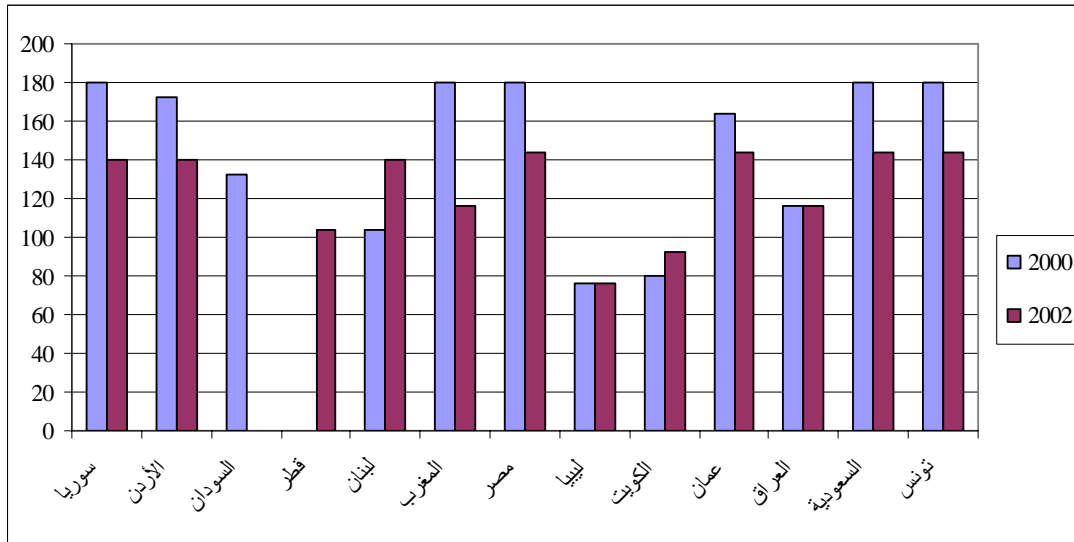
14 16 16 24

. 2002

2002-2000

2-4

()

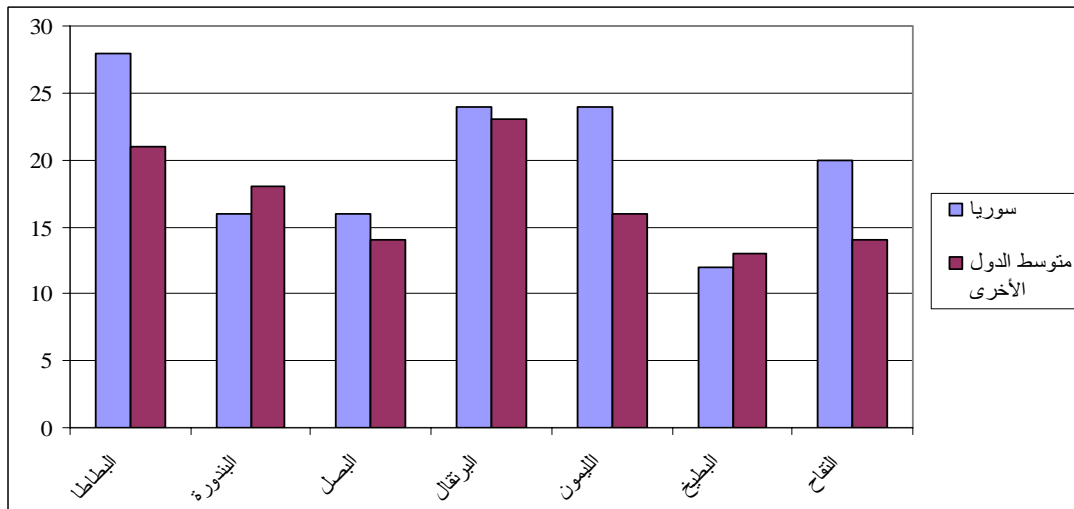


6-4 4-4 :

3-4

3-4

() 2002



6-4 :

5/30	4/ 1	12/31	10/1	2000 :	-
			6/30	5/1	1000 :
		4/30	2/ 1	2000 :	-
			4/30	11/1	3000 :
			4/15	3/1	1000 :
			2/28	1/1	:

		4/30	2/15	4000 :	-
		4/30	3/1	8000 :	-
		6/30	4/15	4000 :	-
			7/1	4/ 1	1000 :
		12/31	10/1	4000 :	-
			5/15	2/10	5000 :
			1/31	8/1	1500 :
			8/30	6/15	1500 :
			7/15	7/1	1000 :
			1/31	9/1	2500 :
			1/31	9/1	:
					:
			9/1	8/1	:

. 2004

(UAE)

4-4-4

2000

%70 2001

%50

2003

%100 2002

5-4-4

. 2001

2003

6-4-4

2001

:

8/31 3/1 : -

: -

2/28 12/1 : -

12/30 10/1 : -

2/28 12/1 : -

5/15 4 /1 : -

3/15 12/1 : -

2/28 12/1 : -

: -

: -

: -

11/31 1/7 : -

9/30 6/1 : () -
:
:
:

7-4-4

1995

27

2010

12

800

40

(2)

7-4

24

7-4

" "



(1)

2

137

%137

1

:

1

" "

:

-1

-

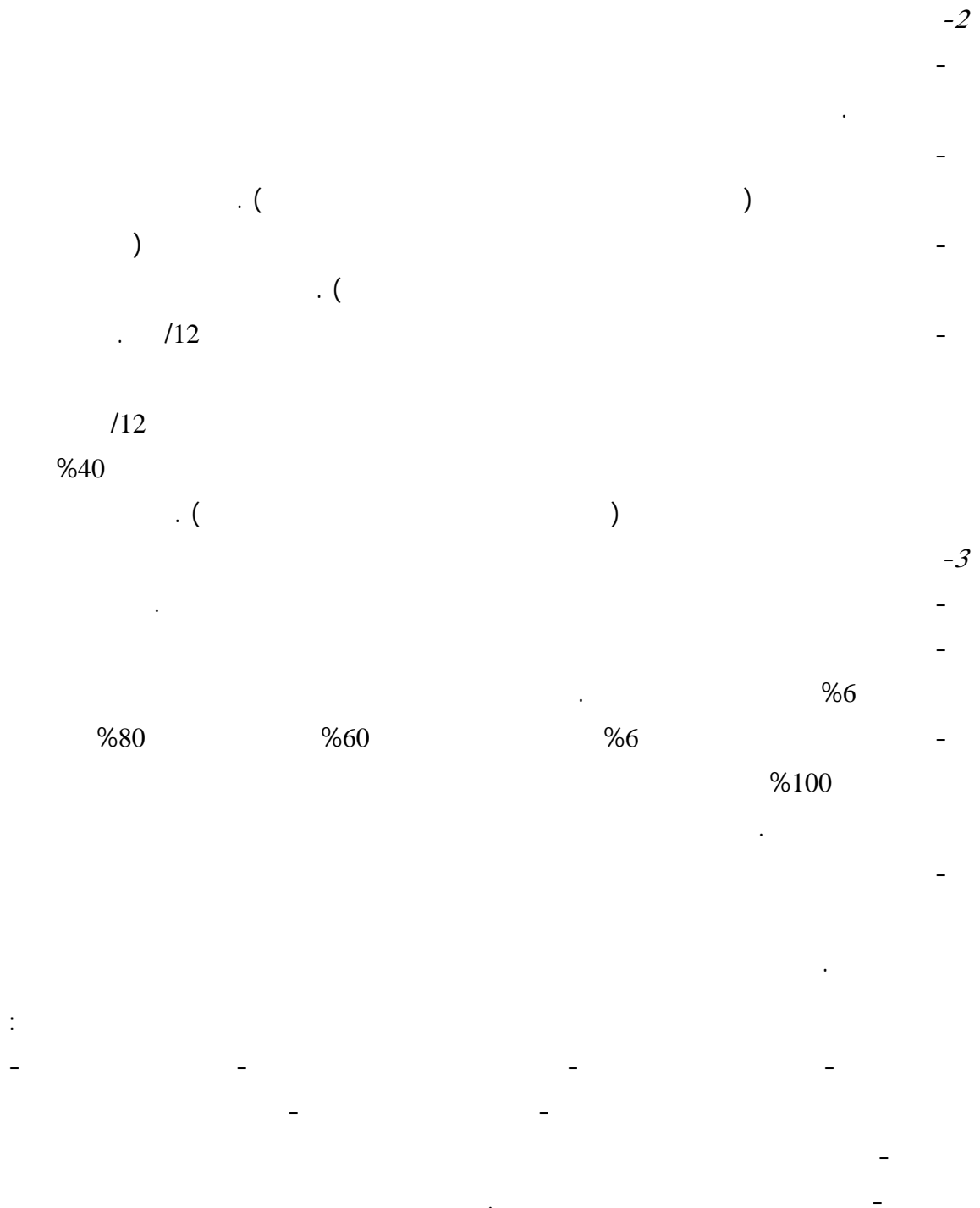
-

-

-

-

. 2015



1948

2001

(5)

5-4

6

)

(

-)

()

2003

2001

-

. 2003