

-

²⁵(OECD)

1-5

2001

OECD

OECD

(1-5)

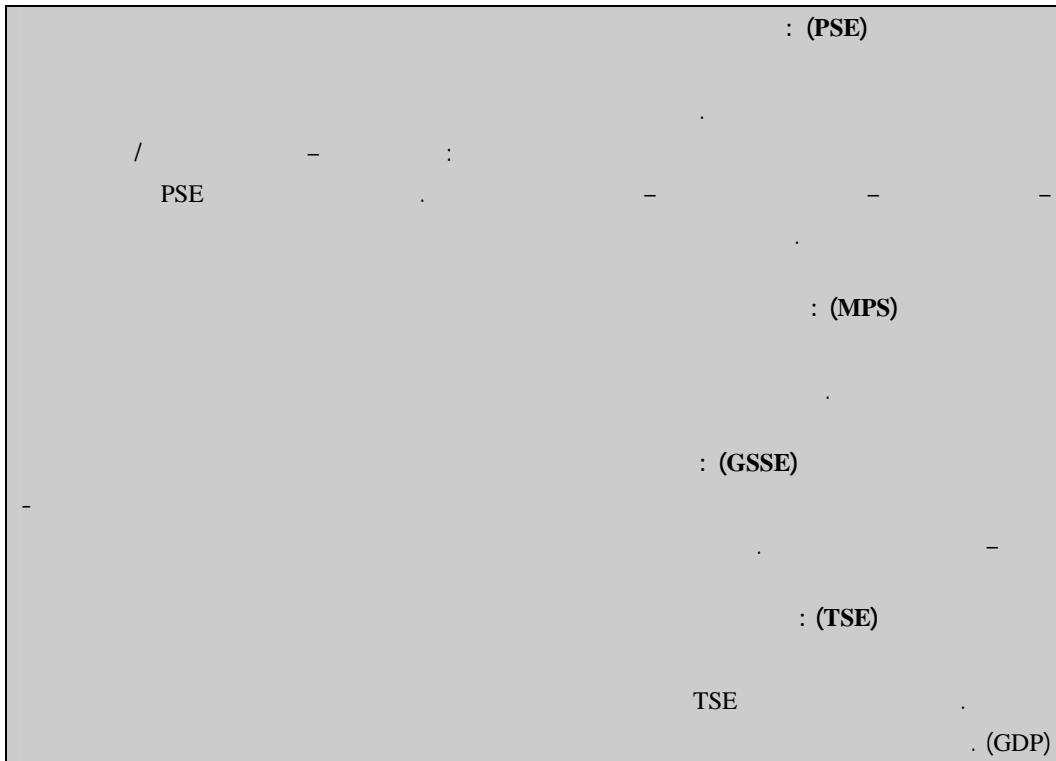
"

_25

"2003

" "

1-5



<http://www.OECD.org/agr/policy>.

(2002) OECD :

2002-2000

2001 2002 : (%PSE) -

. %31

%57 ()

. 2002

. 88-1986

: 2002-2000 -

. %46

. (PSE %17) - (PSE %27)
 - - -)
 %5 1993 (. 2002-2000
 (PSE %18) . (PSE %16) (PSE %17)
 PSE %14 2002-2000 . %6
 : -
 %17 2002-2000
 - - -
 -
 GSSE
 . PSE
 =) : : -
 (+ +
 . 2002 %1.2 318
 %90) (PSE)
 (

()

()

(2-5) OECD

2-5

			()
		^a (1997)	:
		()	
		" (1997) . .	^a
-349	(3) 48	" / ()	. 378

(2002)

2-5

: .
:

: .

2000

2003

2006

2000

(MTR)

)

(

2002

()

2003

2003

(CAP)

26

"

)

:

(2000

)

:

(

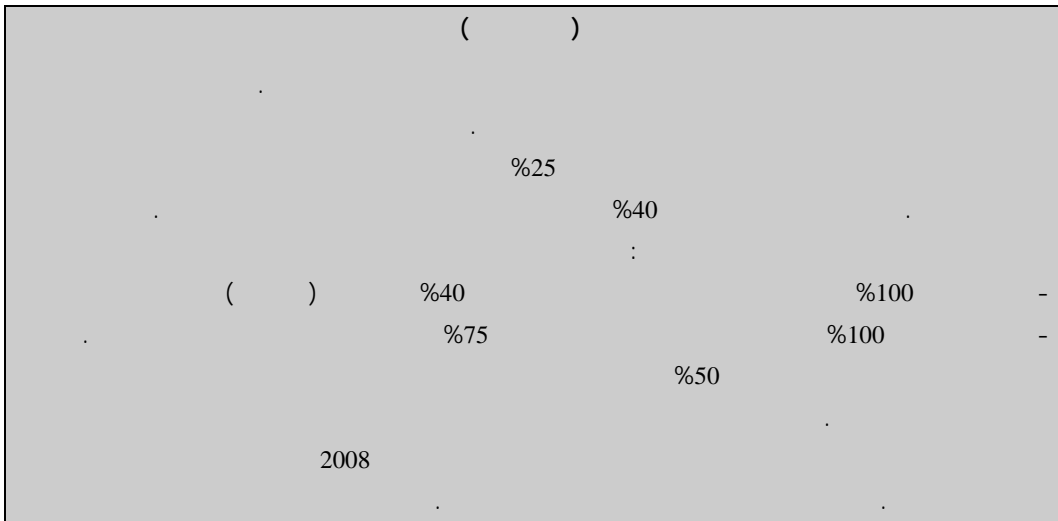
:

(

)

()

3-5



(2003)

:

" "

()

)

2000

()

(

5000

%5

%20

1.2)

(

(MTR)

15000

" "

2000

%10

(2006-2000

1-2-5

-)

(MTR)

(- - -

2003

()

2003

2004

(MTR)

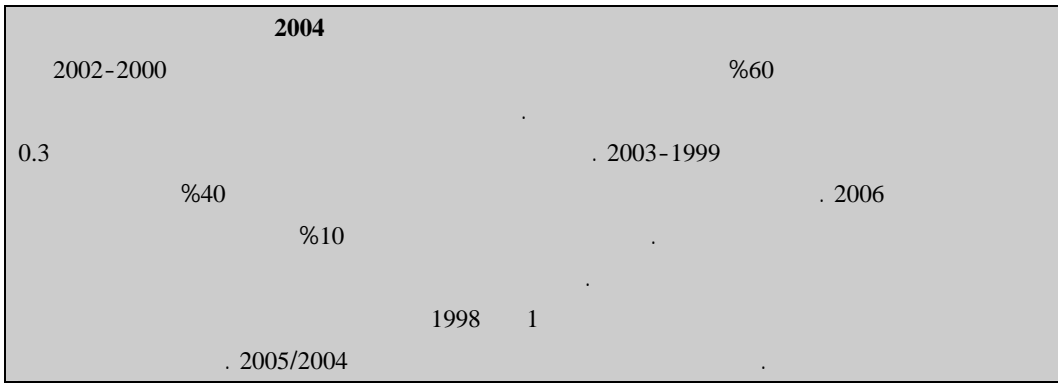
2010

(4-5) %40

%35

%65

2006



www.europa.eu.int :

)

(

674 1.3
2000

- -

. 2003

819

)

. %16

%40

6 5

2005

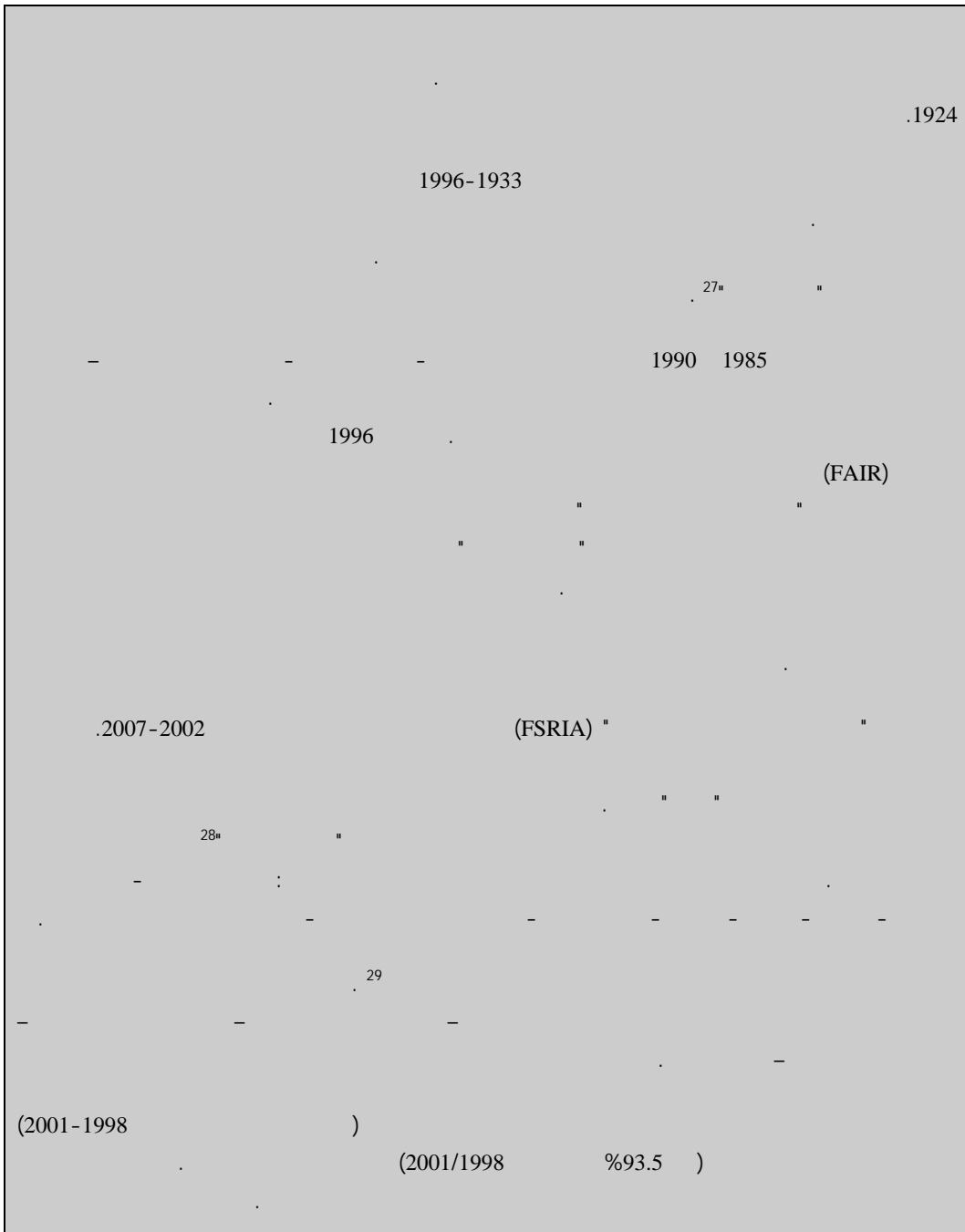
3-5

(FAIR)1996

2001 (FSRI)

. 2007-2002

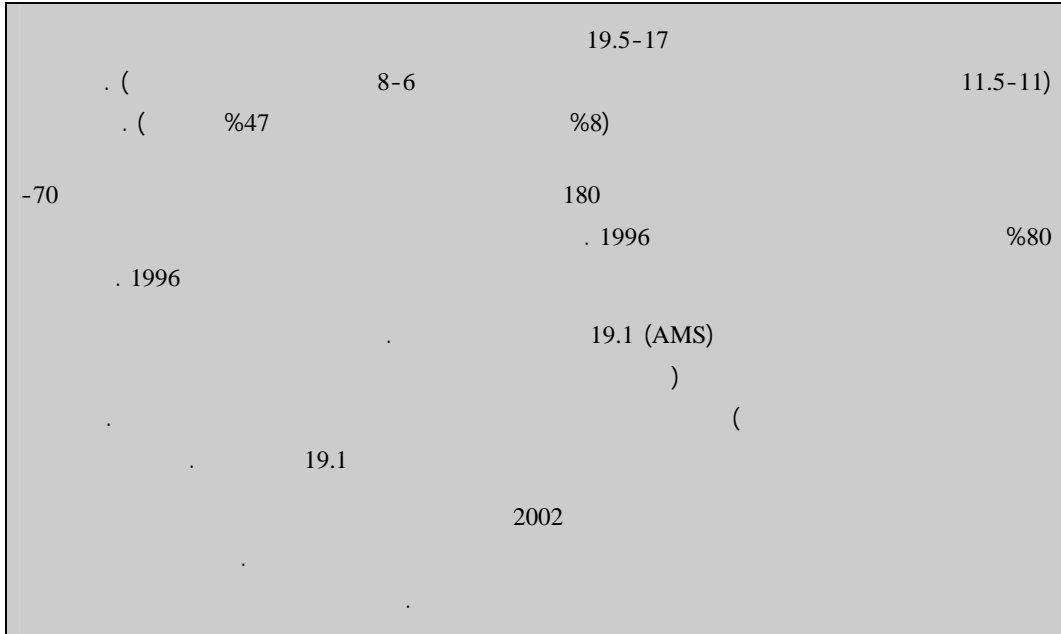
" "



- " " _27

_28

WWW.ERS.USDA.GOV (UDSD)



www.usda.gov

(EEP)

478

(EEP)

2002

30

(- - -)

: 1996

()

- ()

loan rate" non recourse" -

· (" ")

(

(USDA)

(APAC)

(www.apacweb.ag.utk.edu) 2003

:

(LDP " ")

8 . (" ")

(2003) . 2001 2000 7 1999

. (%37) %40 20

2002 1996

2002

2002

()

() 2004 2003

%85

10 2004

(IATP)

()

1

2003

2002

-
-
-
-
-
-
-
-

1-6

2000

2001

1-1-6

2002

(23)

)

(2003

2004

2003

()

2-1-6

23

)

2002 28

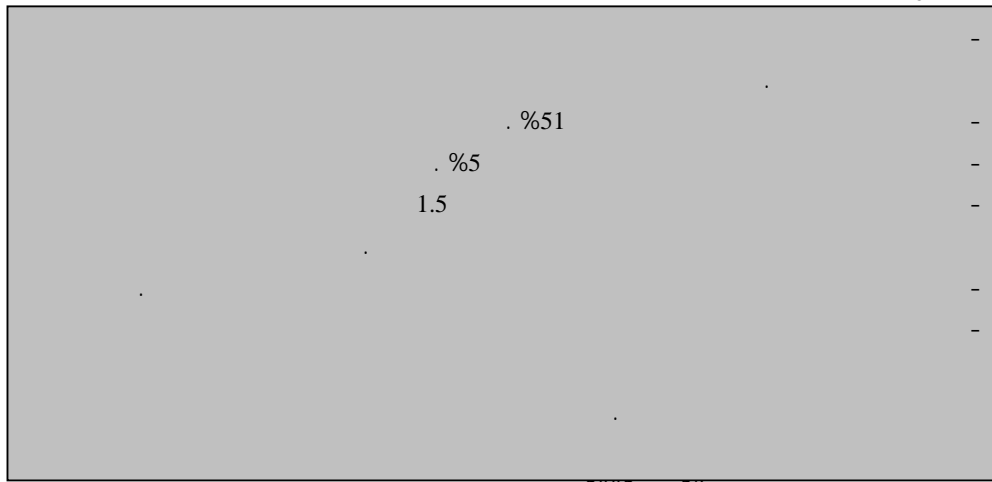
2004

(1-6

2004

%51

1-6



2002 28

3-1-6

2001

(
 2002 / . 50 " "
 . (2003)
 . (CoBS)
)
 2004 . (2-6
 () / . 48.5
 . ()
 2004-2003 / . 53 - 51
 .
 / . 11.25

2-6

	/ . 11.25	/ . 11.20	:
2004	3	48.65	/ . 48.5 :
	46.5	/ . 46	:
	")	-
		.(1-3-4 - "	-
			-
			-
52			:
		2003	/ .
			:
			-
			-
			-
			-
		2000	

2003 :

4-1-6

2003

20

2003

)

2003

(2003

(69

)

5-1-6

1991

10

2000 7

2003

6-1-6

%63

2003 24

) %35 (. 200000

) %10

(. 3000000

3

%10

)

2004

24

(

25

2-6

1-2-6

:

:

•

-1

-2

•

%1

•

%250

•

2001

(2003)

336) 2002

(28

()

³¹()

4-6

)
) ((. (

1-6

102	46.5	27	75	
11.5	11.25	17	30	
1.7	11.25	6	1	
35	23	21	50	
1.7	11.25	6	1	
23.5	23	17	30	
11.5	11.25	17	30	
5	11.25	13	7	
11.5	11.25	17	30	
5	11.25	13	7	
23.5	23	17	30	
50.5	23	27	75	
5	11.25	13	7	
7	11.25	14	15	
5	11.25	13	7	
5	11.25	13	7	
1	11.25	0	1	
5	11.25	13	7	
5	11.25	13	7	
29	46.5	14	15	(-)
1.7	11.25	6	1	

2003 :

. (3-6)

	%1	•
15	%1	•
	. ()	•
	. () %8	•
	:	•
		%1.5 •
		%2 •
		%2.5 •
		%3 •
	2004 61	•
	:	
	. (- - - - -)	%33 •
		%10 •
	()	%5 •
		%2 •
		%10 •
		%10 •
		%2 •
	%10	%35 •
		%5 •
		%4 •
		%5 •
		%5 •
		%5 •

:

-

-

. ()

2002

(7)

2-2-6

32" "

:

2001 3 15 -

()

1-6 -

-

-

. 1998 () o

2001 o

) 2002 o

(2002 672

3-6

1-3-6

()
(2002/12/12 1515 -)

2002
2002
2004 (4-6)
(4-6)

2004

(2004 353)
(2004 309) (2003 1342)³³

4-6

	2002/11/11	74	2002/10/9	9
			:	
	1 -	1		-
				-
				-
				-
	1999			
(319)	2004	

2003 7207)

(

)

2004

2004 8

(

³⁵

(2003)

6-6

5-6

(4)

2002/11/14

74

⁻³⁴

2004/7/1

(1999 28 323)
(4)

⁻³⁵

:

-
-

5-6

/21	1960	237				:1991
	:					-1
						-
%1		()				-
				%2		-
-)						-
		50	15 (- -			-2
	:					-
				. 1952		-
						-
		15				-
	:					-3
						-

			2004		
	/ . 100		2004	14	18
		2004	2	20	
		38			(2004/6/1)

3-3-6

)

(

2-7

1996

. 2004/2003

2004/2003	2-6
. / .	
10,30	
11,30	
7	
16	
17	
17,80	

(/ . 10.30 / . 11.30) 1996

8

1994

2004

2000

: 1996

- . / . 30.75 11/15 ○
- . / . 26.25 11/31-16 ○
- . / . 19.75 ○

60 2002

1991 10

(%15) (%30) (%75) (%59-15)

. (%50-30)

. %1

. 2250 1996
. 25 . 110 %16
2003/2002 %14
2004/2003
150 %14
2005/2004 %10
. 250 %15
. %11
%20
. / . 9 1.5
. / . 20-15

. - - - :

•

.

•

:

■

■

■

•

•

•

: -

³⁷2004

:

. (2001-1999)

1-7

38

(1964)

8

³⁷

(FEMISE)

³⁸

FEMISE

. 2000

12.6

. (2002)

FEMISE "

. (1981)

:

1981

•

1989

•

1998

•

:

-1

-2

-3

-4

2-7

1997

. 1998

1

2002

. 2007

2005

1996

1981

. 2010

:

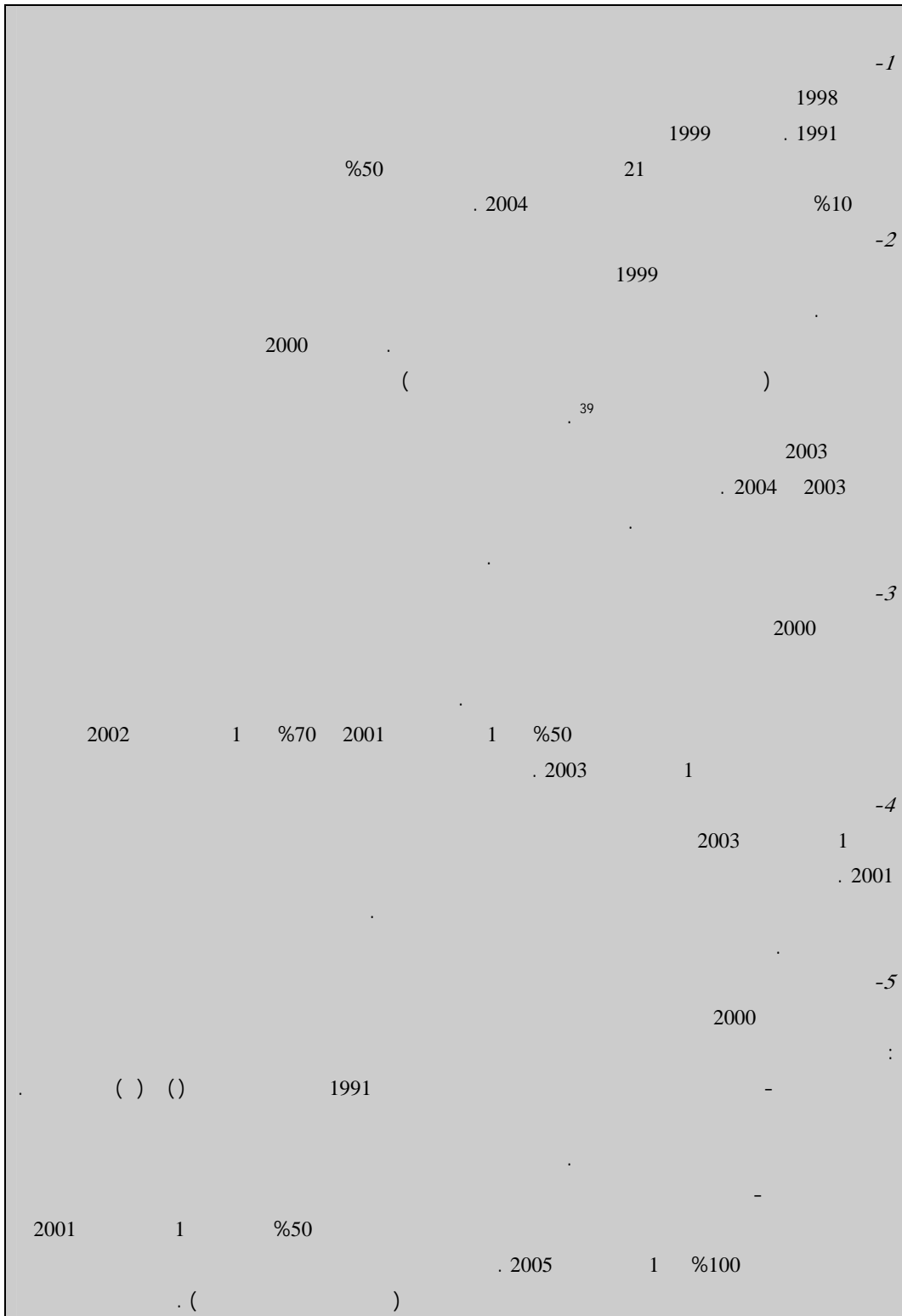
-
-
-
-
-

3-7

1997

. (1-7)

1-7



4-7

1-4-7

2001	1997/1996	1-7	:
		(%0.6)	•
		. (%3.7)	•
	(%3.7)	. (%6.2)	•
(%0.3)	. %1.3	•
%7.4	%1		•
%3.7		. (%4-)	•
	()	. ()	
"	"	. ()	

(2-4-7)
 %1.3 %0.3
 %3.7
 %6.2

(% .)

1-7

	*2001	97/96		*2001	97/96	
2001-97/96			2001-97/96			
3.7	112,615	97,218	0.6	13,209	12,911	
				11.7	13.3	/
-2.7	17,870	19,953	-2.4	5,936	6,545	
				33.2	32.8	/
7.4	59,209	44,420	-1.0	8,487	8,821	
				14.3	19.9	/
-4.0	9,024	10,617	-3.7	4,975	5,789	
				55.1	54.5	/
0.3	53,406	52,798	3.7	4,722	4,089	
				8.8	7.7	/
-1.3	8,846	9,336	6.2	961	756	
				10.9	8.1	/

. 2000

%7.4 %1

. 97-1996

2001

(2-4-7)

(2001 %55)
. (2001 %11 97/1996 %8)

. %40

. 2001

2-4-7

-)
(- -)
(- -)
. () 2001

2001

. (2-7) %65
(%22) (%5) (%31)
(%7)

2001 . (2000-1998)
. (%64) 97/1996 %82
. 45 103 2001

%24 ()

(%)

2-7

*2001	*2000	1999	1998	97-96	
31	32	22	32	29	
2	1	0	1	0	
7	2	0	0	0	
4	4	1	1	6	
3	3	3	2	3	
5	2	1	0	0	
1.4	0.9	0.1	0.0	0.0	
3	0	2	1	1	
3	1	0.4	0.0	4	
2	1	0	0	1	
22	27	29	28	20	
83.4	73	58	65	64	
16.6	27	42	35	36	
100	100	100	100	100	

:

:

. 2001-1998

()
 - - -)
 . (-)
 - - -) (- - -)
 . (- -)
 ()

%59

2001 (3-7) 97-1996 2001-1998
 genus capsicum) 256
 102 (pimento

3-7

(%)

*2001	*2000	1999	1998	97-96	
0	0	0	2	17	
9	3	5	2	1	
13	9	2	4	5	
27	26	33	45	26	
26	23	33	21	24	
7	24	12	12	14	
1	1	2	2	2	
6	5	5	6	5	
83	91	92	88	94	
17	9	8	12	6	
100	100	100	100	100	

5-7

2001

%95

(1-7)

2001 %41 1997-1996 %34

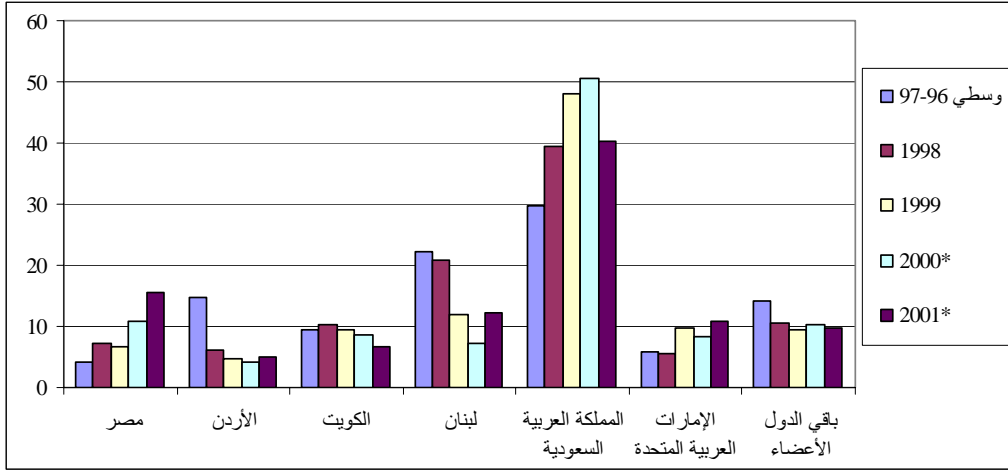
1997-1996 2001

2001 %17 1997-1996 %31

%8 1999 %35

(%) 2001-97/96

2-7



6-7

7-7

()

10

7

8

2005

2001

35

10

%20

2001-2000

116 180)

)

2000

30

1

2001

30 - 1

()

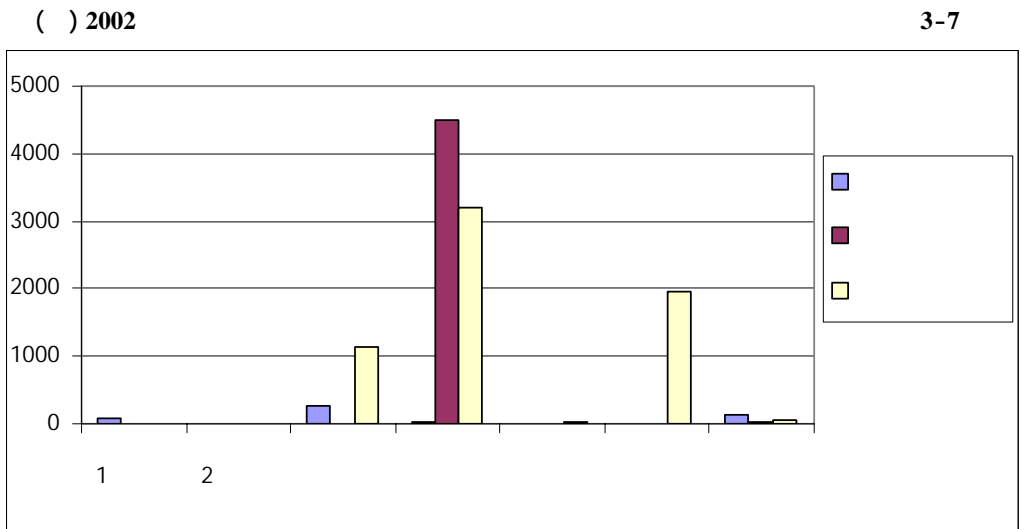
2002

()

1-7-7

2-7-7

)
(
3-7
()



GDC :

3-7-7

()

1997

•

2005

•

•

•

•

•

•

•

•

•

•

