

- : -  
-

(1-3 )

. (3-3 )

(2-3 )

- :  
-

**1-3**

(RCA)

1-1-3

**1-3**

( )

2002 1993

- - - - -

2001

2002

. (1-3 )

2002

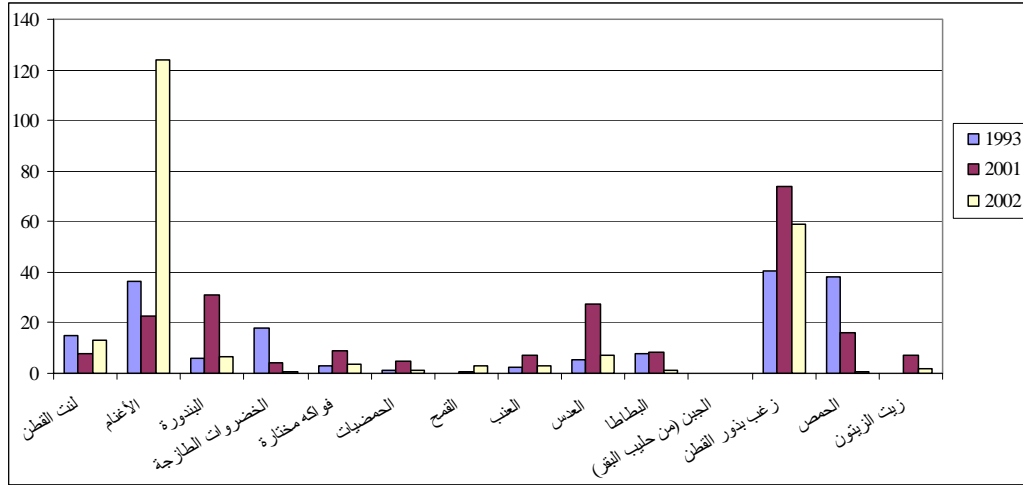
2001

. 2002

. 2002

2002-2001-1993

1-3

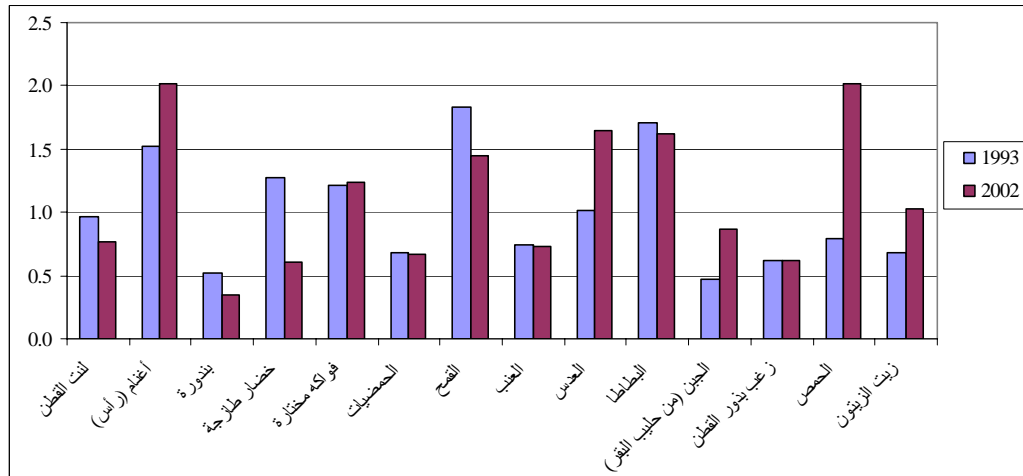


.1-3 - :

)  
1 ( ) . ( )  
( )

2002 1993

2-3



2-3 - :

2002 1993 2-3 2-3

( ) 1 1

. 1 1

1

1

*2-1-3*

-1998

**3 -3**

( )

.2002

. ( )

( )

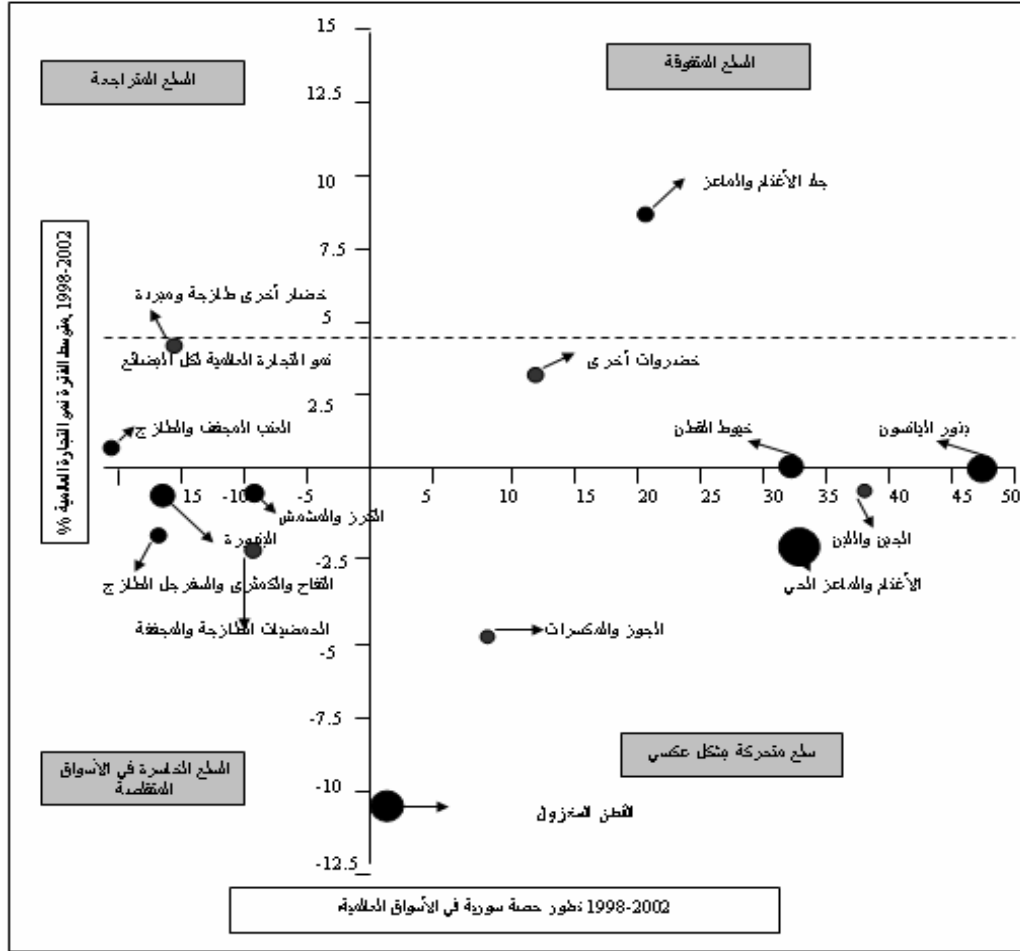
. %4.5

)

(

2002-1998

3-3



( ) :

( ) -

. 2002-1998

. 2002-1998 :

( ) -

( )

- - - - - ) : ( )  
( nes)

( ) -

/

- - - - -  
) - ( ) -  
(  
- -

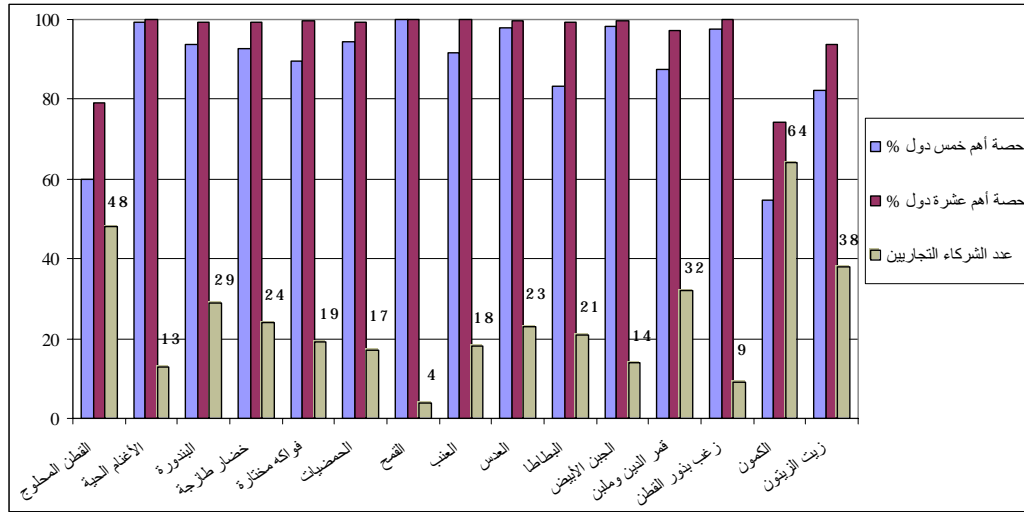
*3-1-3*

( )

(4-3 3-3 ) . %82.4

2002

4-3

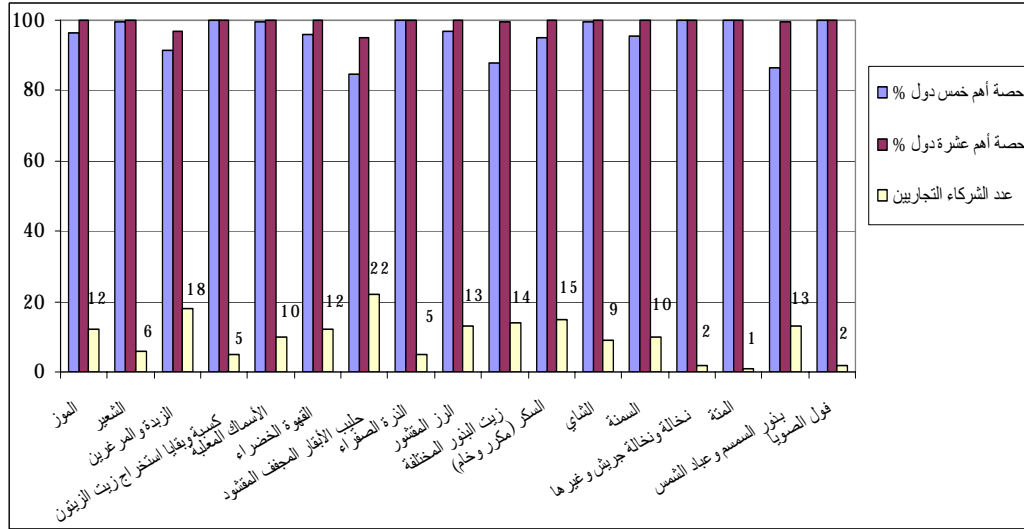


3-3

( 4-3 ) %84.5

2002

5-3



4-3

( 22 )

(5-3 )

3-3-2 2-3-2

2-3

1-2-3

+ : ) " " " " " -  
(

2002

(2002 %190.2 ) (5-3 )  
(%118.4) (%123.4) (129.2) (%146.5)  
( ) . (%114.9) (%117.4)  
2002

(21-3 )

(%21.8) (%17.0) (%4.5) (%1.3)  
(%75.4) (%52.9) (%26.3) (%23.6)  
) . (%63.6)  
(

%110 %90

-3 )

(5

2-2-3

:

( 2002-2000 1995-1993) -1

2002-2000 -2

:

214402	148444	2002-2000	1995-1993
		201	193
2002-2000	1995-1993	/ 938	/ 1303
	9253	254784	2002
-		.2000	%0.8 %12.5
	(6-3 )	-	-

:

4.6 ) . 213

2000 . 2002 (

( 54178	32282 )	2002-2000	1995-1993
	152	62	
	/ 2807	/ 1926	

2000 . (2001 ) 2002

	2001			2001
	15	%81.0		%60.8
				2002
		(7-3)	- - -	
				:
(2004		)		
76779	2002-2000	1995-1993		
	69.3	39.7		189340
2002		/ 366 / 517		
%7.3	%12		2783	218376
			2000	
- -				
			(8-3)	
				:
	2002			
				50000
		68	81776	1995-1993
		18	44917	2002-2000
2002 2000		/ 408 / 837		
	%21.4	%12.5		
(9-3)	--	- - -		
- - -				:
	2002-2000	1995-1993		
	56.160	40.648		
			43	30
	2002 2000	( / 763 / 736 )		
%13.8	%10.7		2287	65093
			2002	
(10-3)	- - -	- - -		

( - - ) :

-1993 5.1 4996 .

20.3 2002-2000 40234 1995

2002-2000 / 505 1995-1993 / 1015

. (%15.4) (%1.3) 2002 2000

- - 2002 %45 2001 20000

. (11-3 ) -

:

1994 .

2002 . 8.4 25611 1995-1993

42 220600 2002-2000

327 2002-2000 1995-1993 .

. 2002 / 188 / 190 /

2002 .

( ) 626.2

5420 2002 2000

. (12-3 ) (%13.4) (%82.4)

15 16786 1995-1993 :

1995-1993 2002-2000 . / 893

. (%15 )

%1.7 ) . 954 28 2002

2002 2000 . (

2001 %19.1 %14.9

- 2002 .

. ( 13-3 ) - -

									: 12
13	34369	1995 -1993							
21649			/	377					
		12.9			2002-2000				
27665	2002		/	595					
		%26.4	%29.7					752	
(2002	%82.0	)						2000	
			(14-3	)	- 13	-	-	-	
%65	%69	2002-2000	1995-1993						:
		19	53770						
						6.7	16796		
	2002	2000	2002-2000		/	399			
249		16162		469		23258			
			%27.2	%16.6					
)	-	-	-	-	-				( 15-3
									:
		2002-2000	30385	1995-1993			17055		
-2000	/	2620)	%146						
			60				(2002		
	6	45839		2002					
		%93.4	%48.5			2000			
-	-	-		2002					
	(16-3	)	-	-	-	-			
									:
2317	1995-1993		1918						
<hr/>									
						276	10503	2002	12
"	"		14-3					-13	

(%6 ) 2002-2000 / 2710

2002 . / 2710

%42.5 %50.7 . 429

%40 2001 %50 ) .2000

. (17-3 ) - - - (2002

:

2002-2000 1995-1993 .

10.4 6.1 35623 13251

. / 293 / 459

%27.1 . 488 44 2002

627.6) 2001 %22.5

(2002 %62.9) . ( .

. (18-3 ) - -

:

. ( )

7.3 7368 2002-2000 1995-1993

9.8 8995

. / 1095 / 988

. 533 11304 %32.4 2002 2000

- 2002 . 2000 %23.7

. ( 19-3 ) - - - -

. ( ) :

. 1.3 1727 1995-1993

( 2000 ) 2002-2000

-2000 . 4.6

( %51.1 %61.5 ) 2002

) . . 328 2619 2002

. (20-3 ) (

3-2-3

: ( )

521226 1995-1993 ( 114) 360600

. 2002-2000 ( 123)

2001 2000 . / 237 318

6591 %26.7 591287 %15.0

. %26.7 .

. (22-3 ) - - - - (%52)

1994 :

. / 303 21 (2002-2000) 69316

2002 2000 . 1995-1993

%3.5 75835 %5

: 2002 . ( . 952 )

%72.6

. (23 -3 )

:

2002-2000

49) 133929 1995-1993 . %6.5

2002-2000 . / 362 (

2000 . / 290 ( 60) 207915

2002 180416 %5.7 2002

2000 . . 2303 %7

) (2000 %50 ) (%50 )

. (24-3

:

. 2002 1993 (%10 %5 )

. / 115 136 2002-2000 1995-1993

80 1995-1993 48

%68.9 2000 . 2002-2000

2002 . 2001 %67.0

			4352	833879		
2002	. 2002-2000				%7.0	%6.4
(25-3	)	-	-(%85	)		
						:
	(	)	1999			
	)	39	433720			
%20.9			2002	2000	( /	89
2002						%29.2
					70000	
			( 26-3	) <sup>14</sup>	-	-
	33		20000			:
	. 2002-2000			38	1995-1993	
2000		/	1765	1625		
	1669	22.2		%1.1	%6.1	2002
3						
				907		
				%98		
			(27-3	)		
						:
		13126		2002-2000	1995-1993	
		10.5		7.6		
801	1308					
13815		%7.2		2002-2000	/	
			497	%1.8		
	2002		/	774	2002	
			(28-3	)		

. 2002

%45

"

"

- 14

2000 :

452 163312 ( . 341 ) 132660 2002 2001  
 . (29-3 ) / 60 55 . .

2002-2000 1995-1993 :

40 42 56722 51749

2000 . / 702 806

. 2002 2000 %48.1 %54.7  
 98849 ( . 822) 20297 2002  
 - - - (%60 ) . 2000  
 . (30-3 ) - -  
 . : ( )

%50 13607 2002

. 2002

. ( 5752 5533) 2002-2000 1995-1993  
 1760 1916 10.1 10.6  
 . 583 7784 2002 . /  
 . 2000 %17.2 %24.4  
 . (31-3 ) - - - - (%50 )

:

16 7000 1995-1993  
 33) 11792 2002-2000  
 . / 2758 2307 . ( )  
 ( . 1681 ) 14847 2002  
 2001  
 . 2002-2000 %2.1 %12.8  
 - - - - 2002  
 . (32-3 ) - -

37453 2001 :  
 24822 1995-1993 11888 .

/ 836 2168 2002-2000  
 21 26  
 864) 25076 2002  
 -2000 %21 %44.9 ( .  
 %84 .2002  
 . (33-3 ) - ( ) - -  
 : ( - - )  
 107 2002  
 32390 2002-2000 1995-1993  
 15 25 21648  
 . / 704 748 )  
 . 2002-2000  
 - - - - (2002 %41.7 2000 %75.5  
 . (34-3 ) -  
 :  
 127398 1995-1993  
 . ( 53) 248.6 2002-2000 ( 29 )  
 2002 . / 212 231  
 %11 ( . 2557 ) 295292  
 . 2000 (2001 ) %4  
 )  
 . (35-3 ) (2000 2002  
 %2.6 . :  
 . 2002-2000  
 10349 1995-1993 ( 23) 2753  
 . 2002-2000 ( 24)  
 2002 . / 2301 8448  
 2000 %28.1 . 901 12216  
 1586) %23.5

. (2000 4452 2002 /  
 . (36-3 )

( ) :

49000 15206 2002-2000 1995-1993

724 . ( 25 11 )

54205 2002 . / 512

. 2000 %6 %10 . 1138

- - -  
 . (37-3 ) -

1995-1993 :

16 74677 2002-2000

2001 . ( 101080) 2002

%21.3 2002 2000 . 2002 / 187

. ( . 868) %13

. (38-3 )

**3-3**

)

. (

. 2002

*1-3-3*

:

- - - - -

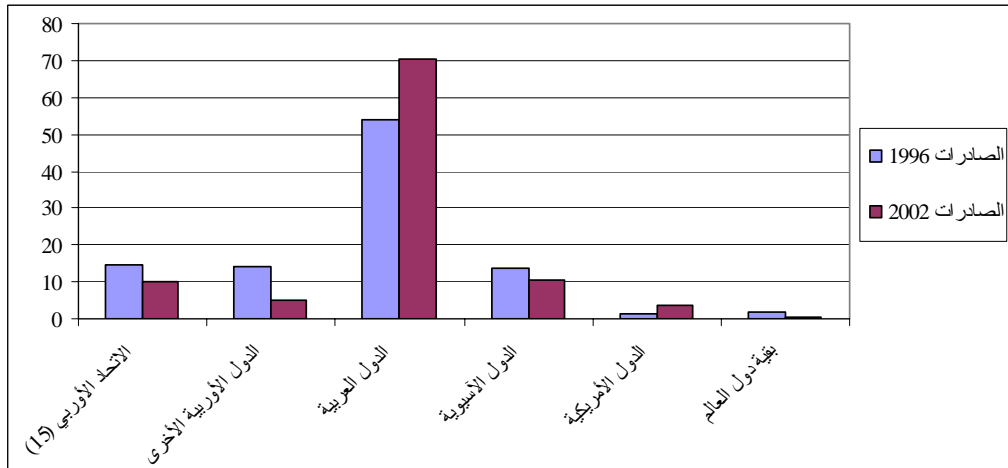
)

2002-1996 . (39-3

1996 %53.9 2002 %70.5  
 %8  
 2002  
 %10.5 %13.9  
 %10.2 %14.8  
 . (6-3 ) 2002 %4.9 1996 %14.1  
 %1.3  
 .2002 %3.4 1996

(%) 2002 1996

6-3



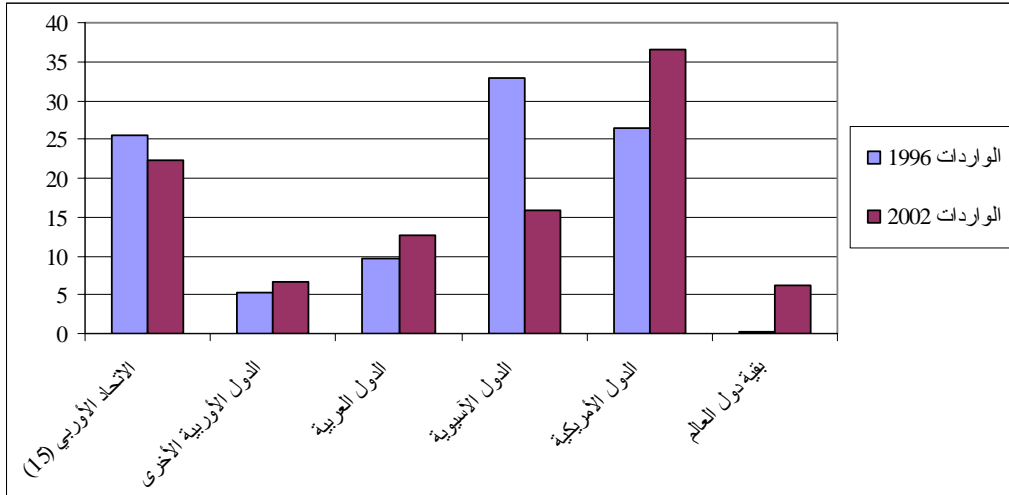
. 39-3 -

:

2002  
 2002 1996  
 . 2002 %36.5 %7.6  
 %15.8 %10  
 . 1996 %32.9 2002  
 2002 %22.3 %25.6  
 %6.7 2001 %18.4 1996 %5.2  
 . (7-3 39-3 ) %12.6 %9.7 . 2002

(%) 2002 1996

7-3



39-3

2-3-3

(40-3 )

2002

. 2002-1996

0.76 2002

2001

0.58

1997

0.80

. (39-3)

) (0.75

1996

)

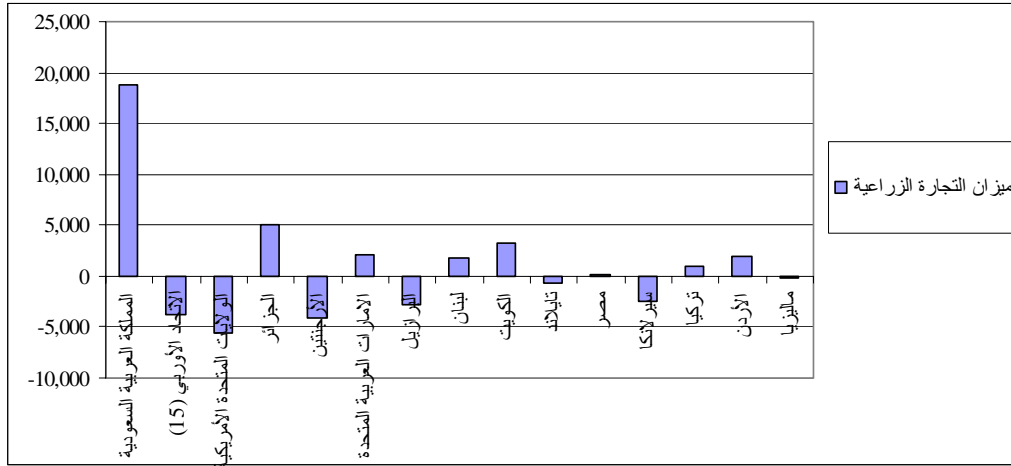
(1-) ( )

(1+)

. ( )

2002

8-3



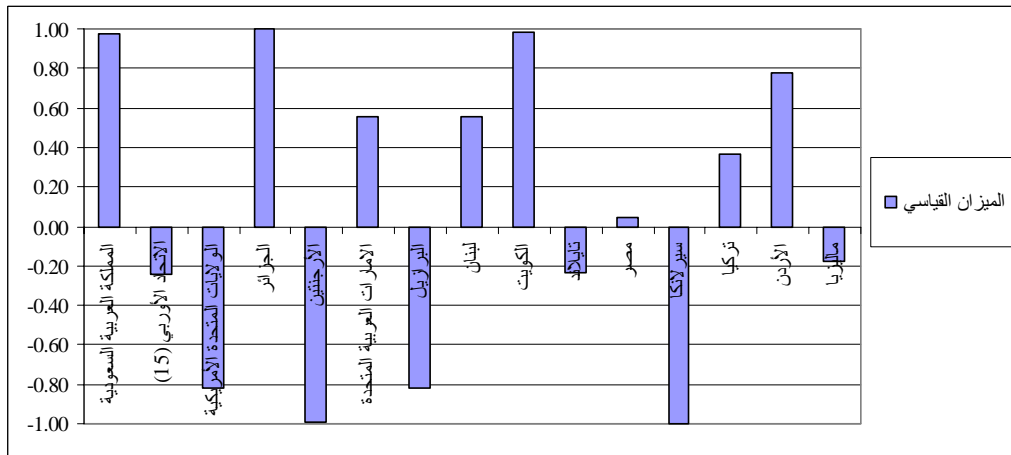
40-3

2002

2002 . (41-3 ) 2000  
 . (0.04 )  
 . 5.5  
 . 18.9  
 46-3 42-3

2002

9-3



40-3

3-3-3

2002

(10-3 )

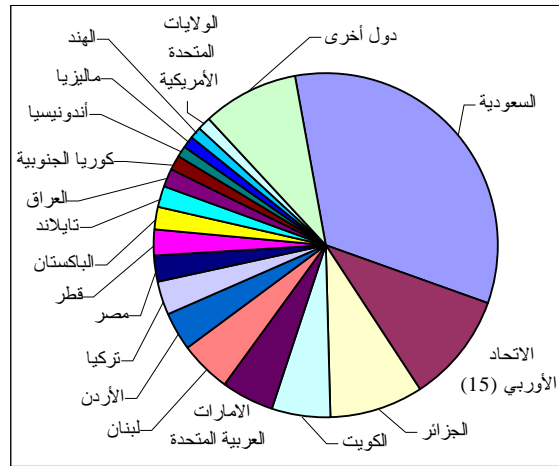
%33.3

(%8.8)

(%10.2)

2002

10-3

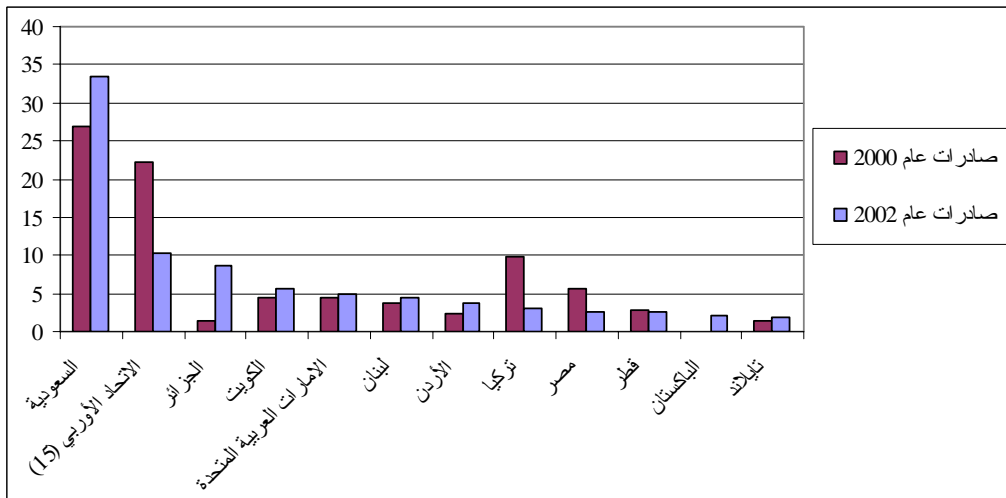


41-3

2000

(%) 2002 2000

11-3



41-3

. 2000 %93 %90.7 2002 18  
 (11-3 )  
 .2002  
 :  
 . (2002 . 19.1)  
 %10.7 ( ) %61  
 . %3.2 %3.5  
 %90.8 %78.4  
 . (47-3 )  
 . ( )  
 :  
 15 . . 5.8 2002  
 ( ) %93.2  
 %45  
 %15.4 ( - - )  
 . ( %99.9 ) . 902  
 586.2 (15)  
 . %10  
 - ( ) -  
 . (48-3 )  
 :  
 . 2002  
 %88.9 . 4465.9  
 5.3  
 ) %3.9  
 . (49-3 )  
 :  
 . (0.99)

%57 . 3.2 2002  
 . (%3.6) (%3.9) (%4.8)  
 )  
 . (50-3

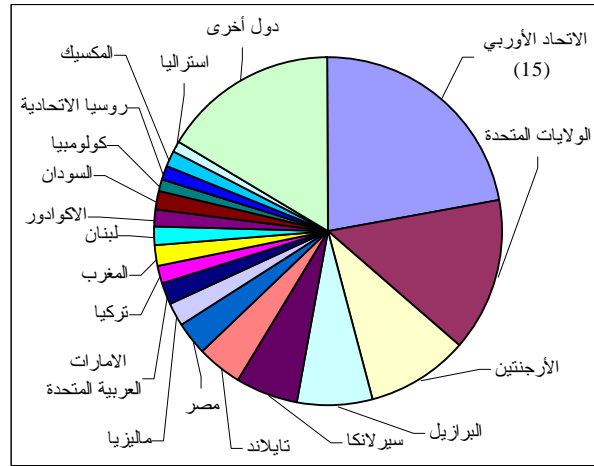
:  
 2002 .  
 . 0.55 . 2  
 - %6.7 - %6 - %40.3 :  
 . 15 %9.7 %6.6  
 )  
 . (51-3

4-3-3

%22.2 2002  
 - -  
 2000 . (12-3 41-3 ) - - -  
 . (2002 %3 )  
 %83.7 2000 %88.7  
 2002 . 2002  
 . ( - - - - )

2002

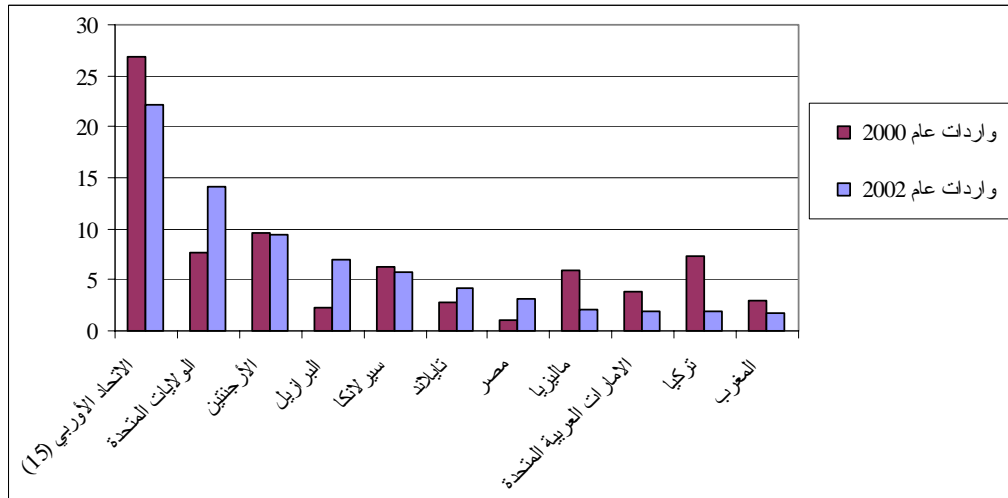
12-3



41-3 - :

(%) 2002 2000

13-3



41-3 - :

9.6

( ) -

%74.3

(52-3) ) %17 %39.7

:

16 . (53-3 ) . 6.1 2002  
 . ( . 3.7 70 ) %64.6  
 (%5.1) %15.6  
 . (%3.2)  
 . (53-3 )

:

2000 %9.5 .  
 4.1 2002 . 22 . 2002  
 . 2002 .  
 2002 %98.8  
 . 2323 ( )  
 %15.7 17 . ( %56.4)  
 . (54-3 )

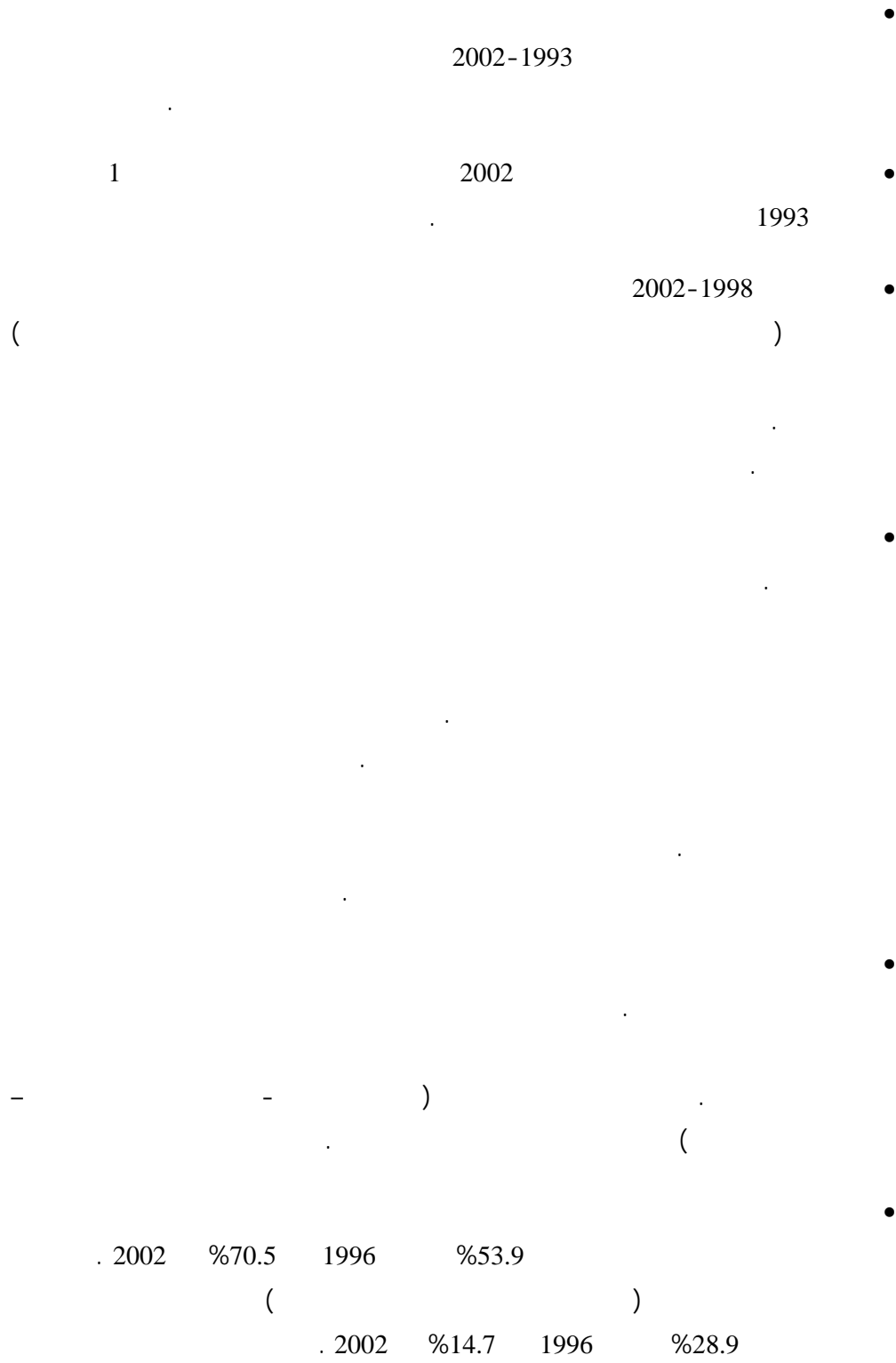
2002 2000 :

. ( ) 2002  
 . 2.75 2002  
 3 . (0.82-)  
 . %99.9  
 ) %23.8  
 . (55-3)

:

. %97.6  
 . %5.8 . 2.5 2002  
 - - ( ) - -  
 . (56-3 ) -

. 53-3 ( ) 10059090 10059010 -<sup>16</sup>  
 . 54-3 ( ) 9030010 9030020 -<sup>17</sup>



1996 %26.4

%12.6 %9.7

. 2002 %36.5

%22.3 %25.6

( - - - )



-

(2003

1-4

)

2-4

3-4

**1-4**

*1-1-4*

148

2003

26

2003

2005

(OECD)

%60

%200

- 2001

-

( )  
( )  
)

(

(2000

) 2001

-

18

( )

2003 31

-

:

-

-1

-2

"

"

1

"

"

2002

. 2003

2003

. 2003

---

%60

- 18

19

- ) " " . ( - -

148

- " " - -

20( )

2003

21" "

" "

---

- - - - - : - 19  
- - - - - - - - - -  
22  
- - - - - : - 20  
- - - - - : - 21

2004

2004

2003

( " " )

22

" "

- -

(1-4 ) 2004 31

)

( - - - -

---

- - - - " " - - : - 22

. 2005

2004	31	1-4
-	)	180
		(
		•
)	<i>de minimis</i>	(AMS
		•
		•
		•
	<i>de minimis</i>	•
		•
		•
		•
		•
		WT/GC/W/535, WTO Website :

( - - - )

15

%39

-

:

-

-

( %65 )

%40

( ) " "

2004

" "

(ACP)

" "

:

:

■

. ( )

■

■

2004

2004

"

2004

"

. ( )

. 1986

1993-1986

- " " - ) "Quad" . ( -

1

. 1986

( )

2-1-4

(Codex :  
· (IPPC) - (OIE) - Alimentarius)  
(OIE- IPPC -Codex)

Codex Alimentarius

1963 Codex Alimentarius  
( )

( - ) **OIE**

1924 25  
. 164 2002 28

**(IPPC)**

. IPPC

:

2 :

:

12 :

:

( )

( )

:

2003 . 2002

- 11 -

1999

2003

750

( )

3-1-4

(MEAs)

(MEAs)

12

200

180

-

-

-

2001

31

32

1995

2002 /

<sup>23</sup> 20

---

20

- <sup>23</sup>

:

: •

: •

: •  
( )

" "

: •

: •

: •

2-4

)

(

( )

24

2004

*1-2-4*

"

2003

"

"

"

:

:

Schengen Acquis

1995

2010

( )

---

\_24

1996/2/26

. 2000 1

. 1976

2003 22

168757

. 2007 225000 ( )

. 2001 25

. 1977 2004 1

. 2004 1

10 %5

. 2003

%34 %40

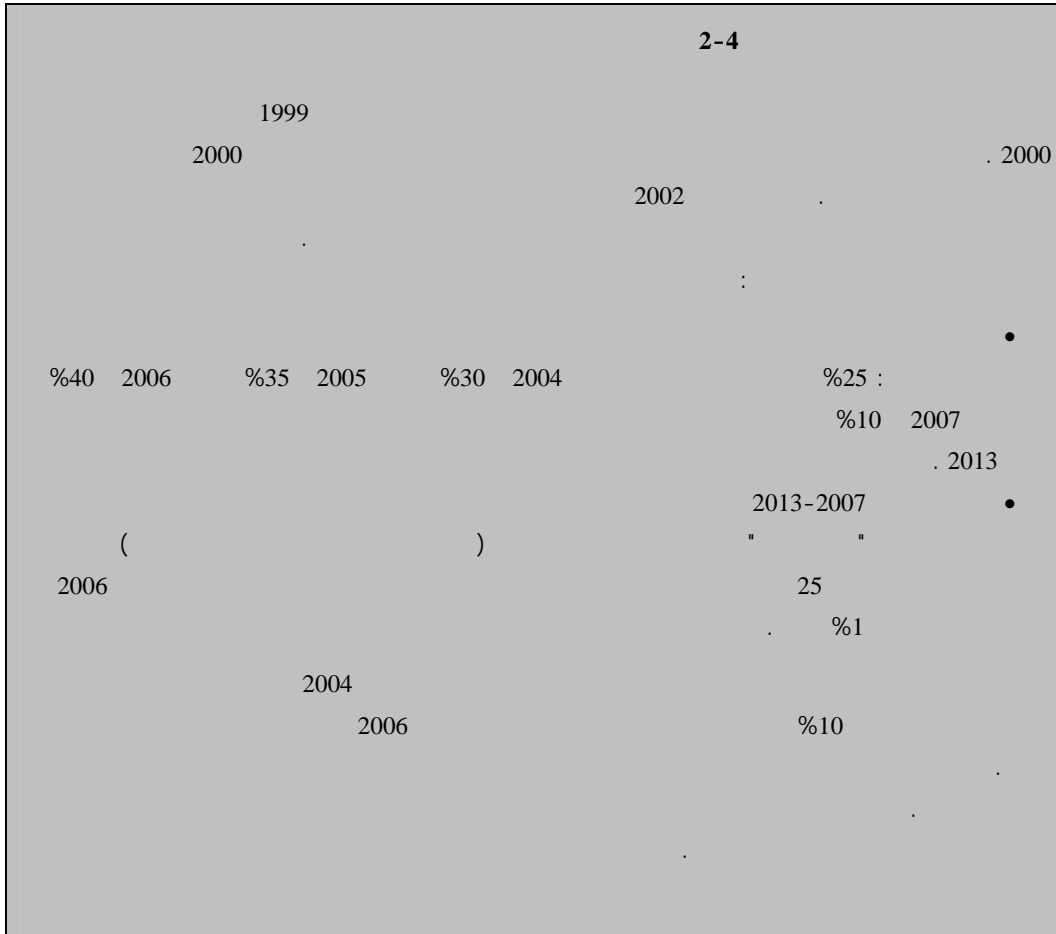
. 2004 25 15

75 10

25 15

. ( )  
)

(2-4



www.europa.eu.int

2-2-4

- -

-

-

( ) "hub and spoke"  
) ( )  
(

2006  
 - - - 2004 25 :

Pan-Euro-Mediterranean

pan-Euro med )  
 (2003  
 15 :  
 475 2004  
 120 500  
 600  
 %95

(GCC) : -  
 2004

2003 16.9 1991 1.5  
 2002 %46 10  
 - - - - )  
 ( -  
 - -

. (ASEAN)

**3-4**

*1-3-4*

2001

2004

. 2003

"

12

"

:

:

:

( )

:

/

:

/

30

. 2004

•

•

•

•

•

•

•

•

:

•

•

•

•

2-3-4

.(CBD)

1992

1996

(2002)

-

-

3-3-4

1998

2003

9

12

19

2004

- 
- 
- 
-

■

.

. 2015

:

:

-

-

-

.)

.) ( 12)

.) (

12

12

%)40

.) ( - - )

:

:

■

■

.) (%6

%80 %60 %6

%100

■

.  
.  
. 2000  
.  
16.1 . 2000  
. ( 181) %10 2003  
.  
(1-4 )  
55 2004  
( ) Tempus  
2006-2005  
.

1-4

( 14)	•	
18) 2	•	
(	•	
( 30)	•	
( 21)	•	
)	•	
( 11.6) (	•	
( 11)	•	
( 11)	•	
( 10)	•	
9.6)	•	
(	•	
8)	•	
(	•	
( 3)	•	

2004

•

•

2004

•

2001 •  
. 2004  
(2004 ) •  
.  
.  
.  
2004 19 •  
.  
.

