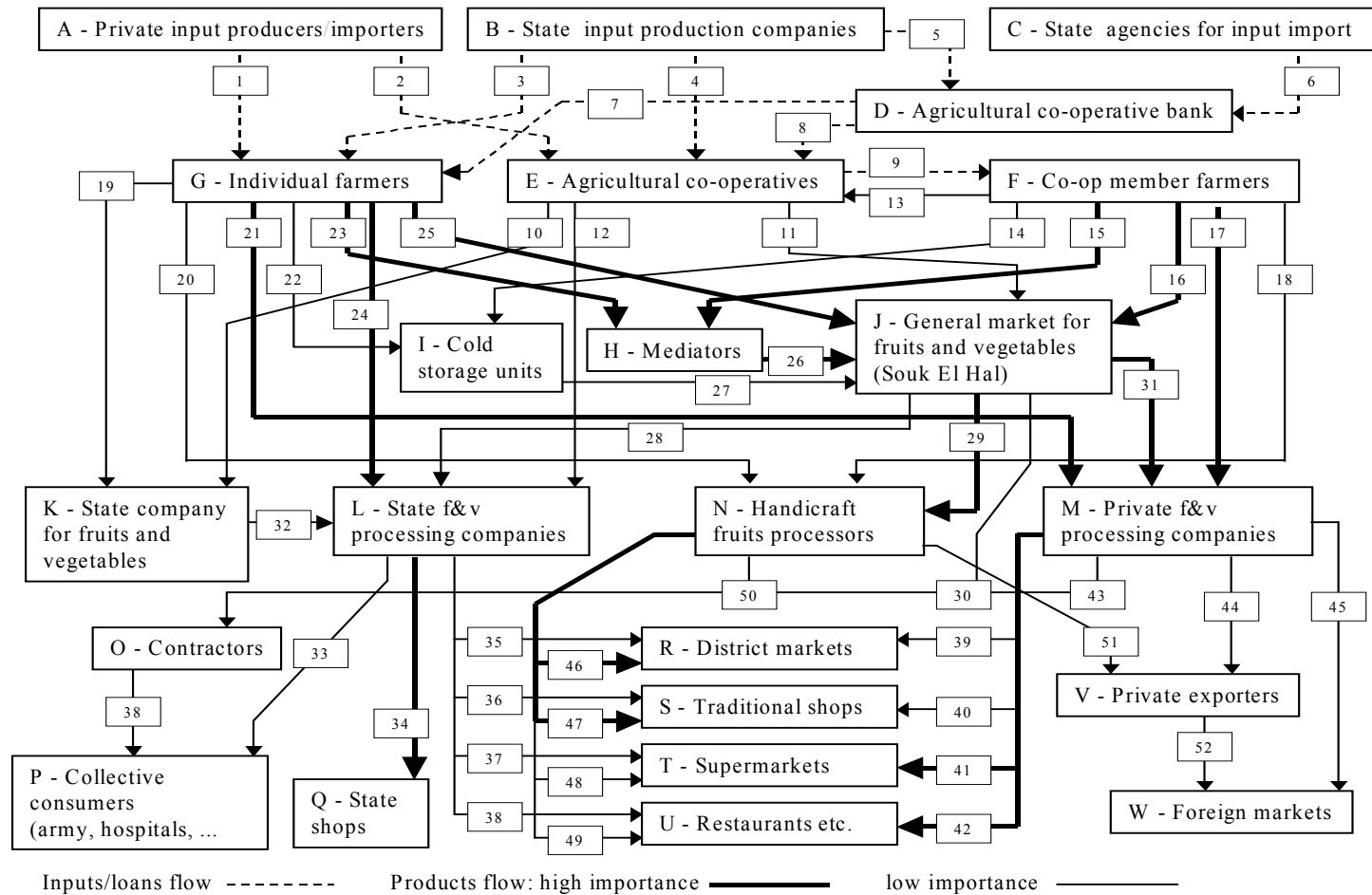


**Chart 2 - Flow chart for the marketing of processed fruits and vegetables**



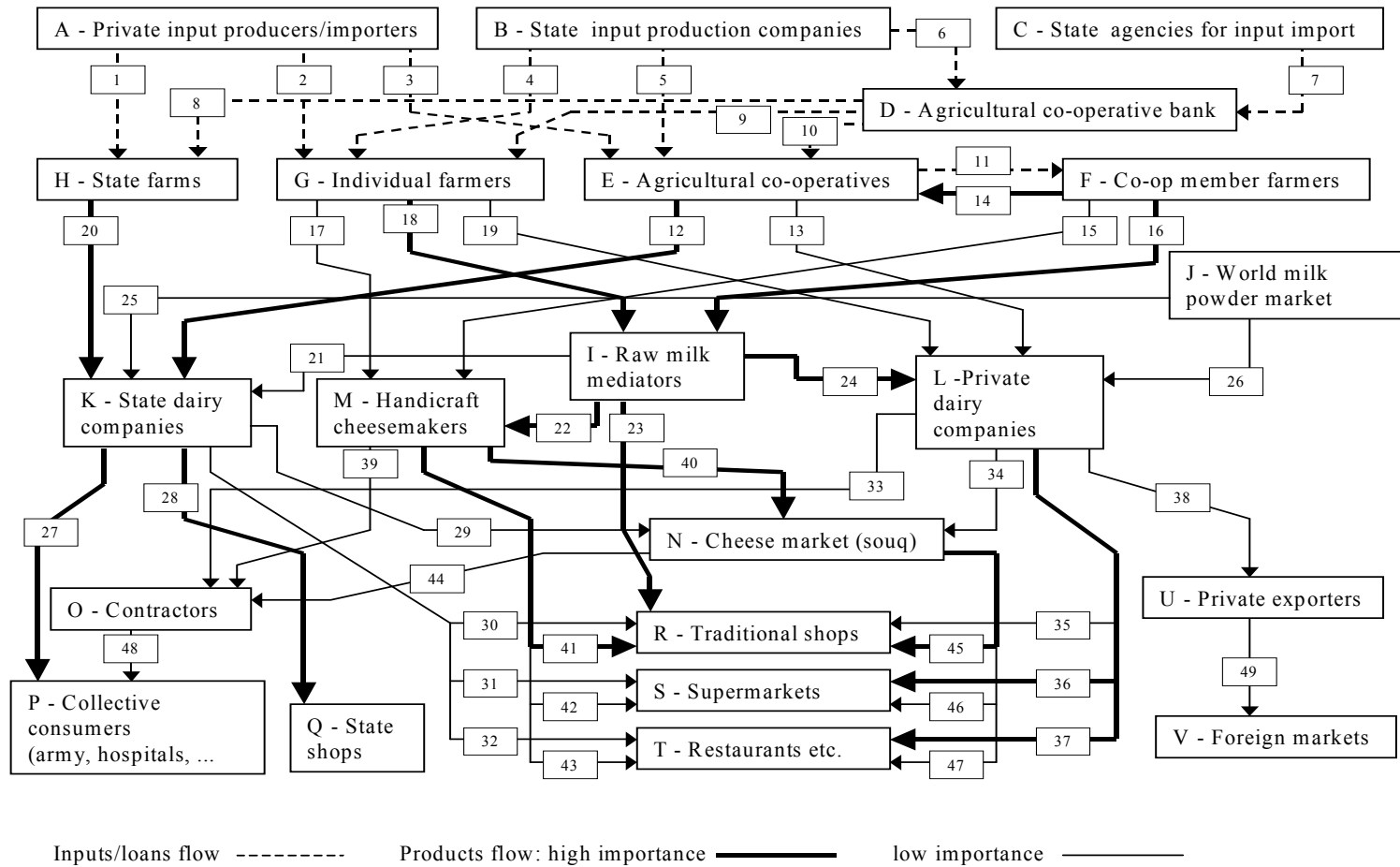
### **4.3. Dairy products**

Probably, the main characteristic of milk and dairy industry in Syria is the very great importance of the informal sector. The processing capacity of both public and private dairies (three state companies are active and 32 private dairies are listed by the Ministry of Industry) covers less than 10% of Syrian milk. The remaining part is either processed by small handicraft cheese-makers, sold as raw milk to consumers (and eventually processed at home into laban and labne) or consumed by the family of the producer. Also, due to this low organization, production pattern presents strong seasonality and erratic variations.

Unlike fruits and vegetables, agricultural co-operatives are quite important in marketing (for the formal sector) farmers raw milk, especially for sheep, much less for cows. Cow milk farms are mainly in the coastal area, the intermediate region (Hama, Homs) and the Damascus area. Often, they are 1-2 cows farms, much less concentrated than sheep.

State companies buy from co-operatives, through annual contracts. When state and private companies, buy from individual farmers, they almost always use mediators, so that generally they don't even know the milk producers. The state farms generally sell their milk to state processing companies. Another source of raw material is the import of milk powder for ice-cream and yogurt. Both private and state companies can import milk powder that way.

Chart 3 - Flow chart for the marketing of dairy products



Product mix is almost the same for private and public companies, except that the latter often produce UHT, instead of traditional sterilized milk. Only in Homs, there is a state company producing pasteurized milk, only for the local market, and has been in business for 20 years. Some companies started producing fruit flavored yogurt or milk (a private company in Homs, another in Aleppo), although for the moment the market is very limited

Liquid milk market is predominantly in the hands of state companies, which use the classical half liter glass bottle. The private companies mostly use plastic bottles or sometimes brick, and due to better packaging (and lower constraints on prices) they can obtain for the same product (sterilized milk) prices that are 60-70% higher than state dairies.

Cheese is produced both by private and state companies, but, the white cheese (accawi, hallum, mlallah) is produced mainly by handicraft units, on a very high seasonal basis. Handicraft cheese-makers are very often also farmers; the only exceptions are in the Hama area, where cheese is most traditional and it is possible to find also small processing establishments not connected to farms. Only "industrial" companies, both private and state, produce yellow and processed cheese. In the formal sector as well as in the informal one, cheese production presents a very high seasonality. Raw milk mediators are also selling raw milk to traditional and modern shops. Like for processed fruits and vegetables, modern outlets tend to represent the most important marketing channel for private processing companies.

Collective consumers are mostly supplied by state dairy companies, while the importance is lower for contractors, only used to implement their needs. As for all processed products, another outlet for state dairies is the network of state shops affiliated to the General Establishment for Retail.

Export market only concerns some quantities of white cheese and ghee in the Gulf area, predominantly exported by private traders; there is some direct export from state companies to foreign markets.

***Main findings:** The informal sector dominates the Syrian dairy industry. The milk processed (or simply sterilized for liquid consumption) by state and private dairies represents less than 10% of the total production. Even in this case, vertical relations between milk producers and processors are not regulated by contracts (except when co-ops market members milk, which is quite common for sheep milk) but are mediated by milk collectors; this situation makes quality management rather difficult.*

## 5. POLICY IMPLICATIONS

The analysis developed in previous chapters shows that, in order to design and implement a coherent strategy for the development of Syrian agribusiness, it is necessary to solve some internal contradictions (as, for example, that existing between a policy for agricultural production aimed at the generation of an

exportable surplus, and the lack of any policy for export enhancement), to remove some blocking factors (most of them are situated outside the agricultural and food sector) and to develop some pushing factors, especially in terms of agribusiness chain organization and offer of services. In this chapter, some considerations for such a development policy are suggested.

### **5.1. Horizontal and vertical organization**

The lack of horizontal farmers organization and the bad quality of vertical coordination are among the basic questions in Syrian agricultural marketing. The only tool of supply management is presently the annual plan, which concerns only production functions, has decision points far from the farmer and, also due to gradual liberalization of agricultural marketing, in recent years lost part of its capacity. Concentration of supply is necessary for implementation of standardization and grading and for reaching the “critical mass” needed in order to enter foreign markets and even to differentiate products into domestic market (with a brand, or an organic foods label, etc.). It is also a way to facilitate vertical relations which, in turn, are necessary for quality management and in order to ensure good transmission of the price signal through the marketing chain.

A starting point for this process of organization is the reorientation of farmers co-operatives and agricultural chambers. At best, these structures offer some services which are marketing pre-requisites, at the worst they are completely irrelevant for marketing. Co-ops have not been conceived as a marketing tool, and their re-orientation will be a difficult task: even the decision to found 24 new marketing co-ops, one for animal products and one for vegetable products in each governorate except urban Damascus, is symptomatic of the bureaucratic nature of the co-ops system. However, they are existing structures and it is more realistic to think of transforming them, through management reorganization, concentration and specialization, into a marketing tool than planning some new network superposing present structures.

Another important point for this reorganization is to provide legislative framework, as well as incentives (e.g. fiscal incentives or interest reduction on loans for specific projects) for integration contracts between farmers and processors. These contracts are useful for market stabilization, especially if price control is relaxed, as it is suggested (see para. 5.3) and allow to increase the control on raw material quality, thus improving the competitiveness of processed products through reduction of processing costs and increase of final quality. Especially for fresh products, it would also be highly beneficial to restructure wholesale markets (Souq el Hal for fruits and vegetables) in order to improve the quality and quantity of information and offer services to operators as well as physical infrastructures.

### **5.2. Services implementation**

A realistic task for the state involvement in agricultural marketing is not to be the first actor – which is neither desirable nor easy, as the decline of the fruits and

vegetables marketing company demonstrates – but to offer basic services necessary for the development of private marketing. This cannot be seen as a neutral economic balance activity, as it is now the case for state companies, but as a public investment whose return is measured in terms of public welfare. An important service to offer to all the actors in the agro-food chain is market information. Now, farmers can choose when to sell or to which market they would carry their products only through direct information from traders who are generally interested to keep the deal. Information on traded quantities would help wholesalers to program their actions and exploit market opportunities. Competition among traders and agricultural trade restructuring would be stimulated, with advantages both for producers and consumers. An area where public services are essential for business success is export. Foreign markets information, search of potential partners, insurance on export operations risk, generic promotion are some of the needs in this area. Other more classical services need to be better coordinated and finalized, e.g. agricultural research, extension, education and training (for both the private and public sectors).

### **5.3. Removing blocking factors**

Current pricing system, at the production level but even more at the wholesale and retail levels, is a major constraint for the development of an agro-marketing system. It has been seen that, even when official prices are not compulsory, they strongly reduce the flexibility of firm competitive behavior, affect negatively products differentiation and repress the rise of demand for variety coming from consumers. Its liberalization is a necessary factor in order to increase competition among firms, thus their competitiveness. Another blocking factor concerns exchange rate and currency access. As it has been discussed (see para. 2.4), present constraints have two main negative effects; namely, they take foreign investors off Syria and are an obstacle for Syrian companies in their trade operations abroad.

Import restrictions are considered a protective factor for domestic industry, and indeed they are. However, they reduce the stimulus for quality and competitiveness – as it is demonstrated by the comparison between Syrian and other countries' products on foreign markets – and reduce the variety on the market, blocking the development of new potential business areas. While, in the present situation, a complete and sudden import ban removal would have destructive consequences; gradual but constant steps in this direction can be beneficial both to Syrian industry and consumers.

### **5.4. Further privatization**

Syrian agribusiness sector needs the continuation of the effort started in the '80s aiming at the increase of private – both national and foreign – capitals invested in agriculture and, especially, in the food industry. Several proposals have been made in order to amend Law No. 10/1991, increasing incentives especially for foreign capital. The analysis of the law and of the projects approved since its promulgation suggests that probably it is not so much a question of improving the law or extending its benefits, but of creating better conditions for its application, for

instance through higher import liberalization and better currency convertibility (see para. 5.3), better access to credit and capital market (see para. 5.6) or in general the improvement of business environment (see para. 5.5).

But, further “privatization” also means introduction of innovative management and investment principles in the public sector (see the “Management by objectives new approach” box) and generally reducing the weight of government and parastatal entities in Syrian economy (see para. 6.5).

### **The “management by objectives” new approach**

Management by objectives is seen as a first step in order to re-think the public sector economic policy and renew industrial sector. Its main general principle is to give the company administration board and production board the freedom to decide about production and be in a position to raise the company’s revenue. In the present system, the Supreme Planning Council is deciding both the investment and the production plan. In the new system, the production plan will be the responsibility of the company. The company board prepares an annual budget and an annual plan, including objectives and means (trade relations, commissions, incentives, overwork, etc.) to achieve them. The budget and the production plan are then approved by the competent ministry before becoming operational.

In order to give the companies a solid financial position, the state will reevaluate their fixed capital, which has up to now the same nominal value as at the company creation. For example, the poultry company GOP has a nominal capital of 100 million pounds, but now the real value of its assets (11 establishments) is probably higher than 1 billion pounds. The difference is the value the company management created up to now; the government will “restitute” this value reevaluating the nominal capital. This capital will be available for the company annual budgeting at the Ministry of Finance; if it is not enough for the needs of the budget, the company can have a loan from the “General Debt Fund” of the Ministry of Finance, but it will have to reimburse this loan.

The new management rules will have, as objectives, to increase the productivity of labor, assets and inputs; if a company does not generate profits, it will not remain on the market. A new function, the cost directorate, will be activated in all state companies; the cost will become a dependent variable (while now it is taken as the starting point for the pricing system). Due to the new system of responsibility (the company’s management is responsible for the economic results), some procedures will be simplified. The company can buy inputs or carry out maintenance without announcing an auction for any order up to 200,000 pounds (now the ceiling is at 20,000) and will not need any caution on sales.

Up to now, the new system has been tested in four large companies, one in the glass, one in the ceramic and two in the cotton sector, with good results. Now, the test has been extended to 30 companies, again under the jurisdiction of the Ministry of Industry (while the first four were large companies, these 30 are medium-small companies). Being experimental, the new management system is not yet based on a specific law (but a new law is in preparation); its basis is simply a government decision.

The next step will be to amend the investment system, probably through a system of public holdings. There is hope to try the application of the management by objectives in an agricultural state company before the end of the year 2000.

## **5.5. Improvement of business environment**

Often ways for eliminating blocking factors for private, and especially foreign, investments are to be searched more in removal of administrative uncertainty and ensuring guarantees for investments than in explicit creation of incentives. This means, among other things, that a good law needs good by-laws in order to be correctly applied.

As an example, Law No.10/1991 states that foreign invested capitals and profits can be repatriated; it is clear how this will happen for a project generating an export flow, as export sales returns must be available for need of repatriation, while it is not clear how this would work in the case of projects oriented only to domestic market, as procedures are not defined.

It is not possible here to develop this point, which needs much finer studies and would carry us far from the objectives of this report, but probably despite about 40 bilateral agreements on foreign investment protections, several areas of apparent administrative uncertainty exist. Only, as examples, some of them can be listed:

- protection of intellectual property (which is, among other things, a necessary condition for licensing contracts, almost absent in Syrian food industry);
- procedures of controversial solution between foreign investors and national partners;
- timing and procedures of restitution of the amount asked by the Syrian government as a caution in auctions for supply to public sector (performance bond); and
- possibility of agency contracts breakup for general interest or national security reasons.

## **5.6. Financial system redefinition**

Limited access to credit, and more generally to financial market, is a major constraint both in agriculture and, even more, in the food industry. In agriculture, the strict link between credit system and planning system is a great factor of rigidity and potentially of distortion, if plan provisions are not accurate. It makes it difficult to raise the needed capital for crops and livestock raising outside the plan; loans are often available from middlemen who will trade farmers products, which is naturally beneficial but restrains farmers choice freedom and is an obstacle towards better horizontal and vertical organization. In the food industry access to bank credit is even more difficult, as banking system has been conceived and built in a framework where industrial sector was almost completely public.

In general, public control of interest rates has been probably beneficial to investors in a time when Syrian economy presented a high inflation rate, but is presently penalizing them, as inflation is zero or slightly negative and the differential between interest and inflation rates amounts to several percentage points (between 4 and 10 according to the sector and the category of customers).

Moreover, general under-capitalization of Syrian banks is a further impediment for credit access, while all aversion factors for foreign investments discussed above are

also obstacles against the possibility to obtain loans from abroad, which is allowed by Law No.10/1991.

Broad suggestions in this area can be:

- to innovate in the management of state banks, in order to make it less bureaucratic and more suitable to market needs;
- to partially deregulate banking system, allowing private and/or foreign banks to enter the market, although with proper hints and limitations;
- to remove rigidity factors for security issuance and access both for residents and non- residents; and
- to create the conditions for new financial tools, particularly a stock exchange.

## **6. PROJECT PROFILES**

Some of the implications presented in previous chapters involve major policy revisions and innovations, while others can be translated in specific projects. In this chapter, some possible projects are suggested, and feasibility studies profiles are shortly presented.

### **6.1. Building a market information system**

#### *i. Background and objectives*

Theoretically, several sources exist of documentation about current agricultural and food prices in Syria, although to a higher or lower extent, and in a more or less systematic way. Continuous price collection is made by the MAAR (at wholesale level and some at farm level) and the MSIT (at wholesale and retail levels); less systematically and for more specific reasons, the Ministry of Economy and Foreign Trade (for customs purposes, at wholesale level) and the Ministry of Finance (for fiscal purposes, at wholesale and retail levels) also collect prices. However, none of these sources is organized for prices check, analysis and dissemination, while this kind of information would be very useful for farmers in order to choose where and possibly when to carry their products and for traders in order to arbitrate between geographical markets, so improving market efficiency. Other areas of market documentation are even less covered. No information is available on current traded quantities (and very few also on historic quantities) and food companies operations (a database is under construction at the Directorate for the Private Industrial and Handicrafts Sector of the Ministry of Industry, but it will collect only static information).

The objective of the proposed study would, therefore, be to design a system for collection, clearance and public dissemination of market information for agricultural and food products, with the exception of those products where official mandatory pricing systems exist.

#### *ii. Contents*

The study should:

- review extent, organization, reliability and present utilization of market information collected in Syrian agro-food system;
- compare different sources, highlighting contradictions and overlaps, and suggest a rationalization of these collecting systems;
- make recommendations about information collection and management staff

and its training; extent, market levels and periodicity of price collection; extent of traded quantity information and food companies monitoring; systems of data transmission and processing; frequency, media utilization and accessibility of disseminated information; and

- estimate the cost of building and maintaining the market information system.

*iii. Methodology*

Documentation collection at relevant ministries offices; quantitative analysis on prices, margins and geographical differentials; interviews with farmers, traders and administration officers; desk work.

*iv. Human resources*

An agricultural economist, with experience in agricultural marketing and information systems management, for 8 weeks; local support for recorded price collection.

## **6.2. Improving the organization of the wholesale fruits and vegetables markets**

*i. Background and objectives*

Souq el Hal exists in all Syrian governorates, and they represent by far the most important marketing channel for fresh fruits and vegetables, and an important way also for products destined to processing. However, organization and management of these markets shows many weakness points in terms of market information (see para. 6.1), physical infrastructures, standardization of products offered, compliance with allowed commission rates, access control and waste handling.

The objective of the proposed study would, therefore, be to analyze in detail organization and management of such markets, from the legal, economic and commercial points of view, and make proposals for improving their effectiveness.

*ii. Contents*

The feasibility study should:

- examine legal and regulatory aspects concerning wholesale fruits and vegetables markets in Syria (competence and responsibilities of local and central institutions, regulation of market operations, responsibility regime of traders, regulations against anti-competitive behavior, ...);
- on a sample of wholesale markets (probably 3-4 would be enough), record and analyze market organization (functions of trade commission, licensees, fees and charges for market area utilization, arbitrating procedures, security requirements, communication with other markets, ...), operational aspects (controls on vehicles and products entry and exit, internal circulation, products standardization, products handling, trading days, delivery and trading hours, ...), contractual aspects (information and transparency, contract clauses and commissions, minimum lot size, transaction records and receipts, ...), services (parking, cleaning and waste disposal, cold storage, warehouses, pre-packaging areas, ...);
- make recommendations for the improvement and better coordination of the

above aspects; and

- starting from the present situation of the sampled markets, make a preliminary estimation of the cost of restructuring following different hypothesis on its comprehensiveness.

iii. *Methodology*

Collection and analysis of legislation (laws and by-laws); market visits, interviews with farmers, traders (commissioners, wholesalers, retailers, ...), trade commissions; desk work.

iv. *Human resources*

An agricultural economist, with specific experience in fruits and vegetables marketing and wholesale markets organization, for 6 weeks; local support for legislation collection.

### **6.3. Developing agricultural marketing farmer controlled businesses**

i. *Background and objectives*

The Syrian agricultural co-operative sector is quite disappointing if one looks at it as a tool for developing marketing of farms products. The vast majority of the co-operatives is far from marketing problems; when they sell products it is often through contracts with state companies. Generally, farmers prefer dealing with middlemen because they are paid cash and they have less bureaucratic complications. In many cases, middlemen profits are lower than badly managed co-op operating costs, although these are largely supported by the state. However, there are also signs of possible opportunistic traders' behavior. Trade commission, officially not exceeding 5% (which is rather low) can in fact reach 20% or 30% (which is very high). In some cases, co-operatives can be more effective than middlemen in organizing deliveries to a processing industry. But above all, in a social and economic environment which is experiencing a clear, although gradual, evolution towards market liberalization, the establishment of new companies, consumption patterns modification, co-ops or other farmer controlled business organizations can be the way to transmit these signals to farmers, while middlemen are in principle adverse to any change.

The objective of the feasibility study will be to assess in which sub-sectors and market conditions co-operative evolution towards marketing, or eventually creation of new forms of farmer controlled business, can be beneficial to farmers and generally to vertical relations improvement.

ii. *Contents*

The proposed study should:

- carry a detailed analysis of farmers co-operatives in the different sub-sectors of Syrian agriculture, their management and tasks, their links with the public sector, vertical organization and decision processes;
- analyze the way farmers route their products to the market or to processing companies, which kind of middlemen they use, how are contractual relations defined, either with the customer (wholesaler or processor) or the middleman, which marketing margins apply;
- for some selected sub-sectors, assess if and what kind of farmer controlled business can improve vertical organization optimizing information flows, reducing marketing margins or favoring better adjustment between demand and supply; and
- suggest, for the same sub-sectors, conditions and rules for internal organization

(members obligations, decision taking process, technical assistance and extension activities, ...), pre-marketing activities (as fruits and vegetables sorting, or milk refrigerated collecting) and marketing management of farmer controlled business.

*iii. Methodology*

Analysis of documentation and interviews on agricultural co-operative system; extensive partly structured interviews with farmers about their marketing activity; desk work.

*iv. Human resources*

One agricultural economist, with experience in marketing institutions and market structure analysis, for 8 weeks; support for collection and analysis of co-operative sector documentation.

#### **6.4. Corporativisation of agricultural and food state companies**

*i. Background and objectives*

Many state food companies are experiencing great difficulties in their competition with private companies. They are less innovative and more commodity -oriented, have lower capitalization and more constraints in their trade relations. In general, they have limited decision power and responsibility, and as a consequence worse management (subjectively or objectively). Agricultural farms are in a better competitive position, also because they are not confronted with the same kind of competition, but often they present similar management problems. In some cases (especially at the agricultural level), the existence of state companies is justified as they offer strategic services or inputs, but in many cases there isn't any reason why these businesses must be state controlled. Without some institutional and/or organizational change, these companies would see their relative competitiveness progressively weakened, and, in some cases, could accumulate important losses.

The objective of this study will be to study in detail agricultural and food state sectors, and to suggest solutions to improve their competitiveness and assure their economic sustainability.

*ii. Contents*

The study should:

- realize a detailed analysis, through the paradigm structure-conduct-performance, of the public sector in agriculture and in food industry;
- forecast possible scenarios under different hypothesis of institutional and/or organizational companies innovation (coming from the adoption of new management approach up to the transformation into public-private joint ventures or even total privatization) and evaluate the feasibility of these hypotheses; and
- recommend for each of the state companies in agriculture (9) and in food industry (22) optimal solution in order to improve competitiveness and assure economic sustainability.

*iii. Methodology*

Individual structured interviews with each one of the state agricultural and food

companies; industrial organization analysis of the public sector and, to the extent allowed by available information, competing private sub-sectors; firms balance sheets reconstruction and analysis; desk work.

iv. *Human resources*

An agricultural economist, with specific competence in agribusiness management, for 8 weeks; an industrial economist, with experience in S-C-P analysis, for 6 weeks; and a business economist, with experience in balance sheets analysis, for 3 weeks; qualified support for questionnaires.

## ANNEX I. REFERENCES

1. John Abbot: *Marketing fruits and vegetables*. FAO, 1970
2. John Abbot (ed.): *Agricultural and food marketing in developing countries: Selected readings*. CAB, 1993
3. AFMESA: *Small farmer marketing improvement in the context of marketing liberalization (Report of an AFMESA/FAO workshop, Harare, October 1999)*. 1999
4. AFMESA: *Food marketing liberalization – a critical review of experiences to date (Report of an AFMESA/FAO workshop, Lusaka, September 1995)*. 1995
5. Ambasciata d'Italia Damasco, Ufficio commerciale: *Siria. Guida pratica per operatori economici*. 1999
6. Cormac Cullinan: *Law and markets. Improving the legal environment for agricultural marketing*. FAO, 1999
7. G. Dixie: *Horticultural marketing – a resource and training manual for extension officers*. FAO, 1989
8. B. T. Dugdill and A. G. Gadri: *Syrian Arab Republic; Milk collection and processing, technical mission report, 09 to 23 May 1999*. FAO, 1999
9. Lawrence E. Hinkle and Peter Montiel (eds): *Exchange rate misalignment. Concepts and measures for developing countries*. Oxford University Press, 1999
10. FAO: *Country Profile: The State of Food and Agriculture in Syria*. 1999
11. FAO, *Technical co-operation programme: Agribusiness development in the new lands. Egypt*. 1999
12. Fruit tree development project: *Fruit tree project: Marketing report*. 1990
13. Ivan Malevolti: *Syria. Olive oil sub-sector study (report prepared for FAO project GCP/SYR/006/ITA)*. 1999
14. Morton Satin: *Food quality and international trade*. FAO, 1996
15. Saleh M. Nsouli and Mounir Rached: *Capital account liberalization in the Southern Mediterranean*, in: *Finance and Development*, vol. 35, n. 4 (Dec 1998)
16. Andrew W. Shepherd: *A guide to marketing costs and how to calculate them*. FAO, 1993
17. Andrew Shepherd: *Market information services. Theory and practice*. FAO, 1997
18. Andrew W. Shepherd and Alexander J.F. Schalke: *The Indonesian horticultural market information service*. FAO, 1995
19. Lawrence D. Smith: *Agricultural Parastatal Reform (paper prepared for FAO-TCAS)*. 1998
20. Syrian European Business Center: *Executive summary of the export promotion missions to the Gulf States 1998/99 organized by SEBC*. 1999
21. Syrian European Business Center: *Olive oil sub-sector in Syria: a survey*. 1997
22. Noëlle Terpend: *Guide pratique de l'approche filière. Le cas de l'approvisionnement et la distribution des produits alimentaires dans les villes*. FAO, 1997
23. Eric Tollens: *Les marchés de gros dans les grandes villes africaines*. FAO, 1997
24. Union of the chambers of commerce: *Società per la commercializzazione delle verdure, frutta e prodotti agricoli – sommario dello studio di produttività economica (in Italian)*. 1999
25. World Bank: *Bureaucrats in business*. 1995
26. World Bank: *Les apports de capitaux privés aux pays en développement*. 1997
27. World Bank: *Syrian Arab Republic at a glance*. 1999

## ANNEX II. LIST OF INTERVIEWED PEOPLE

- Serry **El Aiul**, Director General, General Organization for Food Industries
- Mohammad **Almufa'alni**, Director of Trading, Al Ariaf Dairy Company
- Sameh **Aloush** , General Manager, Agricultural Cooperative Bank
- Mohammed Jamal **Alsatel**, Director, Directorate for Price Affairs, Ministry of Supply and Internal Trade
- Majd **Ayoub**, General Manager, Federation of the Syrian Chambers of Agriculture
- George **Catinis**, Manager, EICC, Syrian European Business Center
- Barakat **Chaheen**, Director, Directorate for the Private Industrial and Handicrafts Sector, Ministry of Industry
- Abed Al Nabi **Daada**, Director, Directorate for Marketing and International Trade, Ministry of Supply and Internal Trade
- Mohammed **Zein El Din**, Director, Directorate for the Economic Sector, Ministry of Agriculture and Agrarian Reform (MAAR)
- Lorenzo **Galanti**, Counselor for Economic Affairs, Italian Embassy
- Akram **Ghanem**, General Manager, Modern Company for Conserves and Agricultural Industries
- Mamun **Al Hyjazi**, Cheese trader
- Fadi **Istwani**, Manager, Business Upgrading, Syrian European Business Center
- Falah S. **Jabr**, Secretary-General , Arab Federation for Food Industries
- S. **Kaakeh**, Chairman and General Director, Bakri Kaakeh Sons Co. (Dolls)
- Bassel **Katabi**, Manager, Export Promotion, Syrian European Business Center
- Kamal Jad **Al Karim** Hudifa, Chairman, Agricultural Chamber of Suwaydah
- Hassan **Katana** , Director, Directorate for Agricultural Affairs, MAAR
- Ghassan Hamadeh **El Khayat**, Professor of Food Science, Damascus University
- Mohammed **Khazma**, Director, Directorate for Agricultural Economics, MAAR
- Makhlof **Makhlof**, General Director G.O.P. (Poultry State Company)
- Rafic Mohammad **Mayhob**, Vice-president, Federation of Farmers Unions
- Mohammad **Al Moussa** , Chairman, Al-Chark Company for Food Products, and general director of beer, biscuits and chocolate branch
- Khaled Al Sabi **Al Najjar**, Professor of Agricultural Economics, University of Aleppo
- Rimon **Najjar** , General manager of dairy branch, , Al-Chark Company for Food Products
- Mohammed Ali **Al Sabbagh**, General Manager, Agrosyr (Ghadak), Syrian Arab Company for the Development of Agricultural Products
- Chihade **Salaheldin**, President, Fresh Mountain Juice Co. (Jabal Al Asser)
- Said **Sallam**, Fruits and vegetables trader and Director of the Trade Union of Souq El Hal, Damascus.
- Mohammad **Sarakbi**, Director of the Investment Office, Council of Ministers
- Omar L. **Al Shalet**, Chairman, Federation of the Syrian Chambers of Agriculture
- Jean Jacques **Sgaravizzi**, Consultant for marketing of food products, Syrian European Business Center
- Nahi Al **Shibani** , Director, Directorate for Statistics and Planning, MAAR

- Ahmad **Al Youssef**, Commercial Director, Damas Dairy Company
- A fruit cool storage plant owner
- Two dairy farmers and two fruit farmers

**ANNEX III. LIST OF COMPANIES INTERVIEWED THROUGH STRUCTURED QUESTIONNAIRES**

*State agricultural companies affiliated to the Ministry of Agriculture and Agrarian Reform*

Company	Main products
General Establishment for Agricultural Mechanization – Damascus	Mechanization services
General Organization for Seeds Multiplication – Damascus	Seeds
General Establishment for Fodder - Damascus	Foodstuff
General Establishment for Cattle - Hama	Milk, beef, calves
General Establishment for Fish – Jabla (Lattakia)	Fish
General Establishment for State farms – Deir-ezzor	Crops
General Establishment for Poultry – Damascus	Poultry

*Agricultural private/public joint ventures (under Decree 10/86 provisions)*

Company	Main products
Baraka Company for Agricultural and Livestock Production – Damascus	Crops, fruits
Al Kalamon Company – Damascus	Crops, fruits, honey
Al Cham Company – Damascus	Flowers
Ghadak Company - Damascus	Crops, canned vegetables
Nama Company – Damascus	Crops, flowers

*State food companies affiliated to the General Organization for Food Industries*

Company	Industry
Drakish Water Bottling Company – Drakish (Tartous)	Non- alcoholic beverages
Boukein Water Bottling Company – Boukein	Non- alcoholic beverages
Grape Processing Company – Zaydal (Homs)	Alcoholic beverages (distillates)
Syrian Arab Company for Grape Processing – Al Suwaydah	Alcoholic beverages (distillates)
Barada Company for Processing Beer – Kodsaya (Damascus)	Alcoholic beverages (Beer)
Alshark Company for Food Products – Aleppo	Alcoholic beverages (beer); cereals derivatives; sugar and sweets; milk and dairy products
General Establishment for Pasta and Vermicelli – Dar’ah	Cereals derivatives
Kamilia Company for Food Products – Damascus	Cereals derivatives

Al Ghraoui Syrian Company for Biscuits and Chocolates – Damascus	Cereals derivatives; sugar and sweets
Syrian Arab Company for Dairy Products – Damascus	Milk and dairy products
Dairy Company – Homs	Milk and dairy products
Drying Onion and Vegetables Company - Al Salamiah (Hama)	Processed fruits and vegetables
Canned Food and Agricultural Products Modern Company - Damascus	Processed fruits and vegetables
Canned food economic unit – Idlab	Processed fruits and vegetables
Canned food economic unit – Al Mayaden (Dar Al Zowr)	Processed fruits and vegetables
Canned food economic unit – Al Hasakah	Processed fruits and vegetables
Syrian Coastal Company for Canned and Processed food – Jabla (Lattakia)	Processed fruits and vegetables
Syrian Can Company – Mzareeb (Dar’ah)	Processed fruits and vegetables
Syrian Arab Company for Sudanese Pistachio Processing and Marketing – Tartous	Processed fruits and vegetables
Syrian Industrial Company for Vegetable Oils – Aleppo	Oils and fats
Oils Company – Hama	Oils and fats
Arab Soap and Oil Processing Company – Damascus	Other processed food

*State companies affiliated to the Ministry of Economy and Foreign Trade*

Company	Main products
General Establishment for Ginning and Marketing Cotton – Aleppo	Cotton and cotton seeds

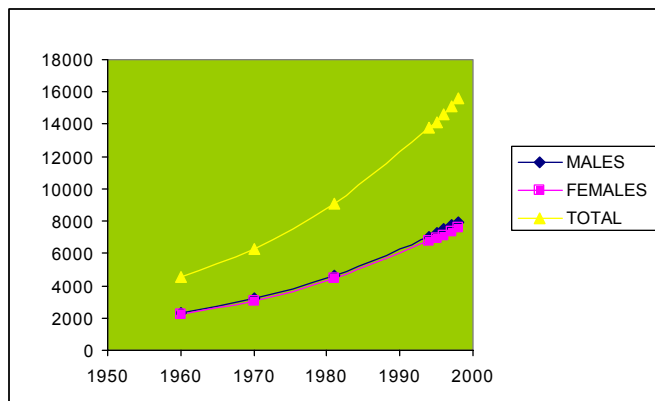
*State companies affiliated to the Ministry of Supply and Internal Trade*

Company	Industry
General Establishment for Fruits and Vegetables – Damascus	Distribution of fresh fruits and vegetables

**1 - Population of Syria at the time of censuses (1970, 1981, 1994) and mid year estimations (1995-1999)**

number/000/

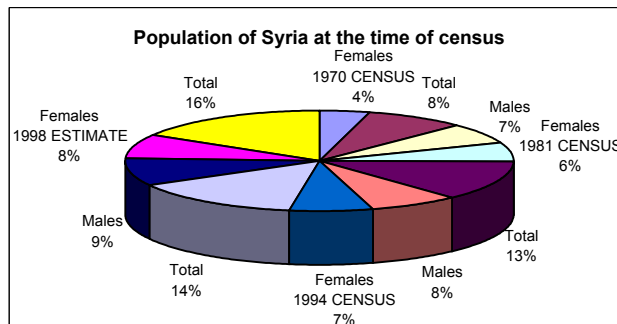
YEAR	MALES	FEMALES	TOTAL
1960	2344	2221	4565
1970	3233	3072	6305
1981	4622	4424	9046
1994	7049	6733	13782
1995	7238	6915	14153
1996	7477	7142	14619
1997	7723	7377	15100
1998	7965	7632	15597



2 - Population of Syria at the time of censuses (1970, 1981, 1994) and 1998 estimation, by age group and sex

AGE GROUOP	1970 CENSUS			1981 CENSUS			1994 CENSUS			1998 ESTIMATE		
	Males	Females	Total	Males	Females	Total	Males	Females	Total	Males	Females	Total
Less than year	120	111	231	182	171	353	206	191	397	239	213	452
1-----4	494	465	959	710	685	1395	850	803	1653	956	908	1864
5-----9	559	517	1076	723	693	1416	1087	1033	2120	1227	1168	2395
10-----14	443	398	841	632	589	1221	1030	975	2005	1163	1106	2269
15-----19	307	295	602	525	494	1019	814	785	1599	924	893	1817
20-----24	239	222	461	385	373	758	632	622	1256	717	702	1419
25-----29	169	183	352	284	277	561	527	518	1045	597	588	1185
30-----34	156	167	323	227	224	451	427	420	847	494	481	975
35-----39	158	159	317	172	175	347	332	320	652	374	366	740
40-----44	138	125	263	164	166	330	271	256	527	303	290	593
45-----49	107	96	203	141	139	280	202	190	392	231	214	445
50-----54	79	75	154	151	138	289	170	171	341	191	191	382
55-----59	62	56	118	97	85	182	135	129	264	151	145	296
60-----64	63	66	129	80	75	155	144	133	277	159	153	312
65 +	139	137	276	149	140	289	222	187	409	239	214	453
<b>Total</b>	<b>3233</b>	<b>3072</b>	<b>6305</b>	<b>4622</b>	<b>4424</b>	<b>9046</b>	<b>7049</b>	<b>6733</b>	<b>13784</b>	<b>7965</b>	<b>7632</b>	<b>15597</b>

\*the number doesn't include Syrian population abroad

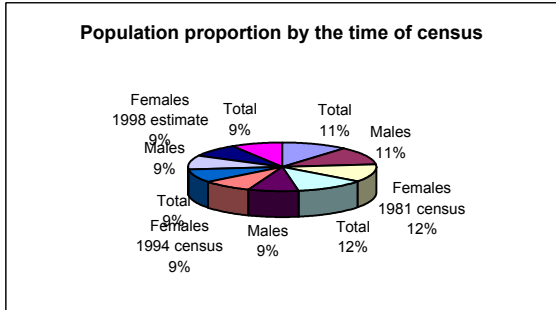


POPULATION OF SYRIA AT THE TIME OF (1970-1981-1994) CENSUSES & 1998 ESTIMATE BY AGE GROUPS AND SEX

AGE GROUOP	1970 CENSUS			1981 CENSUS			1994 CENSUS			1998 ESTIMATE		
	Males	Females	Total	Males	Females	Total	Males	Females	Total	Males	Females	Total
Less than year	120	111	231	182	171	353	206	191	397	239	213	452
1-----4	494	465	959	710	685	1395	850	803	1653	956	908	1864
5-----9	559	517	1076	723	693	1416	1087	1033	2120	1227	1168	2395
10-----14	443	398	841	632	589	1221	1030	975	2005	1163	1106	2269
<b>Total</b>	<b>1616</b>	<b>1491</b>	<b>3107</b>	<b>2247</b>	<b>2138</b>	<b>4385</b>	<b>3173</b>	<b>3002</b>	<b>6175</b>	<b>3585</b>	<b>3395</b>	<b>6980</b>
15-----19	307	295	602	525	494	1019	814	785	1599	924	893	1817
20-----24	239	222	461	385	373	758	632	622	1256	717	702	1419
25-----29	169	183	352	284	277	561	527	518	1045	597	588	1185
30-----34	156	167	323	227	224	451	427	420	847	494	481	975
35-----39	158	159	317	172	175	347	332	320	652	374	366	740
40-----44	138	125	263	164	166	330	271	256	527	303	290	593
45-----49	107	96	203	141	139	280	202	190	392	231	214	445
50-----54	79	75	154	151	138	289	170	171	341	191	191	382
55-----59	62	56	118	97	85	182	135	129	264	151	145	296
60-----64	63	66	129	80	75	155	144	133	277	159	153	312
65 +	139	137	276	149	140	289	222	187	409	239	214	453
<b>Total</b>	<b>1617</b>	<b>1581</b>	<b>3198</b>	<b>2375</b>	<b>2286</b>	<b>4661</b>	<b>3876</b>	<b>3731</b>	<b>7609</b>	<b>4380</b>	<b>4237</b>	<b>8617</b>
<b>Grand total</b>	<b>3233</b>	<b>3072</b>	<b>6305</b>	<b>4622</b>	<b>4424</b>	<b>9046</b>	<b>7049</b>	<b>6733</b>	<b>13784</b>	<b>7965</b>	<b>7632</b>	<b>15597</b>

3 - Population proportional distribution at the time of censuses (1970, 1981, 1994) and 1998 estimate by age group and sex

Age GROUPS	1970 census			1981 census			1994 census			1998 estimate		
	Males	Females	Total	Males	Females	Total	Males	Females	Total	Males	Females	Total
Less than year	3.7	3.6	3.7	3.9	3.9	3.9	2.9	2.8	2.9	3	2.8	2.9
1-----4	15.3	15.1	15.2	15.4	15.5	15.4	12.1	11.9	12	12	11.9	12
5-----9	17.3	16.8	17.1	15.6	15.6	15.6	15.4	15.3	15.4	15.4	15.3	15.4
10-----14	13.7	13	13.3	13.7	13.3	13.5	14.6	14.5	14.5	14.6	14.5	14.5
15-----19	9.5	9.6	9.6	11.4	11.2	11.3	11.6	11.7	11.6	11.6	11.7	11.6
20-----24	7.4	7.2	7.3	8.3	8.4	8.4	9	9.2	9.1	9	9.2	9.1
25-----29	5.2	6	5.6	6.1	6.3	6.2	7.5	7.7	7.6	7.5	7.7	7.6
30-----34	4.8	5.4	5.1	4.9	5.1	5	6.1	6.3	6.2	6.2	6.3	6.2
35-----39	4.9	5.2	5	3.7	4	3.8	4.7	4.8	4.7	4.7	4.8	4.7
40-----44	4.3	4.1	4.2	3.5	3.7	3.6	3.8	3.8	3.8	3.8	3.8	3.8
45-----49	3.3	3.1	3.2	3.1	3.1	3.1	2.9	2.8	2.8	2.9	2.8	2.9
50-----54	2.4	2.4	2.4	3.3	3.1	3.2	2.4	2.5	2.5	2.4	2.5	2.4
55-----59	1.9	1.8	1.9	2.1	1.9	2	1.9	1.9	1.9	1.9	1.9	1.9
60-----64	2	2.1	2	1.7	1.7	1.7	2	2	2	2	2	2
65 +	4.3	4.6	4.4	3.3	3.2	3.3	3.1	2.8	3	3	2.8	3
Total	100	100	100	100	100	100	100	100	100	100	100	100



AGE GROUOP	1970 CENSUS			1981 CENSUS			1994 CENSUS			1998 ESTIMATE		
	Males	Females	Total	Males	Females	Total	Males	Females	Total	Males	Females	Total
Less than year	3.7	3.6	3.7	3.9	3.9	3.9	2.9	2.8	2.9	3	2.8	2.9
1-----4	15.3	15.1	15.2	15.4	15.5	15.4	12.1	11.9	12	12	11.9	12
5-----9	17.3	16.8	17.1	15.6	15.6	15.6	15.4	15.3	15.4	15.4	15.3	15.4
10-----14	13.7	13	13.3	13.7	13.3	13.5	14.6	14.5	14.5	14.6	14.5	14.5
Total	50	48.5	49.3	48.6	48.3	48.4	45	44.5	44.8	45	44.5	44.8
15-----19	9.5	9.6	9.6	11.4	11.2	11.3	11.6	11.7	11.6	11.6	11.7	11.6
20-----24	7.4	7.2	7.3	8.3	8.4	8.4	9	9.2	9.1	9	9.2	9.1
25-----29	5.2	6	5.6	6.1	6.3	6.2	7.5	7.7	7.6	7.5	7.7	7.6
30-----34	4.8	5.4	5.1	4.9	5.1	5	6.1	6.3	6.2	6.2	6.3	6.2
35-----39	4.9	5.2	5	3.7	4	3.8	4.7	4.8	4.7	4.7	4.8	4.7
40-----44	4.3	4.1	4.2	3.5	3.7	3.6	3.8	3.8	3.8	3.8	3.8	3.8
45-----49	3.3	3.1	3.2	3.1	3.1	3.1	2.9	2.8	2.8	2.9	2.8	2.9
50-----54	2.4	2.4	2.4	3.3	3.1	3.2	2.4	2.5	2.5	2.4	2.5	2.4
55-----59	1.9	1.8	1.9	2.1	1.9	2	1.9	1.9	1.9	1.9	1.9	1.9
60-----64	2	2.1	2	1.7	1.7	1.7	2	2	2	2	2	2
65 +	4.3	4.6	4.4	3.3	3.2	3.3	3.1	2.8	3	3	2.8	3
Total	50	51.5	50.7	51.4	51.7	51.6	55	55.5	55.2	55	55.5	55.2
Grand total	100	100	100	100	100	100	100	100	100	100	100	100

**4 - Population proportional distribution at the time of censuses (1970, 1981, 1994) and 1998 estimate by mohafazat, and annual growth rate**

Mohafazat	%of Mohafazat population from total population				Annual growth rate / 000		
	1960	1970	1981	1994	1960-1970	1970-1981	1981-1994
Damascus	11.6	13.3	12.3	10.1	46.7	26.3	18
Da-Rural-area	10.4	9.9	10.1	11.9	45.8	36.2	45.9
Aleppo	21	20.9	20.8	21.6	32.4	33	36.1
Homs	8.8	8.7	9	8.8	31.5	37.2	31.6
Hama	7.1	8.1	8.1	8	33.3	33.2	31.1
Latakia	11.5	6.2	6.1	5.4	27.9	32.7	23.6
Deir-er-Zor	4.8	4.6	4.5	5.2	26.4	31	43.6
Idleb	7.3	6.1	6.4	6.6	26	36.4	34.8
Al-Hasaeh	7.7	7.4	7.4	7.4	26.7	33.2	33.1
Al-Rakka	3.9	3.8	3.9	4	31.7	33.1	35.9
Al-Sweida	2.2	2.2	2.2	1.9	34.5	32.9	23
Dar'a	3.7	3.7	4	4.4	53	41.5	40.3
Trrtous	0	4.5	4.9	4.3	31.8	35.6	21.9
Qunetira	0	0.3	0.3	0.3	32.8	43.4	48.8
Total	100	100	100	100	32.8	33.5	33

5 - Urban and rural population by mohafazat and sex in 1960,1970,1981,1994

/000/

Mohafazat	1960						1970						1981						1994 estimate					
	Urban		Rural		Total		Urban		Rural		Total		Urban		Rural		Total		Urban		Rural		Total	
	Males	Total	Males	Total	Males	Total	Males	Total	Males	Total	Males	Total	Males	Total	Males	Total	Males	Total	Males	Total	Males	Total	Males	Total
Damascus	273	530	0	0	273	530	431	837	0	0	431	837	651	1251	0	0	651	1251	803	1552	0	0	803	1552
Da-Rural-area	37	74	206	399	243	473	94	182	227	439	321	621	169	328	302	591	471	919	338	644	405	807	743	1451
Aleppo	244	474	248	483	492	957	367	708	309	609	676	1317	577	1114	376	755	953	1869	987	1883	475	973	1462	2856
Homs	76	150	128	251	206	401	131	254	148	292	279	546	216	419	199	394	415	813	364	701	302	600	666	1301
Hama	61	118	106	206	167	324	91	175	172	340	263	515	128	248	248	486	376	734	198	376	376	740	573	1116
Latakia	58	111	215	416	273	527	77	149	125	241	202	390	119	232	166	323	285	555	191	367	239	467	430	834
Deir-er-Zor	29	58	84	163	113	221	46	89	102	204	148	293	65	125	142	284	207	409	96	186	207	413	303	599
Hileb	26	51	145	282	171	333	44	85	152	299	196	384	62	121	232	459	294	580	99	197	381	750	477	937
Al-Hasaah	31	58	151	295	182	353	60	96	189	372	239	468	99	194	233	468	332	653	220	416	296	614	518	1030
Al-Rakka	8	15	85	163	93	178	21	39	107	205	128	244	69	135	108	213	177	348	181	361	81	157	262	518
Al-Sweida	12	24	37	76	49	100	20	39	50	101	70	140	29	57	70	142	99	199	47	91	103	209	150	300
Dar'a	11	22	71	146	82	168	17	33	99	199	116	232	40	78	142	285	182	363	102	199	205	423	307	616
Tirtous	0	0	0	0	0	0	29	55	126	247	155	302	46	89	182	354	228	443	82	155	272	534	354	689
Quneitra	0	0	0	0	0	0	0	0	9	16	9	16	0	0	13	26	13	26	0	0	23	45	23	45
Total	868	1685	1476	2880	2344	4565	1418	2741	1815	3564	3233	6305	2270	4391	2413	4781	4683	9172	3702	7112	3369	6732	7071	13844

**6 - Urban population distribution at the Time of Censuses (1960, 1970, 1981, 1994) by Mohafazat**

Mohafazat	1960			1970			1981			1994		
	urban	Total	%	urban	Total	%	urban	Total	%	urban	Total	%
Damascus	530	530	100.00	837	837	100.00	1251	1251	100.00	1552	1552	100.00
Da-Rural-area	74	473	15.64	182	621	29.31	328	919	35.69	644	1451	44.38
Aleppo	474	957	49.53	708	1317	53.76	1114	1869	59.60	1883	2856	65.93
Homs	150	401	37.41	254	546	46.52	419	813	51.54	701	1301	53.88
Hama	118	324	36.42	175	515	33.98	248	734	33.79	376	1116	33.69
Latakia	111	527	21.06	149	390	38.21	232	555	41.80	367	834	44.00
Deir-er-Zor	58	221	26.24	89	293	30.38	125	409	30.56	186	599	31.05
Idleb	51	333	15.32	85	384	22.14	121	580	20.86	187	937	19.96
Al-Hasaeh	58	353	16.43	96	468	20.51	194	663	29.26	416	1030	40.39
Al-Rakka	15	178	8.43	39	244	15.98	135	348	38.79	361	518	69.69
Al-Sweida	24	100	24.00	39	140	27.86	57	199	28.64	91	300	30.33
Dar'a	22	168	13.10	33	232	14.22	78	363	21.49	193	616	31.33
Trrtous	0	0		55	302	18.21	89	443	20.09	155	689	22.50
Qunetira	0	0		0	16	0.00	0	26	0.00	0	45	0.00
<b>Total</b>	<b>1685</b>	<b>4565</b>	<b>36.91</b>	<b>2741</b>	<b>6305</b>	<b>43.47</b>	<b>4391</b>	<b>9172</b>	<b>47.87</b>	<b>7112</b>	<b>13844</b>	<b>51.37</b>

**7 - Rural population distribution at the Time of Censuses (1960, 1970, 1981, 1994) by Mohafazat**

Mohafazat	1960			1970			1981			1994		
	Rural	Total	%	Rural	Total	%	Rural	Total	%	Rural	Total	%
Damascus	0	530	0.00	0	837	0.00	0	1251	0.00	0	1552	0.00
Da-Rural-area	399	473	84.36	439	621	70.69	591	919	64.31	807	1451	55.62
Aleppo	483	957	50.47	609	1317	46.24	755	1869	40.40	973	2856	34.07
Homs	251	401	62.59	292	546	53.48	394	813	48.46	600	1301	46.12
Hama	206	324	63.58	340	515	66.02	486	734	66.21	740	1116	66.31
Latakia	416	527	78.94	241	390	61.79	323	555	58.20	467	834	56.00
Deir-er-Zor	163	221	73.76	204	293	69.62	284	409	69.44	413	599	68.95
Idleb	282	333	84.68	299	384	77.86	459	580	79.14	750	937	80.04
Al-Hasaeh	295	353	83.57	372	468	79.49	469	663	70.74	614	1030	59.61
Al-Rakka	163	178	91.57	205	244	84.02	213	348	61.21	157	518	30.31
Al-Sweida	76	100	76.00	101	140	72.14	142	199	71.36	209	300	69.67
Dar'a	146	168	86.90	199	232	85.78	285	363	78.51	423	616	68.67
Trrtous	0	0		247	302	81.79	354	443	79.91	534	689	77.50
Qunetira	0	0		16	16	100.00	26	26	100.00	45	45	100.00
<b>Total</b>	<b>2880</b>	<b>4565</b>	<b>63.09</b>	<b>3564</b>	<b>6305</b>	<b>56.53</b>	<b>4781</b>	<b>9172</b>	<b>52.13</b>	<b>6732</b>	<b>13844</b>	<b>48.63</b>

8 - Population of 10 years and over by educational status and sex (1978-1993)

Year& Sex		illiterate		literate and over		Total		
		Urban	Rural	Urban	Rural	Urban	Rural	Total
1978	M	233663	438216	1223541	1006966	1457204	1445182	2902386
	F	499860	1024572	880420	406942	1380280	1431514	2811794
	T	733523	1462788	2103961	1413908	2837484	2876696	5714180
1979	M	258598	422063	1261622	1070890	1520220	1492953	3013173
	F	559849	1023356	840978	443316	1400827	1466672	2867499
	T	818447	1445419	2102600	1514206	2921047	2959625	5880672
1983	M	241484	414343	1413536	1222104	1655020	1636447	3291467
	F	497000	1062390	1058859	549206	1555859	1611596	3167455
	T	738484	1476733	2472395	1771310	3210879	3248043	6458922
1989	M	215055	295689	1978821	1718588	2193876	2014277	4208153
	F	535982	830752	1546632	1126432	2082614	1957184	4039798
	T	751037	1126441	3525453	2845020	4276490	3971461	8247951
1991	M	203668	263567	2209389	1881005	2413057	2144572	4557629
	F	512225	789517	1725710	1216951	2237935	2006468	4244403
	T	715893	1053084	3935099	3097956	4650992	4151040	8802032
1993	M	total urban	557000		4418000			4975000
	F	and rural	1438000		3261000			4699000
	T		1995000		7679000			9674000

من نتائج المسح الديمغرافي لعام/١٩٩٣\*  
نشرة ١٩٩٥

9 - Households, population in households and average households size by mohafazat and habitat (1960, 1970, 1981)

Mohafazat	Urban			Rural			Total			
	No. of households	Households Population	Average Size of Households	No. of households	Households Population	Average Size of Households	No. of households	Households Population	Average Size of Households	
Damascus- City	1960	101632	520772	5.1	0	0	0	101632	520772	5.1
	1970	147143	824113	5.6	0	0	0	147143	824113	5.6
	1981	229452	1251028	5.5	0	0	0	229452	1251028	5.5
Damascus	1960	15358	73018	4.8	75182	379835	5	90540	452853	4.9
	1970	29591	180227	6.1	75799	438974	5.8	105390	619201	5.9
	1981	54605	328105	6	88601	590691	6.7	143206	918796	6.4
Aleppo	1960	87227	466653	5.4	85434	458840	5.4	172661	925493	5.4
	1970	118094	701293	5.9	104459	607845	5.8	222553	1309138	5.9
	1981	186122	1114463	6	121220	754786	6.2	307342	1869249	6.1
Homs	1960	27010	148506	5.5	40312	228357	5.7	67322	376863	5.6
	1970	41240	252196	6.1	47286	291564	6.2	88526	543760	6.1
	1981	66791	418819	6.3	58977	393698	6.7	125768	812517	6.5
Hama	1960	19906	116677	5.9	35171	194152	5.5	55077	310829	5.6
	1970	26558	173816	6.5	55323	339816	6.1	81881	513632	6.3
	1981	38951	247743	6.4	70703	486590	6.9	109654	734333	6.7
Lattakia	1960	21545	109292	5.1	74175	403445	5.4	95720	512737	5.4
	1970	26538	147764	5.6	41447	240297	5.8	67985	388061	5.7
	1981	39747	231555	5.8	50223	323228	6.4	89970	554783	6.2
Deir_ezor	1960	9239	56235	6.1	26918	156046	6.8	36157	212281	5.9
	1970	12909	88123	6.8	31534	202993	6.4	44443	291116	6.6
	1981	17732	124564	7	39957	284566	7.1	57689	409130	7.1
Idleb	1960	9520	49705	5.2	49764	258190	5.2	59284	307895	5.2
	1970	14399	84316	5.9	54146	298534	5.5	68545	382850	5.6
	1981	19351	121379	6.3	72669	458612	6.3	92020	579991	6.3
Al-Hasakeh	1960	10450	56869	5.4	45407	250603	5.6	55857	307472	5.5
	1970	15733	94960	6	60494	371179	6.1	76227	466139	6.1
	1981	30445	193890	6.4	70507	468534	6.6	100952	662424	6.6
Al-Rakka	1960	2523	13929	6.5	23061	123189	5.3	25584	137118	5.4
	1970	6408	38956	6.1	35960	204210	5.7	42368	243166	5.7
	1981	20772	134904	6.5	33136	213468	6.4	53908	348372	6.5
Al-Sweida	1960	5011	24105	4.8	14001	67719	4.8	19012	91824	4.8
	1970	7141	38377	5.4	18225	100932	5.5	25366	139309	5.5
	1981	10487	57381	5.5	24227	141733	5.9	34714	199114	5.7
Dar,a	1960	4158	22679	5.5	26969	140542	5.2	31127	163221	5.2
	1970	5625	33022	5.9	33033	199231	6	38658	232253	6
	1981	11270	77769	6.9	39768	235200	7.2	51038	312969	7.1
Tartous	1960	0	0	0	0	0	0	0	0	0
	1970	9800	54855	5.6	40257	246708	6.1	50057	301563	6
	1981	15681	89328	5.7	54011	353440	6.5	69692	442768	6.4
Quneitra	1960	0	0	0	0	0	0	0	0	0
	1970	0	0	0	2697	16490	6.1	2697	16490	6.1
	1981	0	0	0	3971	26148	6.6	3971	26148	6.6
Total	1960	313579	1658440	5.3	497394	2660918	5.3	810973	1658440	5.3
	1970	461179	2712021	5.9	600660	3558772	5.9	1061839	6270793	5.9
	1981	741406	4390928	5.9	727970	4780694	6.6	1469376	9171622	6.2

\* Source: 1960 and 1970 Population censuses.  
Preliminary results of 1981 population census  
\*note: Bedouins in 1960 are excluded

10 - Population, manpower and labourforce by sex (1978-1991) (thousands)

YEAR & SEX	Labour force					Manpower		Population		
	Employed		Unemployed		Total	Urban	Rural	Urban	Rural	Total
	Urban	Rural	Urban	Rural						
1978 M	813	856	39	40	1748	1426	1402	2054	2231	4285
1978 F	106	159	4	7	276	1349	1389	1940	2177	4117
1978 T	919	1015	43	47	2024	2775	2791	3994	4408	8402
1979 M	873	889	31	38	1831	1485	1451	2165	2281	4446
1979 F	93	237	5	8	343	1365	1412	2021	2256	4277
1979 T	966	1126	36	46	2174	2850	2863	4186	4537	8723
1983 M	943	943	34	31	1951	2623	1598	2339	2579	4918
1983 F	122	238	3	9	372	1542	1535	2188	2522	4710
1983 T	1065	1181	37	40	2323	3165	3183	4527	5101	9628
1984 M	1138	808	51	32	2029	1875	1370	2745	2160	4905
1984 F	133	167	7	20	327	1791	1329	2622	2089	4711
1984 T	1271	975	58	52	2356	3666	2699	5365	4251	9616
1989 M	1307	1148	77	56	2588	2143	1981	3025	2961	5986
1989 F	171	273	21	27	492	2056	1932	2830	2903	5733
1989 T	1478	1419	98	83	3078	4199	3913	5855	5864	11719
1991 M	1459	1251	92	56	2858	2371	2118	3272	3222	6494
1991 F	186	354	50	38	628	2217	1989	3064	2971	6035
1991 T	1645	1605	142	94	3486	4588	4107	6336	6193	12529

\*Population of this table is the result of labourforce survey

a            b            c            d            e            f            g            h            i            j

11 - Population, manpower and labourforce by habitat (1978-1991) (thousands)

YEAR & SEX	Labour force					Manpower		Population		
	Employed		Unemployed		Total	Urban	Rural	Urban	Rural	Total
	Urban	Rural	Urban	Rural						
1978	919	1015	43	47	2024	2775	2791	3994	4408	8402
1979	966	1126	36	46	2174	2850	2863	4186	4537	8723
1983	1065	1181	37	40	2323	3165	3183	4527	5101	9628
1984	1271	975	58	52	2356	3666	2699	5365	4251	9616
1989	1478	1419	98	83	3078	4199	3913	5855	5864	11719
1991	1645	1605	142	94	3486	4588	4107	6336	6193	12529

A	B	C	D	E
%ur empl- ed to total Labour forc	%Ru emp- ed to total Labour forc	%Ur labour force to Ur population	%Ru labour force to Ru population	% total lab- our force to total pop-
0.96	0.96	0.24	0.24	0.24
0.96	0.96	0.24	0.26	0.25
0.97	0.97	0.24	0.24	0.24
0.96	0.95	0.25	0.24	0.25
0.94	0.94	0.27	0.26	0.26
0.92	0.94	0.28	0.27	0.28

12 - Syrian Population (10 Years Of Age And Over) By Educational Status, Sex and Habitat (1970, 1981, 1994)

Education Status		a			c	d			e	f			h	i
		1970	1981	1994		% from all population	% from all population	% from all population						
		Urban	Rural	Total		Urban	Rural	Total		Urban	Rural	Total		
Illiterate	M	220974	488124	709098	11.25	219057	419365	638422	6.96	220040	343340	563380	4.09	
	F	466855	982234	1449089	22.98	503687	1018510	1522197	16.6	476730	917750	1394480	10.12	
	T	687829	1470358	2158187	34.23	722744	1437875	2160619	23.56	696770	1261090	1957860	14.21	
Literate	M	343807	389162	732969	11.63	445852	467237	913089	9.96	614950	724600	1339550	9.72	
	F	208835	88897	297732	4.72	324117	230590	554707	6.05	528430	514880	1043310	7.57	
	T	552642	478059	1030701	16.35	769969	697827	1467796	16	1143380	1239480	2382860	17.29	
Primary	M	203512	173231	376743	5.98	392013	368169	760182	8.29	628040	571850	1199890	8.71	
	F	120475	33332	153807	2.44	258472	154716	413188	4.5	510830	422360	933190	6.77	
	T	323987	206563	530550	8.41	650485	522885	1173370	12.79	1138870	994210	2133080	15.48	
Intermediat	M	72038	45659	117697	1.87	147112	118954	266066	2.9	315010	240450	555460	4.03	
	F	39207	5330	44537	0.71	106526	41772	148298	1.62	261010	148010	409020	2.97	
	T	111245	50989	162234	2.57	253638	160726	414364	4.52	576020	388460	964480	7.00	
Secondary	M	58374	23120	81494	1.29	114089	73797	187886	2.05	222030	139550	361580	2.62	
	F	19980	1408	21388	0.34	62795	12767	75562	0.82	157260	56960	214220	1.55	
	T	78354	24528	102882	1.63	176884	86564	263448	2.87	379290	196510	575800	4.18	
Vocational Certificate	M	8284	6285	14569	0.23	24375	21869	46244	0.5	66470	57960	124430	0.90	
	F	7325	734	8059	0.13	23674	5945	29619	0.32	78750	33110	111860	0.81	
	T	15609	7019	22628	0.36	48049	27814	75863	0.83	145220	91070	236290	1.71	
University & Master Degree	M	21365	3619	24984	0.40	50936	16922	67858	0.74	110980	45990	156970	1.14	
	F	4296	186	4482	0.07	14278	1168	15446	0.17	44330	8500	52830	0.38	
	T	25661	3805	29466	0.47	65214	18090	83304	0.91	155310	54490	209800	1.52	
Doctorate	M	1836	149	1985	0.03	2353	252	2605	0.03	3830	810	4640	0.03	
	F	136	15	151	0.00	248	28	276	0	580	50	630	0.00	
	T	1972	164	2136	0.03	2601	280	2881	0.03	4410	860	5270	0.04	
Not Stated	M	245	187	432	0.01	476	199	675	0.01	4890	1940	6830	0.05	
	F	142	104	246	0.00	276	438	714	0.01	3470	1330	4800	0.03	
	T	387	291	678	0.01	752	637	1389	0.02	8360	3270	11630	0.08	
Grand total	M	930435	1129536	2059971	32.67	1396263	1486764	2883027	31.43	2186240	2126490	4312730	31.29	
	F	867251	1112240	1979491	31.40	1294073	1465934	2760007	30.09	2061390	2102950	4164340	30.22	
	T	1797686	2241776	4039462	64.07	2690336	2952698	5643034	61.52	4247630	4229440	8477070	61.51	
Intermediat	M	72038	45659	117697	1.87	147112	118954	266066	2.9	315010	240450	555460	4.03	
	F	39207	5330	44537	0.71	106526	41772	148298	1.62	261010	148010	409020	2.97	
	T	111245	50989	162234	2.57	253638	160726	414364	4.52	576020	388460	964480	7.00	
Secondary	M	58374	23120	81494	1.29	114089	73797	187886	2.05	222030	139550	361580	2.62	
	F	19980	1408	21388	0.34	62795	12767	75562	0.82	157260	56960	214220	1.55	
	T	78354	24528	102882	1.63	176884	86564	263448	2.87	379290	196510	575800	4.18	
Vocational Certificate	M	8284	6285	14569	0.23	24375	21869	46244	0.5	66470	57960	124430	0.90	
	F	7325	734	8059	0.13	23674	5945	29619	0.32	78750	33110	111860	0.81	
	T	15609	7019	22628	0.36	48049	27814	75863	0.83	145220	91070	236290	1.71	
University & Master Degree	M	21365	3619	24984	0.4	50936	16922	67858	0.74	110980	45990	156970	1.14	
	F	4296	186	4482	0.07	14278	1168	15446	0.17	44330	8500	52830	0.38	
	T	25661	3805	29466	0.47	65214	18090	83304	0.91	155310	54490	209800	1.52	
Doctorate	M	1836	149	1985	0.03	2353	252	2605	0.03	3830	810	4640	0.03	
	F	136	15	151	0	248	28	276	0	580	50	630	0.00	
	T	1972	164	2136	0.03	2601	280	2881	0.03	4410	860	5270	0.04	
Total intermediat to doctorate	M	161897	78832	240729		338865	231794	570659		718320	484760	1203080		
	F	70944	7673	78617		207521	61680	269201		541930	246630	788560		
	T	232841	86505	319346		546386	293474	839860		1260250	731390	1991640		
%Total/grand Total		17.40	6.98	11.69		24.27	15.59	19.79		32.86	22.80	27.90		
		8.18	0.69	3.97		16.04	4.21	9.75		26.29	11.73	18.94		
		12.95	3.86	7.91		20.31	9.94	14.88		29.67	17.29	23.49		

13 - Per capita food expenditure by food category and habitat (1971-72 and 1985-86) (S.L.)

Commodity	1971-----1972					1985-----1986				
	Urban	Rural	Total	%from food Expenditure	% from total Expenditure	Urban	Rural	Total	%from food Expenditure	% from total Expenditure
1-Cereal&there product	73.5	80.12	77.66	20.6	10.6	208.5	227	216.1	5.3	2.7
2-Legumes(dry)	5.1	5.91	5.45	1.4	0.7	111.9	146.3	126.1	3.1	1.6
3-Meat&Fish& Egg	89.38	44.48	67.49	17.9	9.2	853.3	665	775.4	18.9	9.7
4-Dairy product	47.44	35.01	41.91	11.1	5.7	694.5	572.7	644.1	15.7	8.1
5-Vegetable oil	34.21	31.59	33.14	8.8	4.5	615.6	726.3	661.4	16.1	8.3
6-Vegetable	49.61	38.97	44.22	11.7	6	543.5	493.1	522.7	12.7	6.6
7-Fruit& crackers	40.91	24.58	33.21	8.8	4.5	377.8	270.5	333.4	8.1	4.2
8-Sugar&sugary products	33.87	36.47	35.36	9.4	4.8	256.8	255.1	256.1	6.2	3.2
9-Other food com.	20.53	12.34	16.88	4.5	2.3	236.5	198.6	220.8	5.4	2.8
10-Drink&soft drink	18.88	25.04	22.28	5.9	3	205	209.5	206.9	5	2.6
11- Tobacco&other	no data	no data	no data			153.6	145.2	150.1	3.5	1.9
<b>TOTAL</b>	<b>413.43</b>	<b>334.51</b>	<b>377.6</b>	<b>100</b>	<b>51.6</b>	<b>4257</b>	<b>3909.3</b>	<b>4113.1</b>	<b>100</b>	<b>51.7</b>

year	1971-1972	1985-1986	unite
Total Expenditure	732.11	7969	S L
Ex. on food	377.6	4113	S L
Ex. on others	354.51	3856	S L
%of ex. on food	51.57	51.6	



الوحدة : طن ميزان عرض الفواكة والخضار المصنعة  
1988-1997

supply balance for processed fruits and vegetables Unit : per .T  
1988-1997

المادة product	year reference	1988	1989	1990	1991	1992	1993	1994	1995	1996	1997	avg 88-90	avg 95-97	growth rate	proj 2000	proj 2005
التين المجفف Dry Figs	I - production	4754	4809	4357	4843	4607	5327	4530	6023	5864	4511	4640	5466	0.023681	6002.438	6747.615
	import															
	export															
	net export	0	0	0	0	0	0	0	0	0	0	0	0			
	stock variation															
	consumption	4754	4809	4357	4843	4607	5327	4530	6023	5864	4511	4640	5466	0.023681	6002.438	6747.615
الزبيب Raisin	I - production	10606	7763	6289	14137	11859	8458	11391	13590	19445	12740	8219.333	15258.33	0.0924	21728.67	33801.86
	import		0.09	95		0		0				47.545				
	export		15	18	34	38	18	116	245	133	87	16.5	155	0.377141	557.4998	2761.442
	net export	0	14.91	-77	34	38	18	116	245	133	87	-20.6967	155			
	stock variation															
	consumption	10606	7748.1	6366	14103	11821	8440	11275	13345	19312	12653	8240.03	15103.33	0.090415	21352.11	32915.53
النديس Treacie	I - production	9055	6620	6366	13588	13436	8880	6300	6713	8586	6195	7347	7164.667	-0.003584	7062.515	6936.871
	import															
	export															
	net export	0	0	0	0	0	0	0	0	0	0	0	0			
	stock variation															
	consumption	9055	6620	6366	13588	13436	8880	6300	6713	8586	6195	7347	7164.667	-0.003584	7062.515	6936.871

الوحدة : طن ميزان عرض الفواكة والخضار المصنعة  
1988-1997

supply balance for processed fruits and vegetables Unit : per .T  
1988-1997

المادة material	year Referans	1988	1989	1990	1991	1992	1993	1994	1995	1996	1997	avg 88-90	avg 95-97	growth rate	proj 2000	proj 2005
	I-p-public	3588	2659	3052	373	2616	1234	1576	1061	1931	440	3099.667	1144	-0.132721	647.2334	317.581
	I-p-private									0.7	60.7		30.7			
مربي المشمش Apricot jam	I - production	3588	2659	3052	373	2616	1234	1576	1061	1931.7	500.7	3099.667	1164.467	-0.130521	665.5222	330.7173
	import															
	export															
	net export	0	0	0	0	0	0	0	0	0	0	0	0			
	stock variation															
	consumption	3588	2659	3052	373	2616	1234	1576	1061	1931.7	500.7	3099.667	1164.467	-0.130521	665.5222	330.7173
قمر الدين ried Apricot	I-p-public															
	I-p-private	4147	47	3122	1751	4935	2533	3177	707	5074	180	2438.667	1987	-0.028837	1767.53	1526.96
	I - production	4147	47	3122	1751	4935	2533	3177	707	5074	180	2438.667	1987	-0.028837	1767.53	1526.96
	import															
	export															
	net export	0	0	0	0	0	0	0	0	0	0	0	0			
	stock variation															
	consumption	4147	47	3122	1751	4935	2533	3177	707	5074	180	2438.667	1987	-0.028837	1767.53	1526.96
بازلاء معلبة Canned Peas	I-p-public	2196	1147	434	324	2342	2879	1022	2386	1464	353	1259	1401	0.015384	1489.222	1607.353
	I-p-private	0	0	0	0	3	7	7	7	8	62	0	25.66667			
	I - production	2196	1147	434	324	2345	2886	1029	2393	1472	415	1259	1426.667	0.018021	1532.319	1675.455
	import															
	export															
	net export	0	0	0	0	0	0	0	0	0	0	0	0			
	stock variation															
	consumption	2196	1147	434	324	2345	2886	1029	2393	1472	415	1259	1426.667	0.018021	1532.319	1675.455
ونسروة متنوعة Various Canned	I-p-public	6026	5727	3777	4801	3894	5610	5301	6806	7342	7520	5176.667	7222.667	0.048731	8736.816	11083.39
	I-p-private	586	586	586	592	598	598	3807	8735	11048	11048	586	10277	0.505601	52808.72	408559
	I - production	6612	6313	4363	5393	4492	6208	9108	15541	18390	18568	5762.667	17499.67	0.171966	33013.42	72990.51
	import															
	export															
	net export	0	0	0	0	0	0	0	0	0	0	0	0			
	stock variation															
	consumption	6612	6313	4363	5393	4492	6208	9108	15541	18390	18568	5762.667	17499.67	0.171966	33013.42	72990.51

الوحدة : طن ميزان عرض الفواكة والخضار المصنعة  
1988-1997

supply balance for processed fruits and vegetables Unit : per .T  
1988-1997

المادة material	year Referans	1988	1989	1990	1991	1992	1993	1994	1995	1996	1997	avg 88-90	avg 95-97	growth rate	proj 2000	proj 2005
	I-p-public	6997	8970	5933	8048	8827	2256	6969	9057	7313	8313	7300	8227.667	0.017237	8809.77	9595.652
	I-p-private							3250	4771	7351	7487		6536.333			
رب البندورة Tomato Paste	I - production	6997	8970	5933	8048	8827	2256	10219	13828	14664	15800	7300	14764	0.105853	22079.71	36515.72
	import		0.12	0	0.015	0	0.012	0	0	0	0.005	0.06	0.001667	-0.400663	0.000215	1.66E-05
	export		1239	308	237	176	119	533	157	170	159	773.5	162	-0.200151	66.305	21.70628
	net export	0	1238.9	308	237	176	118.99	533	157	170	159	515.6267	161.9983	-0.152445	83.59534	36.56129
	stock variation															
	consumption	6997	7731.1	5625	7811	8651	2137	9686	13671	14494	15641	6784.373	14602	0.115726	22627.81	39122.81

الوحدة : الف طن  
ميزان عرض الحليب  
١٩٨٨-١٩٩٧

supply balance for Milk  
1988-1997

Unit :

المادة product	المسنوات reference	1988	1989	1990	1991	1992	1993	1994	1995	1996	1997	avg 88-90	avg 95-97	growth rate	proj 2000	proj 2005
	الإنتاج production	1317	1277	1331	1370	1351	1244	1227	1414	1509	1610	1308.333	1511	0.020787	1640.609	1818.364
حليب	استيراد import															
MILK	تصدير export															
	net export	0	0	0	0	0	0	0	0	0	0	0	0			
000-T	التصنيع I-processing	848	789	847	897	873	751	757	872	927	949	828	916	0.0145336	970.4234	1043.022
	الاستهلاك consumption	469	488	484	473	478	493	470	542	582	661	480.3333	595	0.0310555	672.4269	783.5294
حليب بودرة	الإنتاج production															
Powder	استيراد import		976	3891	5343	6348	7020	10975	6811	6796	6103	2433.5	6570	0.1524422	11588.89	23557.96
milk	تصدير export *								60	8	0.45		22.81667			
	net export	0	-976	-3891	-5343	-6348	-7020	-10975	-6751	-6788	-6102.6	-1622.33	-6547.18	0.2205602	-14530.9	-39362.9
Ton	التصنيع I-processing															
	الاستهلاك consumption	0	976	3891	5343	6348	7020	10975	6751	6788	6102.55	1622.333	6547.183	0.2205602	14530.86	39362.92

\* Powder Milk export it is return back

الوحدة : طن - ميزان عرض المنتجات البنية  
١٩٨٨-١٩٩٧

supply balance for dairy products Unit : per T  
1988-1997

المادة product	السنوات years	1988	1989	1990	1991	1992	1993	1994	1995	1996	1997	avg 88-90	avg 95-97	growth rate	proj 2000	proj 2005
	الإنتاج المصنع I - production	13349	12158	12826	13588	13526	8124	9185	11060	11398	12524	12777.67	11660.67	-0.012983	11066.79	10366.79
سمن Ghee	الاستيراد import		861	842	2230	3542	7871	4640	4088	3825	5152	851.5	4355	0.262576	11066.72	35506.43
	تصدير export		23	0	94	161	329	235	170	133	161	11.5	154.6667	0.449582	682.9164	4371.002
	net export	0	-838	-842	-2136	-3381	-7542	-4405	-3918	-3692	-4991	-560	-4200.33	0.333563	-13284.3	-56028.2
	المخزون stock variation															
	الاستهلاك consumption	13349	12996	13668	15724	16907	15666	13590	14978	15090	17515	13337.67	15861	0.025062	17511.81	19818.99
	الإنتاج المصنع I - production	65527	65046	65236	74823	72243	58098	64136	65512	75014	86524	65269.67	75683.33	0.021372	82363.87	91549.79
جبين Cheese	الاستيراد import		1032	1356	406	197	74	132	32.03	18	12	1194	20.67667	-0.439786	2.036552	0.112374
	تصدير export		131	824	313	468	684	727	395	677	1005	477.5	692.3333	0.054505	856.0726	1116.233
	net export	0	-901	-532	-93	271	610	595	362.97	659	993	-477.667	671.6567			
	المخزون stock variation															
	الاستهلاك consumption	65527	65947	65768	74916	71972	57488	63541	65149	74355	85531	65747.33	75011.68	0.019011	80880.45	88866.27
	الإنتاج المصنع I - production	2779	2412	3523	2931	2911	4044	3217	2947	2894	2781	2904.667	2874	-0.001515	2856.622	2835.047
زبدة Butter	الاستيراد import		100	1232	558	1193	2059	2106	1413	1895	1232	666	1513.333	0.124405	2418.946	4347.512
	تصدير export		0	0	0	7	11	21	53	58	48	0	53			
	net export	0	-100	-1232	-558	-1186	-2048	-2085	-1360	-1837	-1184	-444	-1460.33	0.185406	-2883.5	-6749.24
	المخزون stock variation															
	الاستهلاك consumption	2779	2512	4755	3489	4097	6092	5302	4307	4731	3965	3348.667	4334.333	0.037546	5022.86	6039.307

الوحدة : طن - ميزان عرض المنتجات البنية  
١٩٨٨-١٩٩٧

supply balance for dairy products Unit : per T  
1988-1997

المادة material	year	1988	1989	1990	1991	1992	1993	1994	1995	1996	1997	avg 88-90	avg 95-97	growth rate	proj 2000	proj 2005
	I - production	17673	12211	11152	9627	9783	11757	12200	9195	5723	5143	10996.67	5433	-0.095822	3631.249	2194.454
	I - p - public	17673	12211	11152	9627	9783	11757	12200	9195	5723	5143	10996.67	5433	-0.095822	3631.249	2194.454
	I - p - praivet	9.5	9.5	9.5	9.5	10.5	10.5	117	645	1170	1789	9.5	1479.5	1.056832	26479.52	974773.8
لبن Yogurt	I - production	17682.5	12221	11162	9636.5	9793.5	11768	12317	9840	6893	6932	11006.17	6912.5	-0.064287	5299.148	3801.191
	import															
	export															
	net export															
	stock variation															
	consumption	17682.5	12221	11162	9636.5	9793.5	11768	12317	9840	6893	6932	11006.17	6912.5	-0.064287	5299.148	3801.191
	I - p - public	2030	1874	1941	1842	856	2328	2711	2418	798	853	1885.667	825.5	-0.11131	514.8946	285.4104
	I - p - praivet	0	0	0	0	1	28	714	1027	1294	1379	0	1336.5			
لبنة Labne	I - production	2030	1874	1941	1842	856	2356	3425	3445	2092	2232	1885.667	2162	0.019728	2337.724	2577.598
	import															
	export															
	net export															
	stock variation															
	consumption	2030	1874	1941	1842	856	2356	3425	3445	2092	2232	1885.667	2162	0.019728	2337.724	2577.598
	I - p - public	10866	12273	13055	12118	10979	14380	15783	13819	14042	13348	12482	13695	0.013337	14440.36	15429.36
	I - p - praivet															
حليب معقم ومبستر Sterilised	I - production															
	import															
	export															
	net export															
	stock variation															
	consumption															

1 - Number of Agricultural holders and Average are of holding by Mohafazat,(1970-1981-1994)

Mohafazat	Number of Agricultural holders			Average area of holding								
				cultivable lands			uncultivable lands			total area		
	1970	1981	1994	1970	1981	1994	1970	1981	1994	1970	1981	1994
Damascus	4512	5047	7367	65.6	63.7	29.1	3.8	4.7	0.6	69.4	69	30.1
Da-Rural-area	44392	32371	41492	36.4	35.6	32.5	2	2.7	0.6	38.5	38.8	33.7
Aleppo	95401	85927	96832	137.1	101.6	122.3	5.3	7.5	0.5	142.4	109.5	123.3
Homs	45828	40107	50370	112.5	76.3	80.6	13.2	4.2	1.3	125.7	82.6	83.6
Hama	52706	51063	65909	88.3	65.8	65.7	11.8	6.5	1.6	100.1	73.3	68.5
Latakia	44803	36525	48208	22.4	16	19.7	1.3	1.3	0.1	24.5	46.8	19.8
Deir-er-Zor	30184	29525	42042	90.3	32.1	51.4	4.7	3.7	1.6	95	36	53.1
Idleb	44602	46985	55654	63	47.8	53.6	3.9	1.2	0.7	66.9	51.7	54.6
Al-Hasaeh	50540	55162	61089	357.3	184.9	182.2	11.7	6.1	0.6	369	191.3	182.9
Al-Rakka	26815	21598	27824	213.9	215.8	278.1	6.8	11.3	0.6	220.6	227.6	279.2
Al-Sweida	16820	15792	23286	115.2	54.5	72.9	6.8	4.9	2.3	122	79.8	75.6
Dar'a	27355	20857	30432	125.7	88.6	68.8	6.4	10.7	1.2	132	99.5	70.3
Trrtous	42165	42278	58773	25.6	19.3	18.2	1.3	1.3	0.1	26.9	20.6	18.3
Qunetira	1776	2264	4379	65	39.9	34.8	21.3	10.9	4.9	86.3	62.8	48.8
Total	527899	485501	613657	111.5	75.9	83.2	6.2	5.5	0.9	117.7	84.9	84.7

2 - Land use, 1987-1997 (thousand ha)

Year	Cultivable Land cultivated land					Uncultivable Land						Steppe & pastures	Forest	Total area
	Irrigated	Non - irrigated	Total	Fallow	Total	Un cultivated	Total	Building & public road	Marshes & Lakes	Other Rocky & Sandy Land	Total			
1987	654	3397	4041	1589	5630	503	6133	423	117	3034	3574	8277	534	18518
1988	650	3647	4297	1263	5560	505	6065	504	122	3053	3679	8231	543	18518
1989	670	4727	5397	106	5503	526	6029	577	136	3069	3782	7989	718	18518
1990	693	4773	5466	160	5626	523	6149	587	136	3054	3777	7869	723	18518
1991	788	4065	4853	723	5576	503	6079	599	137	3036	3772	7936	731	18518
1992	906	4215	5121	433	5554	491	6045	597	140	3022	3759	8059	655	18518
1993	1013	3926	4939	487	5426	513	5939	602	138	3037	3777	8216	586	18518
1994	1082	3770	4852	635	5487	484	5971	606	138	3017	3761	8299	487	18518
1995	1089	3893	4982	520	5502	477	5979	611	139	3009	3759	8287	493	18518
1996	1126	3516	4642	828	5470	478	5948	612	137	2991	3740	8320	510	18518
1997	1168	3636	4804	718	5522	465	5987	611	138	2978	3727	8283	521	18518

%of irri ' non irrig and fallow from total cultivated land

Year	Cultivable Land cultivated land		Fallow
	Irrigated	Non - irrigated	
1987	0.12	0.6	0.28
1988	0.12	0.66	0.23
1989	0.12	0.86	0.02
1990	0.12	0.85	0.03
1991	0.14	0.73	0.13
1992	0.16	0.76	0.08
1993	0.19	0.72	0.09
1994	0.2	0.69	0.12
1995	0.2	0.71	0.09
1996	0.21	0.64	0.15
1997	0.21	0.66	0.13

### 3 - Cultivable and under crop area by sectors, 1987-1997 (thousand ha)

YEARS	Cultivable area				Under Crop			
	Public	Cooperative	Private	Total	Public	Cooperati	Private	Total
1987	134	2035	3964	6133	94	1210	2737	4041
1988	142	2075	3848	6065	76	1267	2954	4297
1989	144	2092	3793	6029	102	1548	3747	5397
1990	83	2224	3842	6149	58	2015	3393	5466
1991	73	2287	3719	6079	58	1935	2860	4853
1992	77	2096	3872	6045	56	2096	2969	5121
1993	71	2370	3498	5939	51	2039	2849	4939
1994	59	2429	3483	5971	43	2058	2751	4852
1995	91	2427	3460	5978	64	2242	2636	4982
1996	94	2427	3427	5948	60	2089	2493	4642
1997	95	2449	3443	5987	60	2277	2467	4804

**4 - Distribution of land by mohafazat which owned by cooperative by mohafazat, 1997 (donem)**  
**1997**

Mohafazat	Total area	cultivated (under crops )			cultivated(under tree)			Number of coop.
		irigated	non-irigated	Total	irigated	non-irigated	Total	
Damascus	4579	1448	2082	3530	856	193	1049	59
Da-Rural-area	0	0	0	0	0	0	0	0
Aleppo	43669	1118	36066	37184	180	6305	6485	374
Homs	6475	452	5695	6147	182	146	328	62
Hama	20970	866	19173	20039	13	918	931	109
Latakia	497	0	94	94	308	95	403	35
Deir-er-Zor	0	0	0	0	0	0	0	0
Idleb	13511	0	10585	10585	0	2916	2916	105
Al-Hasaeh	13625	713	12860	13573	0	52	52	16
Al-Rakka	12136	1330	10806	12136	0	0	0	75
Al-Sweida	5695	0	3805	3805	0	1890	1890	11
Dar'a	1362	30	1312	1343	20	0	20	8
Trrtous	834	193	450	643	0	191	191	31
Qunetira	0	0	0	0	0	50	50	1
<b>Total</b>	<b>123353</b>	<b>6150</b>	<b>102928</b>	<b>109079</b>	<b>1559</b>	<b>12756</b>	<b>14315</b>	<b>886</b>

### 5 - Average area of holdings in co-operatives by mohafazat (1970, 1981, 1994) (donem)

Total

Mohafazat	Average area of holding								
	cultivable lands			uncultivable lands			total area		
	1970	1981	1994	1970	1981	1994	1970	1981	1994
Damascus	65.6	63.7	29.1	3.8	4.7	0.6	69.4	69	30.1
Da-Rural-area	36.4	35.6	32.5	2	2.7	0.6	38.5	38.8	33.7
Aleppo	137.1	101.6	122.3	5.3	7.5	0.5	142.4	109.5	123.3
Homs	112.5	76.3	80.6	13.2	4.2	1.3	125.7	82.6	83.6
Hama	88.3	65.8	65.7	11.8	6.5	1.6	100.1	73.3	68.5
Latakia	22.4	16	19.7	1.3	1.3	0.1	24.5	46.8	19.8
Deir-er-Zor	90.3	32.1	51.4	4.7	3.7	1.6	95	36	53.1
Idleb	63	47.8	53.6	3.9	1.2	0.7	66.9	51.7	54.6
Al-Hasaeh	357.3	184.9	182.2	11.7	6.1	0.6	369	191.3	182.9
Al-Rakka	213.9	215.8	278.1	6.8	11.3	0.6	220.6	227.6	279.2
Al-Sweida	115.2	54.5	72.9	6.8	4.9	2.3	122	79.8	75.6
Dar'a	125.7	88.6	68.8	6.4	10.7	1.2	132	99.5	70.3
Trrtous	25.6	19.3	18.2	1.3	1.3	0.1	26.9	20.6	18.3
Qunetira	65	39.9	34.8	21.3	10.9	4.9	86.3	62.8	48.8
Total	111.5	75.9	83.2	6.2	5.5	0.9	117.7	84.9	84.7

**6 - Land holders in cooperative, no. of parcels, and area of the holdings by land use and size class, 1994 (done 1994)**

Holding total Area classes	No. of Holders	No. of Parcels	Total area	Cultivable Land					Uncultivable	Total cultivable	Uncultivable	Steppe & Pastures	Forest
				Cultivated			Uncultivated	Total cultivable					
				Irrigated	Non-irri	Fallow							
<b>1</b>	<b>3610</b>	<b>4102</b>	<b>4733</b>	<b>2602</b>	<b>1769</b>	<b>54</b>	<b>124</b>	<b>4548</b>	<b>28</b>	<b>6</b>	<b>150</b>		
<b>2</b>	<b>19670</b>	<b>34981</b>	<b>66585</b>	<b>29597</b>	<b>33434</b>	<b>1148</b>	<b>1400</b>	<b>65580</b>	<b>509</b>	<b>179</b>	<b>317</b>		
<b>5</b>	<b>35460</b>	<b>88450</b>	<b>250115</b>	<b>101041</b>	<b>135012</b>	<b>5957</b>	<b>4722</b>	<b>246731</b>	<b>2340</b>	<b>515</b>	<b>529</b>		
<b>10</b>	<b>57354</b>	<b>184288</b>	<b>803521</b>	<b>307799</b>	<b>439613</b>	<b>26238</b>	<b>16496</b>	<b>790145</b>	<b>10167</b>	<b>1928</b>	<b>1281</b>		
<b>20</b>	<b>74697</b>	<b>266957</b>	<b>2112645</b>	<b>856580</b>	<b>1095538</b>	<b>86823</b>	<b>41032</b>	<b>2079974</b>	<b>25150</b>	<b>6025</b>	<b>1496</b>		
<b>40</b>	<b>37408</b>	<b>146121</b>	<b>1787427</b>	<b>576345</b>	<b>1032158</b>	<b>106131</b>	<b>38348</b>	<b>1752982</b>	<b>25386</b>	<b>8032</b>	<b>1026</b>		
<b>60</b>	<b>40551</b>	<b>159314</b>	<b>3038633</b>	<b>799992</b>	<b>1914905</b>	<b>209476</b>	<b>59632</b>	<b>2984005</b>	<b>36967</b>	<b>16235</b>	<b>1425</b>		
<b>100</b>	<b>26204</b>	<b>103385</b>	<b>3128939</b>	<b>642703</b>	<b>2094959</b>	<b>267288</b>	<b>57232</b>	<b>3062182</b>	<b>38986</b>	<b>26509</b>	<b>1263</b>		
<b>150</b>	<b>15825</b>	<b>62977</b>	<b>2634797</b>	<b>530690</b>	<b>1800712</b>	<b>211860</b>	<b>44501</b>	<b>2587763</b>	<b>29136</b>	<b>17049</b>	<b>849</b>		
<b>200</b>	<b>16814</b>	<b>67859</b>	<b>3931369</b>	<b>670584</b>	<b>2762563</b>	<b>363934</b>	<b>64825</b>	<b>3861907</b>	<b>43116</b>	<b>25317</b>	<b>1029</b>		
<b>300</b>	<b>11497</b>	<b>51663</b>	<b>4153096</b>	<b>648644</b>	<b>2935153</b>	<b>405885</b>	<b>72050</b>	<b>4061733</b>	<b>57064</b>	<b>33161</b>	<b>1138</b>		
<b>500</b>	<b>4409</b>	<b>19982</b>	<b>2794958</b>	<b>390763</b>	<b>2013909</b>	<b>266489</b>	<b>56876</b>	<b>2728036</b>	<b>38895</b>	<b>27855</b>	<b>170</b>		
<b>1000</b>	<b>1396</b>	<b>5311</b>	<b>1868498</b>	<b>215079</b>	<b>1372085</b>	<b>159107</b>	<b>69063</b>	<b>1815334</b>	<b>28239</b>	<b>24717</b>	<b>209</b>		
<b>3000</b>	<b>195</b>	<b>1059</b>	<b>1069670</b>	<b>140148</b>	<b>853720</b>	<b>34472</b>	<b>24975</b>	<b>1053316</b>	<b>6937</b>	<b>9270</b>	<b>150</b>		
<b>Total</b>	<b>345090</b>	<b>1196449</b>	<b>27644986</b>	<b>5912567</b>	<b>18485530</b>	<b>2144862</b>	<b>551276</b>	<b>27094236</b>	<b>342920</b>	<b>196798</b>	<b>11032</b>		

**7 - Total land holders, no. of parcels, and area of the holdings by land use and size class, 1994 (donem)**

Holding total Area class	No. of Holdings	No. of Parcels	Total area	Cultivable Land					Unculti- vable	Steppe & Pastures	Forest
				Cultivated			Uncultivat ed	Total cult- ivable			
				Irrigated	Non- irri	Fallow					
<b>1</b>	8749	9887	11572	6225	4319	149	348	1141	78	19	434
<b>2</b>	39847	65763	134683	58834	67995	2404	3545	132778	993	323	589
<b>5</b>	61851	138904	438483	171608	241738	9926	10040	433312	3543	800	828
<b>10</b>	91421	263496	1294481	472129	732023	41886	29374	1275412	14083	3011	1975
<b>20</b>	111034	365163	3171613	1174233	1749544	135220	66967	3125964	34246	8995	2408
<b>40</b>	58133	207553	2824878	841491	1702128	173576	59900	2777095	33978	12191	1614
<b>60</b>	64454	233754	4927338	1242126	3189382	326600	92347	4850455	51790	22875	2218
<b>100</b>	43340	156477	5303319	1171651	3541105	411095	88301	5212152	55242	34117	1808
<b>150</b>	25018	92375	4274339	930207	2894625	319926	65801	4210559	39856	22588	1336
<b>200</b>	26979	101704	6490198	1248328	4519243	528364	95988	6391923	61147	35418	1710
<b>300</b>	19175	79229	7226375	1304018	5087536	593739	110601	7095894	81188	47554	1739
<b>500</b>	8066	33679	5428245	878000	3954359	401832	86901	5321092	61873	44282	998
<b>1000</b>	2461	9480	3656269	520930	2733540	239333	95284	3589087	36339	30577	266
<b>3000</b>	306	1510	1693667	218799	1348345	64230	33448	1664822	12212	15650	983
<b>Total</b>	560834	1758974	46875460	10238579	31765882	3248280	838845	46081686	486568	278400	18906

**8 - Land holders in cooperative, no. of parcels, and area of the holdings by land use and size class, 1994 (% on total holders values)**

Holding total Area classes	No. of Holders	No. of Parcels	Total area	Cultivable Land					Uncultivat- ed	Total cult- ivable	Unculti- vable	Steppe & Pastures	Forest
				Cultivated			Fallow	Total cult- ivable					
				Irrigated	Non- irri	Fallow							
<b>1</b>	41.26	41.49	40.90	41.80	40.96	36.24	35.63	398.60	35.90	31.58	34.56		
<b>2</b>	49.36	53.19	49.44	50.31	49.17	47.75	39.49	49.39	51.26	55.42	53.82		
<b>5</b>	57.33	63.68	57.04	58.88	55.85	60.01	47.03	56.94	66.05	64.38	63.89		
<b>10</b>	62.74	69.94	62.07	65.19	60.05	62.64	56.16	61.95	72.19	64.03	64.86		
<b>20</b>	67.27	73.11	66.61	72.95	62.62	64.21	61.27	66.54	73.44	66.98	62.13		
<b>40</b>	64.35	70.40	63.27	68.49	60.64	61.14	64.02	63.12	74.71	65.88	63.57		
<b>60</b>	62.91	68.15	61.67	64.41	60.04	64.14	64.57	61.52	71.38	70.97	64.25		
<b>100</b>	60.46	66.07	59.00	54.85	59.16	65.02	64.81	58.75	70.57	77.70	69.86		
<b>150</b>	63.25	68.18	61.64	57.05	62.21	66.22	67.63	61.46	73.10	75.48	63.55		
<b>200</b>	62.32	66.72	60.57	53.72	61.13	68.88	67.53	60.42	70.51	71.48	60.18		
<b>300</b>	59.96	65.21	57.47	49.74	57.69	68.36	65.14	57.24	70.29	69.73	65.44		
<b>500</b>	54.66	59.33	51.49	44.51	50.93	66.32	65.45	51.27	62.86	62.90	17.03		
<b>1000</b>	56.72	56.02	51.10	41.29	50.19	66.48	72.48	50.58	77.71	80.84	78.57		
<b>3000</b>	63.73	70.13	63.16	64.05	63.32	53.67	74.67	63.27	56.80	59.23	15.26		
<b>Total</b>	61.53	68.02	58.98	57.75	58.19	66.03	65.72	58.80	70.48	70.69	58.35		

9 - Agricultural holdings , no. of parcels and total area by land use, mohafazat and agr. settlement zones, 1994.(donem)

Mohafazat& Agr.Stabili. Zones	No. of Holdings	No. of Parcels	Total area	Cultivable Land					Uncultivat- ed	Total cult- ivable	Unculti- vable	Steppe & Pastures	Forest
				Cultivated			Total cult- ivable						
				Irrigated	Non- irri	Fallow							
<b>Total Country</b>	<b>560836</b>	<b>1758974</b>	<b>46875460</b>	<b>10238579</b>	<b>31765882</b>	<b>3248280</b>	<b>838845</b>	<b>46091586</b>	<b>486568</b>	<b>278400</b>	<b>18906</b>		
First	302288	1038163	14725692	3341562	10173664	670180	252908	14438314	139802	139558	8018		
Second	125517	393251	16920495	3008682	12182810	1315993	221849	16729334	142517	44087	4557		
Third	34683	103050	5427612	756569	3802357	680686	83896	5323508	69493	33144	1467		
Forth	27974	74535	4096514	735844	2892917	315182	73458	4017401	46089	31745	1278		
Fifth	70374	149973	5705155	2395925	2714136	266240	206735	5583036	88666	29865	3588		
<b>Damascus</b>	<b>6606</b>	<b>14426</b>	<b>198683</b>	<b>59044</b>	<b>99326</b>	<b>12003</b>	<b>21597</b>	<b>191970</b>	<b>3825</b>	<b>2343</b>	<b>545</b>		
Third	1220	2563	39322	12557	19478	1108	4557	37700	1091	355	176		
Forth	5386	11863	159361	46487	79848	10895	17040	154270	2734	1987	369		
<b>Damascus-Rural</b>	<b>36249</b>	<b>101184</b>	<b>1220408</b>	<b>455509</b>	<b>428425</b>	<b>129562</b>	<b>163775</b>	<b>1177271</b>	<b>23340</b>	<b>16265</b>	<b>3532</b>		
First	7372	27827	235789	76119	82568	16890	50222	225799	6803	3036	151		
Second	6088	21298	240077	60100	115614	27382	24901	227997	6630	5062	388		
Third	4693	11715	148599	54383	58280	15818	16743	145224	2044	1098	233		
Forth	7241	18666	18/8913	55197	96251	18188	14372	184008	2619	1792	494		
Fifth	10855	21679	407031	209710	75713	51284	57537	394244	5245	5276	2266		
<b>Homs</b>	<b>45254</b>	<b>146167</b>	<b>3781953</b>	<b>513383</b>	<b>2597327</b>	<b>404451</b>	<b>132220</b>	<b>3647381</b>	<b>60611</b>	<b>71270</b>	<b>2691</b>		
First	28528	95815	1166801	272561	724873	70986	28737	1097157	28880	39449	1315		
Second	8062	22162	817053	95804	607188	89462	12771	805225	6831	4559	438		
Third	4134	13810	583116	53538	389492	101884	8475	553389	14066	14802	859		
Forth	2275	9709	534933	17890	404803	89595	8428	520716	4984	9233	0		
Fifth	2255	4670	680054	73591	470971	52525	73809	670896	5851	3228	79		
<b>Hama</b>	<b>59604</b>	<b>185738</b>	<b>4082410</b>	<b>1017217</b>	<b>2438955</b>	<b>410884</b>	<b>47719</b>	<b>3914775</b>	<b>94137</b>	<b>72769</b>	<b>729</b>		
First	40314	128669	1449279	767149	558146	52832	14705	1392832	21583	34370	494		
Second	14410	41103	1473381	183919	1098489	147928	15772	1446108	17019	10116	138		
Third	3398	11250	759362	49606	512797	152464	10678	725545	24856	8954	7		
Forth	1284	4118	355237	15883	240946	51292	5225	313346	28863	12938	90		
Fifth	197	598	45148	660	28577	6367	1339	36943	1816	6389	0		
<b>Tartous</b>	<b>57378</b>	<b>276395</b>	<b>1052252</b>	<b>209916</b>	<b>791932</b>	<b>33499</b>	<b>11290</b>	<b>1046637</b>	<b>3396</b>	<b>397</b>	<b>1822</b>		
First	57378	276395	1052252	209916	791932	33499	11290	1046637	3396	397	1822		
<b>Lattakia</b>	<b>46811</b>	<b>155723</b>	<b>927517</b>	<b>299371</b>	<b>559265</b>	<b>31163</b>	<b>31239</b>	<b>921038</b>	<b>4466</b>	<b>830</b>	<b>1183</b>		
First	46811	155723	927517	299371	559265	31163	31239	921038	4466	830	1183		
<b>Idleb</b>	<b>52757</b>	<b>162186</b>	<b>2882347</b>	<b>378608</b>	<b>2334719</b>	<b>86287</b>	<b>30652</b>	<b>2830266</b>	<b>40086</b>	<b>11094</b>	<b>901</b>		
First	44237	136114	1827763	299322	1457411	29270	18617	1804620	17652	4827	664		
Second	6756	20586	779837	53557	672341	27936	5988	759822	17197	2581	237		
Third	1764	5486	274744	25728	204966	29081	6047	265822	5236	3686	0		

10 - Agricultural holdings , no. of parcels and total area by land use, mohafazat and agr. settlement zones, 1994.(donem) (follows)

Mohafazat& Agr.Stabili. Zones	No. of Holdings	No. of Parcels	Total area	Cultivable Land					Unculti- vable	Steppe & Pastures	Forest
				Cultivated			Uncultivat- ed	Total culti- vable			
				Irrigated	Non- irri	Fallow					
<b>Aleppo</b>	<b>88051</b>	<b>293345</b>	<b>10765258</b>	<b>1698961</b>	<b>8506381</b>	<b>389964</b>	<b>89243</b>	<b>10684549</b>	<b>45236</b>	<b>31444</b>	<b>4029</b>
First	38182	121328	3068103	454441	2502143	47003	36891	3040478	14512	11881	1232
Second	36867	129033	5480597	875725	4373474	157308	34546	5441053	23561	13316	2657
Third	10475	32506	1620926	262575	1197947	138724	12386	1611632	5216	3946	132
Forth	2588	10479	595639	106221	432817	46928	5420	591386	1946	2299	8
<b>Al-Rakka</b>	<b>23528</b>	<b>46036</b>	<b>6568552</b>	<b>1428997</b>	<b>4854660</b>	<b>210611</b>	<b>47776</b>	<b>6542053</b>	<b>13966</b>	<b>11308</b>	<b>1225</b>
Second	4375	8569	2568185	495245	2008437	55898	4412	2563992	2199	1672	322
Third	1666	3339	974829	112219	800087	54607	5226	972139	2649	2	39
Forth	3902	9292	1212516	218775	916490	54804	16972	1207041	2820	2502	153
Fifth	13585	24837	1813027	602758	1129655	45303	21168	1798884	6299	7133	711
<b>Deir-ezzor</b>	<b>38618</b>	<b>89697</b>	<b>2052060</b>	<b>1167537</b>	<b>699526</b>	<b>75342</b>	<b>41766</b>	<b>1984171</b>	<b>62862</b>	<b>4630</b>	<b>397</b>
Forth	1214	1709	377104	106403	267494	1960	1174	377031	73	0	0
Fifth	37403	87988	1674956	1061134	432032	73382	40592	1607140	62789	4630	397
<b>Al-Hasakeh</b>	<b>52042</b>	<b>92518</b>	<b>9517048</b>	<b>2700880</b>	<b>6189199</b>	<b>544440</b>	<b>46098</b>	<b>9480617</b>	<b>31126</b>	<b>4854</b>	<b>451</b>
First	23574	42718	4055191	875405	2880367	287883	5333	4049088	5236	707	160
Second	15620	26314	3101512	1050033	1883116	130284	21912	3085345	15841	209	117
Third	3163	6312	658483	160719	429943	63556	2317	556535	1914	27	7
Forth	3686	7323	625711	166929	427095	25238	4247	623509	1467	702	33
Fifth	6000	9851	1076154	447795	568678	37379	12290	1066142	6667	3210	135
<b>Al-Swida</b>	<b>22013</b>	<b>88519</b>	<b>1664486</b>	<b>11992</b>	<b>1059252</b>	<b>409447</b>	<b>123944</b>	<b>1604190</b>	<b>51504</b>	<b>7859</b>	<b>933</b>
First	5748	18709	337350	3447	235600	49280	38533	326860	7957	1827	706
Second	15494	65341	1241360	7602	775571	330556	82787	1196516	38648	5979	227
Third	752	4400	82714	935	46558	28089	2180	77762	4899	53	0
Forth	19	68	3052	8	1522	1522	0	3052	0	0	0
<b>Dara</b>	<b>28086</b>	<b>93650</b>	<b>1975042</b>	<b>282799</b>	<b>1103885</b>	<b>504365</b>	<b>41831</b>	<b>1932880</b>	<b>33130</b>	<b>8798</b>	<b>234</b>
First	6306	21476	418202	69466	278338	45012	7201	400017	10434	7694	57
Second	17845	58845	1218493	186696	648579	349239	18762	1203276	14591	592	34
Third	3417	11669	285519	24310	142809	95356	15287	277762	7523	220	14
Forth	441	1309	44044	2049	25651	14759	581	43040	582	292	130
Fifth	78	350	8784	276	8508	0	0	8784	0	0	0
<b>Quneitra</b>	<b>3838</b>	<b>13390</b>	<b>187444</b>	<b>14365</b>	<b>103021</b>	<b>6262</b>	<b>10140</b>	<b>133788</b>	<b>18883</b>	<b>34539</b>	<b>234</b>
First	3838	13390	187444	14365	103021	6262	10140	133788	18883	34539	234