



Food and Agriculture
Organization of the
United Nations

Complications of Designing Tenure Rights for Highly Migratory Fisheries: Eastern Pacific Tropical Tuna Fisheries



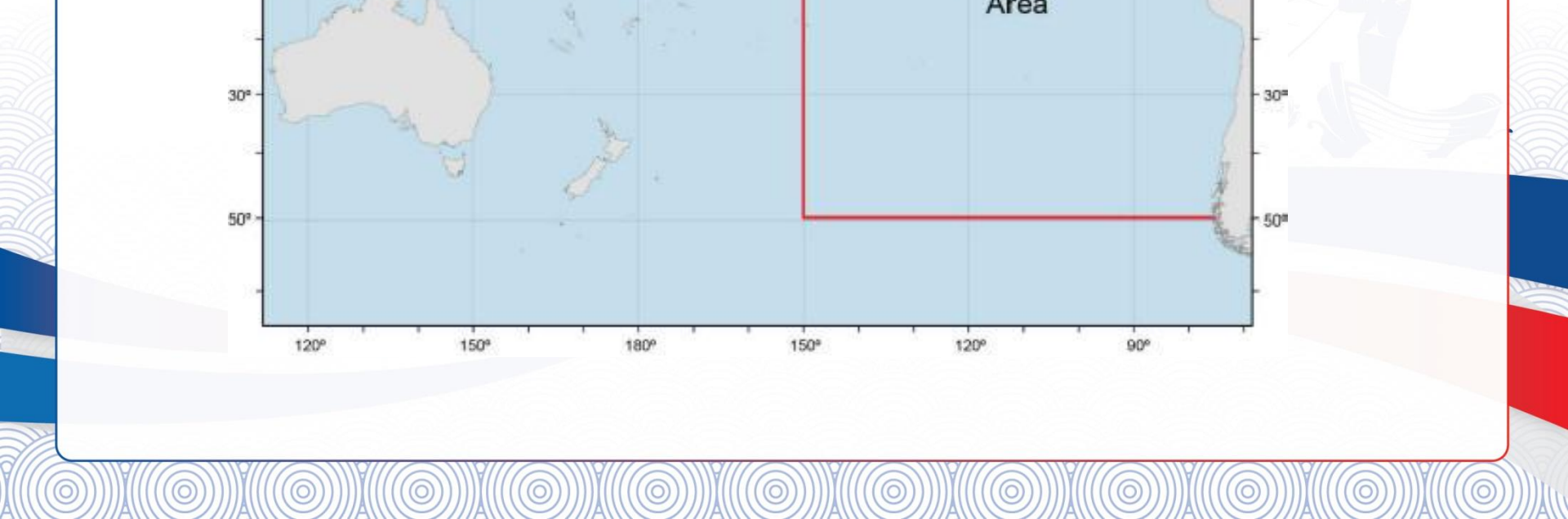
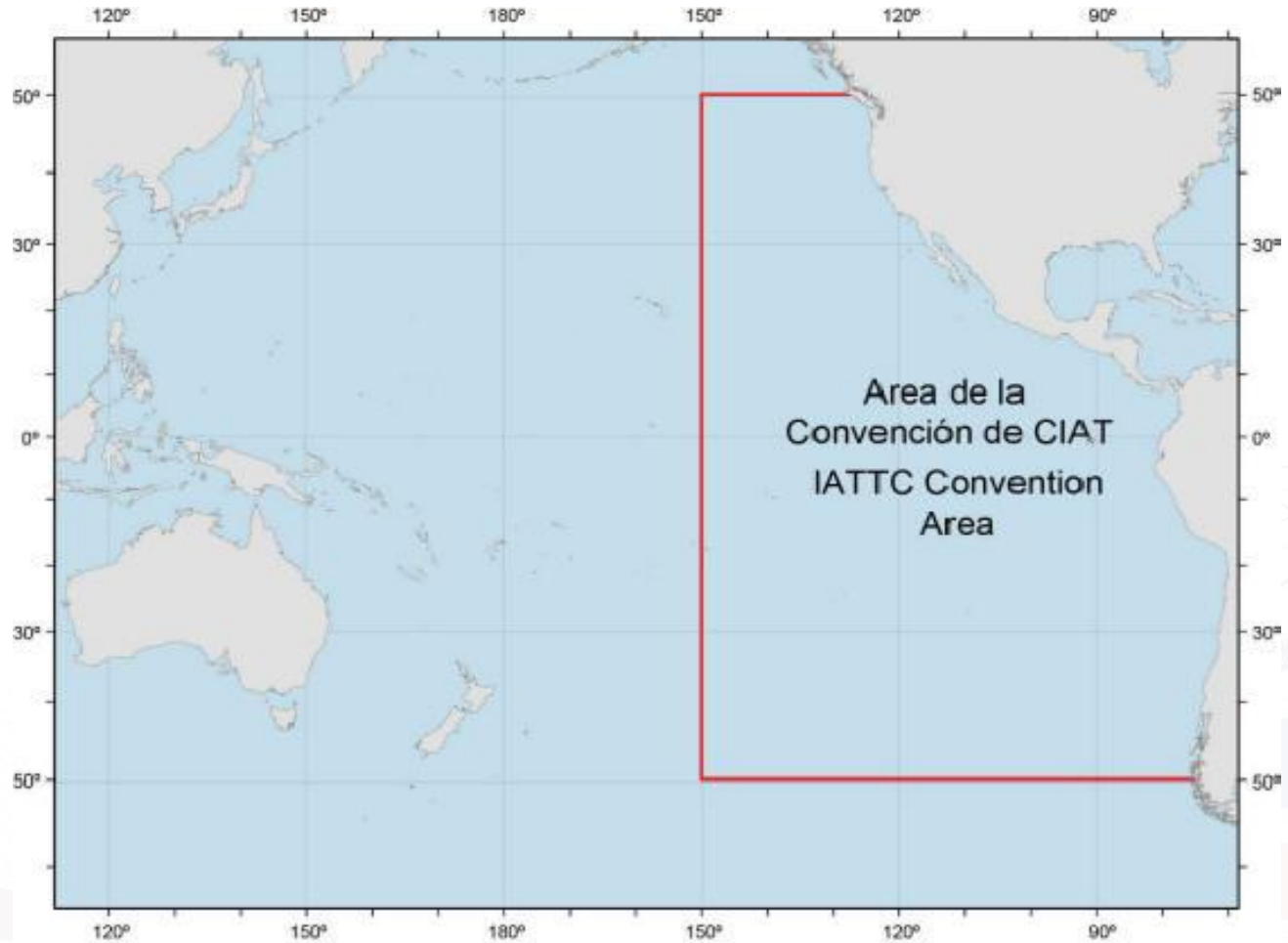
Vishwanie Maharaj

Lead Economist, Oceans

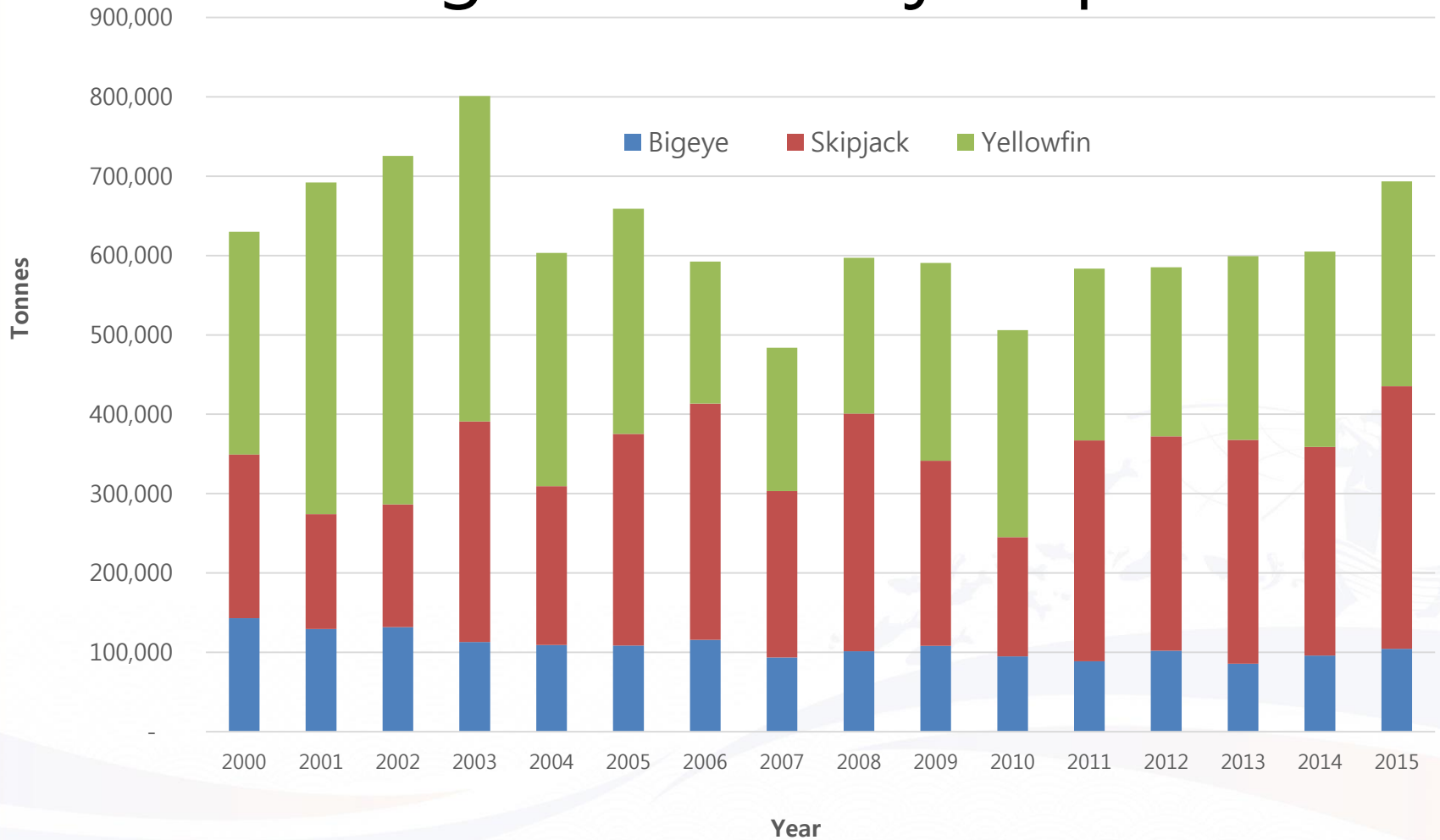
World Wildlife Fund-US



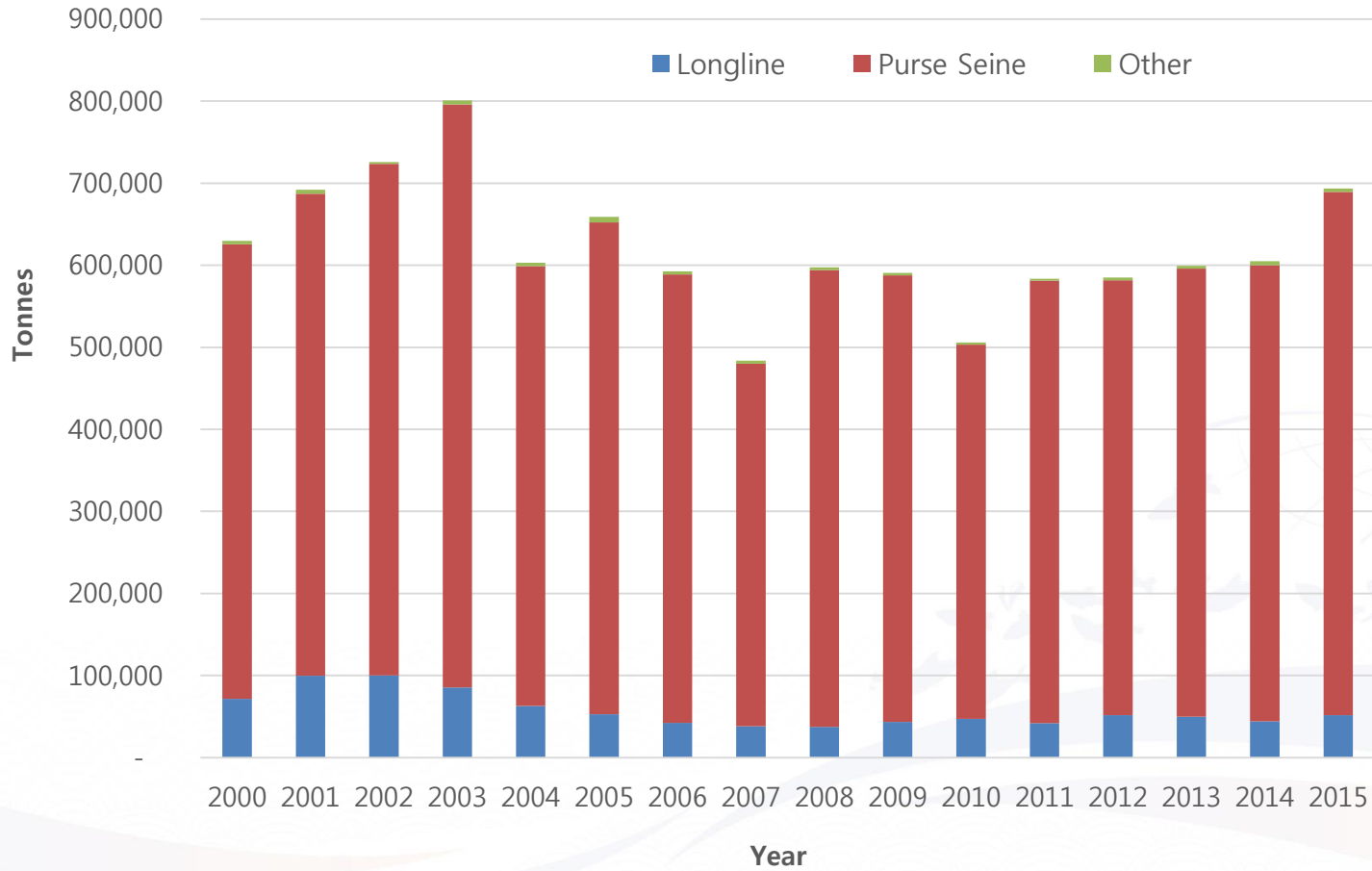
Eastern Pacific Fisheries-IATTC



Landings of the major species



Landings by Gear Type



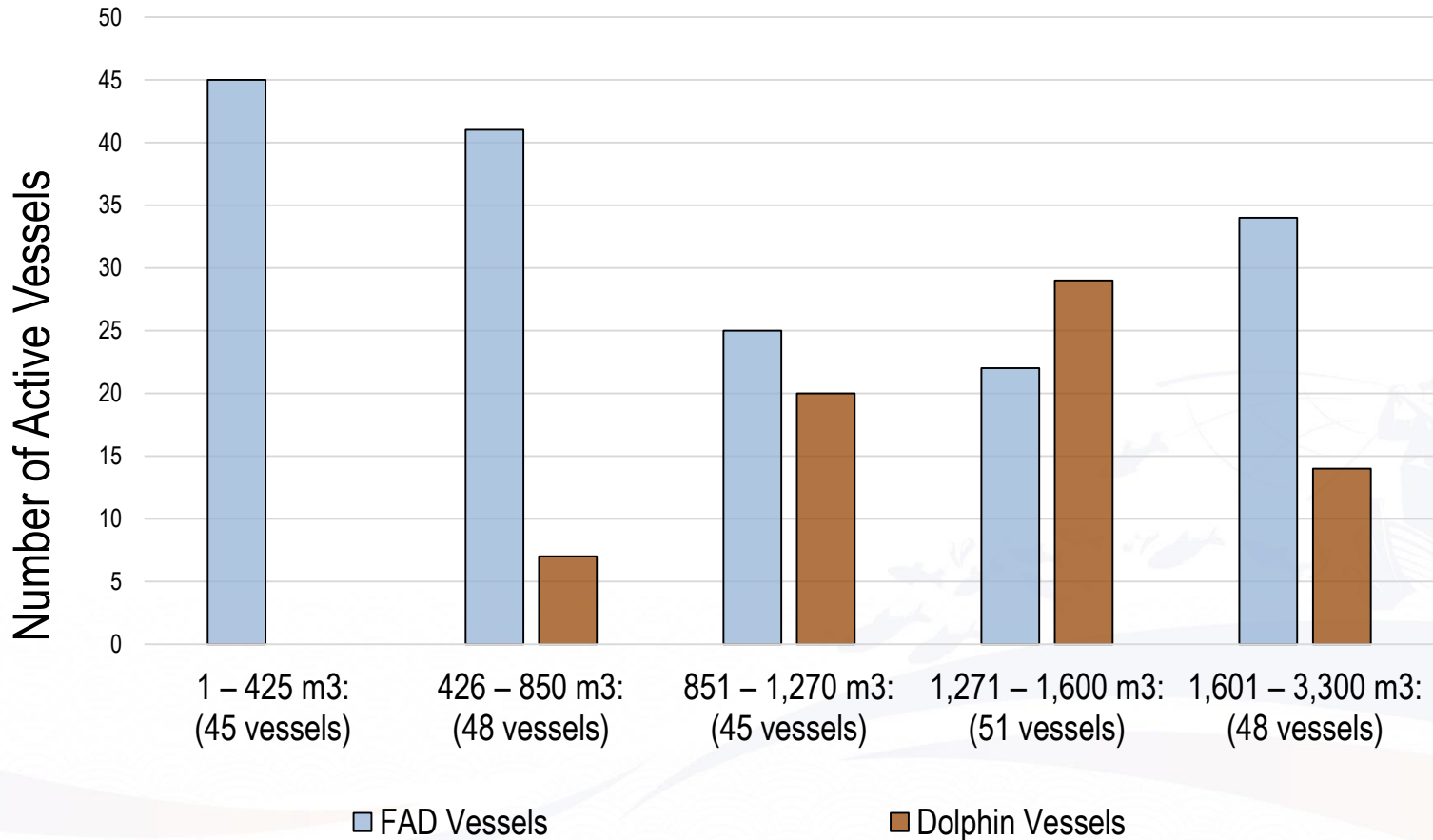
Industrial Longliners



Industrial Purse Seiners



Distribution of Dolphin and FAD Vessels by Capacity Bins in 2016



Current Measures

- **Purse Seine Sector**

- Closed Vessel Register
- Transferable Hold Capacity
- Closed Area
- 72 day seasonal closure
- 100% observer coverage – vessels > 425m³

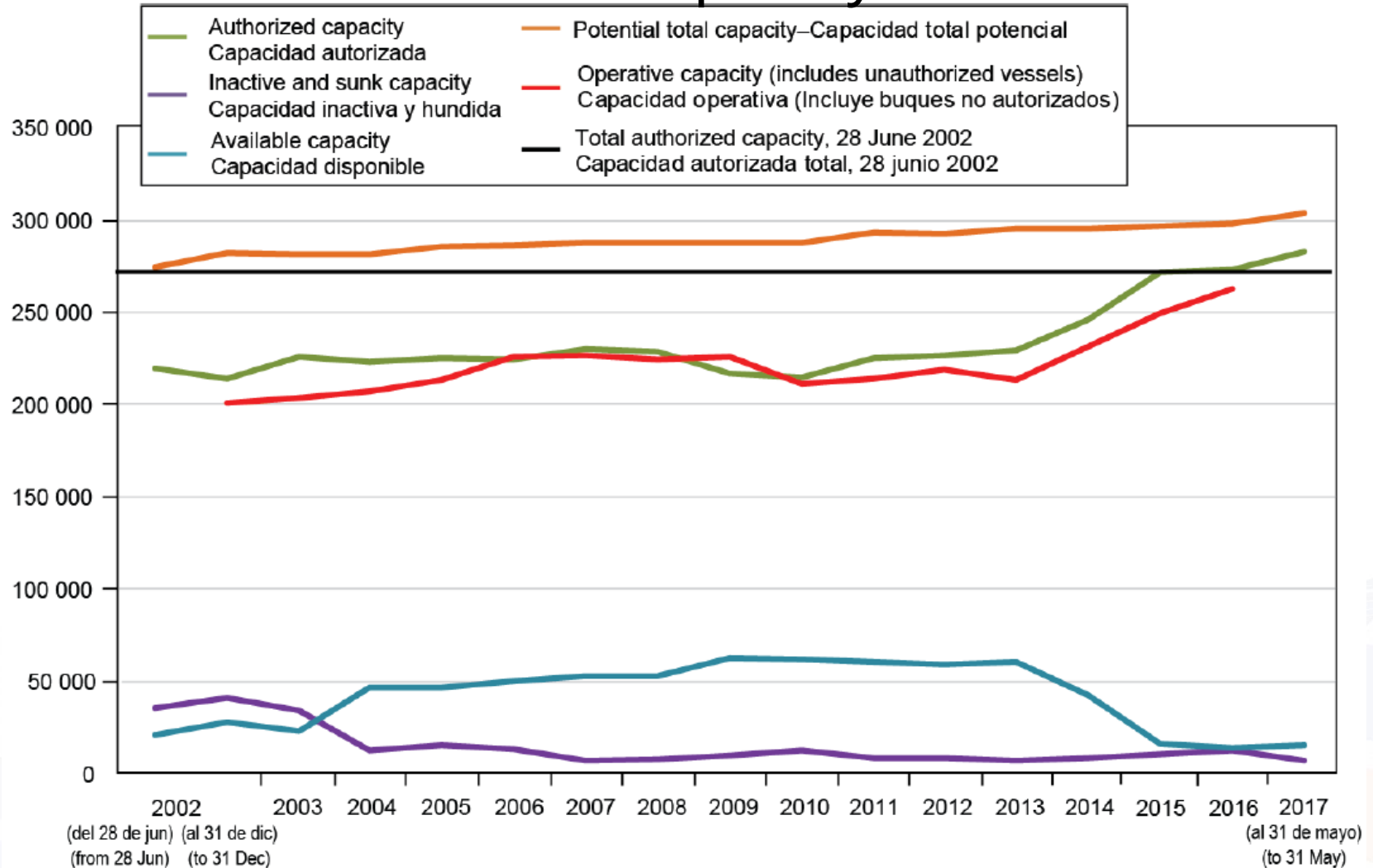
- **Longline**

- Country limits for bigeye tuna

Problems

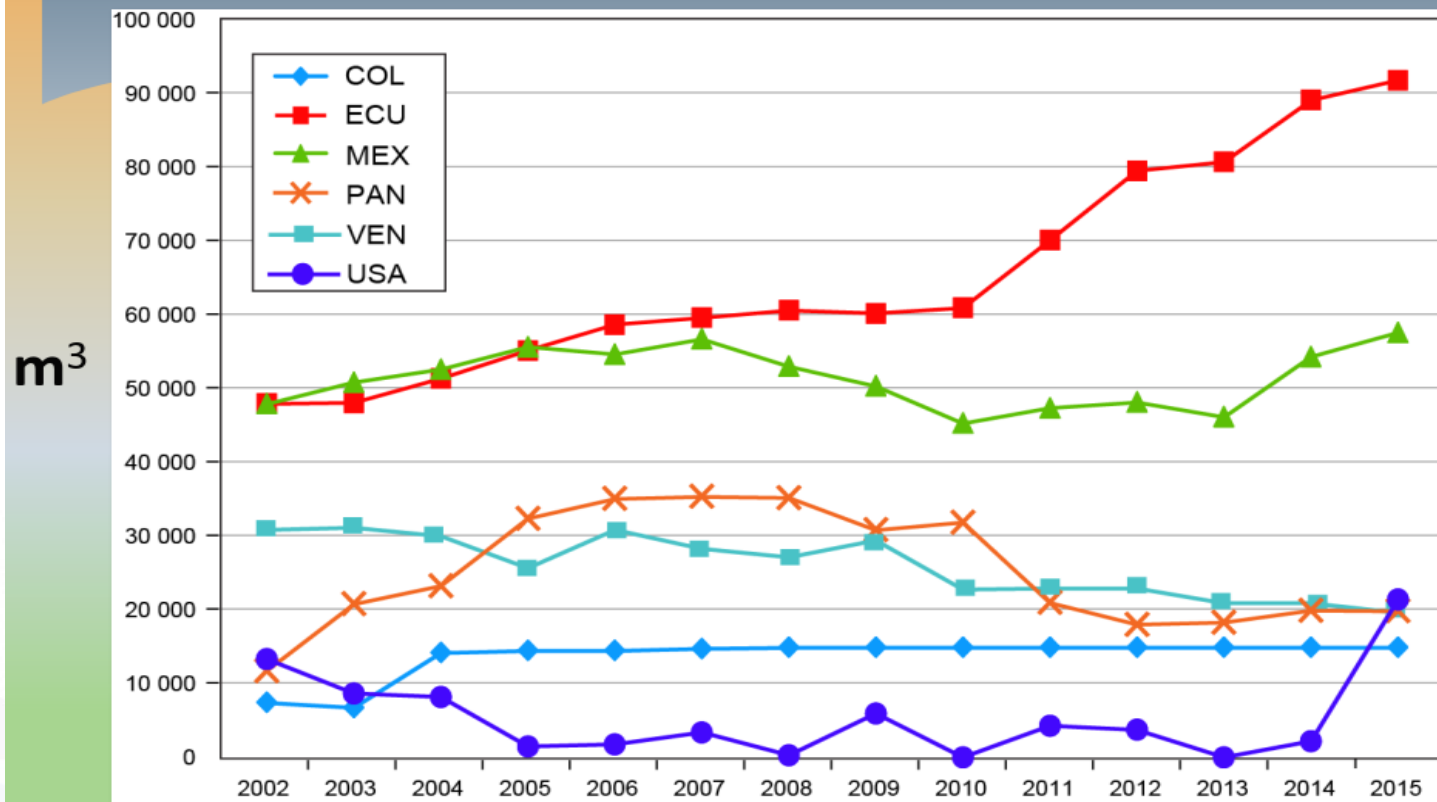
- Bigeye and Yellowfin tunas – periodic overfishing/overfished status
- 2017 Stock Assessment
 - Bigeye of concern
 - Indicators for skipjack not favorable

Purse Seine Capacity Trends



Growth of Fishing Capacity

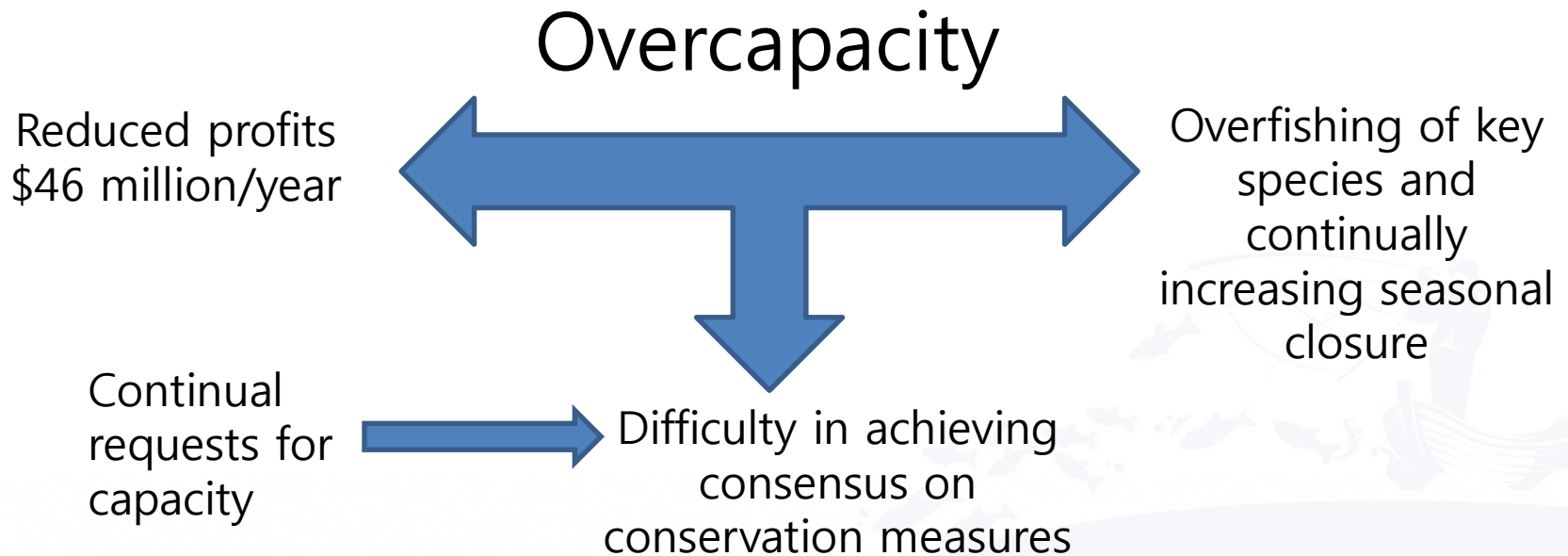
Volumen de bodegas (metros cúbicos) de las principales flotas de buques cerqueros que pescaron en el OPO en 2002-2015—
Well volume (cubic meters) of the principal fleets of purse-seine vessels that fished in the EPO in 2002-2015



The Case for capacity reduction

- Optimum capacity –157,000 m³ to 173,000 m³
- Current capacity on the vessel register – authorized capacity – over 290,000 m³
- Claims and disputes – 53,000 m³
- In 2015 - “activation” of an additional 25,000 cubic meters of capacity resulted in an increase in catch of 10%/yr.

Consequences of Overcapacity



Looking ahead – A Stepwise Approach to Strengthening Tenure Rights

Phase 1 Alternatives

1. Promote alternatives ways to benefit from the fishery without increasing fleet capacity
2. Replacement vessels associated with a retirement of 20% of that vessels' capacity (effort creep control)
3. CPCs with greatest capacity are rewarded for reducing capacity (reductions in the seasonal closure)
4. Uniform threshold limit for bigeye tuna in purse seine sector
5. Pilot IVQs to test monitoring of catch rights

Looking ahead – A Stepwise Approach to Strengthening Tenure Rights

Phase 2 Alternatives

1. Transferable effort (days at sea, set limits)
2. Transferable catch share programs
 - Bigeye/yellowfin combined
 - Skipjack?
3. Buybacks in combination with other measures (e.g., quotas)

Thank you
고맙습니다

