

This screen allows you to manage the list of SMTAs: by clicking the appropriate button, located above the list, you can choose to view only the SMTA incoming, outgoing or all of SMTAs managed locally by Gene-IT. On the right of each line, a green or orange icon indicates the direction of the SMTA exchange.

Double-clicking on a line opens the window and displays the SMTA.

A-2.3) MANAGEMENT OF ACCESSIONS (MCPD)



The management of accessions is conducted by Gene-IT in nomenclature MCPD (Multi-Crop Passport Data). The button "MTA List" at the bottom left, displays the list of SMTA including the accession currently on the screen. As in the view "Contacts", by making double-click on a line of the list and Gene-IT will show the details of the SMTA.

B) Toolbar « Info »



The toolbar "Info" contains four buttons to access the text of the Treaty and that of the SMTA, and some additional background information on the International Treaty and its implementation.

This toolbar allows you to access features available in Gene-IT, but also to quit the software.

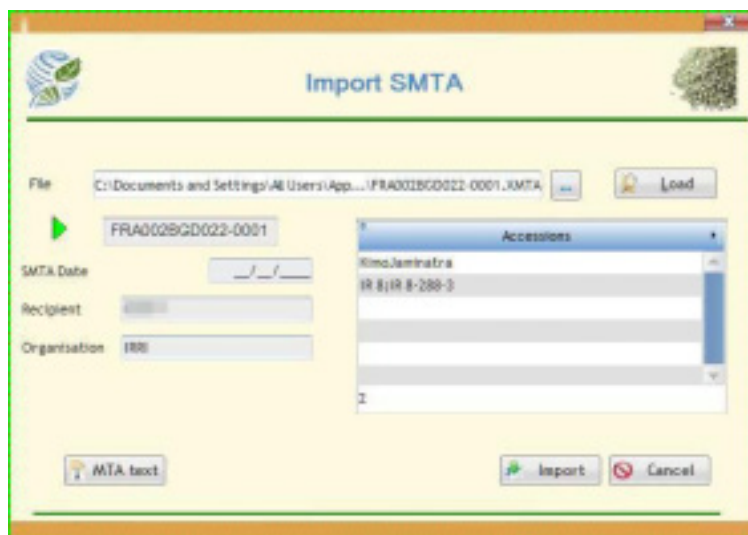
C-1) STANDARD LETTER TO NOTIFY THE INCLUSION OF GENETIC MATERIAL IN THE MLS

This button allows you to get into your word processor, using the RTF format, to write a letter to notify the inclusion of genetic material in the Multilateral System. This document can be adapted to your own needs.

C-2) IMPORT OF ACCESSION RELATED INFORMATION

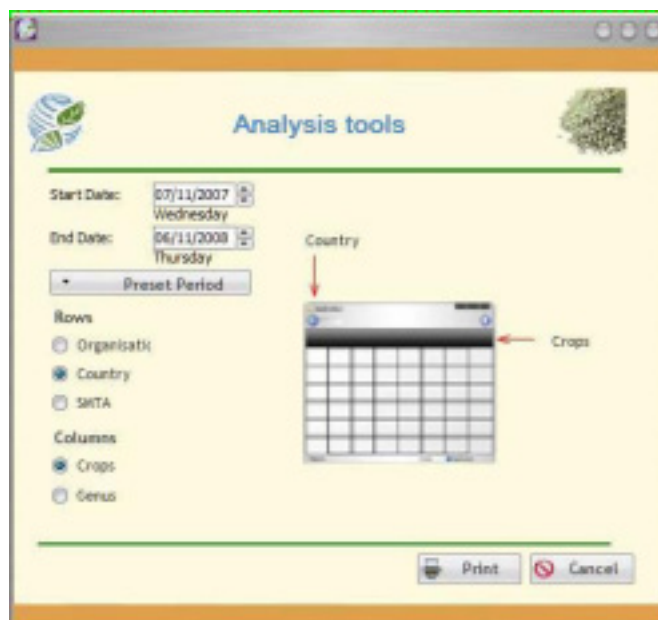
With this button is possible to import the characteristics of the accessions, according to the format MCPD . The export of such data from third-party software is not part of this project.

C-3) IMPORT OF SMTA RELATED INFORMATION



If your counterpart also uses Gene-IT, you can import all the information related to the SMTA with this button. For that, you need to get through your choice of the swap file, exported from your ISP's genetic materials (see A.1-6 Export the SMTA). Once the file is loaded, clicking on the button "Import" to include all the information related to the SMTA in your local database.

C-4) ANALYSES OF EXCHANGES



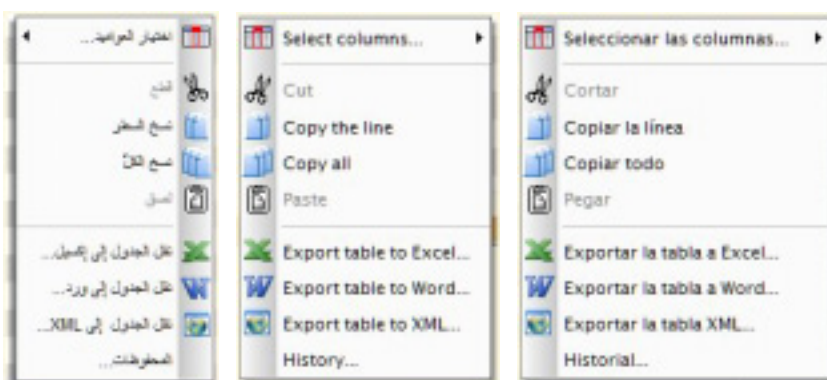
This button allows you to create several tables to give you an overview of your exchange activities under the International Treaty.

By clicking on the appropriate buttons, you select the type of information (organizations, country, SMTA) which should be in the row of the table, while the columns will be filled with information on varieties or genre taxonomy.

Clicking on the "Print" will let you to preview, print and export in various formats, this general overview table.

C-5) CONFIGURATION OF GENE-IT

The button "Configuration" allows the setup of the Gene-IT software environment, particularly the customization of the interface language. You can select to use one of the six official languages of FAO.



Arabic

English

Spanish



French

Chinese

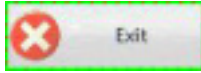
Russian

It is also through this screen that the choice of the identity of the supplier is archived. There are other tools to physically maintain (re-indexing, repair, etc) to the local database and to manage the image library used to illustrate some screens of Gene-IT.

Note 1: Changing the language of the interface will restart the software to implement the changes.

Note 2: The choice of the language will only affect the software interface, not the data exchanged, which will be available only in English.

C-6) EXIT GENE-IT



This button lets you close the program and end your session.

A new use will require you to log in again to enjoy access rights associated with your account (see 3.1).



FOR MORE INFORMATION CONTACT:

**International Treaty on Plant Genetic Resources for Food and Agriculture
Food and Agriculture Organization of the United Nations
Viale delle Terme di Caracalla • 00153 Rome • Italy
Tel: +39 0657053554 • Fax: +39 0657056347
E-mail: pgrfa-treaty@fao.org**

www.planttreaty.org