



HOUSE[of]trees

(GIOVANNI GEREMIA WINNIPEG-CANADA, BRIAN WALL
WINNIPEG-CANADA, BLAINE REPKO WINNIPEG-CANADA,
EMILY BEWS WINNIPEG-CANADA)

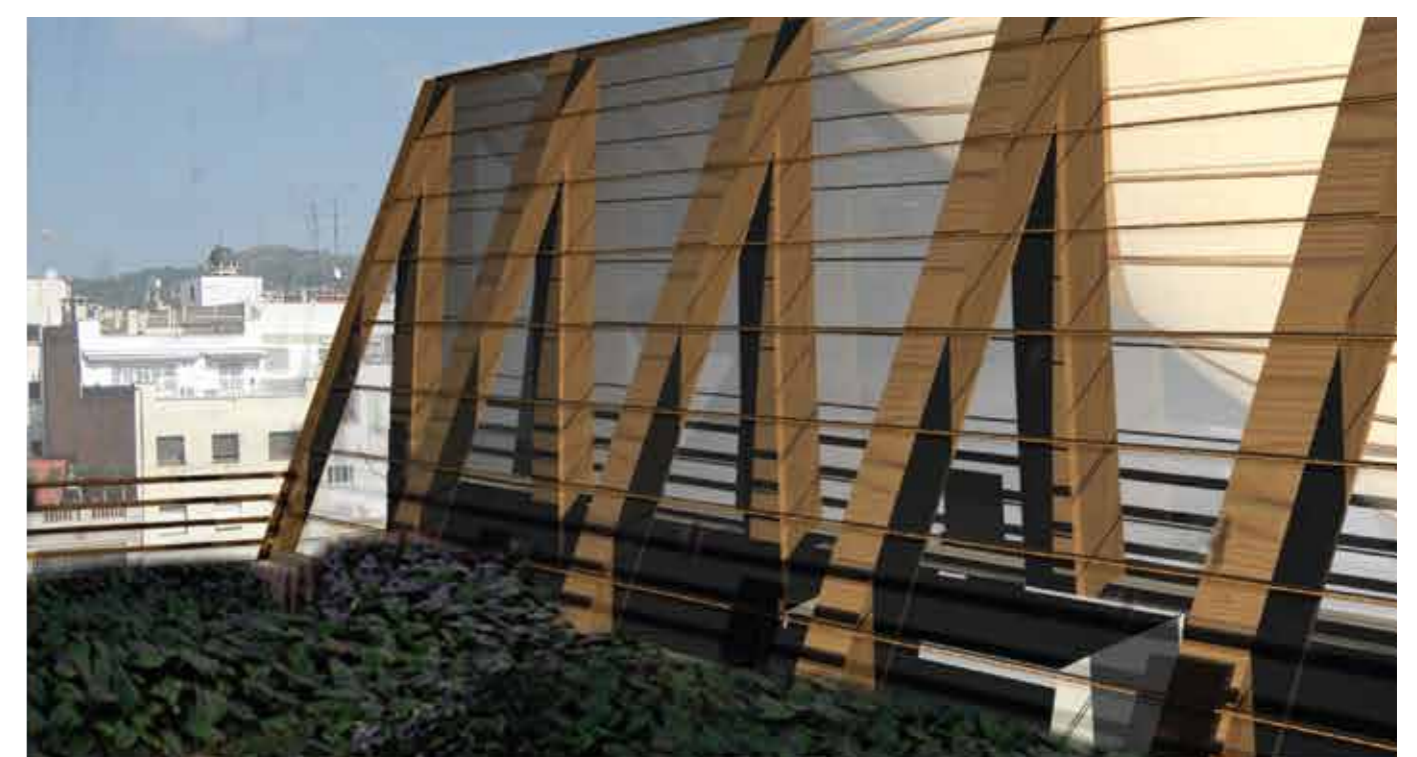
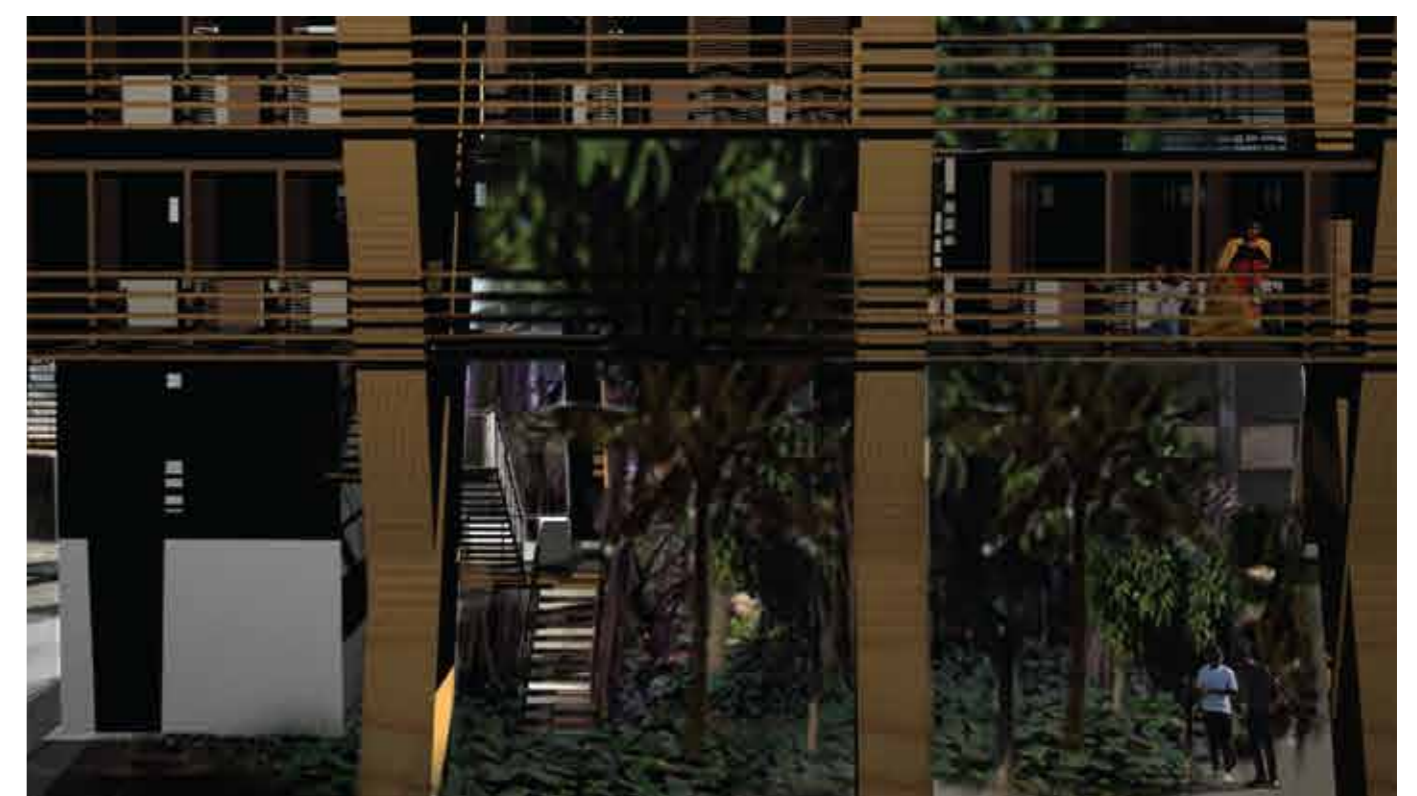
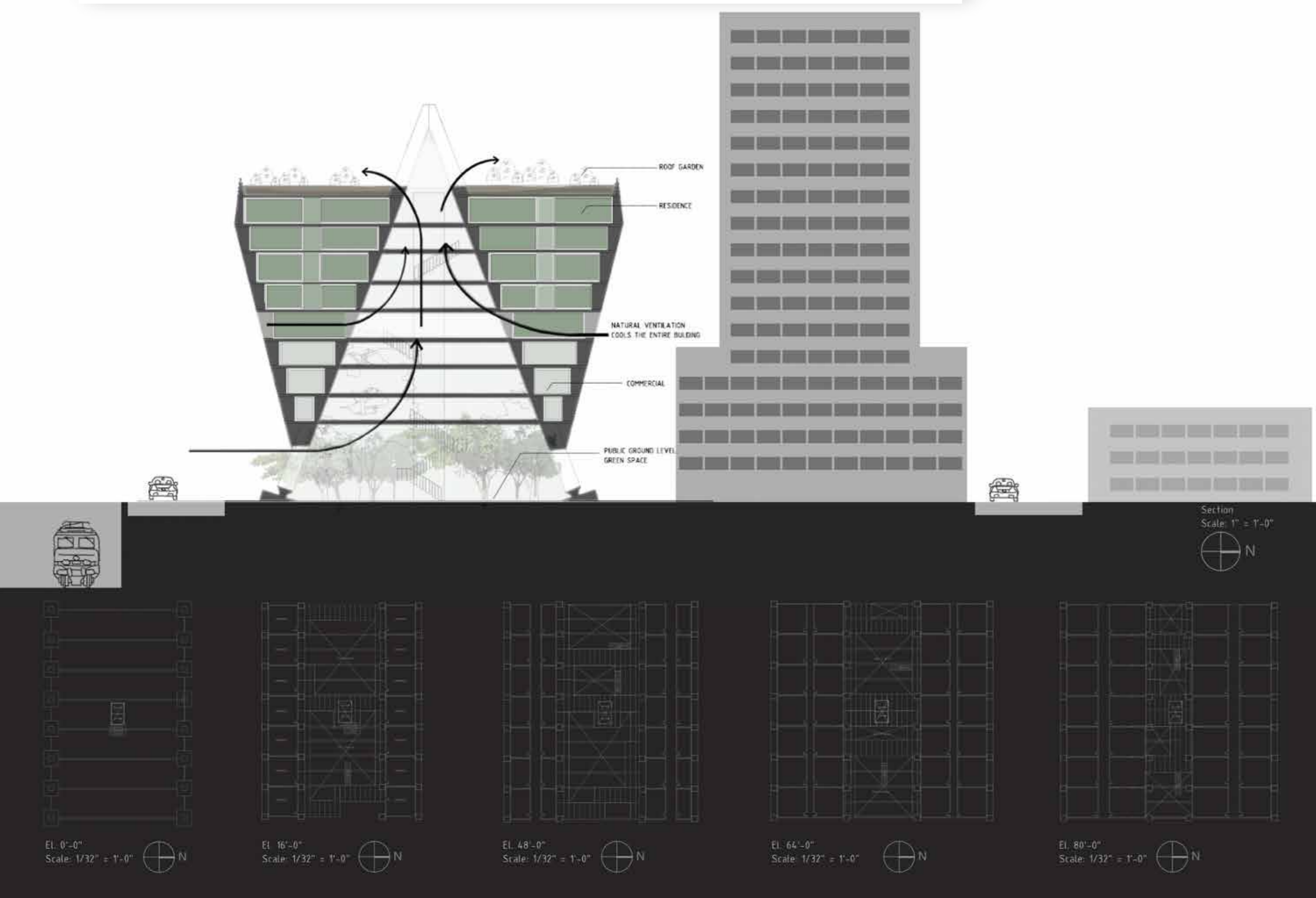
The House of Trees is comprised of two major components: a frame which relies on a repeated and joining W design to create stability and allow for easy expansion and a number of small modular units. The number of units can vary and can be replaced with public gathering spaces. Each unit is fitted with large windows with wooden screens that allow for natural ventilation while shading the interior from direct sunlight.

A large open frame supports both residential and commercial spaces, while reserving ground space for the planting of trees that will grow beneath and through the structure. This vertical forest will be visible and accessible throughout the building and will allow residents to feel as if they live in a forest canopy.

The units on the lower levels are intended for commercial and retail spaces, while the upper floors are reserved for residential units. The residential and commercial spaces are comprised of factory-assembled modular units that eliminate unnecessary waste and which are the only fully enclosed units. The open communal areas also reduce the use of needless materials. The structure is raised from the ground to create a public recreational space and an unobstructed thoroughfare for pedestrian traffic, while wide walkways encourage public gatherings.



Durban, South Africa



The frame is built with glulam beams or glue laminated timber made from small sustainably harvested trees. The wood used in construction is ultimately replaced by the vertical forest planted beneath the structure.

The residential and commercial spaces are comprised of factory-assembled modular units that eliminate unnecessary waste and which are the only fully enclosed units. The open communal areas also reduce the use of needless materials.