

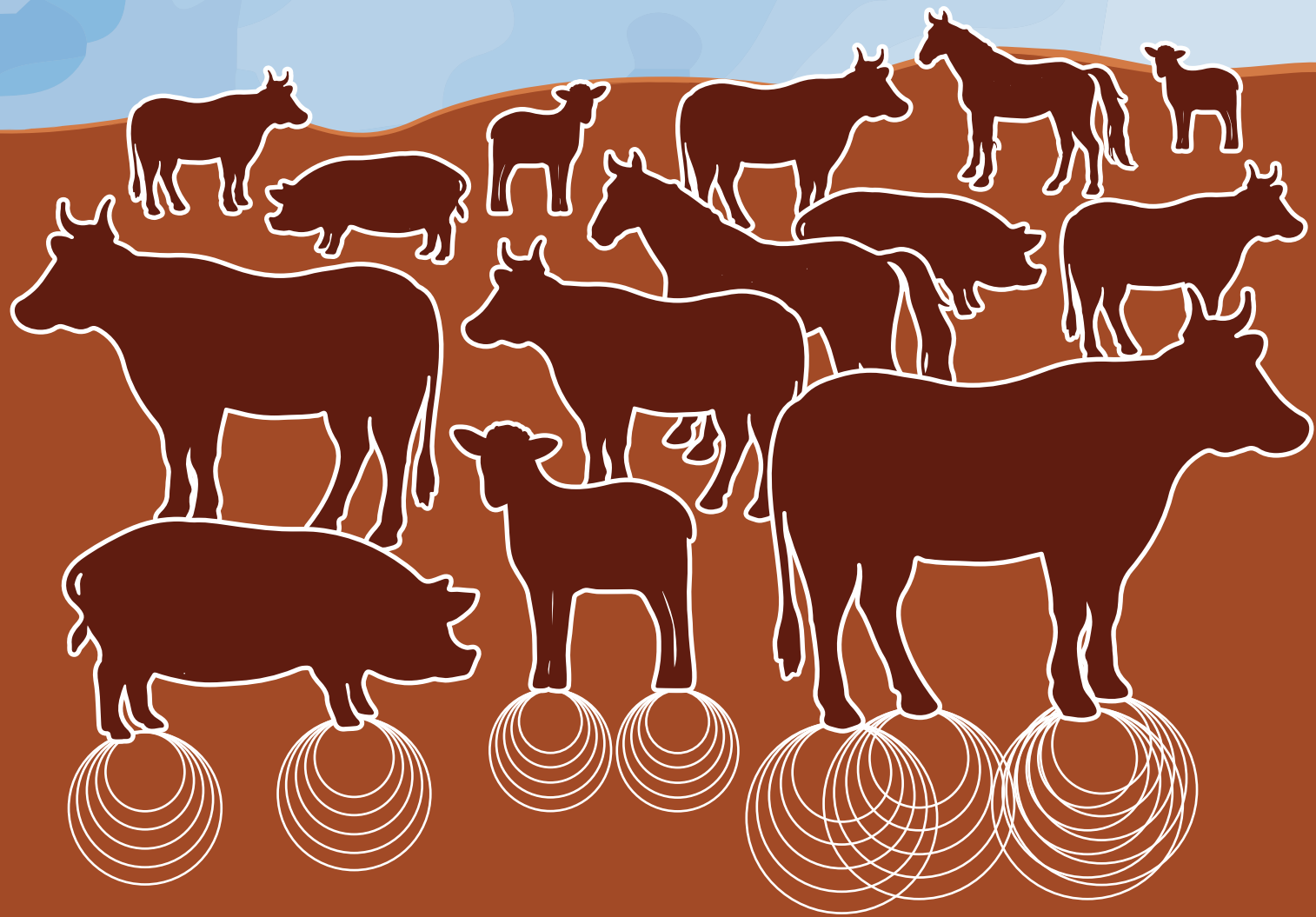
Dugukoloka farafin naga donni bi nasigi ani ka lalaga cogo juman le

AN K'A FILE, DUGUKOLO FARAFINNGO KUNJONJONW YE JUMANW LE YE AN'O BI BALI KA LABEN COGO DI LE



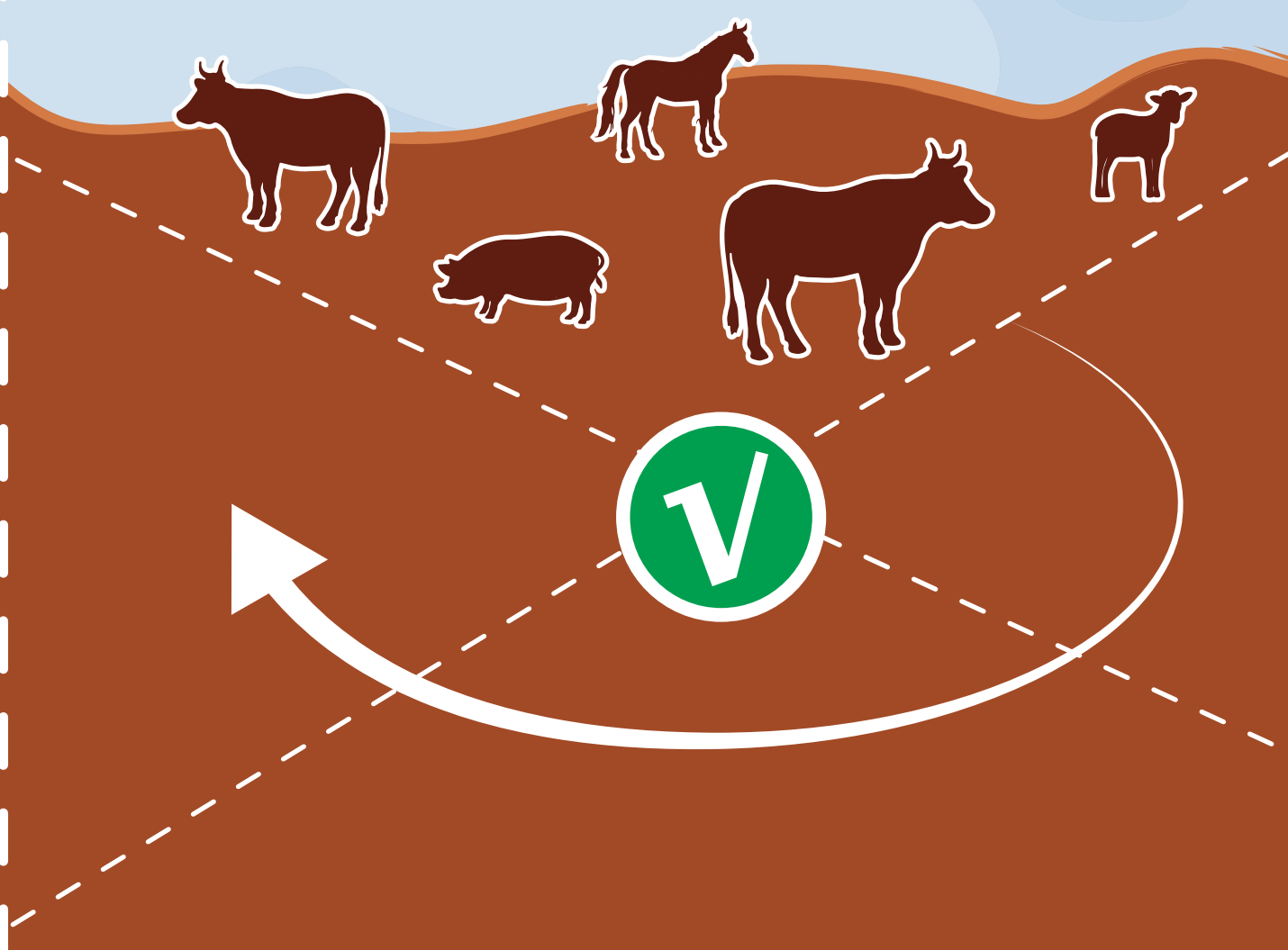
NAKOROTIGELI FEEREW

DON DONNI
(kancogwan min sababu bora begendenden kojuga ra)



BEGEDENDEN LAFISAYANIN:

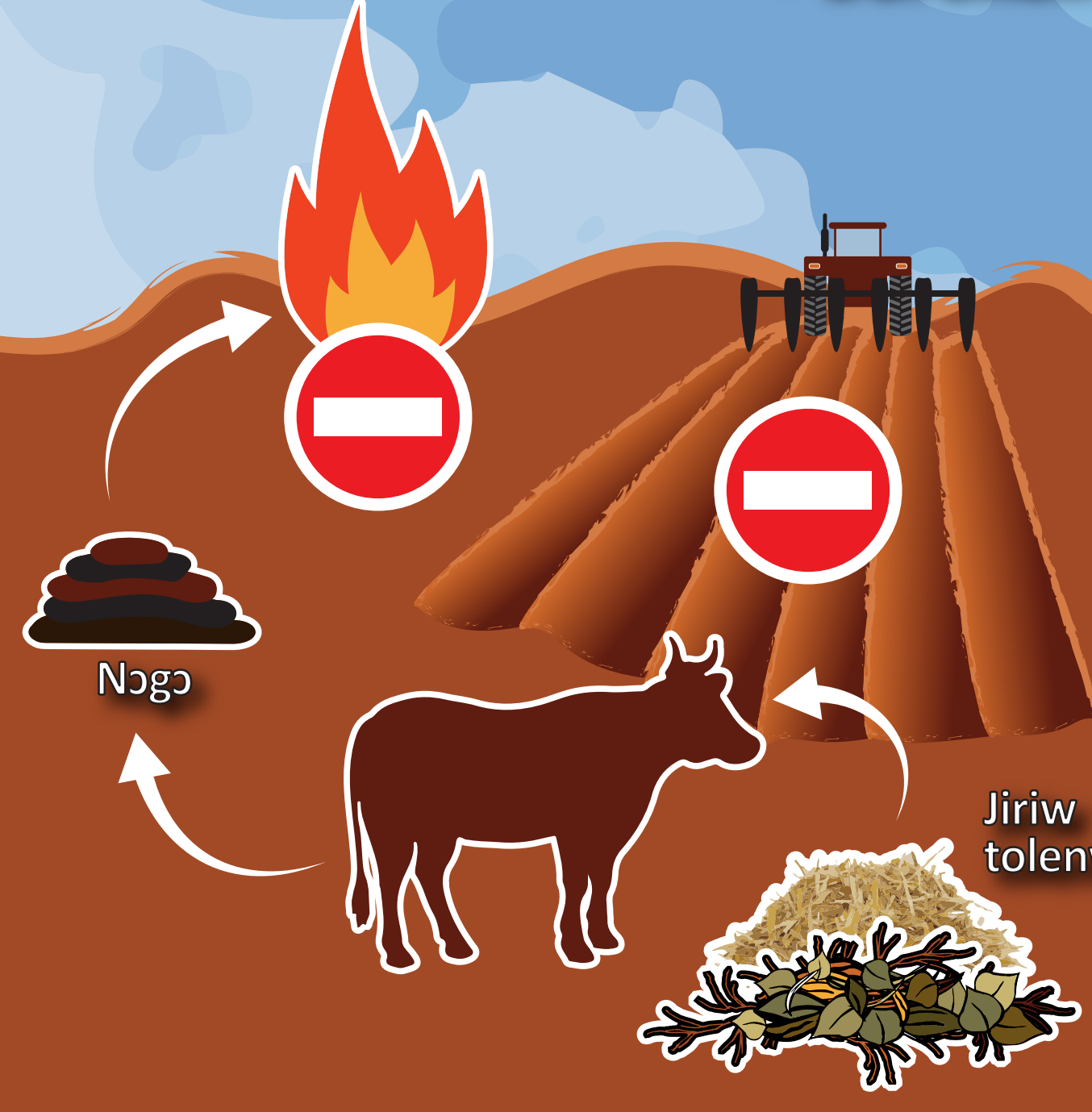
- Ka to ka begenw denden ka munumunu yoraw ni jogan ce
- ka da ba begenw jatida ra kene kelen kelen bee kan



FARIMANFEN HAKE

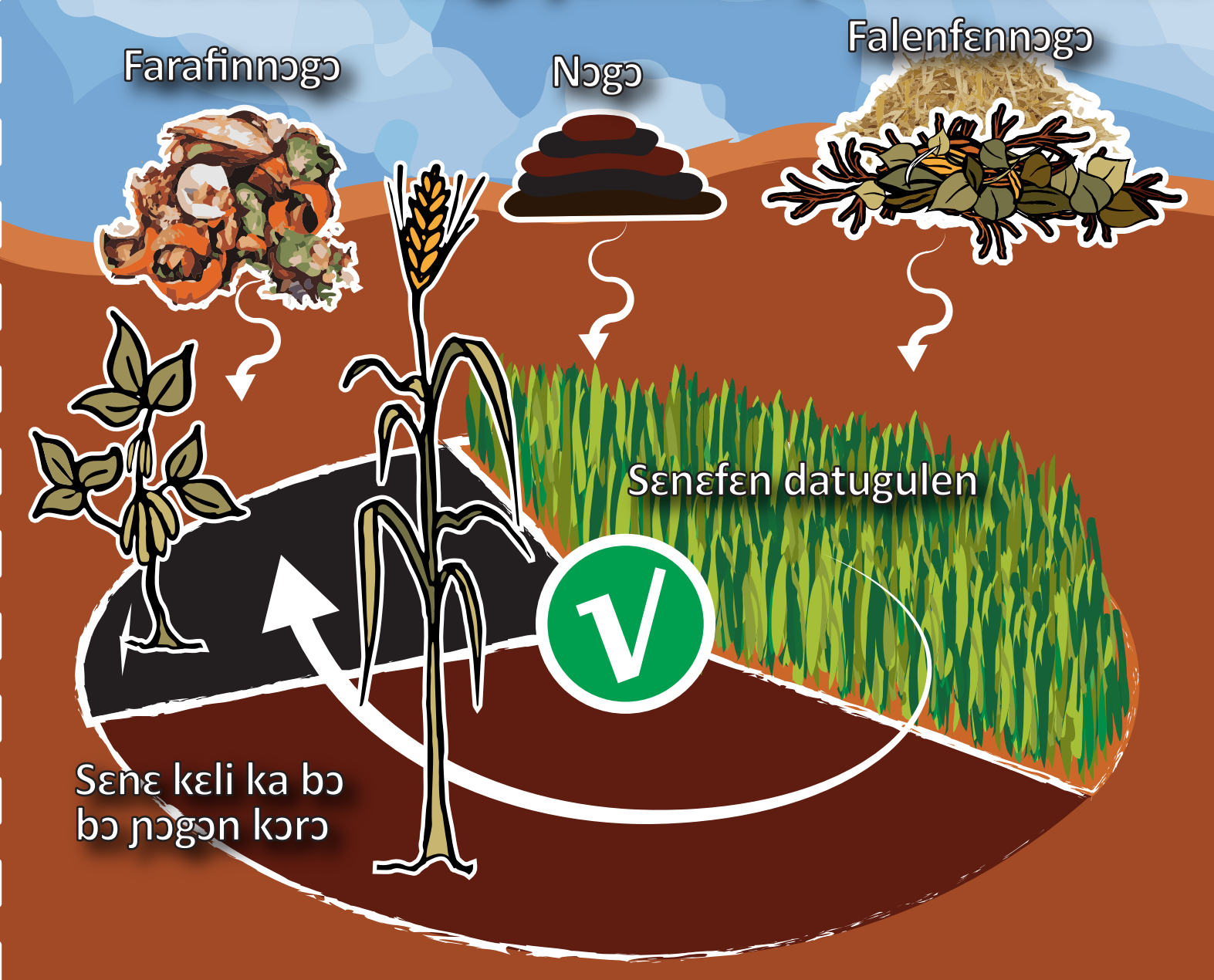
LATUNUNI:

- Begendumuni kanma;
- sansi dilan kanma (fura ma nagami min na)
- Burukuli



K'A MARA ANI/WALIMA KA DO FAR'A KAN:

- sene bokoli jogan kora;
- farafinngo ni tubabungo donni;
- ka dugukolo birinin mara;
- bulukuli dogoyaninba /bulukuli fuu



SENEKEMANSIN

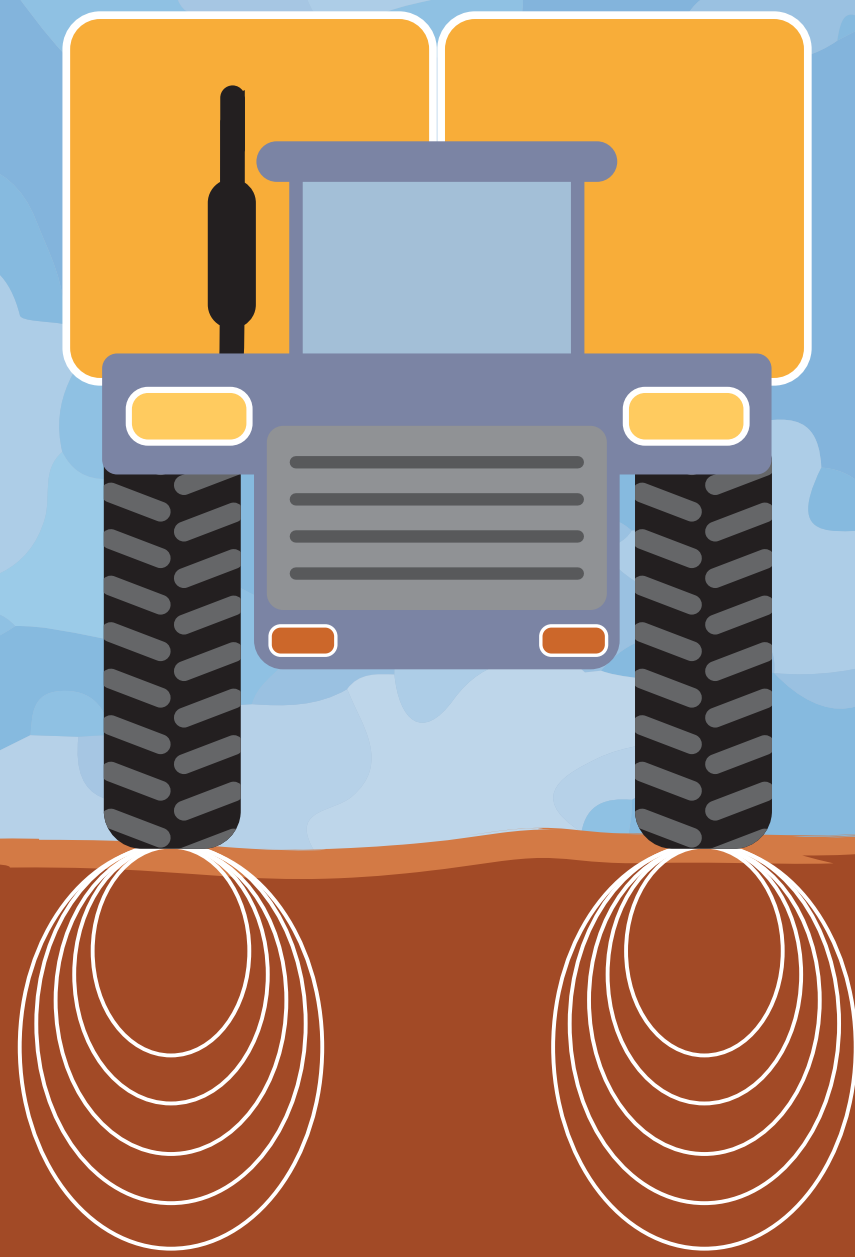
Donibaw

- Kunfe tagama tagama kene kan



Doni fagemanw

- Karsili senekene na



DUGUKOLOJI HAKE

- A kana dugukolo baara n'a piginin lo



- A ye dugukolo baara n'a janin lo
- Éviter de glisser en conduisant



DUGUKOLO MINW JUKORLA KA GWILI, OLU LE LAKURAYALI KA GWELN



FURAKELI FEEREW

MUN LE BI KE N'A KA DUGUKOLO KA GWILI KA BAN?

DUGUKOLO MIN GWILIYA BARAKA MAN BON



Ka PeYIYASI lafisaya ka farimanfen far'a kan dugukolo tigejoraw labenni kanma



Ka senefenw turu minw lilinw bi saran ka dunya walisa ka dugukolo ci ci (misali la : kaba ni begendumuni)

Ka falenfenw lilinw to o bi toli dugukolo kono



SIMIKOJUGU DUNMAN

Wagobilikemansin walisa jii ka se ka jigi dugukolo jukoro



Senefenw seneli ka ba ba jogan koro ni falenfen lilinbaw ye (misali: lilin dumutaw)

