

A wān-wān la d tōe n gudg la d tɔp zīgā sīdbu ?

D GES BǃŃE N WAT NE ZĪGǃ SĪDBU, LA D SĒN TŃE N MAAN TO-TO N GIDGE

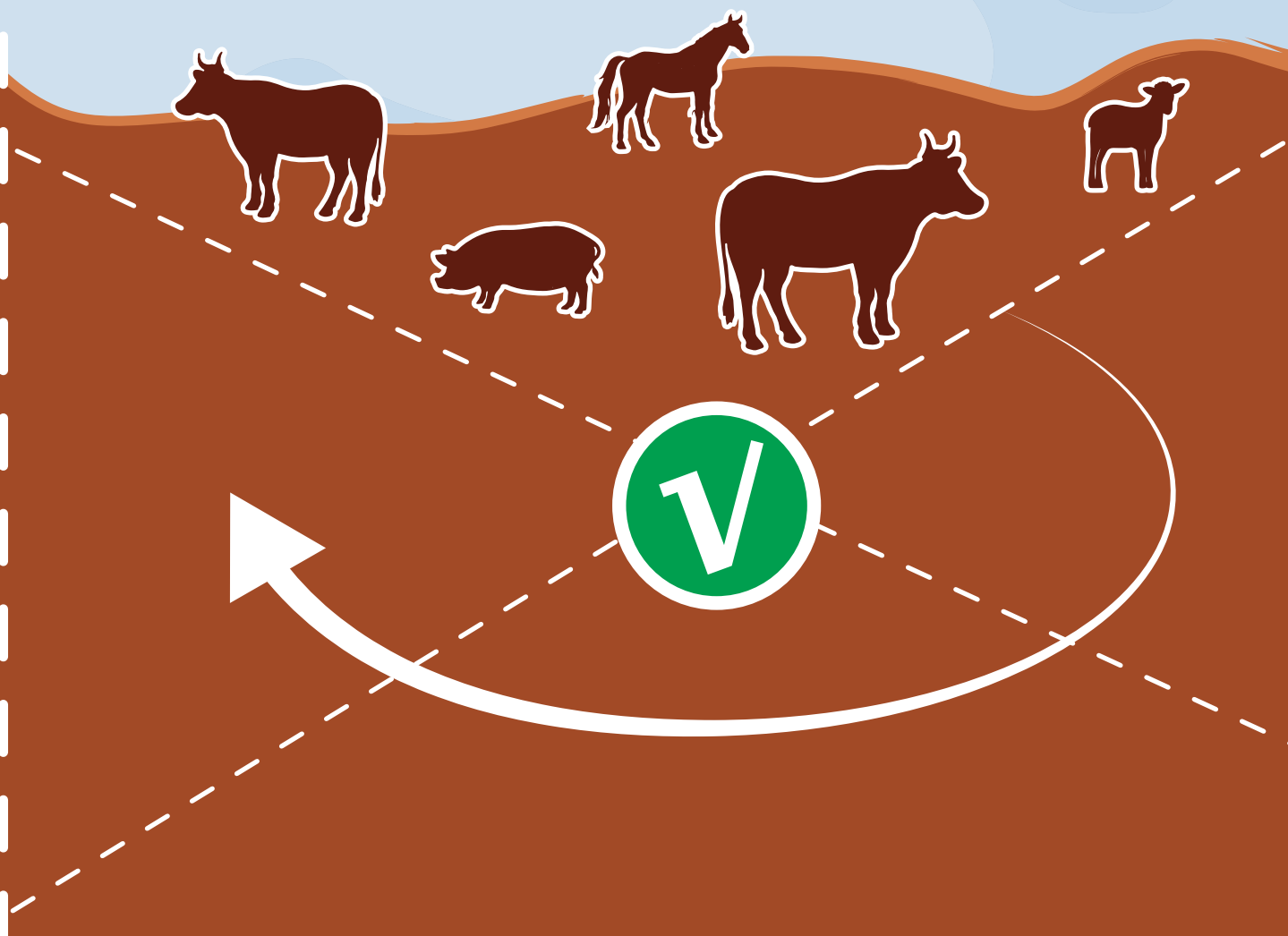
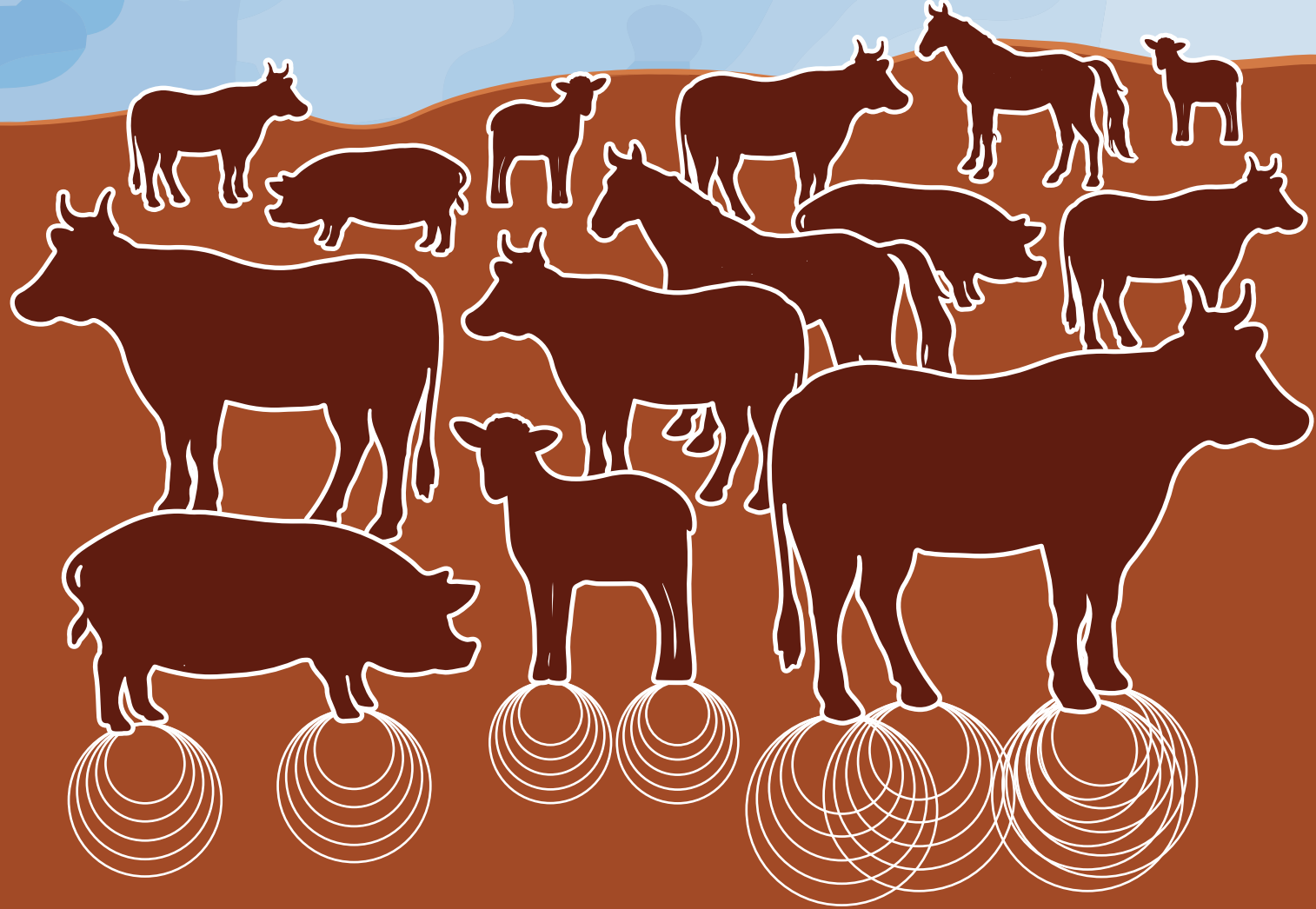


MANESEM SĒN TŃE N GIDGE

TABRE
(rŭms gŭub wusg-wusg zīgā pugē)

RŪMSǃ GŪUB SĒN ZEMSE

- N teemd rŭmsǃ gŭub zĭisi
- N boog rŭmsǃ sŃor zīg fǃa zugu



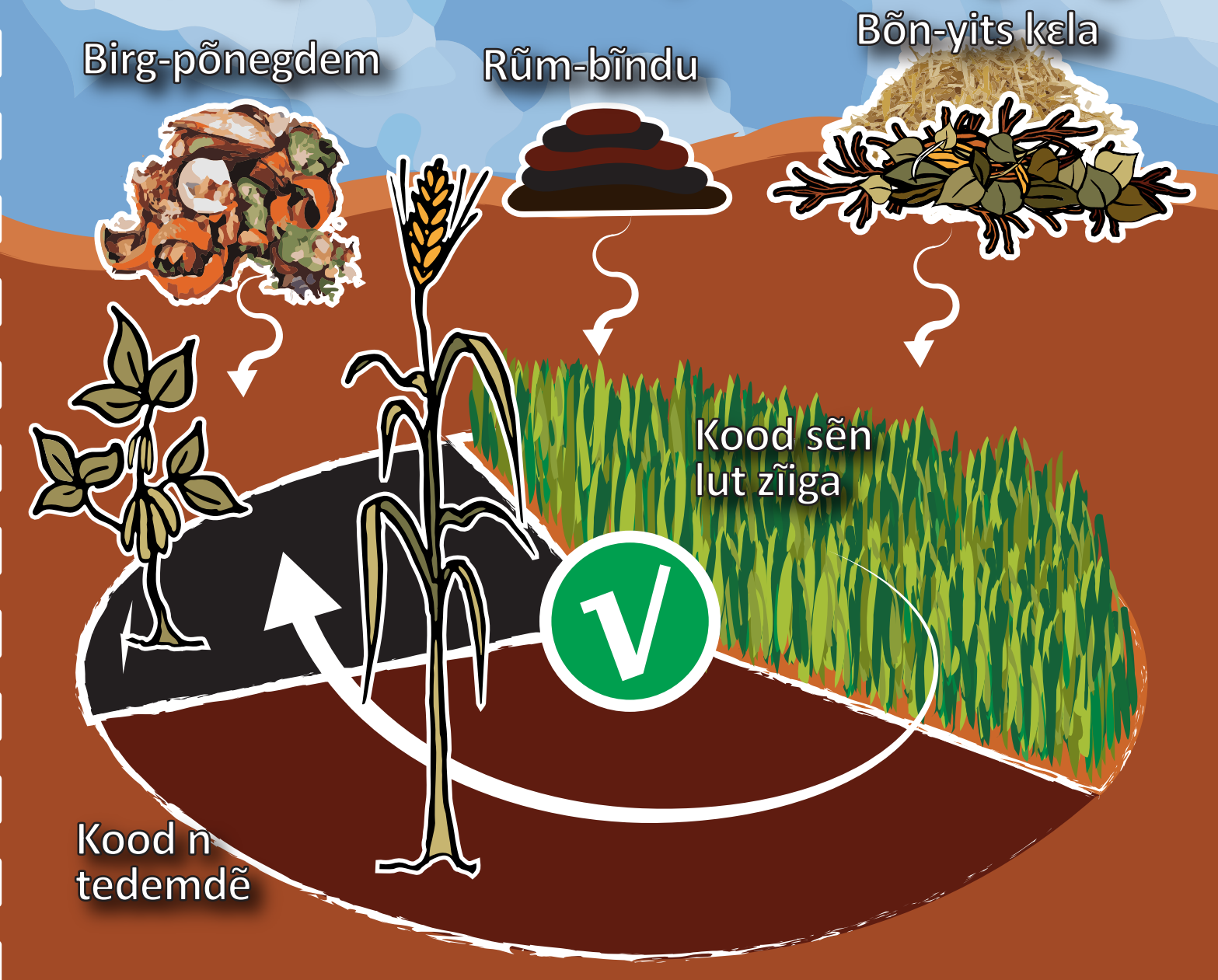
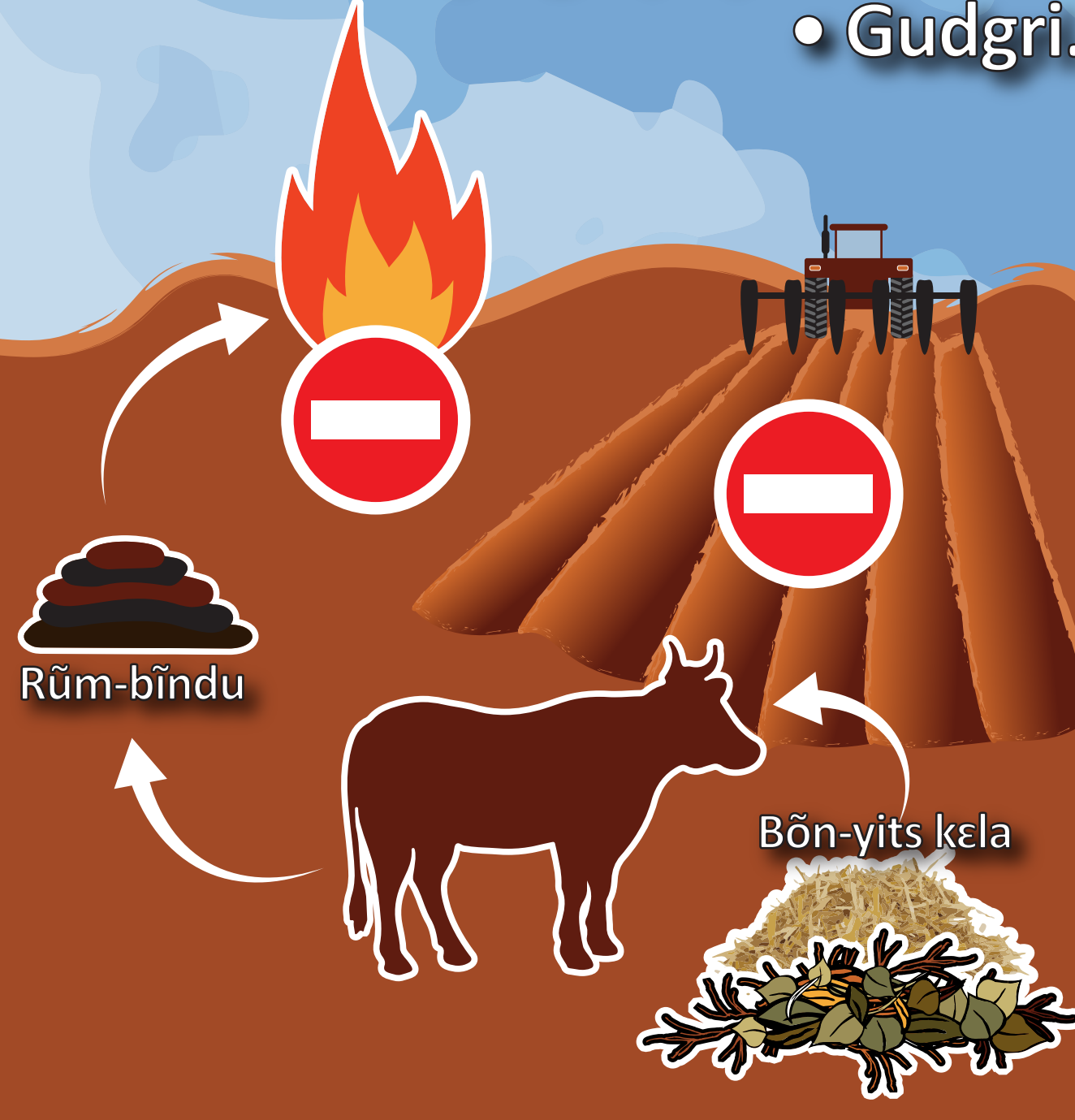
PŃOSG BELEM

YǃKRE

- Rŭmsǃ rub yĭnga
- Karbiirǃ maaneg yĭnga (biyo-karbiirǃ)
- Gudgri.

N KELL N GǃD NE/BI N PAAS

- Kood n tedemdē
- Rŭms bĭnd ne birg ningri
- N kell n bas zīgā ne sagd nins sĕn lud-a wǃ
- Gudgr sĕn zemse/bas n da gudgi

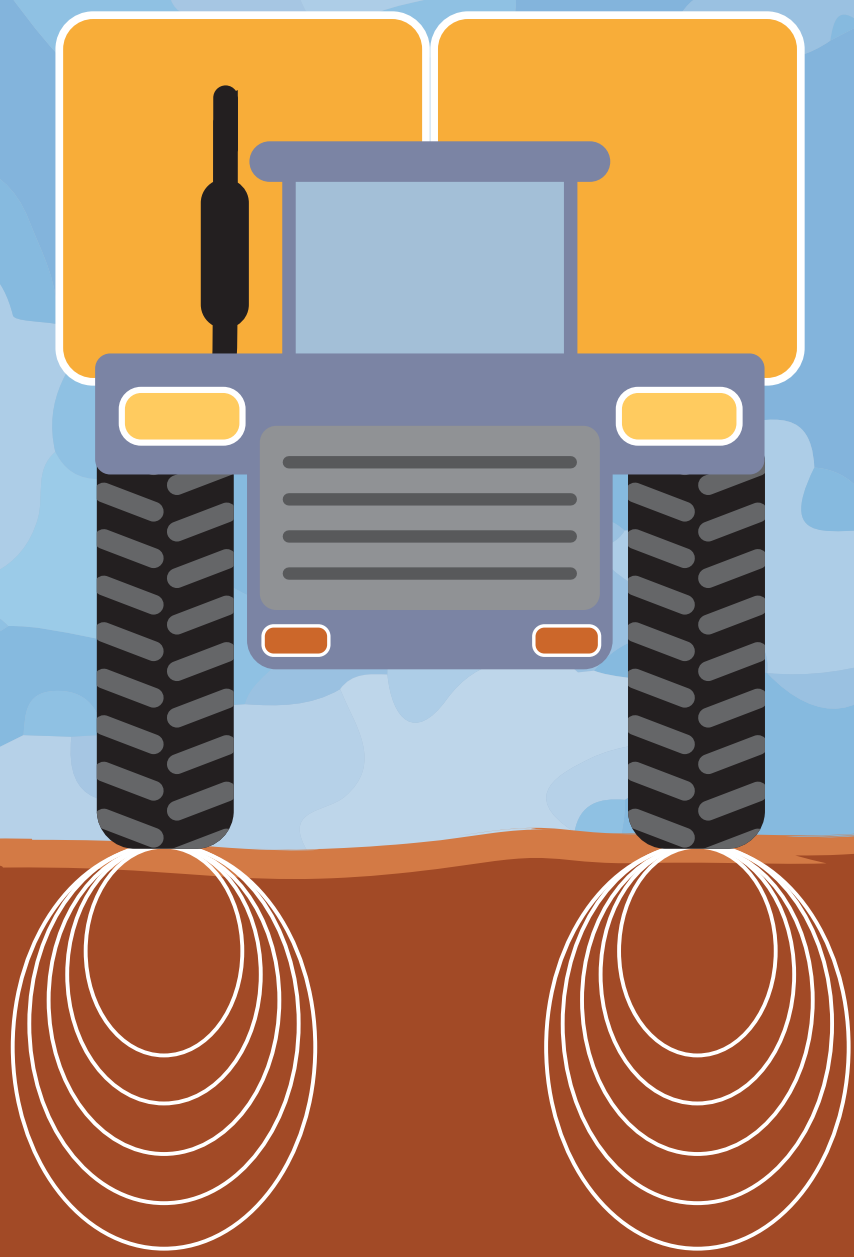


KOOB MASĪN-DǃMBA

Te-zisdo
• Tuom sĕn maand yaar zīgā zugu

• Tuom sĕn maand tu gŭusg be zīgā zugu

Te-faasse



ZĪGǃ KOOM BELEM

• N gŭus n da tum ne zīgā t'a sǃ n ya maasr ye

• N gŭus n da salg ye

• Tum ne zīgā a sĕn wat n ya koεnga



ZĪS NINS SĒN SĪD N TI TǃAG TĒNGRǃ YAA ZĪS MANEGR SĒN YA TOOGO



MANESEM SĒN TIPDEMEASURES

YǃMB ZĪGǃ Sǃ N SĪDI Y SEGD N MAANA A WǃN-WǃNA ?

SĪDB SĒN KA LIM WUSGO

SĪDB SĒN LIM

N maneg zīgā asud (pH) tu zemse, n ning pŃosg n paas sĕn na yĭl n maneg-a

Gudgr sĕn zems bala

N bud kood yǃg sĕn vudg tĕng ti limdē, sĕn na yĭl n wǃ zīgā sĕn sĭdǃ (makre, kamaanǃ ne luzern)

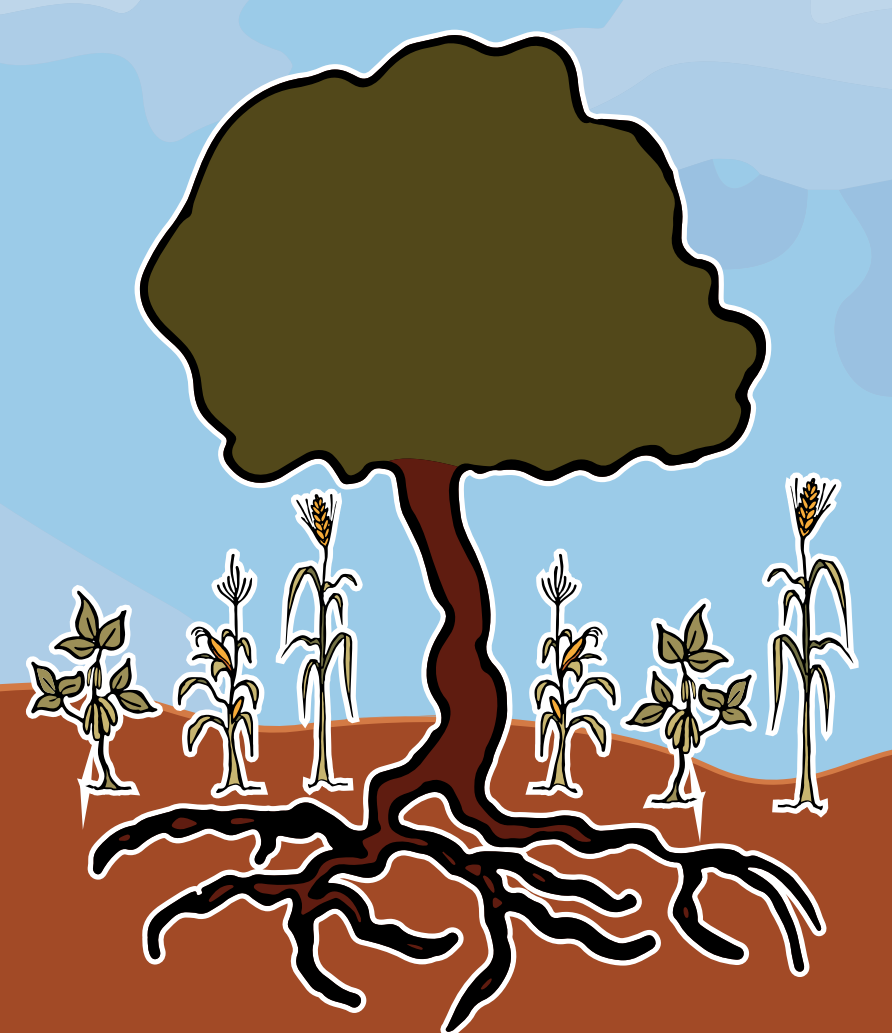


N wǃ zīgā boag sĭdmǃ

N bas bŃn--yĭtsǃ yǃg tu pa tĕngr n pŃoge



Tĕn-gǃon-tĕngre



Tus koobo

Kood n tedemdē ne bŃn-yĭts sĕn tar yǃg-beda (makre : tus sĕn kŃt kaam)

