



# SAMIS

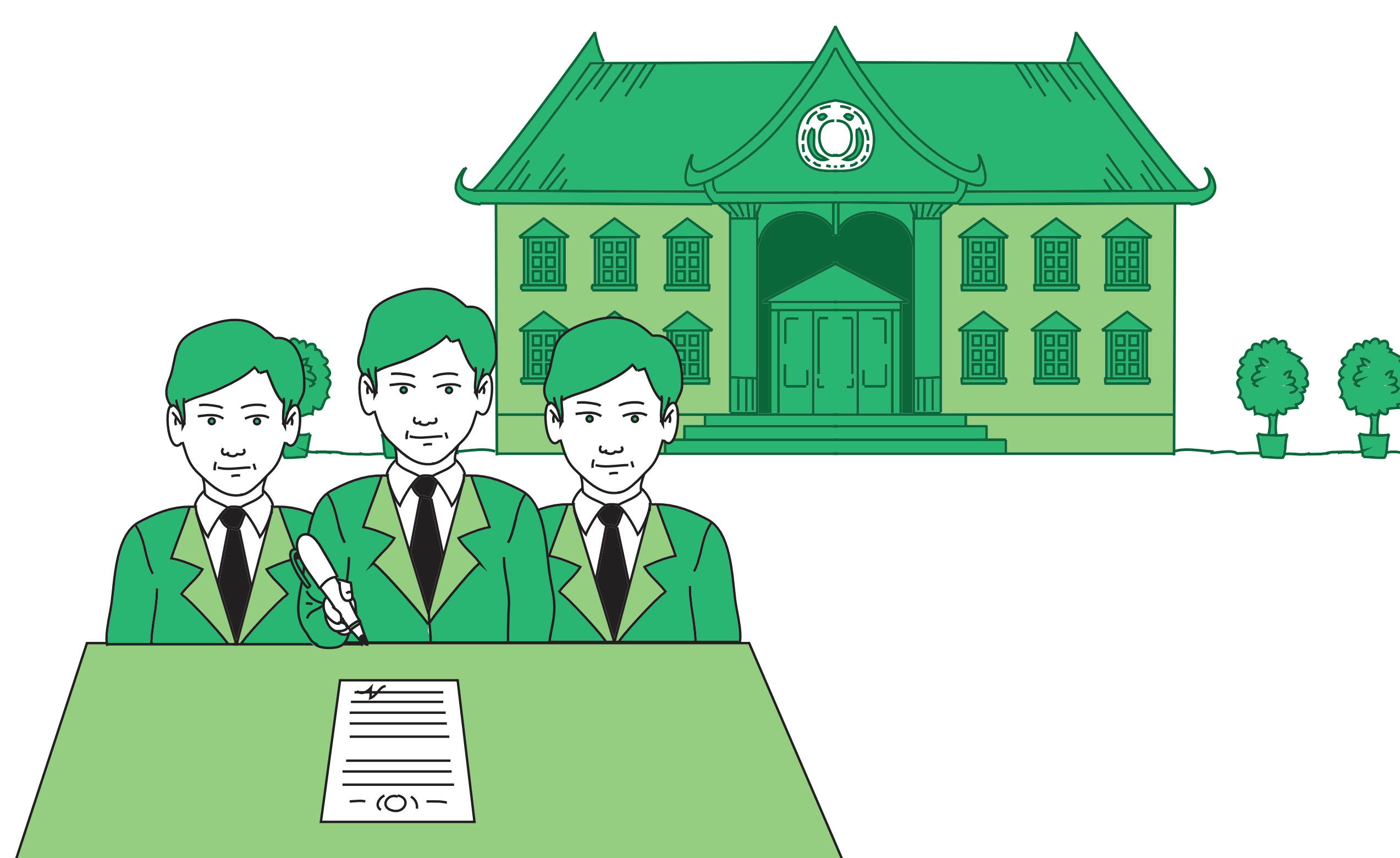
## USERS

### FARMERS



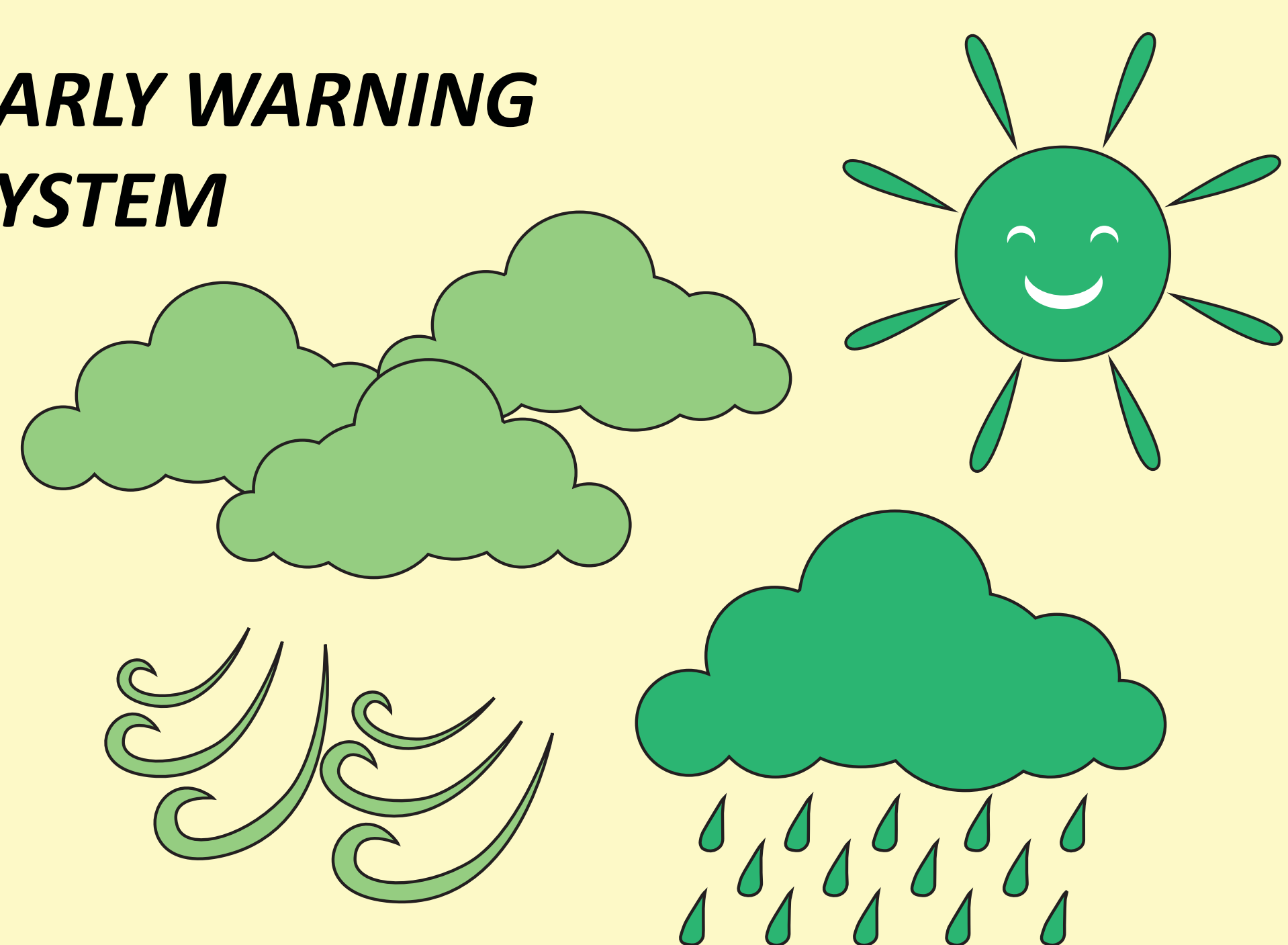
### POLICY MAKERS

Ministry of Agriculture and Forestry

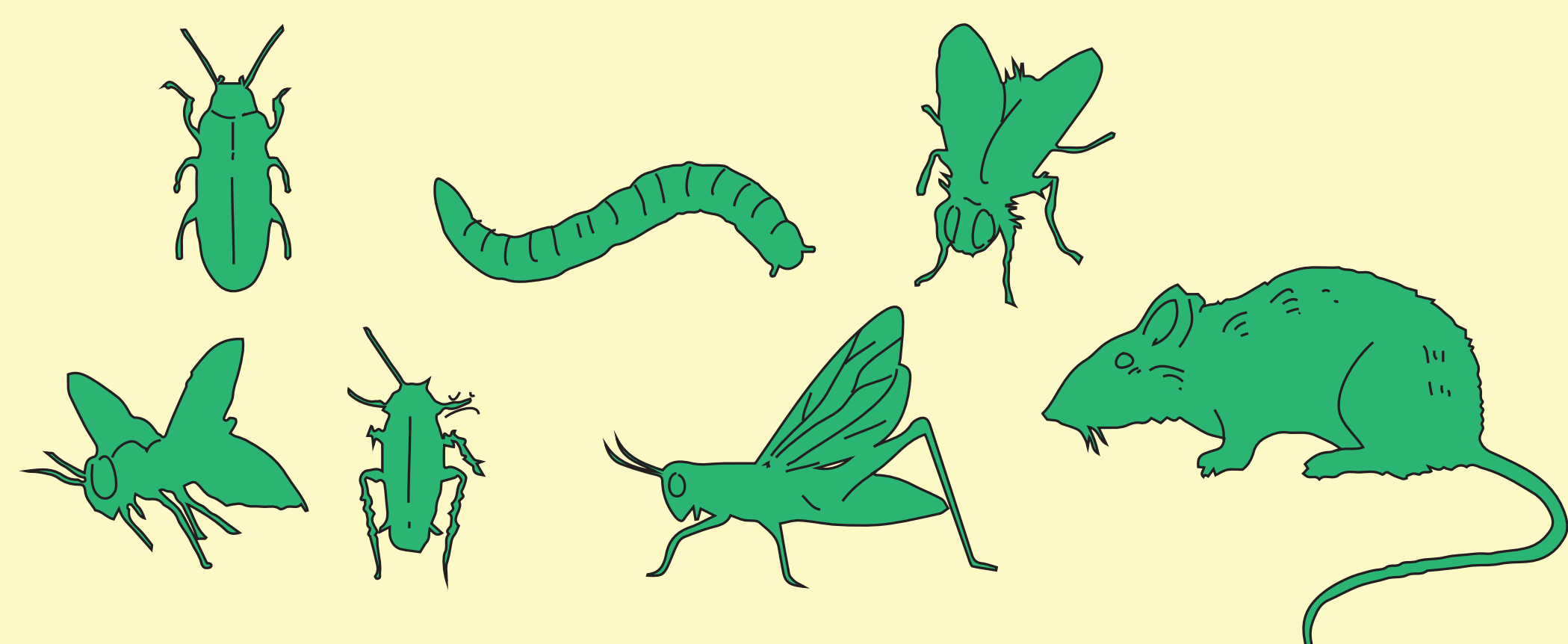


Seasonal Forecast + Weekly Bulletin

#### EARLY WARNING SYSTEM

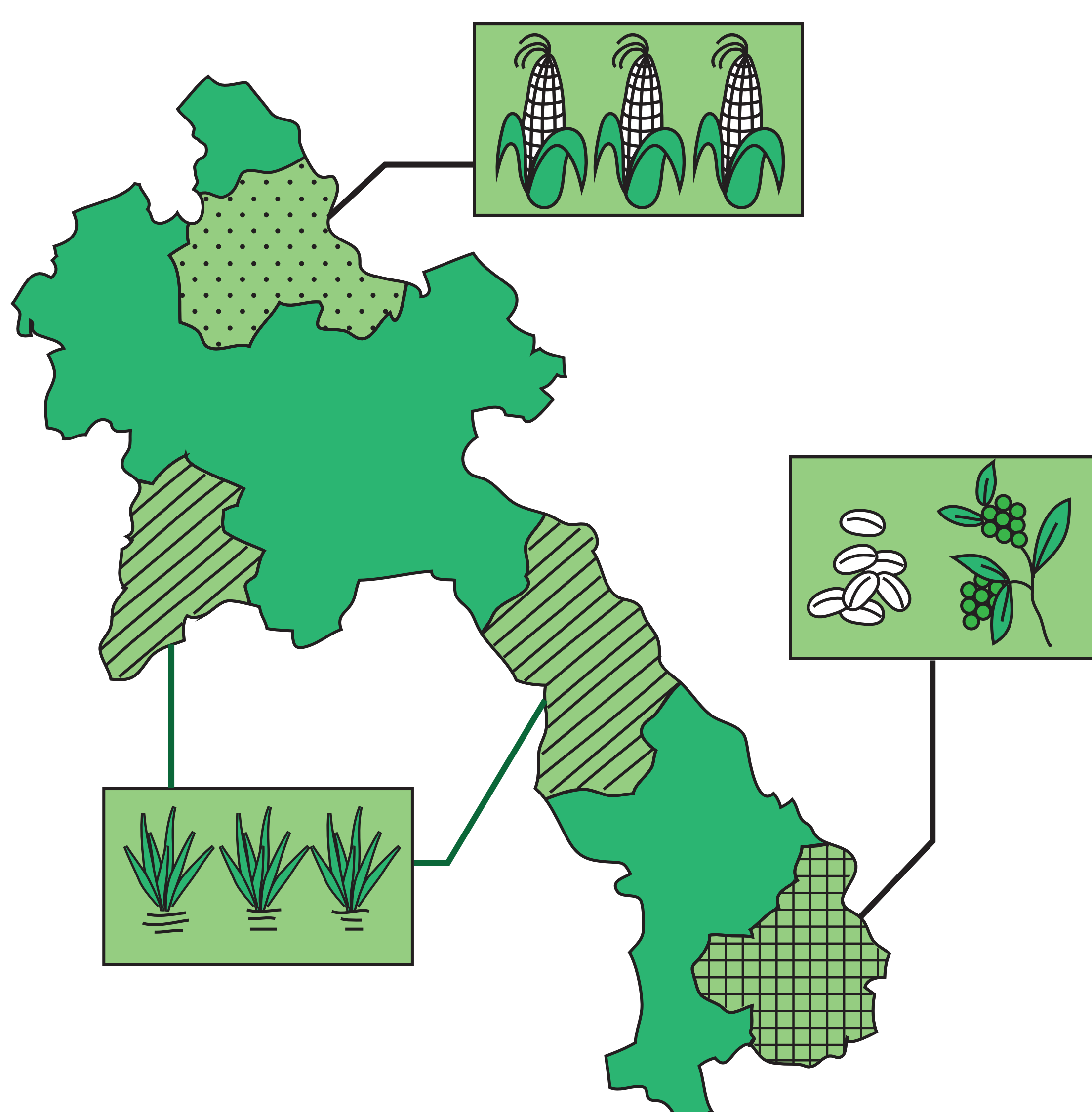


Crop Management & Pest Forecast



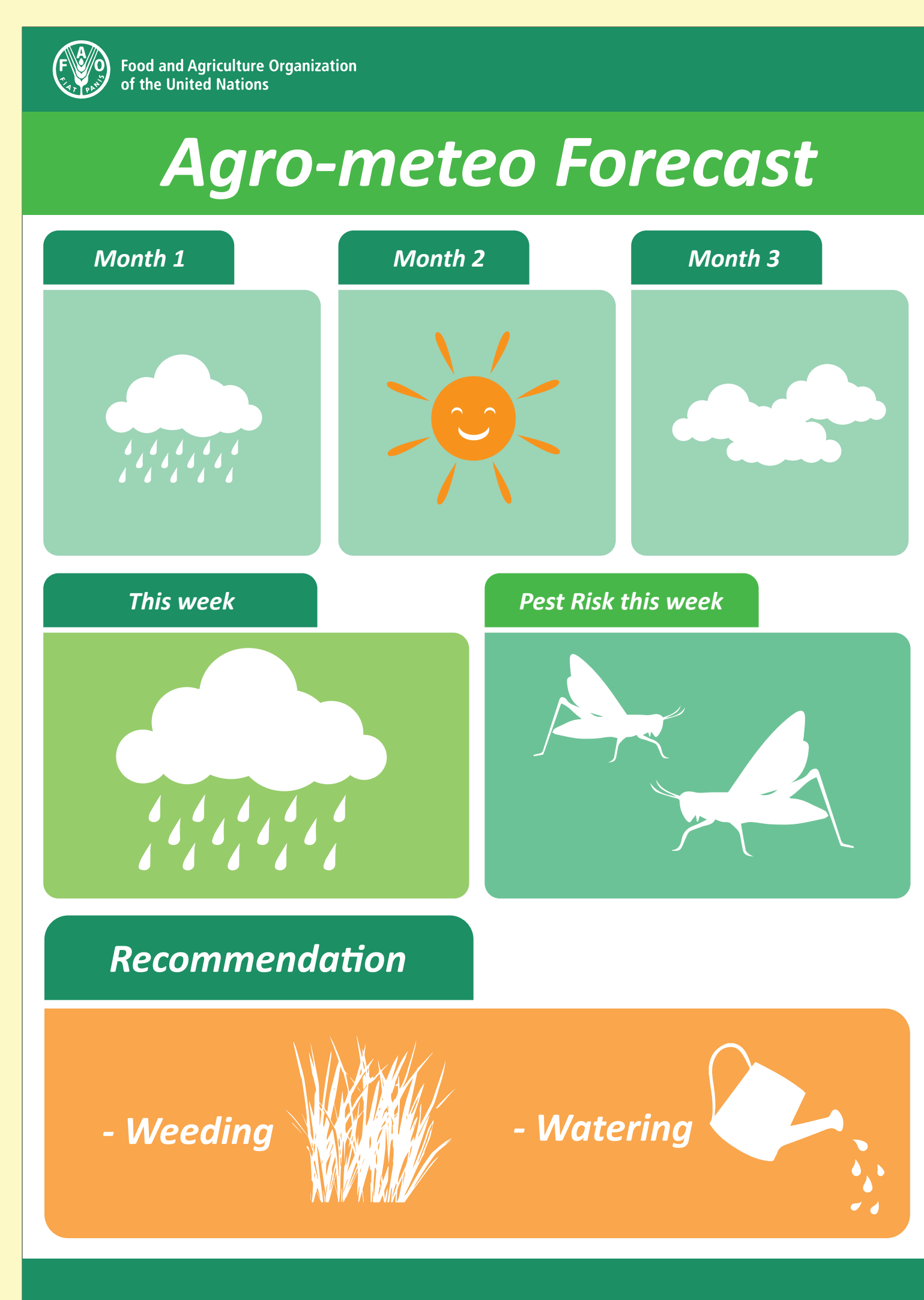
## OBJECTIVES

Future crops scenarios.  
Where will the crops grow?

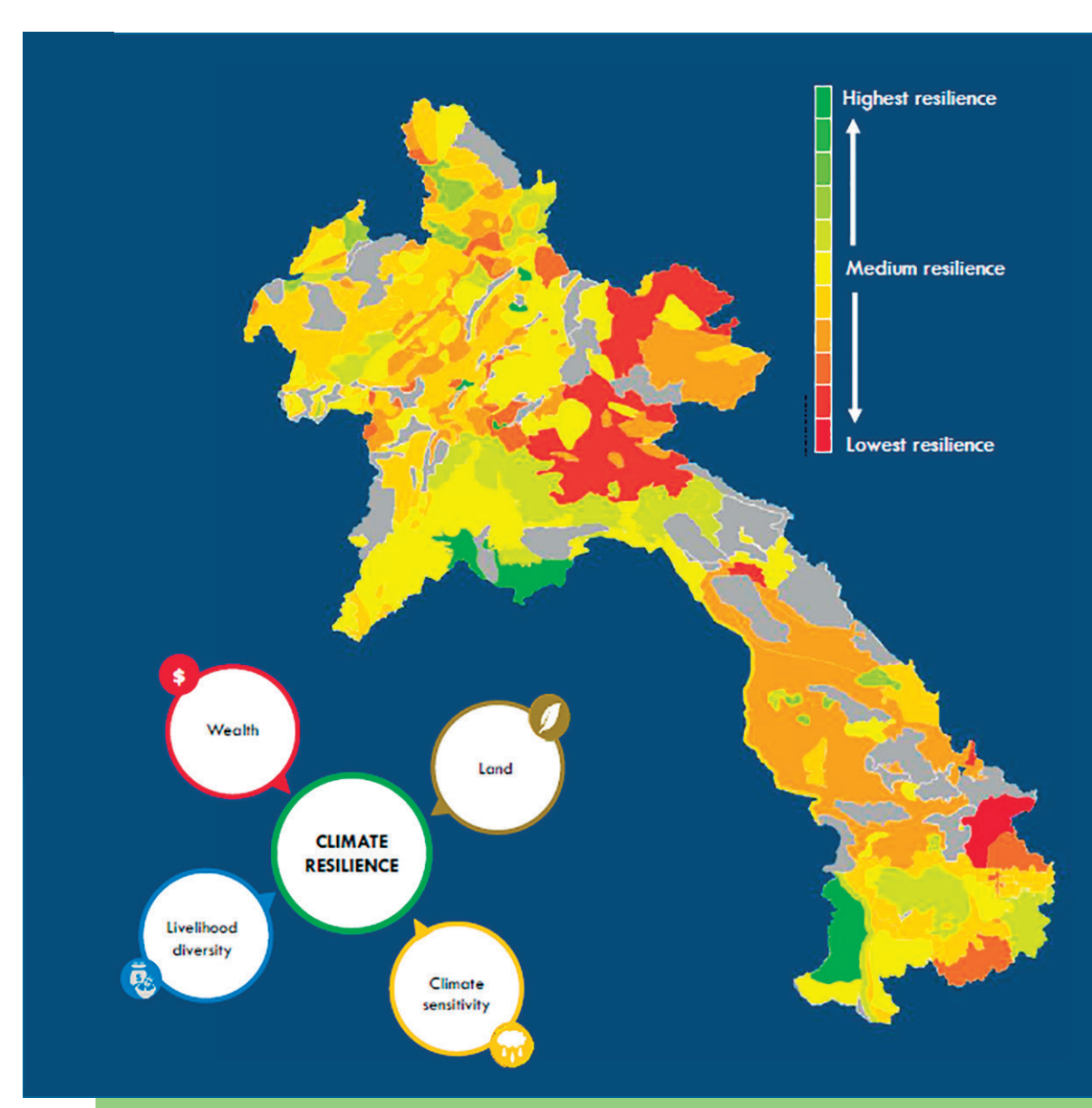
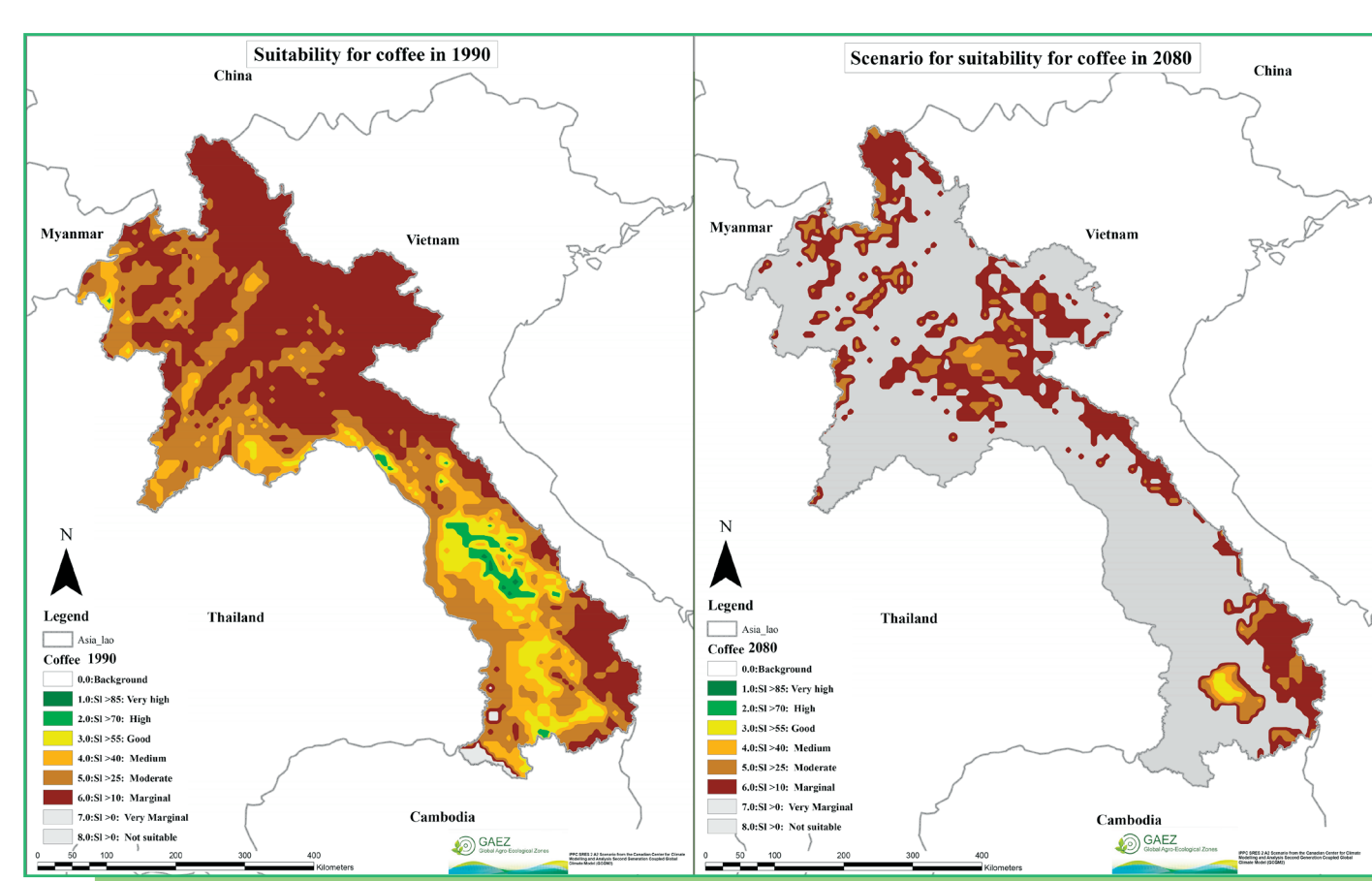


LaCSA  
(Laos Climate  
Services for  
Agriculture)

Ministry of  
Environment and  
Natural Resources



## METHODS



LRMIS  
(Land Resources  
Information Management  
System)

AEZ  
(Agro-Ecological Zoning)



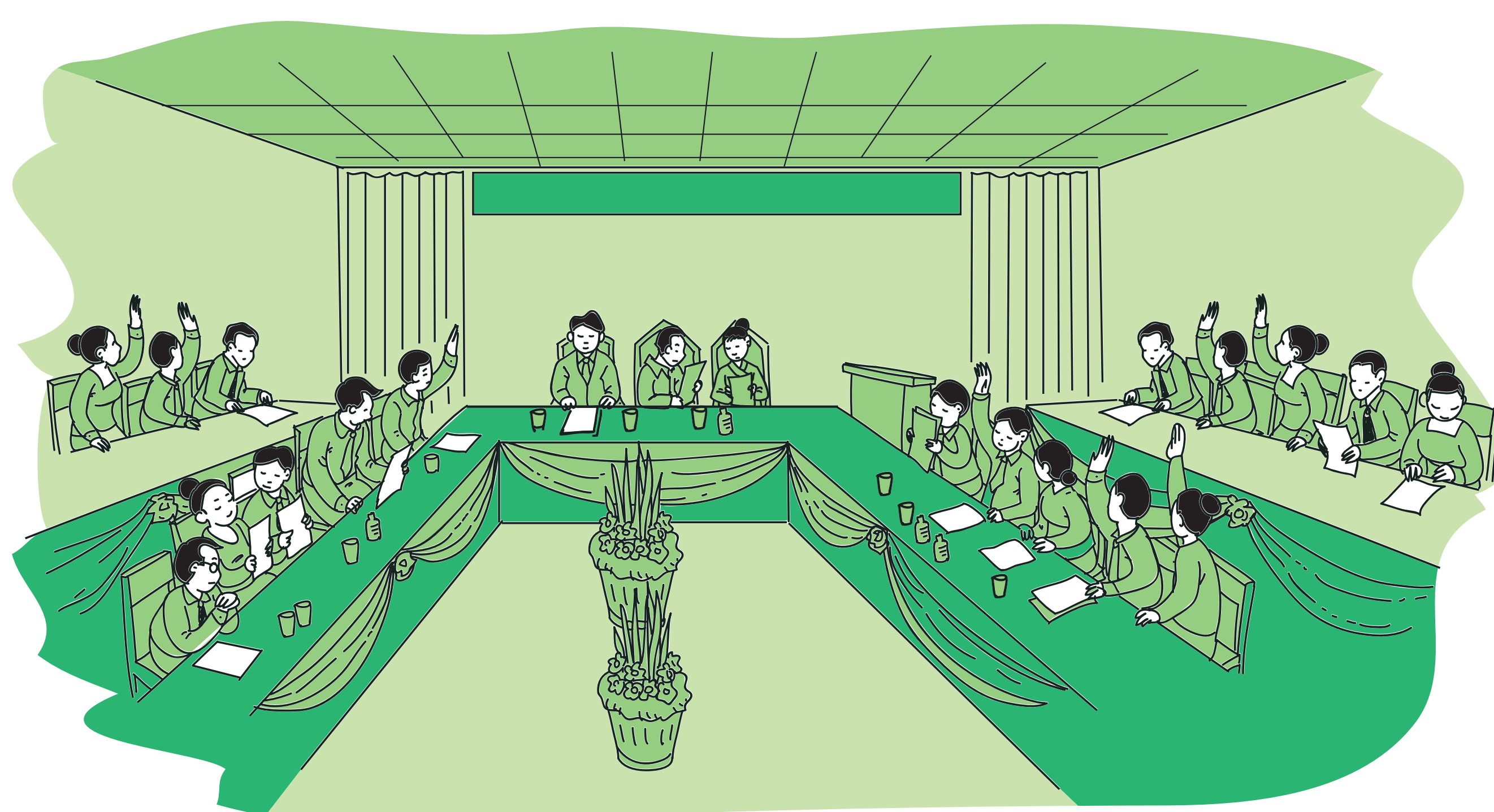
App - Radio - Television -  
Speakers - Posters

## RESULTS



POLICY MAKING AND PLANNING

App & web page for  
decision makers



The activity is implemented by the project  
Strengthening Agro-climatic Monitoring and  
Information Systems (SAMIS) to improve  
adaptation to climate change and food security  
in Lao PDR through GEF financing.  
[www.fao.org/in-action/samis](http://www.fao.org/in-action/samis)

