



World Agriculture Watch

TERRITORY

LEAVING NO ONE BEHIND

World Agriculture Watch (WAW) is a tool for building
inclusive investment and social policies



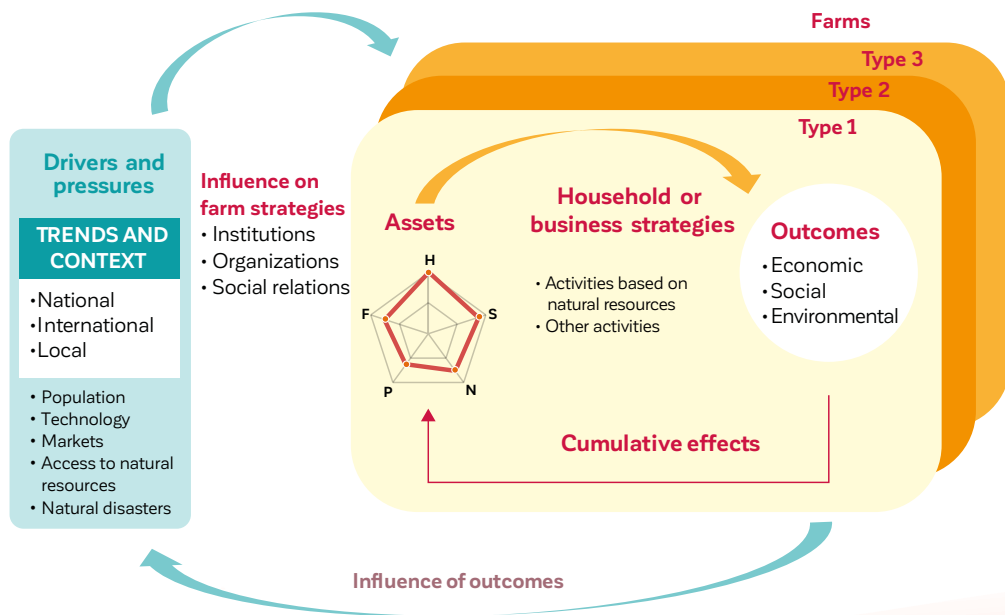
ECONOMIC

Tailored, inclusive
investments for the farm
holdings of all size

SOCIAL

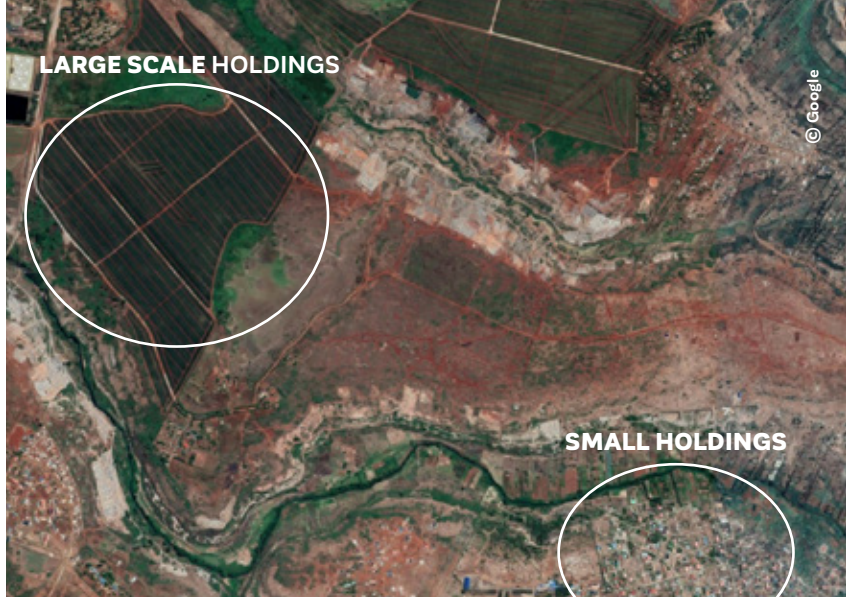
Combining investment with social
protection and access to public
goods and services

Farming transformation in a given territory





© Benedito Kurzen NCCR for FAO



© Google

↑ Contrasted sizes and productive models – In Thika Kenya

Monitoring transformation at territorial level

Farms and farming households help shape the dynamics of an area, as farming and other activities are based on interaction with natural resources (grazing, hunting and foraging, for example). Decision-making at household and farm level, therefore, takes place in a territorial context, framed by a particular set of resources (for example, farm and organizational density, market access or policy). These, in turn, will impact the natural assets of the farm and the territory more widely.

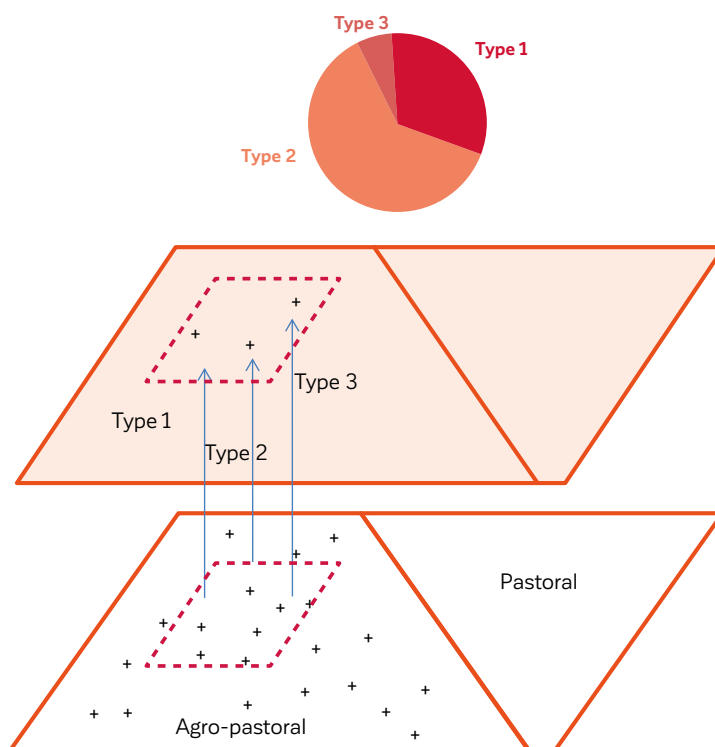
Territorial upscaling

WAW uses statistically representative benchmark farms to scale up results to the territorial level.

Territorial observation

- The major farming systems are monitored and analysed in a policy-relevant administrative unit.
- Stakeholders tailor the administrative unit to local issues and data collection and analysis efforts.

Summary of farm types in a given territory



World Agriculture Watch

Food and Agriculture Organization
of the United Nations
Land and Water Division (CBL)

Viale delle Terme di Caracalla 00153 Rome, Italy
Tel: (+39) 06 570 52795
E-mail: WAW-Secretariat@fao.org

www.fao.org/world-agriculture-watch

World Agriculture Watch (WAW) offers a comprehensive approach and tools to examine, analyse and monitor agricultural transformation around the world, to identify patterns and drivers of change and assess their impact. While WAW collects data on all types of farm, including industrial agriculture, it pays particularly close attention to family farms, to better tackle the constraints on their development through investment policies.

Sustainable Development
Goal contribution



United Nations
Decade of
FAMILY FARMING
2019-2028



Some rights reserved. This work is available under a [CC BY-NC-SA 3.0 IGO](https://creativecommons.org/licenses/by-nc-sa/3.0/) licence