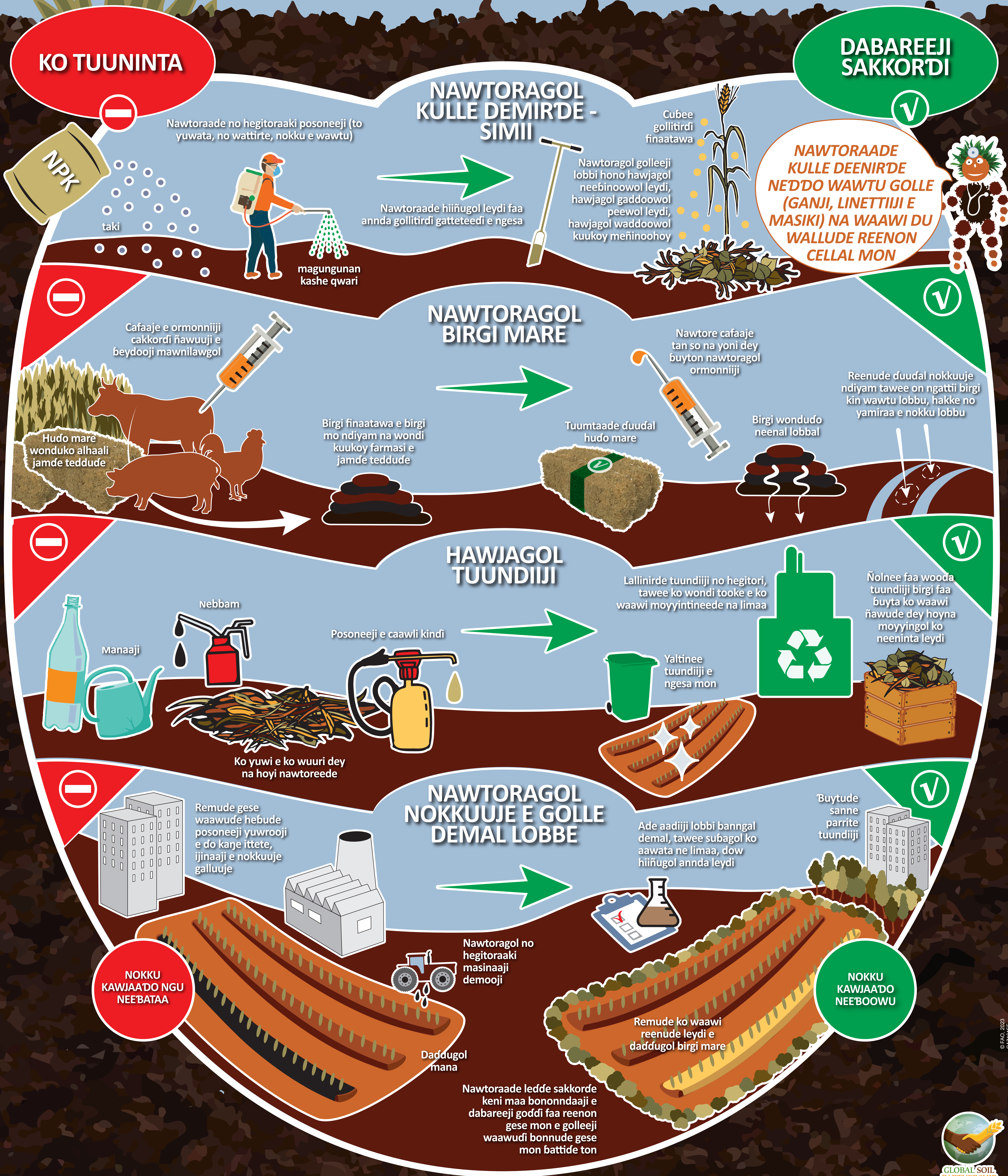


# Noy tuunugol leydi waawi sakkoreede ley gese?



**NAWTORAADDE KULLE DEENIRDE NEDDO WAWTU GOLLE (GANJI, LINETTIJI E MASIKI) NA WAAWI DU WALLUDE REENON CELLAL MON**

**NOKKU KAWJAADO NGU NEE'BATAA**

**NOKKU KAWJAADO NEE'BOOWU**

Nawtoraade ledde sakkorde keni maa bononndaaji e dabareeji godfi faa reenon gese mon e golleeji waawudi bonnude gese mon battide ton