



Challenges in the implementation of large-scale CAPI based data collection

Sangita Dubey

FAO Regional Office for Asia and the Pacific

Sangita.Dubey@fao.org

Anthony Burgard

Asian Institute of Technology

anthonyburgard@gmail.com

Outline

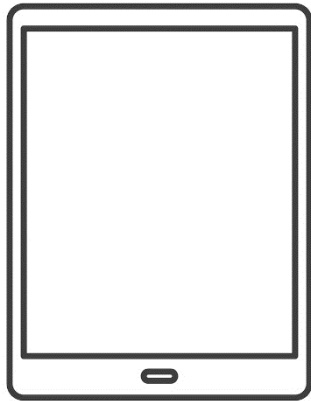
- Key issues in the adoption and implementation of CAPI Challenges and/or Obstacles
 - Transitioning to an electronic data collection system
 - Impact on work planning
 - Procurement and meeting peak capacity demand
- Proposed recommendations

<https://www.youtube.com/watch?v=Ouh2bCaRCLg>

Key issues in the adoption and implementation of CAPI

- The transition to CAPI represents the move towards to an electronic data collection system (data collection instrument [tablet, application], survey and case management)
- Implementation of CAPI requires the advancement of the traditional work plan, and has an increased role of IT teams and requirements of field support structures.
- Difficulties in addressing peak capacity needs for tablet-use and technology use in Census and other large-scale statistical activities

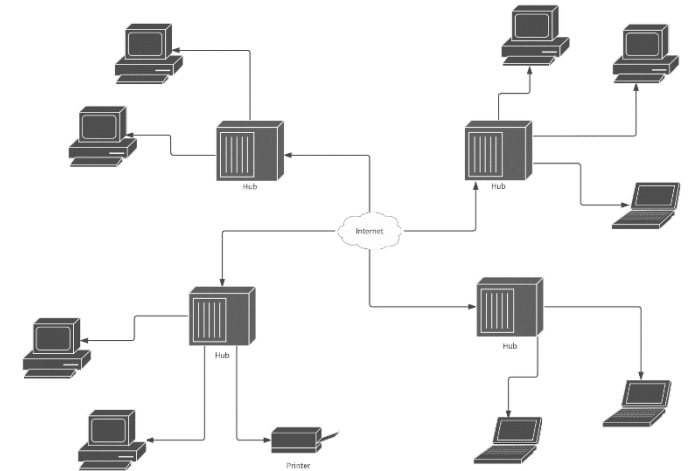
Transitioning to an electronic data collection system



Electronic Data collection instrument
With new sensors allowing for **NEW** data types

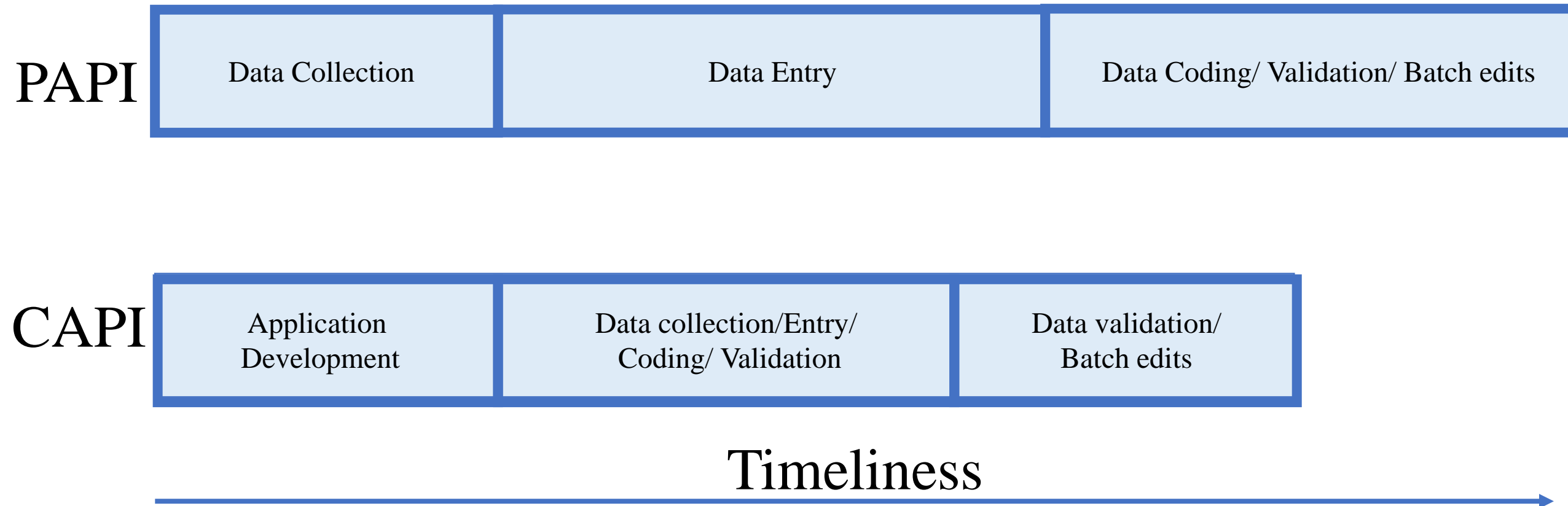


NEW technical skills are required (upskilling/outsourcing)



Planning procedures for survey and case management are *critical* in ensuring the flow of data

Implementation of CAPI requires the advancement of the traditional work plan



Meeting peak capacity demand for tablets in large-scale data collection activities

	Opportunities	Challenges
<p>Owned</p> <ul style="list-style-type: none"> • Own tablet (single/ planned obsolescence) • Shared resource within organization/ across government. • Shared resource across regions/ countries 	<ul style="list-style-type: none"> • Security and data privacy controls 	<ul style="list-style-type: none"> • Procurement (cost and time) • Maintenance and storage
<p>Services</p> <ul style="list-style-type: none"> • Procurement of rental services • Bring your own device 	<ul style="list-style-type: none"> • Maintenance, storage, insurance handled externally 	<ul style="list-style-type: none"> • Data Privacy • Compensation for bring your own device

Proposed Recommendations

- The Commission noted that the adoption of CAPI based data collection represents cost-efficiencies and requires increased time and planning, sufficient time for trial and testing, upskilling of human resources, and challenges in procurement and re-use of equipment.
- The Commission recommended countries and development partners explore and share innovative resource (tablet) sharing mechanisms to address peak capacity issues in large-scale statistical activities, and development partners coordinate technical assistance and hardware specifications to ensure efficiency and sustainability.

Thank you!

Ms Sangita Dubey
Sangita.Dubey@fao.org