



Food and Agriculture
Organization of the
United Nations

RURAL EMPLOYMENT

Integrated Country Approach (ICA)

for boosting
decent jobs for
youth in the
agri-food system

An overview of
country statistics on:

POPULATION & POVERTY

AGRICULTURE

EMPLOYMENT

FINANCE

DIGITAL LANDSCAPE

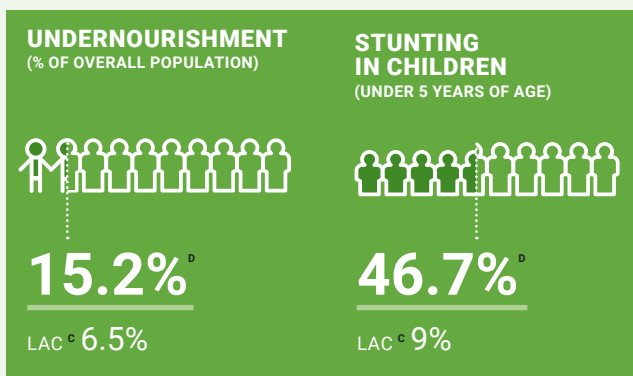
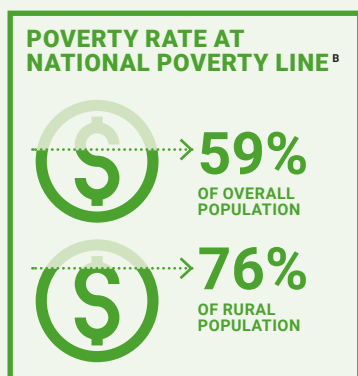
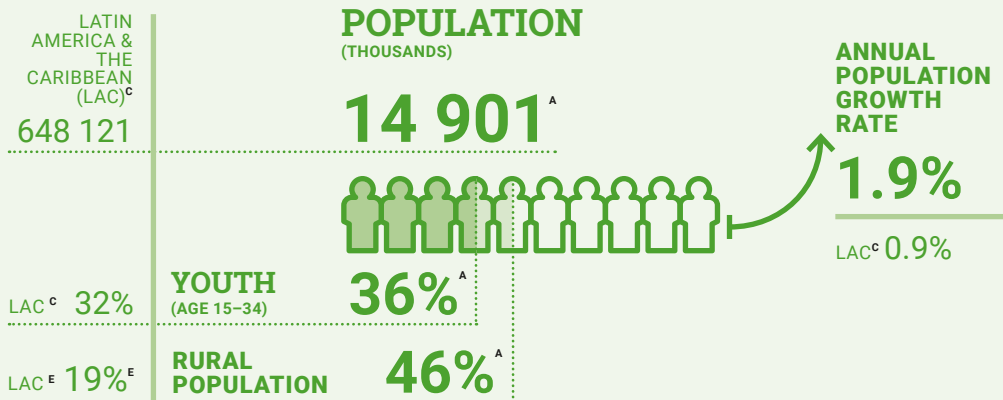
BUSINESS

REMITTANCES

GUATEMALA



POPULATION & POVERTY



Source: **A** INE, XII Censo Nacional de Población y Vivienda (2018); **B** Encuesta Nacional de Condiciones de Vida (INE, 2015); **C** The World Bank, World Development Indicators. Latest available figure as of February 2020; **D** FAO, SOFI; **E** United Nations Department of Economic and Social Affairs (UNDESA). Latest available figures as of February 2020.

AGRICULTURE

AGRICULTURE SHARE IN GDP

10% | LAC 5%



AGRICULTURE VALUE ADDED PER WORKER (CONSTANT 2010)

USD 3 047

LAC
USD 7 111



Source: The World Bank, World Development Indicators. Latest available figure as of February 2020.

EMPLOYMENT



EMPLOYMENT IN AGRICULTURE

% OF TOTAL EMPLOYMENT

33%^A | LAC 14%

OF YOUTH (AGE 15–29) **35%^A**

INFORMAL EMPLOYMENT

% OF TOTAL EMPLOYMENT

69.5%^A

FOR YOUTH

70.3%^A

YOUTH UNEMPLOYMENT

% OF TOTAL YOUTH LABOR FORCE



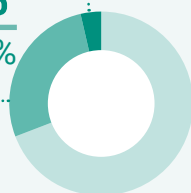
3.5%^A

LAC 18%

NOT IN EDUCATION,
EMPLOYMENT OR TRAINING
(NEET)

27.3%^B

LAC 22%



% OF
YOUTH FEMALE
LABOR FORCE

UNEMPLOYED

5.3%^A

LAC 21%

NEET

46.7%^B



% OF
YOUTH MALE
LABOR FORCE

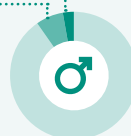
UNEMPLOYED

2.7%^A

LAC 15%

NEET

7.1%^B



**AVERAGE WAGE
IN AGRICULTURE^A**
(MONTHLY)*

GTQ 1 155

(USD 3.58/day rate as of
27 February, 2020)

GTQ 1 138

FOR YOUTH

At Q 10 000 a year (2014 PPP)



**WORKING
POVERTY
RATE**
(AGE 15–24)

AMERICAS

1.6%^B



6.3%^B

TYPE OF EMPLOYMENT (% OF TOTAL EMPLOYMENT)

EMPLOYERS

2.9%

CONTRIBUTING
FAMILY
WORKERS

8.4%

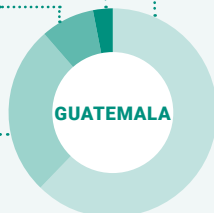
OWN-ACCOUNT
WORKERS

26.2%

WAGE AND
SALARIED
WORKERS

62.5%

GUATEMALA



CONTRIBUTING
FAMILY WORKERS

4.6%

EMPLOYERS

4.7%

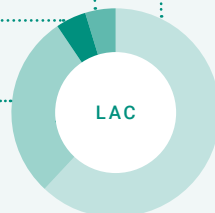
OWN-ACCOUNT
WORKERS

28.6%

WAGE AND
SALARIED
WORKERS

62.1%

LAC



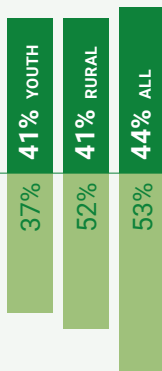
Source: **A** Instituto Nacional de Estadística (INE). 2018a. *Encuesta nacional de Empleo e Ingresos 2-2018*; **B** ILOSTAT. Latest available figure as of February 2020; **C** ICF, 2015. The DHS Program STATcompiler. Funded by USAID. www.statcompiler.com. February 21 2020. All the others: The World Bank, World Development Indicators. Latest available figure as of February 2020.

ACCESS TO FINANCE

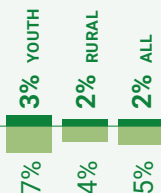
HAVE A FINANCIAL INSTITUTION ACCOUNT



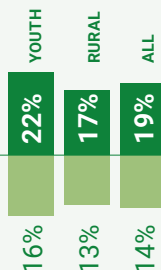
LAC GUATEMALA



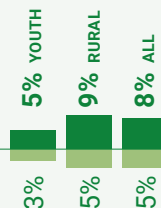
HAVE A MOBILE MONEY ACCOUNT



SAVED TO START, OPERATE, OR EXPAND A FARM OR BUSINESS



BORROWED TO START, OPERATE, OR EXPAND A FARM OR BUSINESS



Source: The World Bank, Global Findex 2017

DIGITAL LANDSCAPE

MOBILE SUBSCRIPTION

119%
OF TOTAL POPULATION



INTERNET USERS

65%
OF TOTAL POPULATION



Source: We Are Social & Hootsuite, 2020

DOING BUSINESS ENVIRONMENT

TIME REQUIRED TO START A BUSINESS

27 DAYS

LAC 39 DAYS



Source: The World Bank, World Development Indicators.
Latest available figure as of February 2020.

REMITTANCES SHARE IN GDP

→ **12%** | LAC 1.9%

Source:
The World Bank, 2018

This fact sheet is part of a series developed for the five countries of FAO's ICA programme, namely Guatemala, Kenya, Rwanda, Senegal, and Uganda.



SWEDISH INTERNATIONAL
DEVELOPMENT COOPERATION AGENCY

FOOD AND AGRICULTURE ORGANIZATION OF THE UNITED NATIONS

www.fao.org/rural-employment/work-areas/youth-employment/ica-programme



Some rights reserved. This work is available under a CC BY-NC-SA 3.0 IGO licence