



Food and Agriculture
Organization of the
United Nations

RURAL EMPLOYMENT

Integrated Country Approach (ICA)

for boosting
decent jobs for
youth in the
agri-food system

RWANDA

An overview of
country statistics on:

POPULATION & POVERTY

AGRICULTURE

EMPLOYMENT

FINANCE

DIGITAL LANDSCAPE

BUSINESS

REMITTANCES



POPULATION & POVERTY

POPULATION

(THOUSANDS)

12 627^A



ANNUAL POPULATION GROWTH RATE

2.6%^A

SSA 2.7%^E

SUB-SAHARAN AFRICA (SSA)

1066 283^E

YOUTH (AGE 15-34)

36%^A

SSA 35%^E

RURAL POPULATION

83%^A

SSA 60%^E

POVERTY RATE AT NATIONAL POVERTY LINE



38%^B
OF OVERALL POPULATION



43%^C
OF RURAL POPULATION

UNDERNOURISHMENT (% OF OVERALL POPULATION)^D



36.8%

SSA 22.5%

STUNTING IN CHILDREN (UNDER 5 YEARS OF AGE)^D



36.9%

SSA 32.1%

Source: **A** United Nations Department of Economic and Social Affairs (UNDESA). Latest available figures as of February 2020; **B** The World Bank, World Development Indicators. Latest available figures as of February 2020; **C** National Institute of Statistics of Rwanda. 2018. Rwanda Poverty Profile Report 2016/17; **D** FAO, IFAD, UNICEF, WFP and WHO. 2019. The State of Food Security and Nutrition in the World 2019. Safeguarding against economic slowdowns and downturns. Rome, FAO. Licence: CC BY-NC-SA 3.0 IGO; **E** United Nations Department of Economic and Social Affairs (UNDESA). Latest available figures as of February 2020.

AGRICULTURE

AGRICULTURE SHARE IN GDP

28%^A | SSA 16%



AGRICULTURE VALUE ADDED PER WORKER (CONSTANT 2010)

USD 602

SSA
USD 1515



Source: **A** National Institute of Statistics of Rwanda (NISR). 2019a. GDP - National Accounts (Fiscal Year 2018/19). Kigali, Rwanda. (also available at: www.statistics.gov.rw/publication/gdp-national-accounts-fiscal-year-201819). *All the others*: The World Bank, World Development Indicators. Latest available figure as of February 2020.

EMPLOYMENT



EMPLOYMENT IN AGRICULTURE

% OF TOTAL EMPLOYMENT

55.3% | SSA **54%**

OF YOUTH **62.2%**^A

INFORMAL EMPLOYMENT

% OF TOTAL EMPLOYMENT

77.6%^A

YOUTH UNEMPLOYMENT

% OF TOTAL YOUTH LABOR FORCE



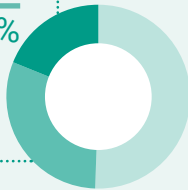
18.7%^B

SSA **13%**

NOT IN EDUCATION, EMPLOYMENT OR TRAINING (NEET) (AGE 15-24)^C

30.6%

AFRICA **20.7%**



% OF YOUTH FEMALE LABOR FORCE

UNEMPLOYED **17.1%**^B

SSA **14%**

NEET **36.2%**^C

AFRICA **25.7%**



% OF YOUTH MALE LABOR FORCE

UNEMPLOYED **13.5%**^B

SSA **13%**

NEET **24.6%**^C

AFRICA **15.7%**



AVERAGE WAGE IN AGRICULTURE

RWF 20 352

(USD 22/month)^A



WORKING POVERTY RATE

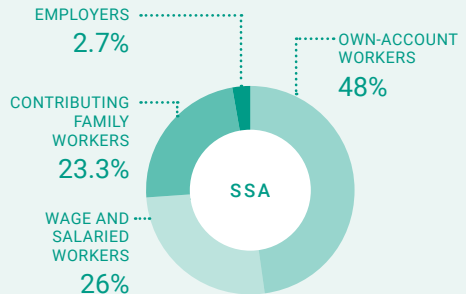
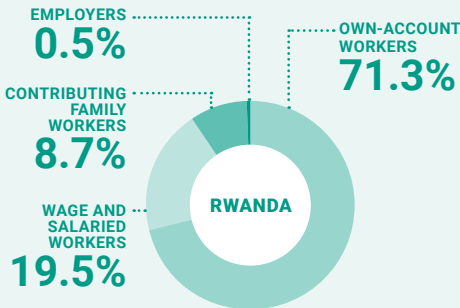
(AGE 15-24)^C



51.8%

AFRICA **38.4%**

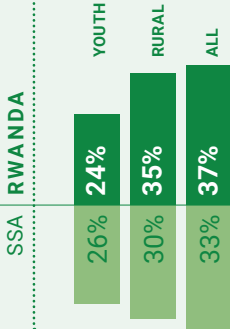
TYPE OF EMPLOYMENT (% OF TOTAL EMPLOYMENT)



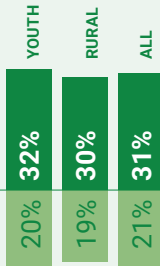
Source: **A** National Institute of Statistics of Rwanda (NISR). 2018a. Labour Force Survey Report 2018. Kigali, Rwanda. (also available at: www.statistics.gov.rw/publication/labour-force-survey-report-december-2018); **B** National Institute of Statistics of Rwanda (NISR). 2018b. Integrated Household Living Conditions Survey (EICV5) - Youth Thematic Report. Kigali, Rwanda. (also available at: www.statistics.gov.rw/publication/eicv5thematic-report-youth); **C** ILOSTAT. Latest available figures as of February 2020; **D** ICF, 2015. The DHS Program STATcompiler. Funded by USAID. www.statcompiler.com. February 21 2020. *All the others*: The World Bank, World Development Indicators. Latest available figure as of February 2020.

ACCESS TO FINANCE

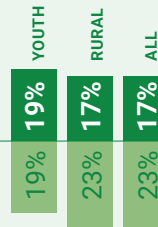
HAVE A FINANCIAL INSTITUTION ACCOUNT



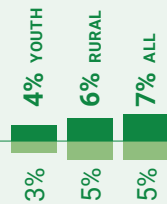
HAVE A MOBILE MONEY ACCOUNT



SAVED TO START, OPERATE, OR EXPAND A FARM OR BUSINESS



BORROWED TO START, OPERATE, OR EXPAND A FARM OR BUSINESS



Source: The World Bank, Global Findex 2017

DIGITAL LANDSCAPE

MOBILE SUBSCRIPTION

73%
OF TOTAL POPULATION



INTERNET USERS

26%
OF TOTAL POPULATION



Source: We Are Social & Hootsuite, 2020

DOING BUSINESS ENVIRONMENT

TIME REQUIRED TO START A BUSINESS

4 DAYS

SSA **28 DAYS**



Source: The World Bank, World Development Indicators. Latest available figure as of February 2020.

REMITTANCES SHARE IN GDP

2.7% | SSA **2.8%**

Source: The World Bank, 2018

This fact sheet is part of a series developed for the five countries of FAO's ICA programme, namely Guatemala, Kenya, Rwanda, Senegal, and Uganda.



SWEDISH INTERNATIONAL DEVELOPMENT COOPERATION AGENCY

FOOD AND AGRICULTURE ORGANIZATION OF THE UNITED NATIONS

www.fao.org/rural-employment/work-areas/youth-employment/ica-programme



Some rights reserved. This work is available under a CC BY-NC-SA 3.0 IGO licence