



Food and Agriculture Organization
of the United Nations

The Hand-in-Hand Initiative

Progress Update

Máximo Torero
Chief Economist

FAO Regional Conference For Africa, Thirty-first Session
27 October 2020

Hand-in-Hand Initiative

**A new, holistic approach to support
food and agriculture development**

Guiding principles

for analytical framework



Framework

Recall the initial objective

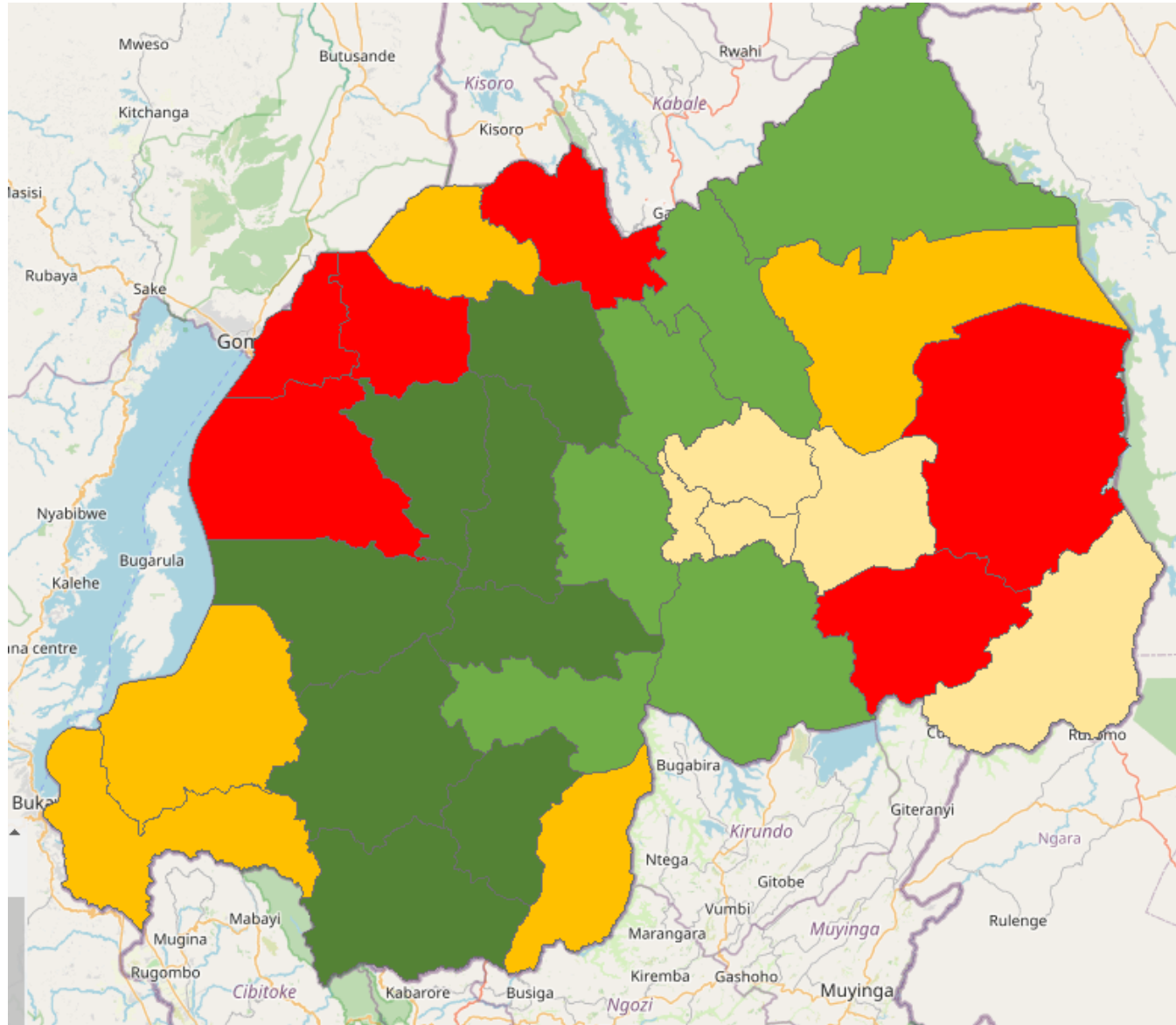
Low-potential and
low-average efficiency

- Critical, lacking agricultural potential
- Medium priority, no agricultural opportunities
- Low priority

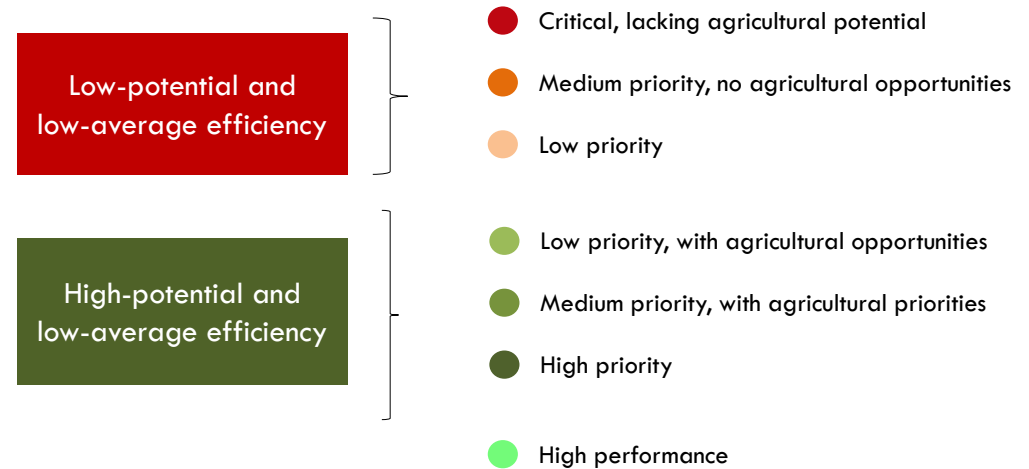
High-potential and
low-average efficiency

- Low priority, with agricultural opportunities
- Medium priority, with agricultural priorities
- High priority
- High performance

Framework



Grouping diverse criteria into 7 micro-regions



Framework

High priority



Framework

Opportunities to drive transformation

Efficient Supply Chains

- 1. Inclusive supply chains.** Improve rural livelihoods for commercial smallholder farmers, SMEs.
- 2. Food chain improvement.** Efficiently process, store, transport food. Reduce losses, enhance nutrition.
- 3. Enabling policies.** Improve policies reducing distortions; improve incentives for private sector participation.

Framework

Opportunities to drive transformation

Sustainability Standards & Practices

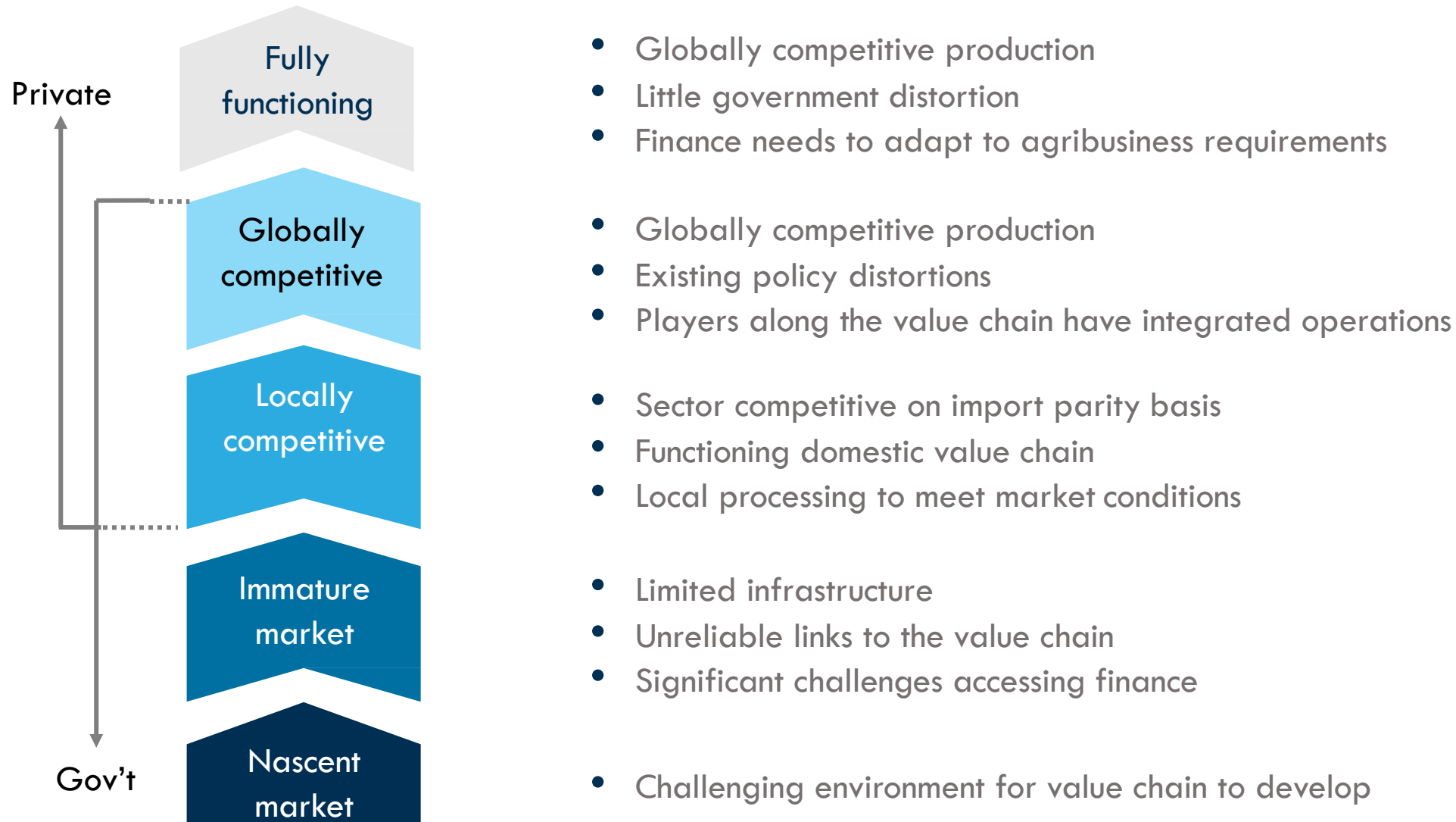
- 4. Climate-smart agriculture practices.** Ease pressure on natural resources.
- 5. Clear global standards.** Ensure efficient use of land, water, labor.

Innovation & Technology

- 6. Technology improvements.** Increase yield, resource productivity, nutrition, traceability, disease control.
- 7. Business and financial model innovations.** Provide better products, services to farmers and value chain actors.

Framework

Market segmentation model for identifying interventions





Handshake

- ☐ Government request received
- ☐ FAO Country Support Task Force formed



Country Teams

- ☐ FAOR
- ☐ Country focal point
- ☐ Sub-regional
- ☐ Regional
- ☐ HQ
- ☐ Investment Centre
- ☐ OER
- ☐ Additional country support

Technical Cooperation Programme (TCP)

- ☐ Funds available
- ☐ TCP formulated
- ☐ TCP approved



Situation Analysis

BACKGROUND DOCUMENTS

- ☐ Reports collected
- ☐ IFI project loan reports collected

DONOR MAPPING

- ☐ List of donors compiled
- ☐ Information on how and where the donors are active gathered
- ☐ Geospatially referenced donor mapping complete

DATA ASSESSMENT

- ☐ Poverty/hunger maps collected
- ☐ Additional data layers for typologies selected
- ☐ Mapping of territories completed

TYPOLOGIES ANALYSIS

- ☐ Market assessment conducted
- ☐ Stochastic profitability frontier analysis conducted
- ☐ Typologies created



Initial Assessment

- ☐ Target regions identified
- ☐ Field mission conducted
- ☐ Presentation given to FAO HIH core group



Dialogue with Gov't

- ☐ Presentation given to the the Government and endorsement received
- ☐ The proposal is used to begin the process of developing the Program Investment Plan



Partner Matchmaking

NATIONAL, LOCAL

- ☐ Local government
- ☐ Producers, farmers' orgs, SMEs and others
- ☐ Local private sector
- ☐ Local financial institutions
- ☐ Civil society

INTERNATIONAL

- ☐ Donors
- ☐ International financial institutions
- ☐ Private sector
- ☐ Civil society
- ☐ Research institutes
- ☐ UN agencies



Executive Roundtable Consultations

- ☐ Plan for executive roundtable(s) agreed with the Government and partners
- ☐ Executive roundtable(s) completed



Program Investment Plan (PIP)

- ☐ Draft comprehensive PIP completed — with funding, financing and in-kind commitments from all actors included
- ☐ PIP endorsed by the Government and all actors



Dashboard Implementation

- ☐ Dashboard designed on basis of PIP
- ☐ Dashboard implemented on basis of PIP

Country Task Team

**To coordinate support
across the programme**

Composition of partners in countries

- Governments
- Donors
- Private sector
- IFIs (WBG, IADB, AFDB)
- Academic institutions
- Civil society organizations

Composition of task forces of FAO

- Country office lead
- Sub-regional office lead
- Regional office lead
- Investment centre
- HQ coordinator
- Poverty, hunger/malnutrition and crisis country leads (OER)
- Technical leads

HH Geospatial platform



- FAO partnered with leading technology companies and public data providers to build the platform, including:
 - Google
 - Google Earth Engine
 - IBM
 - World Bank
 - IFPRI
 - Gates Foundation
 - USAID
 - EU
 - Chinese Academy of Agricultural Sciences
 - Beijing Academy of Agricultural and Forest Sciences
 - IPCinfo
- “Training of trainers” taking place to meet the demand from Members to access the platform’s resources. Those trained will train other groups, and online modules will be developed.

HIH Data Lab

- Uses unofficial, unstructured data, data science methods and access to remote sensing to validate and collect data
- 3 streams of work on the use of big data and data science
 - Text-mining techniques
 - Geospatial data science
 - Big data solutions (web scrapping, crowdsourcing, machine learning)
- The lab is also supporting COVID-19 response

FAO Data Lab

ABOUT PRODUCTS COLLABORATIONS METHODS & AREAS OF WORK CONTACT

Some highlights: Drought conditions have been exacerbated by the weather phenomenon known as El Niño, which is causing a drought in the United States, Brazil and Russia that is affecting the production of wheat and soybeans, and floods in South and Southeast Asia, which is delaying the harvests of rice in Bangladesh, Thailand and Vietnam, and is flooding palm oil plantations in Indonesia and Malaysia.

The Data Lab for Statistical Innovation

Official statistical systems are facing difficulties posed by reduced budgets, cultural changes and new competitors on the market, which create data gaps as a consequence. These gaps are widened by emergency contexts, when having access to timely information is very important. The FAO is adapting to this crisis of the traditional data collection system by modernizing the statistical business process through the activities of the Data Lab for Statistical Innovation. [Read more...](#)

DataLab products

Social unrest analysis tool

Covid-19 impact analysis

Daily & monthly news digests

News search

Daily food prices

Use of statistics in policy

DataLab areas of work

Filling gaps of statistical data

Analysis of (social) media

Analysis of legislation and policies

Use of geo-spatial data in agriculture statistics

Executive Roundtables

To bring everyone together to
define priorities and gaps

- The Executive Roundtables engage stakeholders to identify ground-level issues and key impediments and formulate strategies to address constraints and gaps.
- The roundtables align the Hand-in-Hand Initiative's involvement with the national government's development priority and the UN Cooperative Framework.
- The knowledge gained from the roundtables is used by the **FAO Investment Center** to develop a **Programme Investment Plan** in consultation with the host government and its diverse partners.

HIH Dashboard

for Impact Evaluation

- The dashboard establishes whether countries are **on track and on target** to meet national targets for SDG 1 and SDG 2
- It will use a red-yellow-green scorecard system
 - **Red**: country is off track and off target to meet SDG1 and SDG2
 - **Yellow**: on track, but off target
 - **Green**: on track and on target. Example: Burkina Faso's target is to reduce the poverty rate from 43.7% to 21.7% by 2023. Currently, it has a green mark.
- The first benchmarks will be released in 2023

Progress at a Glance

Jun – Oct 2020

HIH Africa

- ❖ 11 Countries have given formal notice of desire to participate; several others actively considering participation
- ❖ Different entry points based on existing programming
- ❖ HIH principles apply in all countries, with commitment to:
 - ✓ Eradicating poverty and ending hunger,
 - ✓ Improved technical analysis and decision support,
 - ✓ Broad matchmaking approach to partnership development,
 - ✓ Commitment to mobilizing means of implementation, and
 - ✓ Implementation of dashboards across all HIH countries.

Beneficiary countries

(as of 20 October 2020)

	Afghanistan	1		Guinea-Bissau	11		Pakistan	20
	Angola	2		Haiti	12		Papua New Guinea	21
	Bangladesh	3		Honduras	13		Peru	22
	Burkina Faso	4		Kiribati	14		Rwanda	23
	Cape Verde	5		Lao PDR	15		Solomon Islands	24
	Ecuador	6		Mali	16		Syria	25
	El Salvador	7		Nepal	17		Tajikistan	26
	Ethiopia	8		Niger	18		Tuvalu	27
	Gabon	9		Nigeria	19		Yemen	28
	Guatemala	10					Zimbabwe	29

The Hand-in-Hand Initiative

Milestones

