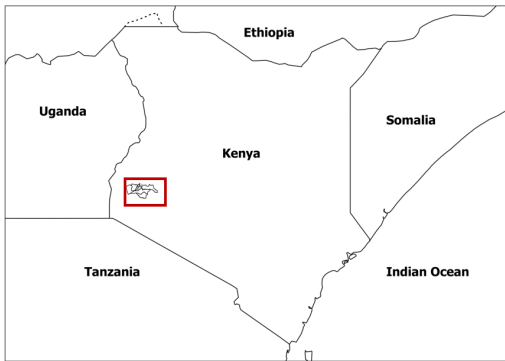




Identifying priority areas for plantation around parcels in Jimo Middle, Kisumu, Kenya



To prioritize the areas for tree and hedgerow plantation around parcels in Jimo Middle of Kisumu, the delineated parcels (obtained at 5 m resolution) were overlaid over degraded, stable and improved area (measure of SDG 15.3.1), to classify under high, medium and low priority plantation classes respectively.

Source: UN. 2020. Map of the world [online]. [Cited February 2022]

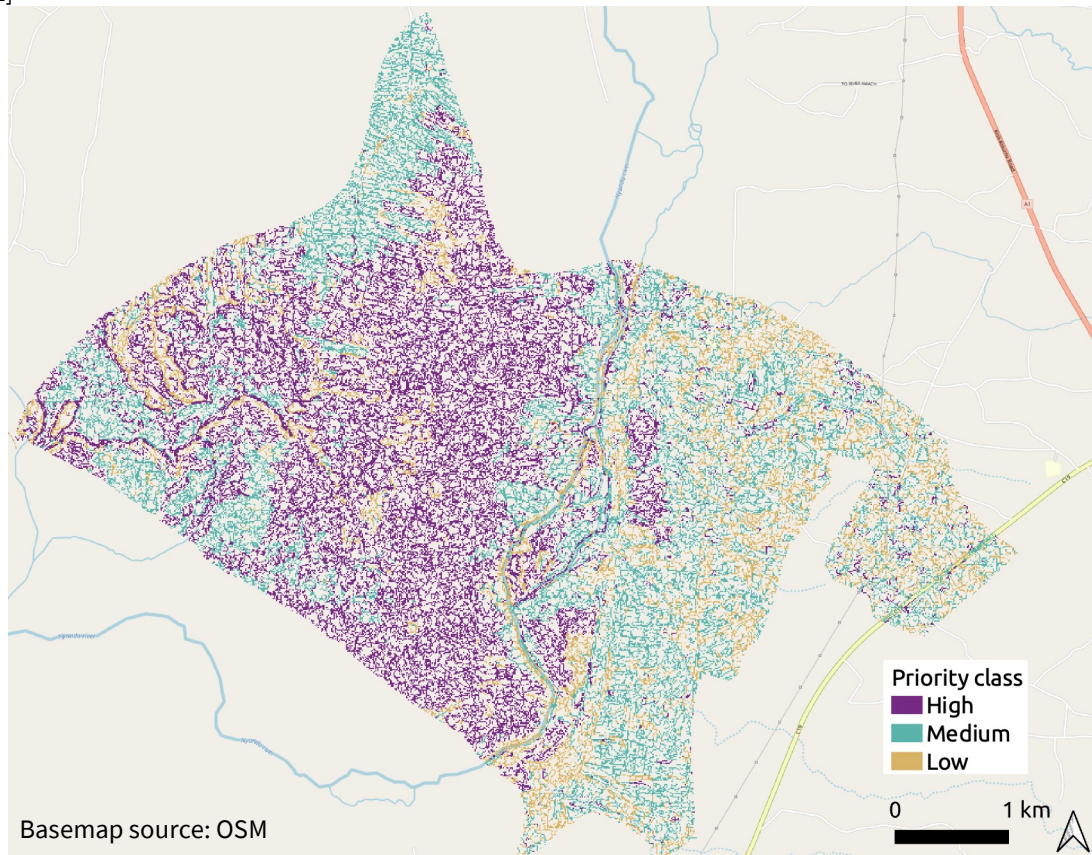


Figure 1: Spatial extent of priority class areas (5m x 5m) for tree and hedgerow plantation around parcels in Jimo Middle sub-location, Kisumu, Kenya¹

Table 1: Area available for plantation around parcels in Jimo Middle, Kisumu, Kenya

Class	Area (ha)
High	476.5
Medium	364.2
Low	197.8
Total	1 038.6