

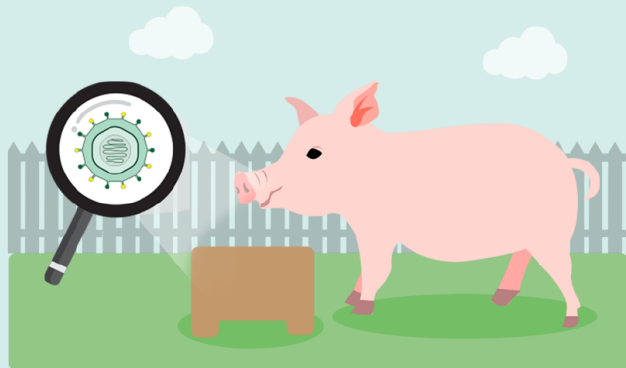


Food and Agriculture
Organization of the
United Nations



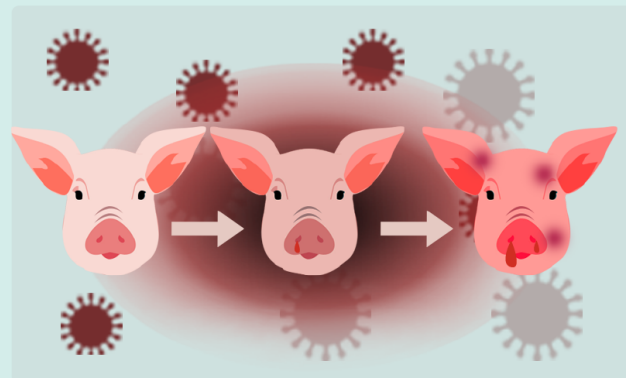
What is **SWILL FEEDING** ?

Swill feed is food waste (raw, cooked and processed) from households, restaurants, meat processing plants or dumpsters.



Why is it not allowed?

It can be contaminated with "exotic diseases" or diseases that can be transmitted to pigs or other animals.



How does it spread African swine fever (ASF)?

When a pig eats swill that is contaminated with the ASF virus, the pig will be infected with ASF. A farm contaminated with ASF puts other farms at risk.

For more information, please contact RAP-ECTAD-Manager@fao.org.