



Source: UN. 2020. Map of the world [online]. [Cited February 2022]

Crop mask for Kisumu (Kenya) was prepared to assess the potential impact of flood on cropland. The crop mask was prepared from land cover generated using the 2008 Africover legend for Kisumu, Kenya. The samples were trained with a machine learning model in Google Earth Engine and Sentinel 1 & 2 imageries were classified. The crop mask was obtained at 10m spatial resolution.

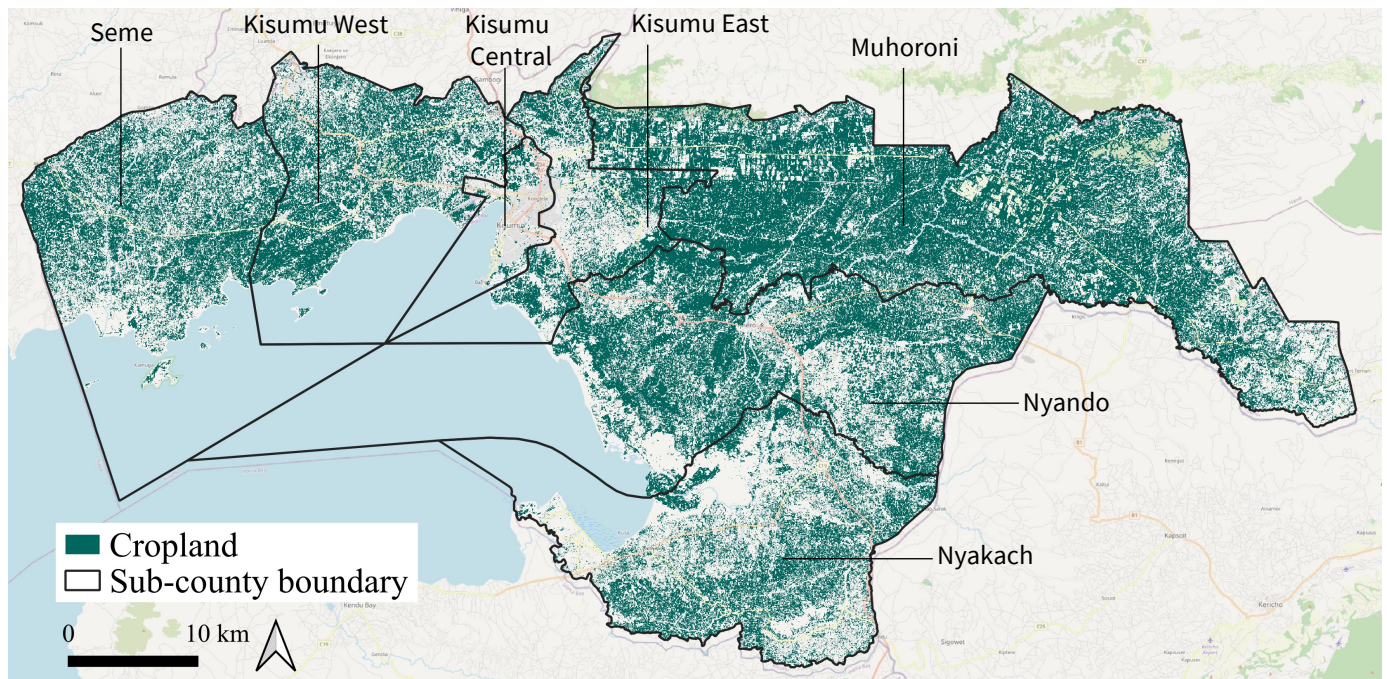


Figure 1: Spatial extent of cropland in year 2021<sup>1</sup>

Table 1: Land area extent (in ha and %) of cropland in year 2021

Sub-county	Area	Cropland percent
Muhoroni	41 208	65
Nyando	11 152	53
Seme	21 911	53
Nyakach	13 377	50
Kisumu West	5 464	42
Kisumu East	12 489	36
Kisumu Central	635	16
<b>Total</b>	<b>106 236</b>	<b>45</b>

### Key Findings

- Total cropland area: 106 236 ha
- Average cropland percent : 45 %
- Wards with high percent of cropland (top three):
  - Muhoroni: 65%
  - Nyando: 53%
  - Seme: 53%