



Source: United Nations. 2020. Map of the world [online]. [Cited July 2022]

Geospatial datasets are prepared and mapped to assess and monitor the performance of nature-based solutions (NBS) indicators for Thanh Chuong and Con Cuong districts in Viet Nam.

The NBS indicators are scalable and applicable to support projects in multi-disciplinary sectors (like forestry, agriculture, food security) and combine various datasets such as land cover, carbon, productivity, crop, soil and many others.

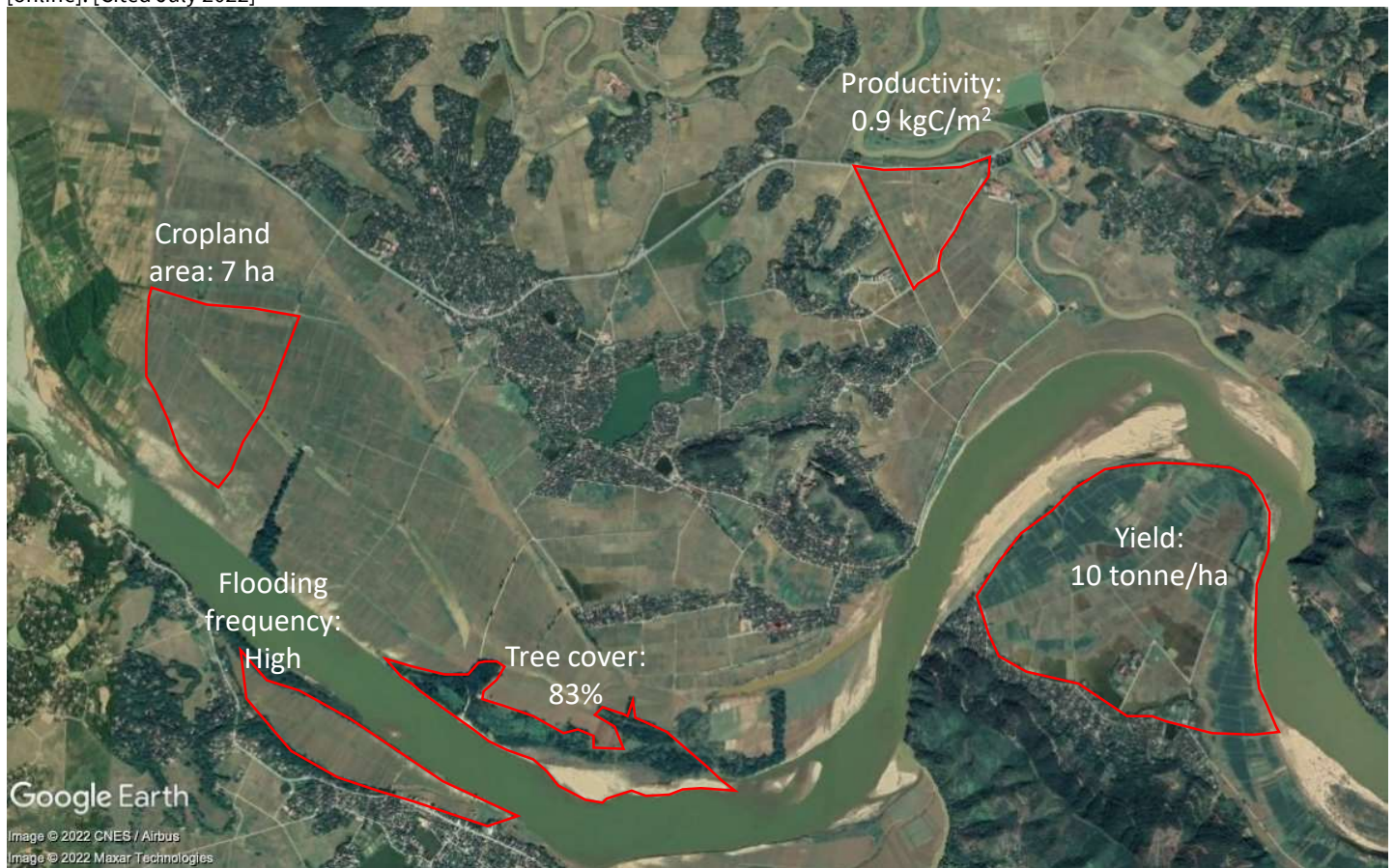


Figure 1: Exemplification of nature-based solutions indicators and datasets  
Table 1: Indicators based on functions of nature-based solutions in agriculture<sup>1</sup>

<p><b>Sustainable practices</b></p> <ul style="list-style-type: none"> <li>• Yield</li> <li>• Land cover change</li> <li>• Microclimate</li> <li>• Land degradation</li> <li>• Cropland area</li> <li>• [...]</li> </ul>	<p><b>Green infrastructure</b></p> <ul style="list-style-type: none"> <li>• Flooding frequency</li> <li>• Drought</li> <li>• Soil erosion</li> <li>• Exposure to flood</li> <li>• Landslide</li> <li>• [...]</li> </ul>	<p><b>Amelioration</b></p> <ul style="list-style-type: none"> <li>• Biomass</li> <li>• Soil organic carbon</li> <li>• Productivity</li> <li>• Land degradation</li> <li>• Soil moisture</li> <li>• Evapotranspiration</li> <li>• [...]</li> </ul>	<p><b>Conservation</b></p> <ul style="list-style-type: none"> <li>• Tree cover</li> <li>• Forest cover change</li> <li>• Forest fragmentation</li> <li>• Protected area</li> <li>• Wetland</li> <li>• [...]</li> </ul>
--	---	---	--

Acknowledgement: The assessments were developed with the financial support of the government of Ireland.

Prepared by Shrijwal Adhikari, Amit Ghosh, Fatima Mushtaq, Beau Damen, Matieu Henry in close collaboration with World Agroforestry (ICRAF) and Asian Institute of Technology (AIT) for Monitoring of geospatial indicators for nature-based solutions. Food and Agriculture Organization of United Nations, Rome, Italy.

<sup>1</sup>Simelton et al. (2021). Nature-based solutions framework for agricultural landscapes

The boundaries and names shown, and the designations used on these map(s) do not express any opinion whatsoever on the part of FAO concerning the legal status of any country, territory, city or area or of its authorities, or concerning the delimitation of its frontiers and boundaries. Dashed lines on maps represent approximate border lines for which there may not yet be full agreement.