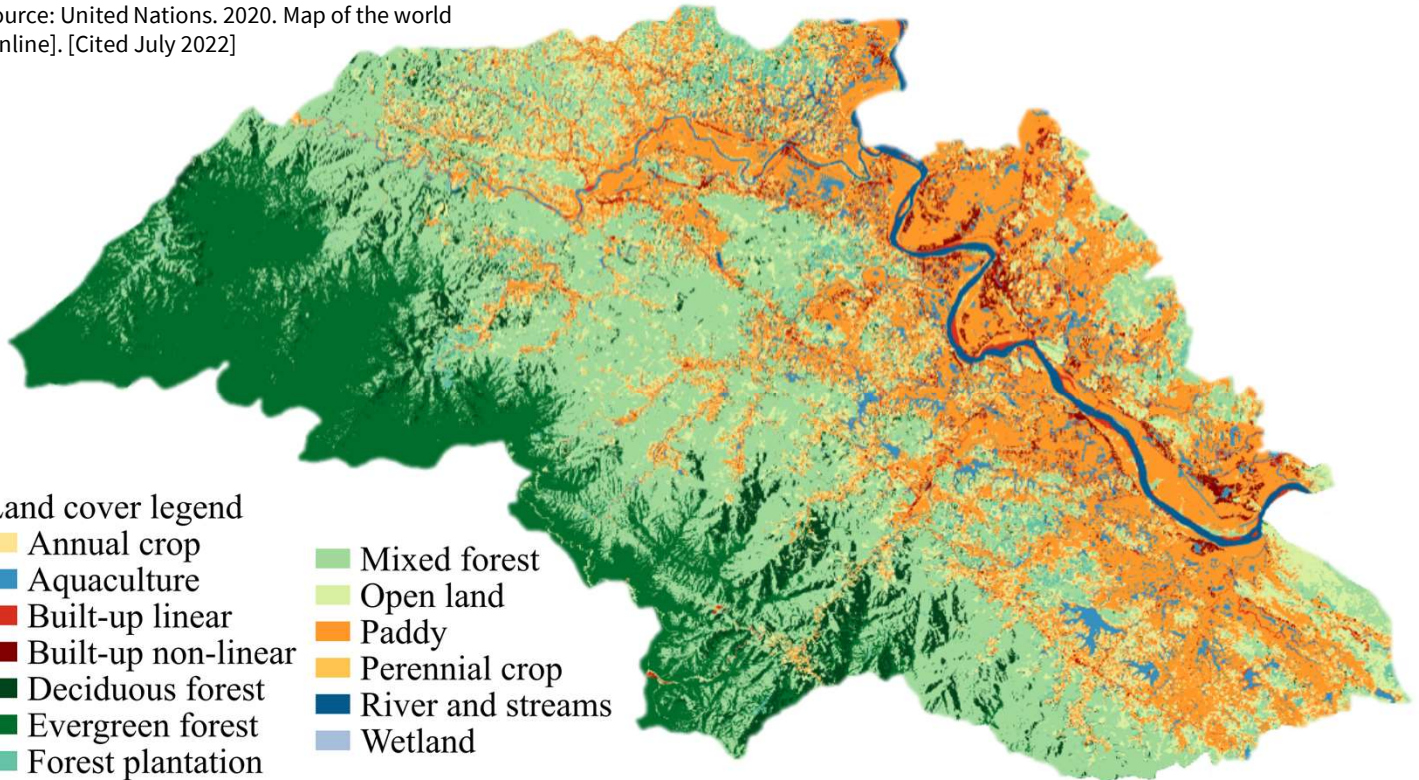




Land cover for Thanh Chuong district of Viet Nam was prepared for 2021 to assess the performance of nature-based solutions indicators in Viet Nam. The national land cover (LC) legends were derived and modified from the department of agriculture and rural development (DARD) dated 2019. Sentinel 1, 2 and Planet imageries were used for classification to obtain LC at 5m spatial resolution.

Source: United Nations. 2020. Map of the world [online]. [Cited July 2022]



Land cover legend

- Annual crop
- Aquaculture
- Built-up linear
- Built-up non-linear
- Deciduous forest
- Evergreen forest
- Forest plantation
- Mixed forest
- Open land
- Paddy
- Perennial crop
- River and streams
- Wetland



Figure 1: Land cover map (5m x 5m) for 2021 in Thanh Chuong district of Viet Nam derived and modified from national LC legends (2019 DARD)

Table 1: 2021 land cover class extent (in ha and %) of Thanh Chuong district

Class	Area (ha)	Percent (%)	Class	Area (ha)	Percent (%)
Mixed forest	32 588	26.8	Aquaculture	5 451	4.5
Paddy	25 349	20.8	Forest plantation	3 156	2.6
Evergreen forest	21 067	17.3	Built-up linear	2 202	1.8
Open land	9 350	7.7	Built-up non-linear	1 926	1.6
Annual crop	7 328	6.0	River streams	1 296	1.1
Deciduous forest	6 010	4.9	Wetland	164	0.1
Perennial crop	5 873	4.8	Total (all classes)	121 759	100

Acknowledgement: The assessments were developed with the financial support of the government of Ireland.

Prepared by Shrijwal Adhikari, Amit Ghosh, Fatima Mushtaq, Beau Damen, Matieu Henry in close collaboration with World Agroforestry (ICRAF) and Asian Institute of Technology (AIT) for Monitoring of geospatial indicators for nature-based solutions. Food and Agriculture Organization of United Nations, Rome, Italy.

¹ GADM. The boundaries and names shown, and the designations used on these map(s) do not express any opinion whatsoever on the part of FAO concerning the legal status of any country, territory, city or area or of its authorities, or concerning the delimitation of its frontiers and boundaries. Dashed lines on maps represent approximate border lines for which there may not yet be full agreement.