



Source: United Nations. 2020. Map of the world [online]. [Cited July 2022]

Land cover for Con Cuong district of Viet Nam was prepared for 2021 to assess the performance of nature-based solutions indicators in Viet Nam. The national land cover (LC) legends were derived and modified from national department of agriculture and rural development (DARD) dated 2019. Sentinel 1, 2 and Planet imageries were used for classification to obtain LC at 5m spatial resolution.

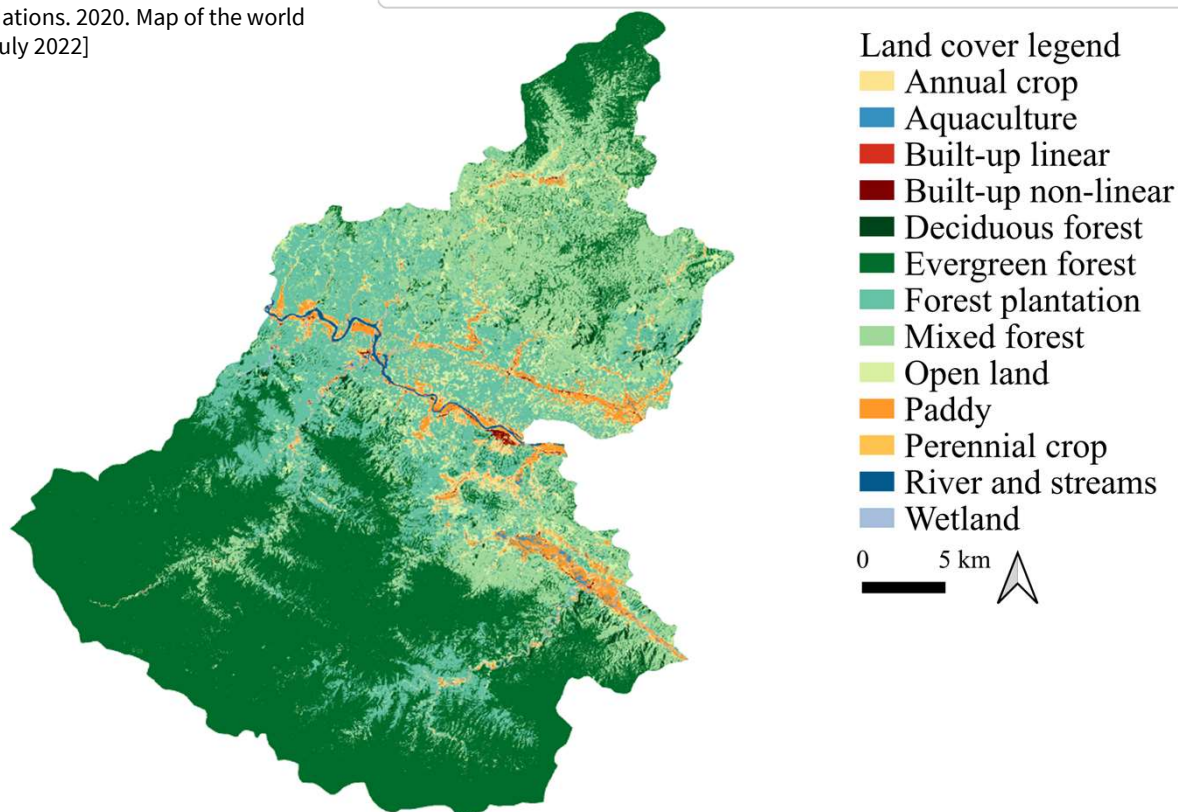


Figure 1: Land cover map (5m x 5m) for 2021 in Con Cuong district derived and modified from national LC legends (2019 DARD) of Viet Nam

Table 1: 2021 land cover class extent (in ha and %) of Con Cuong district

Class	Area (ha)	Percent (%)	Class	Area (ha)	Percent (%)
Evergreen forest	91 574	48.7	Wetland	805	0.4
Forest plantation	38 615	20.5	Perennial crop	629	0.3
Mixed forest	33 407	17.8	River streams	617	0.3
Open land	10 488	5.6	Aquaculture	554	0.3
Paddy	4 698	2.5	Built-up non-linear	386	0.2
Annual crop	4 153	2.2	Built-up linear	238	0.1
Deciduous forest	1 760	0.9	<b>Total (all classes)</b>	<b>187 925</b>	<b>100</b>

Acknowledgement: The assessments were developed with the financial support of the government of Ireland.

Prepared by Shrijwal Adhikari, Amit Ghosh, Fatima Mushtaq, Beau Damen, Matieu Henry in close collaboration with World Agroforestry (ICRAF) and Asian Institute of Technology (AIT) for Monitoring of geospatial indicators for nature-based solutions. Food and Agriculture Organization of United Nations, Rome, Italy.

<sup>1</sup> [GADM](#). The boundaries and names shown, and the designations used on these map(s) do not express any opinion whatsoever on the part of FAO concerning the legal status of any country, territory, city or area or of its authorities, or concerning the delimitation of its frontiers and boundaries. Dashed lines on maps represent approximate border lines for which there may not yet be full agreement.