



Source: United Nations. 2020. Map of the world [online]. [Cited July 2022]

To measure the land degradation (SDG 15.3.1) in Thanh Chuong district of Viet Nam, annual net primary productivity (NPP) (input data to SDG 15.3.1) of 2021 was obtained from MODIS. The data were obtained at 500m spatial resolution and aggregated into Thanh Chuong townlets for comparative assessment.

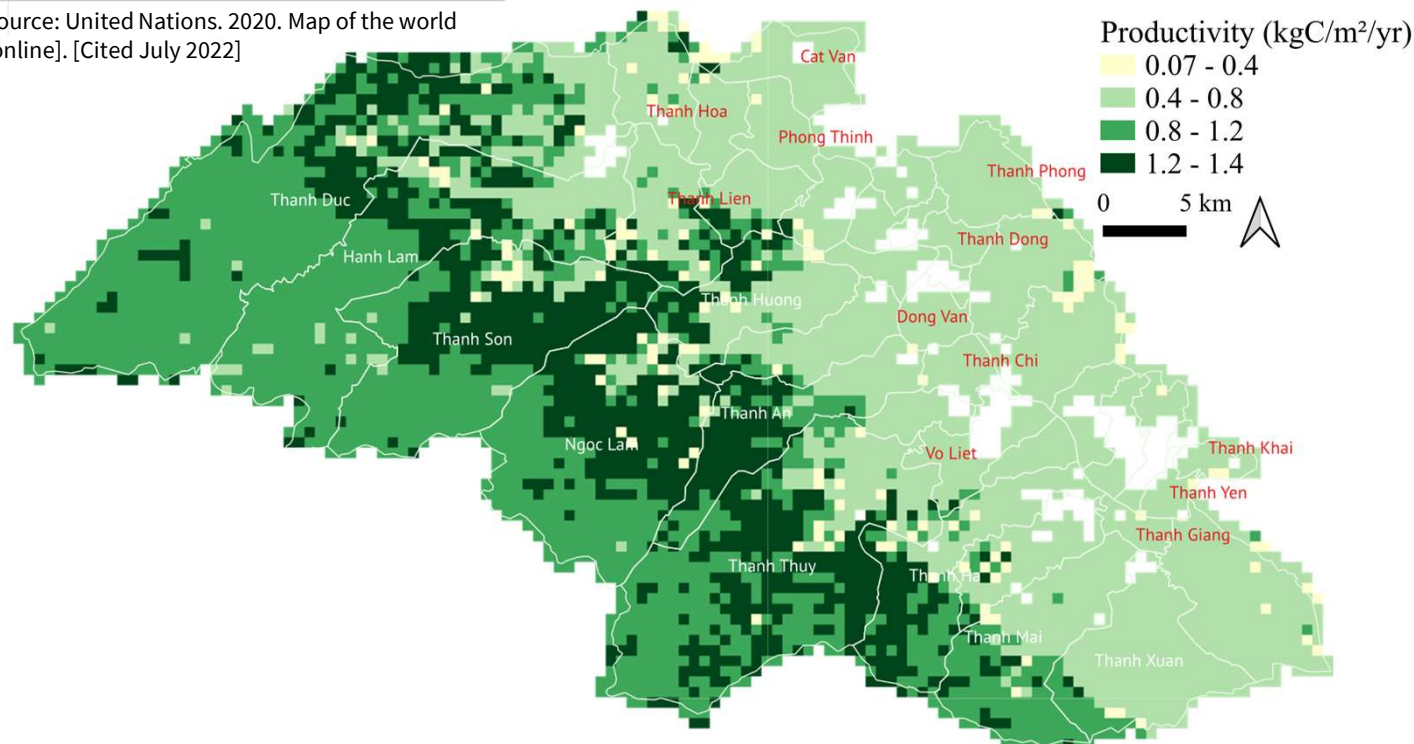


Figure 1: Spatial extent of annual net primary productivity for 2021 (500m x 500m grid) in Thanh Chuong, Viet Nam<sup>1</sup>

Table 1: Average annual net primary productivity for 2021 in Thanh Chuong

	Townlets	Land area (thousand ha)	Mean (kgC/m <sup>2</sup> /yr)	Range (kgC/m <sup>2</sup> /yr)		Total (Gg C/yr)
				Min.	Max.	
Top four	Cat Van	16.3	1.1	0.3	1.3	175.5
	Dong Van	11.8	1.1	0.3	1.3	135.7
	Hanh Lam	9.9	1.1	0.3	1.3	105.1
	Ngoc Lam	8.8	1.2	0.3	1.4	102.7
Bottom four	Xuan Tuong	0.2	0.3	0.5	0.7	0.7
	Vo Liet	0.3	0.4	0.4	0.5	1.1
	Thanh Yen	0.5	0.4	0.4	0.6	2.3
	Thanh Xuan	0.6	0.4	0.4	0.7	2.6

### Key Findings

Net primary productivity (NPP) in Thanh Chuong district:

- Land area (ha): 112 263,
- Density (kgC/m<sup>2</sup>/yr): 0.7,
- Range (kgC/m<sup>2</sup>/yr): 0.07 – 1.4,
- Total NPP (Tg): 1.04.

Acknowledgement: The assessments were developed with the financial support of the government of Ireland.

Prepared by Shrijwal Adhikari, Amit Ghosh, Fatima Mushtaq, Beau Damen, Matieu Henry in close collaboration with World Agroforestry (ICRAF) and Asian Institute of Technology (AIT) for Monitoring of geospatial indicators for nature-based solutions. Food and Agriculture Organization of United Nations, Rome, Italy.

<sup>1</sup> GADM. The boundaries and names shown, and the designations used on these map(s) do not express any opinion whatsoever on the part of FAO concerning the legal status of any country, territory, city or area or of its authorities, or concerning the delimitation of its frontiers and boundaries. Dashed lines on maps represent approximate border lines for which there may not yet be full agreement.