



Source: United Nations. 2020. Map of the world [online]. [Cited July 2022]

The land degradation (SDG 15.3.1) was measured in Con Cuong district of Viet Nam for the period 2016-2021 to provide support for deriving the nature-based solutions indicators. The assessment was carried on SDG 15.3.1 module of SEPAL<sup>1</sup> and the results were obtained at 30m spatial resolution; which were further aggregated into Con Cuong townlets for comparative assessment.

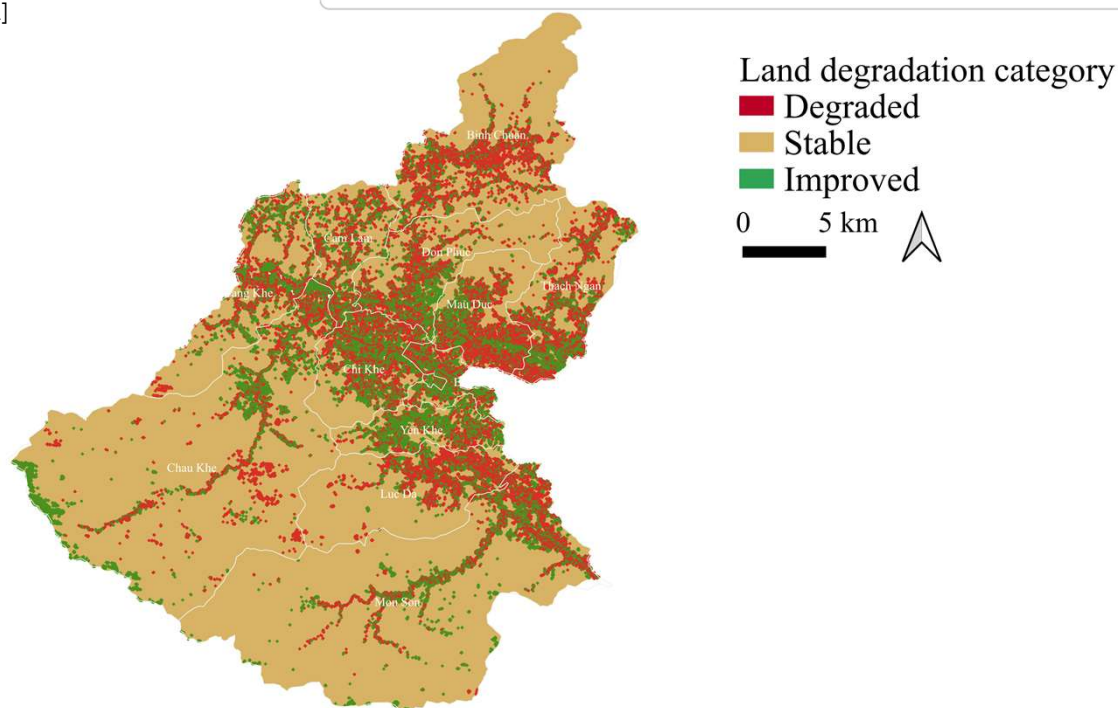


Figure 1: Spatial extent of status of land for the period 2016-2021 (30m x 30m grid) in Con Cuong, Viet Nam<sup>2</sup>

Table 1: Extent of status of land in Con Cuong, Viet Nam

	Townlets	Degraded		Stable		Improved		Total
		ha	%	ha	%	ha	%	
Top four	Binh Chuan	668	3.4	18 565	95.5	207	1.1	19 439
	Thach Ngan	557	5.6	8 993	91.2	309	3.1	9 859
	Mon Son	549	1.3	42 407	97.6	512	1.2	43 468
	Mau Duc	510	6.7	6 824	89.2	313	4.1	7 647
Bottom four	Xuan Tuong	8	4.5	157	84.7	20	10.8	185
	Vo Liet	147	5.4	2 363	86.8	213	7.8	2 723
	Thanh Yen	172	3.1	5 018	90.9	333	6.0	5 523
	Thanh Xuan	242	2.2	10 710	95.7	239	2.1	11 191

### Key Findings

Land degradation category in Con Cuong district:

- Degraded land (ha, %):  
4 813, 2.6,
- Stable land (ha, %):  
176 667, 95.3,
- Improved land (ha, %):  
3 839, 2.1.

Acknowledgement: The assessments were developed with the financial support of the government of Ireland.

Prepared by Shrijwal Adhikari, Amit Ghosh, Fatima Mushtaq, Beau Damen, Matieu Henry in close collaboration with World Agroforestry (ICRAF) and Asian Institute of Technology (AIT) for Monitoring of geospatial indicators for nature-based solutions. Food and Agriculture Organization of United Nations, Rome, Italy.

<sup>1</sup> SEPAL

<sup>2</sup> GADM. The boundaries and names shown, and the designations used on these map(s) do not express any opinion whatsoever on the part of FAO concerning the legal status of any country, territory, city or area or of its authorities, or concerning the delimitation of its frontiers and boundaries. Dashed lines on maps represent approximate border lines for which there may not yet be full agreement.