



Source: United Nations. 2020. Map of the world [online]. [Cited July 2022]

An assessment of degree of urbanization (Degurba) grid cells was done in Thanh Chuong district of Viet Nam for year 2020 to delineate into Degurba classes using Degurba methodology¹. The methodology classifies the population grid cells into urban center, urban cluster and rural grid cells based on population contiguity, total population and built-up area. The assessment was performed using GHS tools².

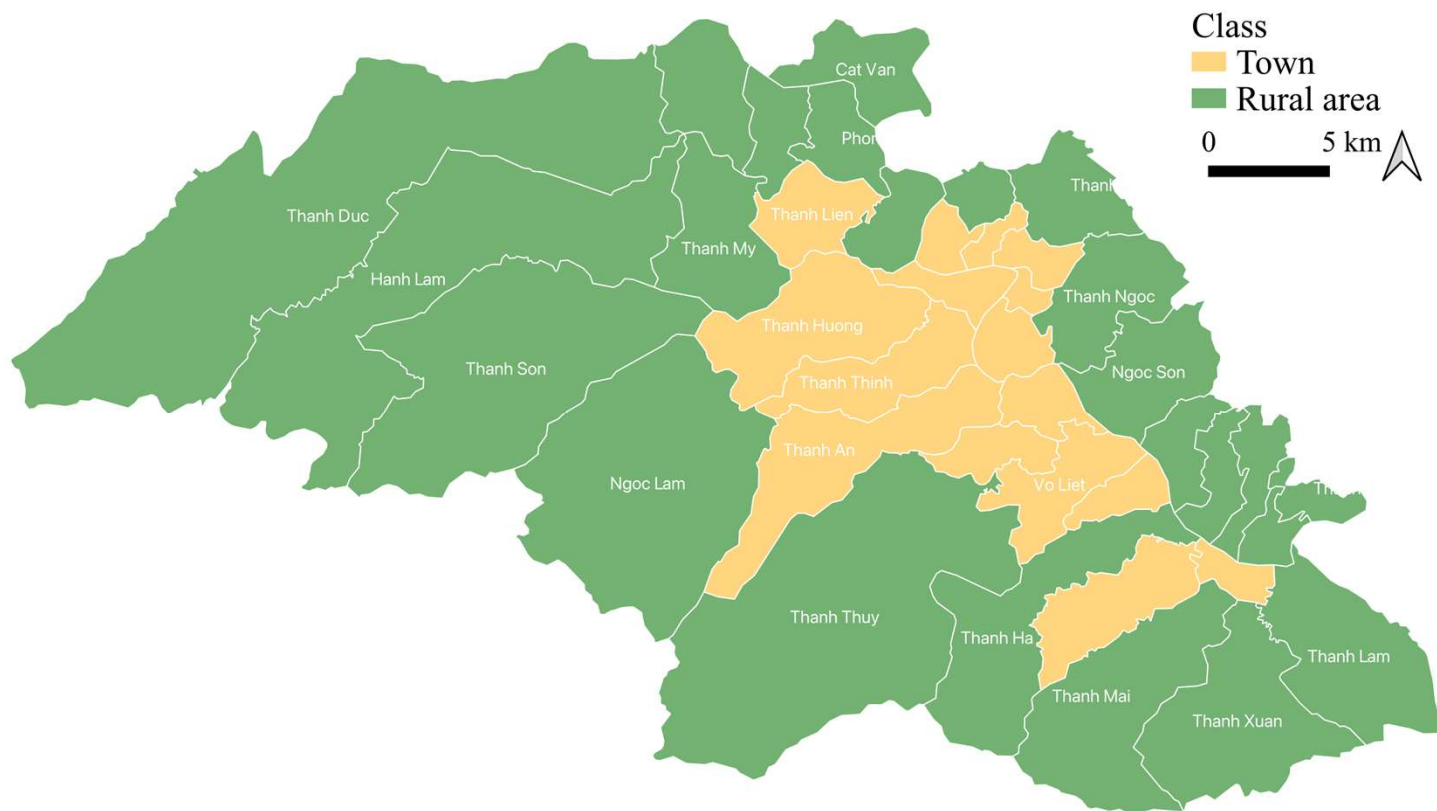


Figure 1: Spatial extent of degree of urbanization classes for 2020 in Thanh Chuong, Viet Nam³

Table 1: Degree of urbanization (Degurba) classes in Thanh Chuong

Class	Grid cell	Inhabitants (nb)	Townlets (nb)
City	Urban center	$\geq 25\ 000$	0
Town	Urban cluster	5 000 – 2 500	16
Rural area	Rural grid	$\leq 2\ 500$	24
Total	na	na	40

Acknowledgement: The assessments were developed with the financial support of the government of Ireland.

Prepared by Shrijwal Adhikari, Amit Ghosh, Fatima Mushtaq, Beau Damen, Matieu Henry in close collaboration with World Agroforestry (ICRAF) and Asian Institute of Technology (AIT) for Monitoring of geospatial indicators for nature-based solutions. Food and Agriculture Organization of United Nations, Rome, Italy.

¹ Eurostat 2021. Applying the degree of urbanisation – A methodological manual to define cities, towns and rural areas for international comparisons.

² GHS tools

³ GADM. The boundaries and names shown, and the designations used on these map(s) do not express any opinion whatsoever on the part of FAO concerning the legal status of any country, territory, city or area or of its authorities, or concerning the delimitation of its frontiers and boundaries. Dashed lines on maps represent approximate border lines for which there may not yet be full agreement.