

Mapping indicators for nature-based solutions cropland in Thanh Chuong, Viet Nam (2021)



Source: United Nations. 2020. Map of the world [online]. [Cited July 2022]

A crop mask was prepared in support to nature-based solutions (NBS) indicator monitoring in Thanh Chuong district of Viet Nam. The crop mask was based on the land cover map prepared using a modified 2019 national land cover legends from the department of agriculture and rural development (DARD). The legend was used for classifying Sentinel 1, 2 and Planet imageries to obtain land cover at 5m spatial resolution.

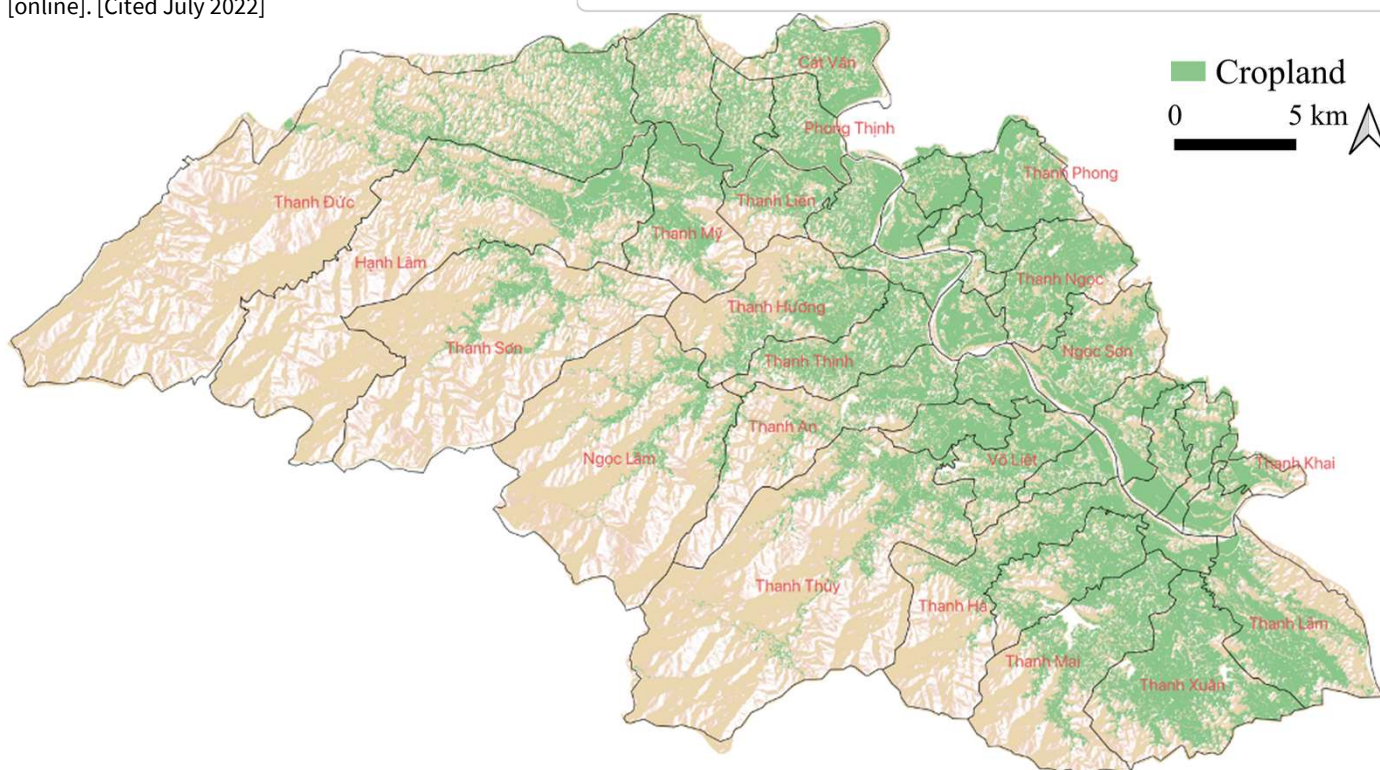


Figure 1: Extent of cropland (in 5m x 5m grid) for 2021 in Thanh Chuong district of Viet Nam¹ (2021)

Table 1: Extent of cropland in Thanh Chuong district

Townlets		Cropland	
		ha	%
Top four	Thanh Xuan	2 502	60.5
	Thanh Duc	2 124	13.0
	Thanh Lam	1 767	49.0
	Thanh Mai	1 591	35.5
Bottom four	Thanh Chuong	87	35.4
	Thanh Tuong	192	61.0
	Thanh Yen	310	59.0
	Thanh Khai	312	52.2

Key Findings

Cropland in Thanh Chuong district:

- Total area (ha, %): 35 107, 31.3
- Range (ha, %): 86-2 502, 8.1-75.8
- Thanh Xuan and Thanh Chuong townlets have highest and lowest cropland area respectively

Acknowledgement: The assessments were developed with the financial support of the government of Ireland.

Prepared by Shrijwal Adhikari, Amit Ghosh, Fatima Mushtaq, Beau Damen, Matieu Henry in close collaboration with World Agroforestry (ICRAF) and Asian Institute of Technology (AIT) for Monitoring of geospatial indicators for nature-based solutions. Food and Agriculture Organization of United Nations, Rome, Italy.

¹ GADM. The boundaries and names shown, and the designations used on these map(s) do not express any opinion whatsoever on the part of FAO concerning the legal status of any country, territory, city or area or of its authorities, or concerning the delimitation of its frontiers and boundaries. Dashed lines on maps represent approximate border lines for which there may not yet be full agreement.