



Source: United Nations. 2020. Map of the world [online]. [Cited July 2022]

A crop mask was prepared in support to nature-based solutions (NBS) indicator monitoring in Con Cuong district of Viet Nam. The crop mask was based on the land cover map prepared using a modified 2019 national land cover legends from the department of agriculture and rural development (DARD). The legend was used for classifying Sentinel 1, 2 and Planet imageries to obtain land cover at 5m spatial resolution.

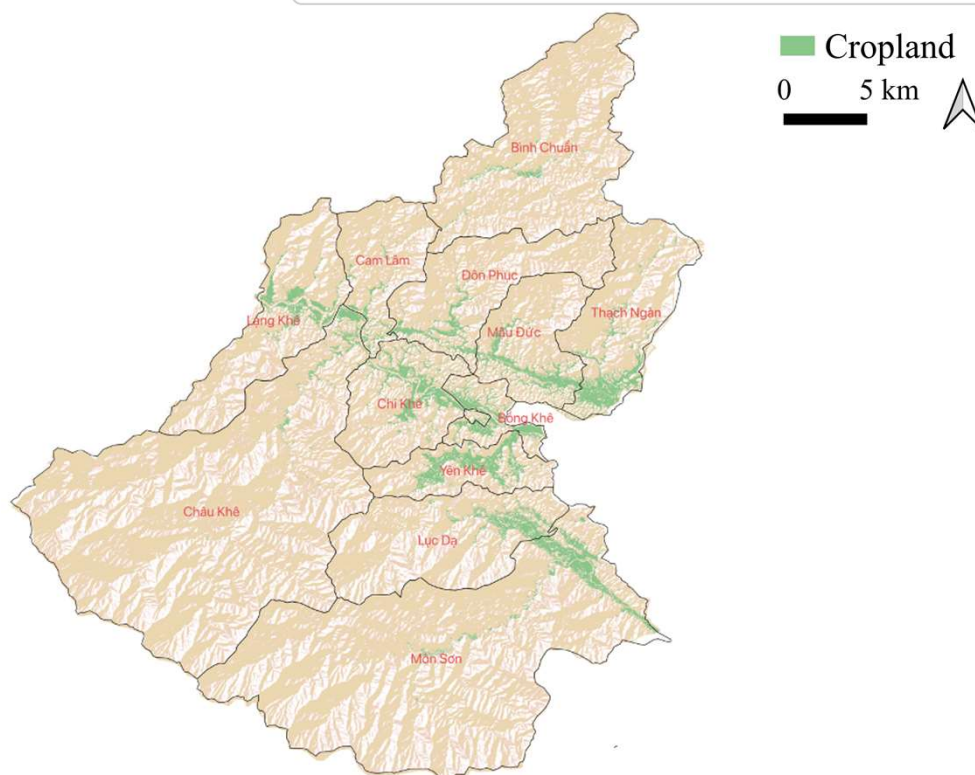


Figure 1: Extent of cropland (in 5m x 5m grid) in Con Cuong district of Viet Nam¹ (2021)

Table 1: Extent of cropland in Con Cuong district

Townlets		Cropland	
		ha	%
Top four	Mon Son	1 182	2.9
	Yen Khe	1 060	20.5
	Thach Ngan	1 020	10.7
	Chi Khe	989	13.1
Bottom four	Con Cuong	40	21.8
	Binh Chuan	229	1.3
	Cam Lam	274	4.5
	Chau Khe	458	1.0

Key Findings

Cropland in Con Cuong district:

- Total area (ha, %): 8 694, 5.0
- Range (ha, %): 40-1 182, 1-25.9
- Mon Son and Con Cuong townlets have highest and lowest cropland area respectively

Acknowledgement: The assessments were developed with the financial support of the government of Ireland.

Prepared by Shrijwal Adhikari, Amit Ghosh, Fatima Mushtaq, Beau Damen, Matieu Henry in close collaboration with World Agroforestry (ICRAF) and Asian Institute of Technology (AIT) for Monitoring of geospatial indicators for nature-based solutions. Food and Agriculture Organization of United Nations, Rome, Italy.

¹GADM. The boundaries and names shown, and the designations used on these map(s) do not express any opinion whatsoever on the part of FAO concerning the legal status of any country, territory, city or area or of its authorities, or concerning the delimitation of its frontiers and boundaries. Dashed lines on maps represent approximate border lines for which there may not yet be full agreement.