



Source: United Nations. 2020. Map of the world [online]. [Cited July 2022]

Cropland exposed to flooding frequency (low, medium and high) was calculated in Con Cuong district of Viet Nam to assess the potential impact of flood on cropland and agriculture production for the period 2017-2021. Flooding frequency was calculated using a change detection approach for the period 2017-2021 on Sentinel-1 (SAR) data and overlaid with crop mask (2021). The results were obtained at 10m spatial resolution.

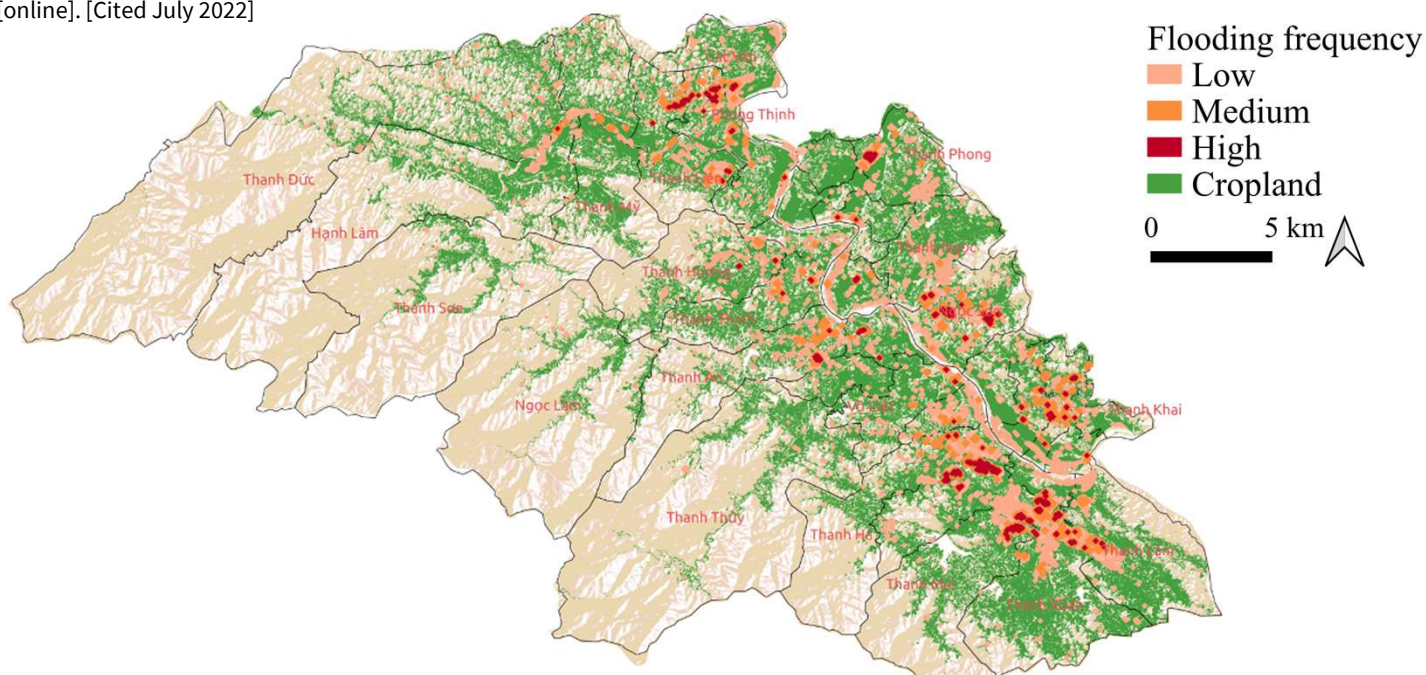


Figure 1: Spatial extent of cropland (in 10m x 10m) exposed to flooding frequency (low, medium and high) for the period 2017-2021 in Thanh Chuong district of Viet Nam¹

Table 1: Extent of cropland exposed to flooding frequency (low, medium and high) in Thanh Chuong district

	Townlets	Flooded Cropland (ha)			Total (ha)	Percent
		Low	Medium	High		
Top four	Thanh Xuan	211.6	19.7	2.4	233.6	9.3
	Thanh Mai	145.0	12.3	6.5	163.8	10.3
	Ngoc Son	143.7	11.2	6.6	161.5	14.0
	Thanh Lam	142.9	9.2	0.3	152.4	8.6
Bottom four	Ngoc Lam	1.4	0.0	0.0	1.4	0.2
	Thanh Son	1.6	0.0	0.0	1.6	0.2
	Thanh Chuong	1.9	0.0	0.0	1.9	2.3
	Thanh Thuy	4.1	0.0	0.0	4.1	0.3

Key Findings

- During the period 2017-2021, the total flooded cropland area is 2 059ha which represents 5.9% of total cropland area.
- Most affected townlets by flooded cropland are Thanh Xuan, Thanh Mai, Ngoc Son, Thanh Lam.

Acknowledgement: The assessments were developed with the financial support of the government of Ireland. Prepared by Shrijwal Adhikari, Amit Ghosh, Fatima Mushtaq, Beau Damen, Matieu Henry in close collaboration with World Agroforestry (ICRAF) and Asian Institute of Technology (AIT) for Monitoring of geospatial indicators for nature-based solutions. Food and Agriculture Organization of United Nations, Rome, Italy.

¹ GADM. The boundaries and names shown, and the designations used on these map(s) do not express any opinion whatsoever on the part of FAO concerning the legal status of any country, territory, city or area or of its authorities, or concerning the delimitation of its frontiers and boundaries. Dashed lines on maps represent approximate border lines for which there may not yet be full agreement.