



Source: United Nations. 2020. Map of the world [online]. [Cited July 2022]

Forest fragmentation was calculated in Thanh Chuong district of Viet Nam for 2021. The calculation was performed using *GWB Analysis (Frag)* app of *SEPAL*¹ platform. Average-per-patch (APP) of forest area density (FAD) was calculated through an average of square neighborhood areas of length 7, 13, 27, 81, 243 pixels following the fragmentation methodology² by JRC. The results were obtained at 5m spatial resolution.

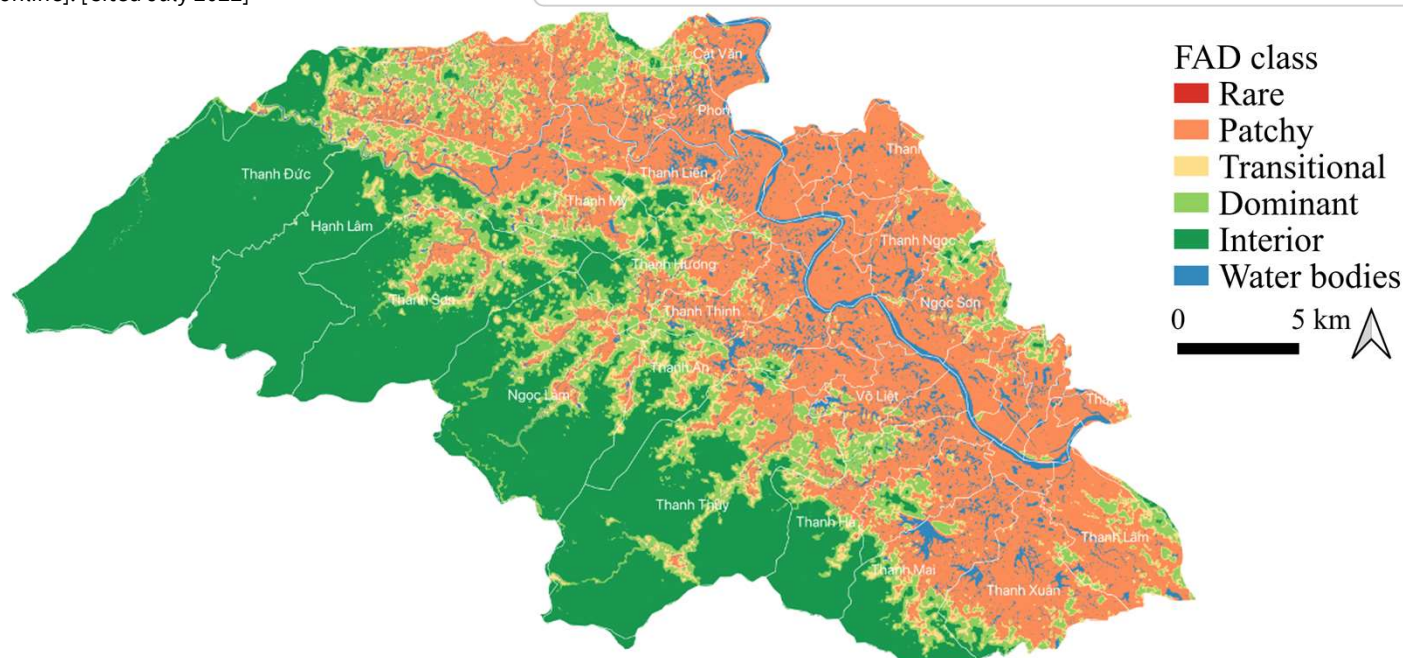


Figure 1: Spatial extent of average-per-patch (APP) class of forest area density (FAD) (in 5m x 5m grid) for 2021 in Thanh Chuong district of Viet Nam¹

Table 1: Extent of average-per-patch (APP) class of forest area density (FAD) (ha)

	Townlets	Rare	Patchy	Transitional	Dominant	Interior	Total land area
Top four	Thanh Duc	0.49	2 366	1 267	1 461	10 636	16 347
	Thanh Thuy	0.36	1 420	895	1 687	7 620	11 836
	Hanh Lam	0.48	1 472	700	1 187	6 205	9 892
	Ngoc Lam	0.02	568	621	1 641	5 706	8 756
Bottom four	Thanh Chuong	0.13	213	0	0	0	244
	Thanh Tuong	0.00	273	0	0	0	314
	Thanh Giang	0.09	415	0	0	0	519
	Thanh Yen	0.06	410	15	12	0	525

Acknowledgement: The assessments were developed with the financial support of the government of Ireland.

Prepared by Shrijwal Adhikari, Amit Ghosh, Fatima Mushtaq, Beau Damen, Matieu Henry in close collaboration with World Agroforestry (ICRAF) and Asian Institute of Technology (AIT) for Monitoring of geospatial indicators for nature-based solutions. Food and Agriculture Organization of United Nations, Rome, Italy.

¹ [SEPAL](#)

² [Forest Fragmentation](#)

³ [GADM](#). The boundaries and names shown, and the designations used on these map(s) do not express any opinion whatsoever on the part of FAO concerning the legal status of any country, territory, city or area or of its authorities, or concerning the delimitation of its frontiers and boundaries. Dashed lines on maps represent approximate border lines for which there may not yet be full agreement.