



Source: United Nations. 2020. Map of the world [online]. [Cited July 2022]

Forest fragmentation was calculated in Con Cuong district of Viet Nam for 2021. Calculation was performed using GWB Analysis (Frag) app of SEPAL¹ platform. Average-Per-Patch (APP) of forest area density (FAD) was calculated through an average of square neighborhood areas of length 7, 13, 27, 81, 243 pixels following the Fragmentation methodology² by JRC. The results were obtained at 5 m spatial resolution.

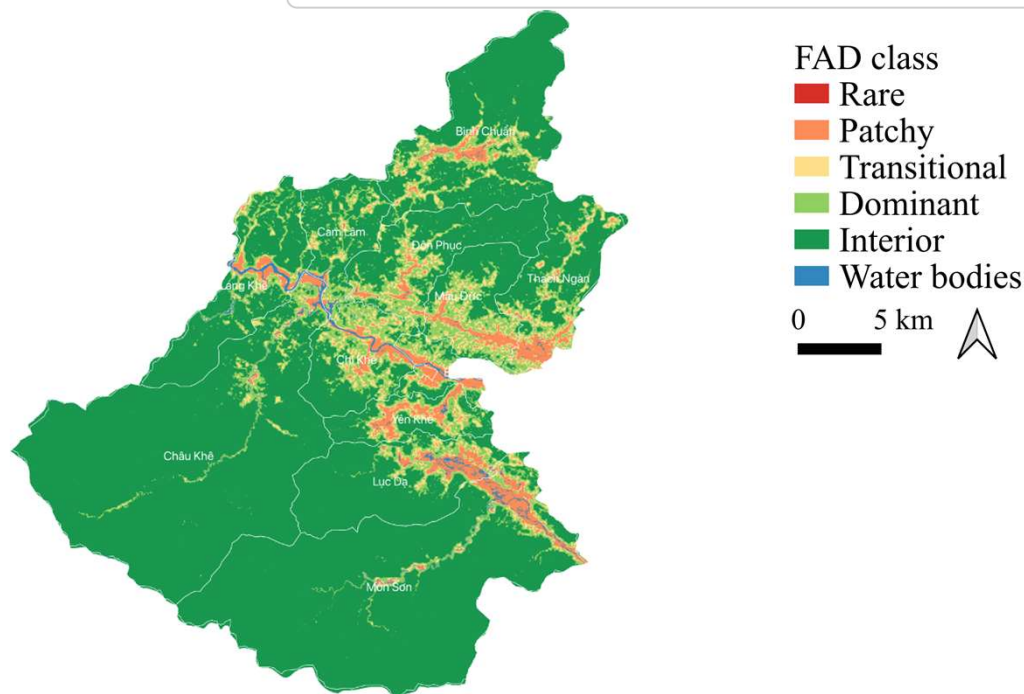


Figure 1: Spatial extent of average-per-patch (APP) class of forest area density (FAD) (in 5m x 5m grid) for 2021 in Con Cuong district of Viet Nam¹

Table 1: Extent of average-per-patch (APP) class of forest area density (FAD) (ha)

Townlets	Rare	Patchy	Transitional	Dominant	Interior	Total land area (ha)	
Top four	Chau Khe	0.04	282	455	1 841	40 908	44 012
	Mon Son	0.06	1 185	676	1 765	36 405	40 887
	Binh Chuan	0.00	579	991	2 322	14 107	18 223
	Luc Da	0.09	924	619	1 320	9 155	12 322
Bottom four	Con Cuong	0.13	116	15	36	6	183
	Bong Khe	0.04	545	316	788	842	2 709
	Yen Khe	0.05	783	645	1 098	2 553	5 178
	Cam Lam	0.00	97	422	1 396	4 006	6 065

Acknowledgement: The assessments were developed with the financial support of the government of Ireland.

Prepared by Shrijwal Adhikari, Amit Ghosh, Fatima Mushtaq, Beau Damen, Matieu Henry in close collaboration with World Agroforestry (ICRAF) and Asian Institute of Technology (AIT) for Monitoring of geospatial indicators for nature-based solutions. Food and Agriculture Organization of United Nations, Rome, Italy.

¹ SEPAL

² Forest Fragmentation

³ GADM. The boundaries and names shown, and the designations used on these map(s) do not express any opinion whatsoever on the part of FAO concerning the legal status of any country, territory, city or area or of its authorities, or concerning the delimitation of its frontiers and boundaries. Dashed lines on maps represent approximate border lines for which there may not yet be full agreement.