

Mapping indicators for nature-based solutions soil moisture in Con Cuong, Viet Nam (2021)



Source: United Nations. 2020. Map of the world [online]. [Cited July 2022]

Soil moisture is obtained from Sentinel 1 to assess the proxy for water availability in soil; which can also be used to calculate crop yield, crop productivity, water stress and drought in a region. The assessment was made in soil moisture mapping module in SEPAL¹ for 2021 at spatial resolution of 100 meters in Con Cuong district of Viet Nam and aggregated into townlets for comparative assessments.

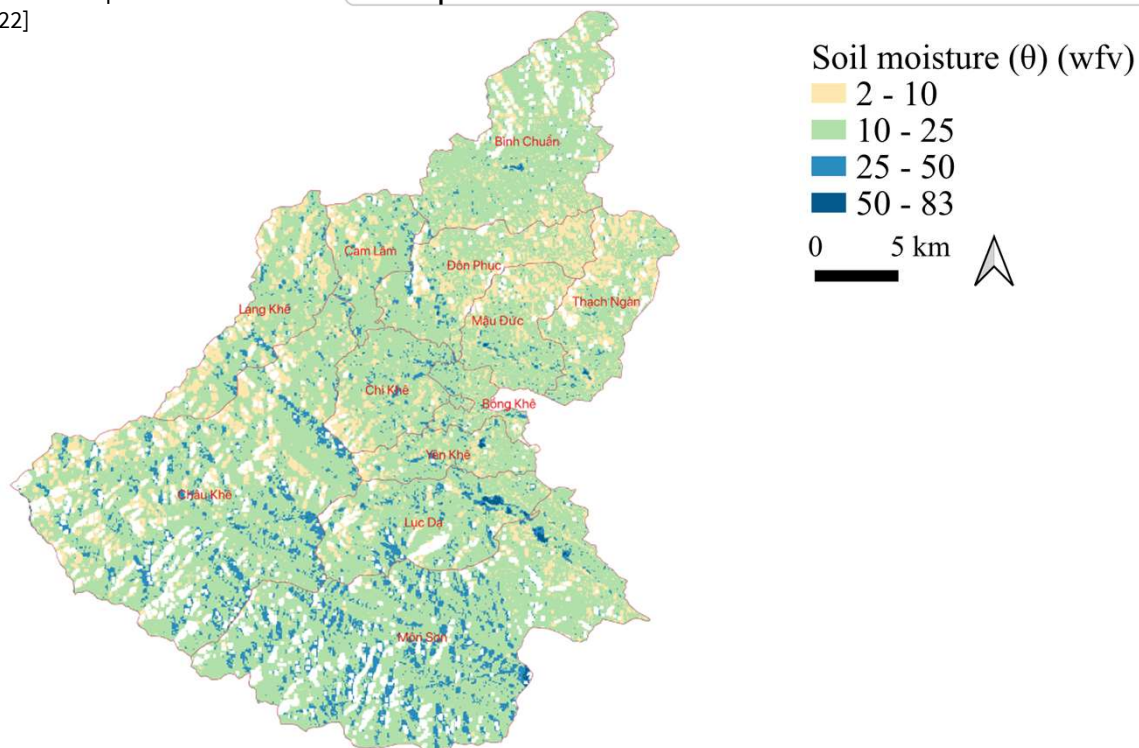


Figure 1: Spatial extent of average annual soil moisture in Con Cuong district for in Viet Nam²

Table 1: Average annual soil moisture for 2021 in Con Cuong

| | Townlets | Range (wfv) | | Average (wfv) |
|-------------|------------|-------------|------|---------------|
| | | Min. | Max. | |
| Top four | Mon Son | 5 | 83 | 18.9 |
| | Luc Da | 5 | 67 | 18.0 |
| | Chau Khe | 3 | 78 | 17.1 |
| | Con Cuong | 6 | 50 | 16.2 |
| Bottom four | Thach Ngan | 4 | 55 | 13.3 |
| | Don Phuc | 4 | 54 | 13.6 |
| | Mau Duc | 5 | 53 | 13.9 |
| | Binh Chuan | 2 | 60 | 14.1 |

Key Findings

- Average annual soil moisture in Con Cuong district ranges from 2-83 wfv with an average of 15.7 wfv at Townlet level.
- Townlets with higher soil moisture by annual average are Mon Son, Luc Da, Chau Khe, Con Cuong.

Acknowledgement: The assessments were developed with the financial support of the government of Ireland.

Prepared by Shrijwal Adhikari, Amit Ghosh, Fatima Mushtaq, Beau Damen, Matieu Henry in close collaboration with World Agroforestry (ICRAF) and Asian Institute of Technology (AIT) for Monitoring of geospatial indicators for nature-based solutions. Food and Agriculture Organization of United Nations, Rome, Italy.

¹ Soil moisture mapping

² GADM. The boundaries and names shown, and the designations used on these map(s) do not express any opinion whatsoever on the part of FAO concerning the legal status of any country, territory, city or area or of its authorities, or concerning the delimitation of its frontiers and boundaries. Dashed lines on maps represent approximate border lines for which there may not yet be full agreement.