

# Mapping indicators for nature-based solutions rice fields in Thanh Chuong, Viet Nam (2021)



Rice is one of the major crops grown in Viet Nam. The extent of rice field was obtained by training a machine learning model to classify the satellite imageries (Planet, Sentinel 1 and Sentinel 2) for 2021. The results were obtained at 5-meter spatial resolution and aggregated into townlets for comparative assessments.

Source: United Nations. 2020. Map of the world [online]. [Cited July 2022]

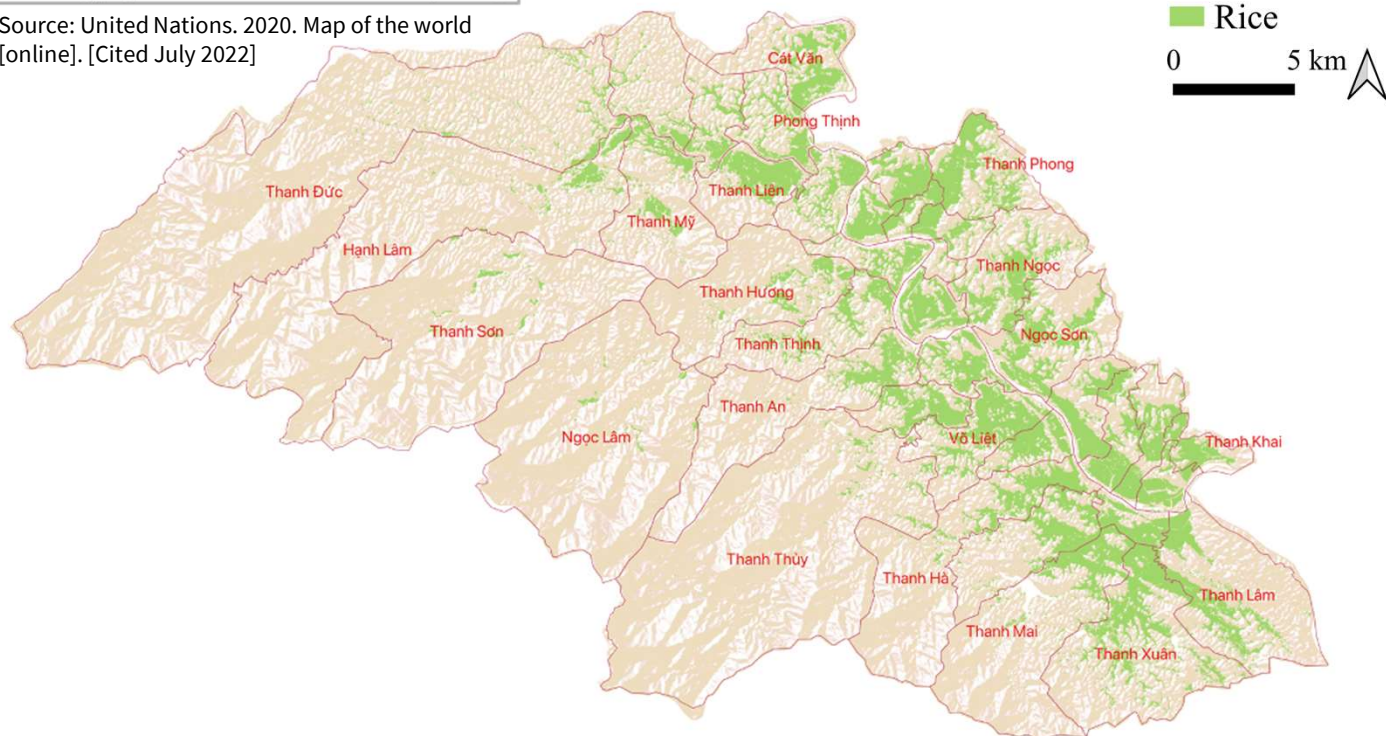


Figure 1: Spatial extent of rice field for 2021 in Thanh Chuong, Viet Nam<sup>1</sup>

Table 1: Extent of rice field

	Townlets	ha	%
Top four	Thanh Giang	314	60.3
	Thanh Tuong	183	58.0
	Thanh Hung	342	56.6
	Thanh Van	290	53.3
Bottom four	Ngoc Lam	64	0.7
	Thanh Son	107	1.3
	Thanh Thuy	172	1.5
	Thanh Duc	300	1.8

### Key Findings

Rice field in Thanh Chuong district:

- Total area (ha, %): 15 950, 14.2
- Range (ha, %): 29-1 070, 0.7-60.3
- Townlets with high rice field area (by percent) are Thanh Giang, Thanh Tuong, Thanh Hung and Thanh Van.
- Townlets with low rice field area (by percent) are Ngoc Lam, Thanh Son, Thanh Thuy and Thanh Duc.

Acknowledgement: The assessments were developed with the financial support of the government of Ireland.

Prepared by Shrijwal Adhikari, Amit Ghosh, Fatima Mushtaq, Beau Damen, Matieu Henry in close collaboration with World Agroforestry (ICRAF) and Asian Institute of Technology (AIT) for Monitoring of geospatial indicators for nature-based solutions. Food and Agriculture Organization of United Nations, Rome, Italy.

<sup>1</sup> GADM. The boundaries and names shown, and the designations used on these map(s) do not express any opinion whatsoever on the part of FAO concerning the legal status of any country, territory, city or area or of its authorities, or concerning the delimitation of its frontiers and boundaries. Dashed lines on maps represent approximate border lines for which there may not yet be full agreement.