



Source: United Nations. 2020. Map of the world [online]. [Cited July 2022]

The rice-fish culture was identified as one of the nature-based solutions interventions in Con, Vietnam. The suitability area for rice-fish culture is obtained by overlaying the wet rice field and slope. The results were obtained at a 5-meter spatial resolution and aggregated into townlets for comparative assessments.

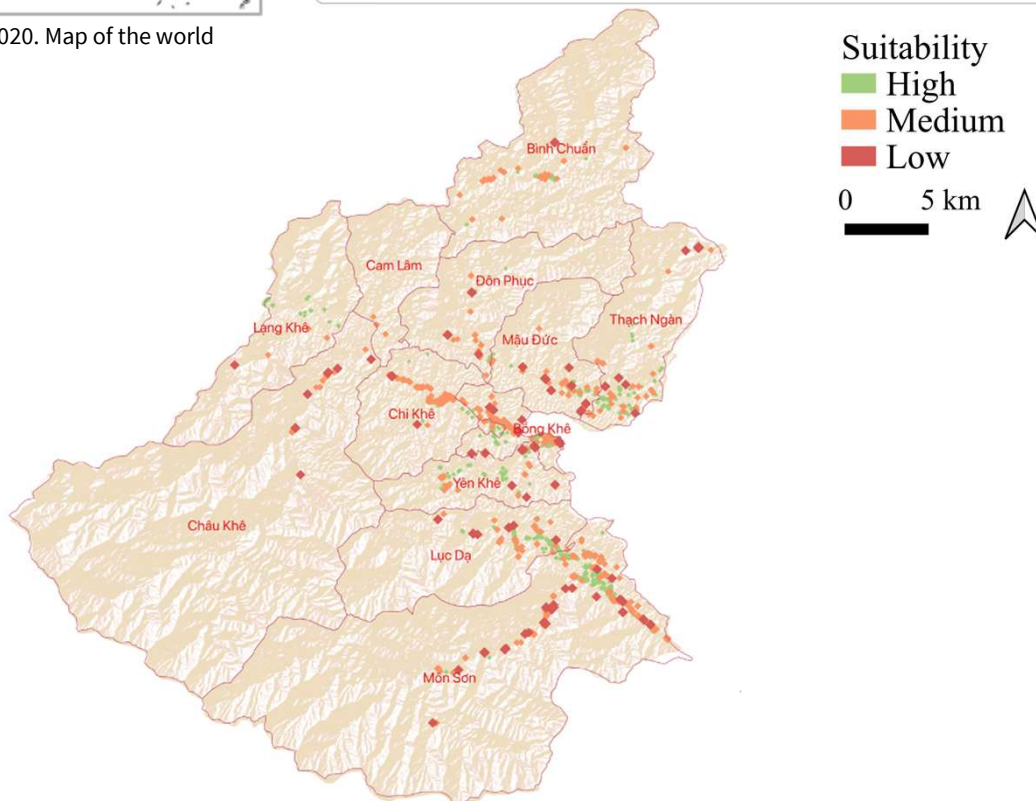


Figure 1: Spatial extent of average annual soil moisture in Con Cuong district for in Viet Nam¹

Table 1: Extent of rice-fish culture suitability areas (in ha)

Townlets	High	Medium	Low	Total
Top four				
Mon Son	61.3	10.2	1.6	73.2
Bong Khe	41.6	7.5	0.3	49.4
Chi Khe	28.3	9.0	0.1	37.4
Luc Da	16.2	2.8	0.2	19.2
Bottom four				
Cam Lam	0.0	0.0	0.0	0.0
Con Cuong	1.1	0.3	0.0	1.4
Lang Khe	1.4	0.0	0.0	1.4
Don Phuc	1.0	0.6	0.1	1.8

Key Findings

- A total of 236 ha of area is available for rice-fish culture, which is 6% of total rice grown in Con Cuong.
- Townlets with higher available areas for rice-fish culture are Mon Son, Bong Khe, Chi Khe and Luc Da.

Acknowledgement: The assessments were developed with the financial support of the government of Ireland.

Prepared by Shrijwal Adhikari, Amit Ghosh, Fatima Mushtaq, Beau Damen, Matieu Henry in close collaboration with World Agroforestry (ICRAF) and Asian Institute of Technology (AIT) for Monitoring of geospatial indicators for nature-based solutions. Food and Agriculture Organization of United Nations, Rome, Italy.

¹GADM. The boundaries and names shown, and the designations used on these map(s) do not express any opinion whatsoever on the part of FAO concerning the legal status of any country, territory, city or area or of its authorities, or concerning the delimitation of its frontiers and boundaries. Dashed lines on maps represent approximate border lines for which there may not yet be full agreement.