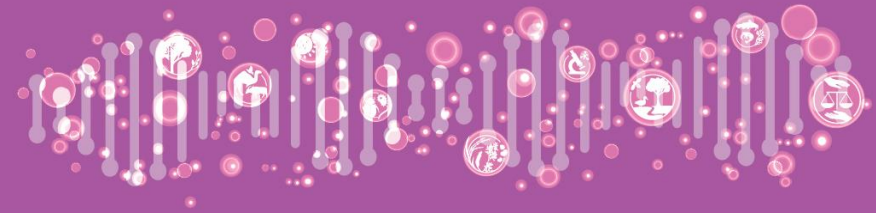




Recognising Indigenous interests in DSI & Genetic Resources

Maui Hudson (Whakatohea)
Director, Te Kotahi Research Institute
Co-Director, Local Contexts



Co-Directors



Jane Anderson
New York University



Kim Christen
*Washington State
University*

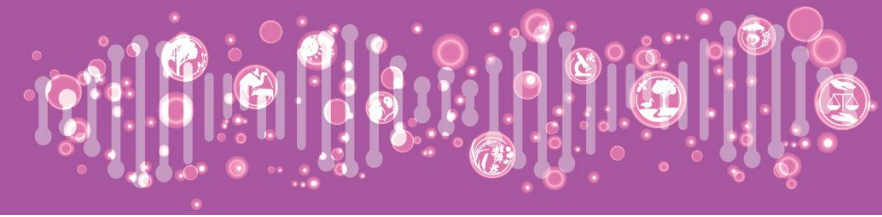


Māui Hudson
*Whakatōhea Nation,
University of Waikato*



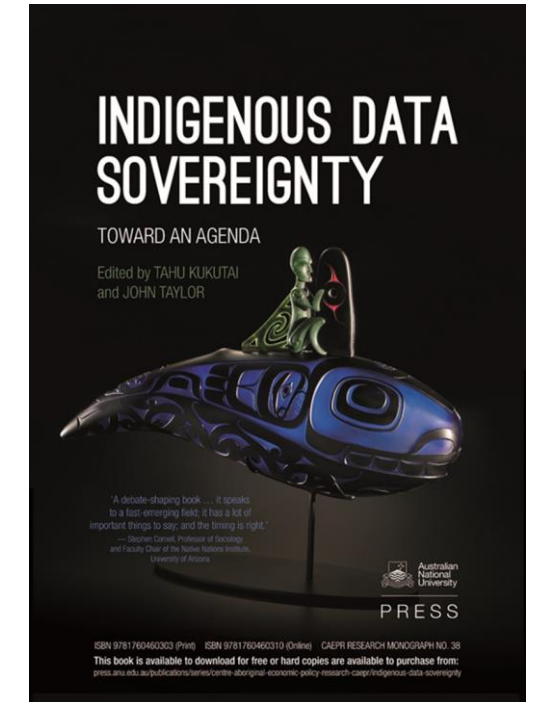
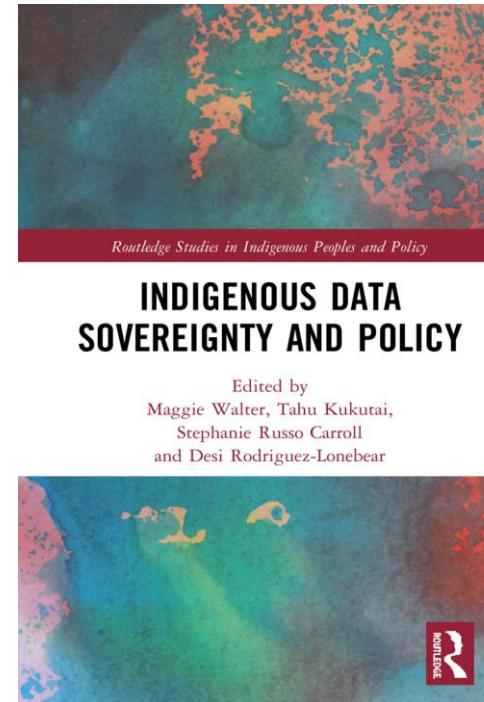
**James Eric Francis,
Sr.**
*Penobscot Nation,
Tribal Historian*



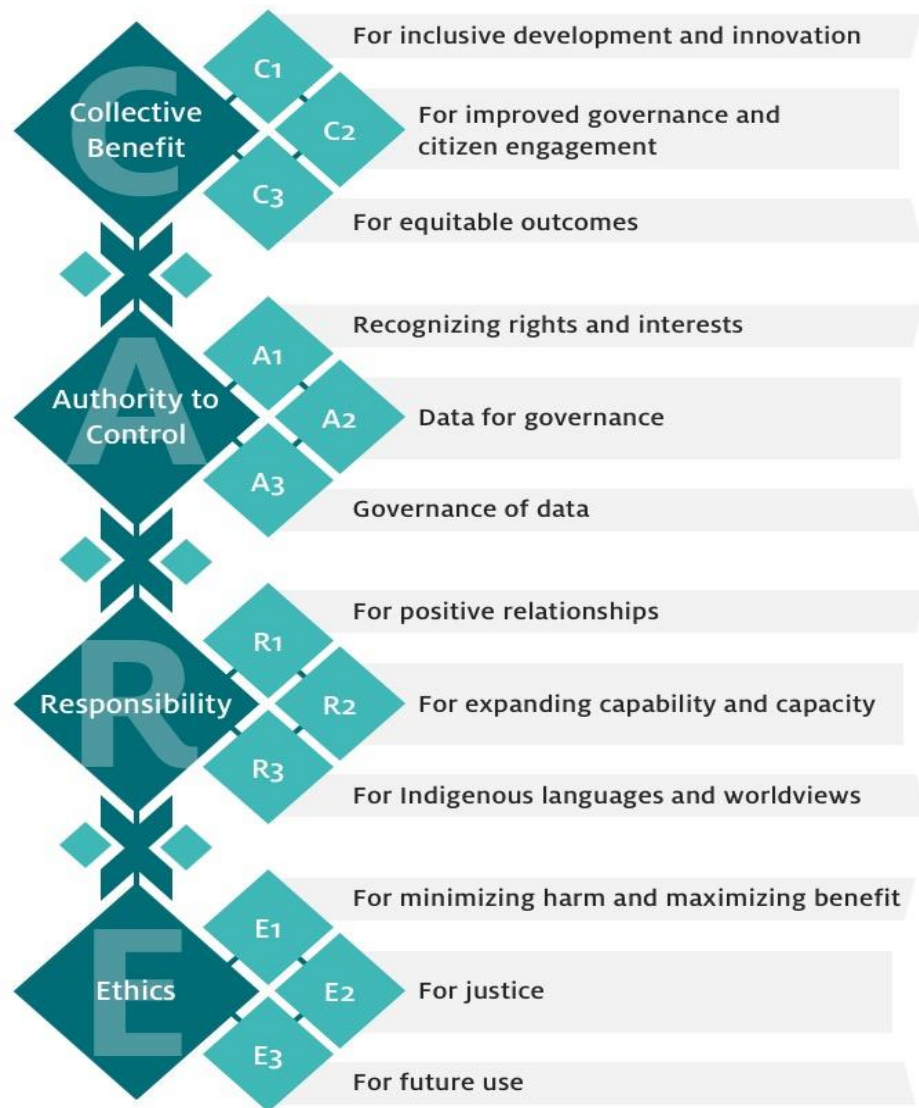
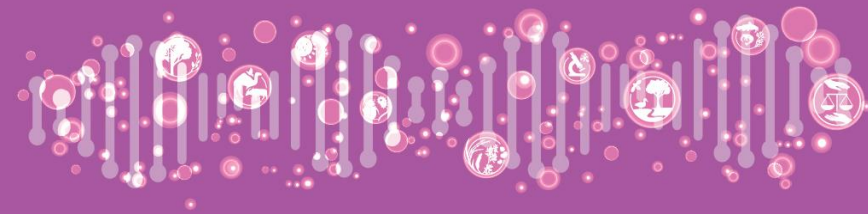


Indigenous Data Sovereignty

- **Indigenous Data Sovereignty is a discourse about rights and interests**
 - Indigenous / Treaty rights
 - Cultural Intellectual Property rights
 - Indigenous research ethics, data ethics
- 1. **Data for Governance:** Gaining access to use data to transform the lives of Indigenous people.
- 2. **Governance of Data:** Managing access to data to ensure use is relevant and responsive.



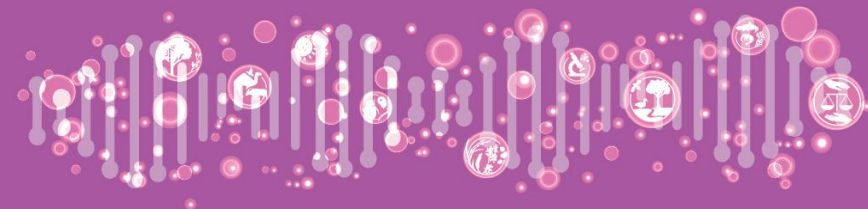
“You can’t govern Indigenous data if you can’t find Indigenous data”



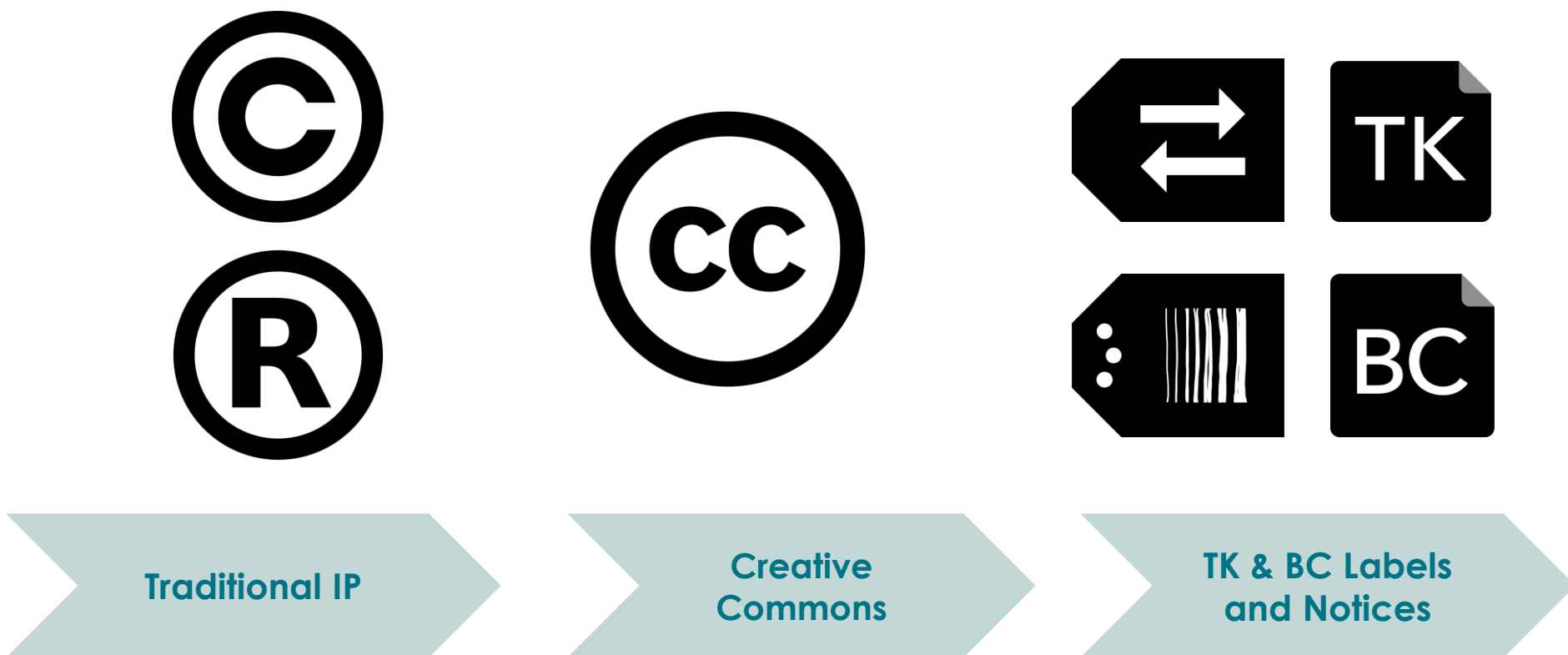
CARE Principles for Indigenous Data Governance



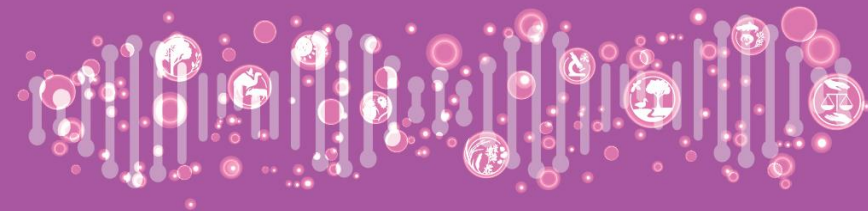
Data Sovereignty Interest Group. (September 2019). "CARE Principles for Indigenous Data Governance." The Global Indigenous Data Alliance. [GIDA-global.org](https://gida-global.org)



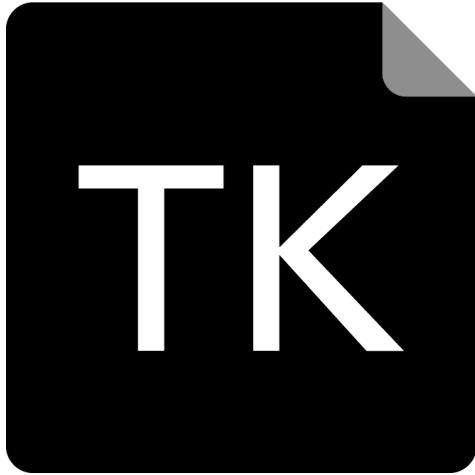
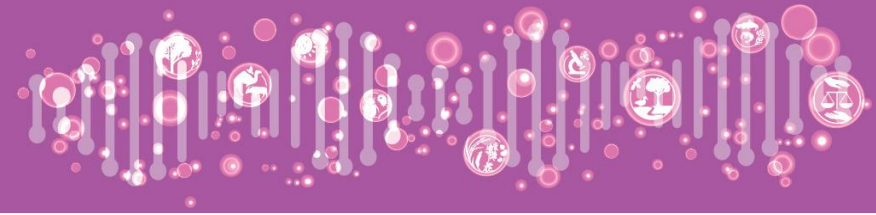
From IP to Licences to Labels



From **ownership** to **control** to **establishing Indigenous cultural authority**



Institutions and Data Repositories have a Responsibility to Disclose Indigenous Collections



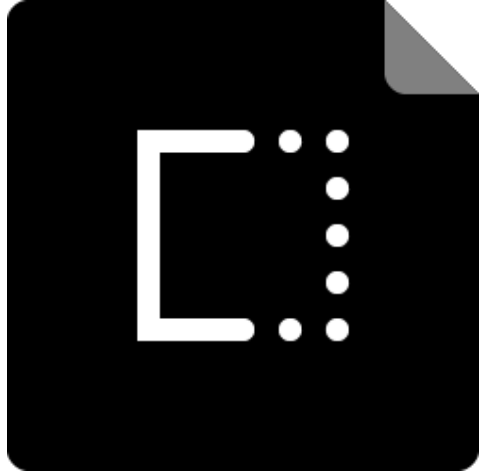
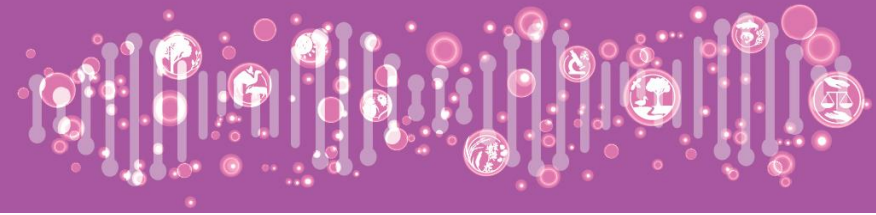
TK Notice

The TK Notice is a visible notification that there are accompanying cultural rights and responsibilities that need further attention for any future sharing and use of this material. The TK Notice may indicate that TK Labels are in development and their implementation is being negotiated. For more information about the TK Notice click [here](#).



BC Notice

The BC (Biocultural) Notice is a visible notification that there are accompanying cultural rights and responsibilities that need further attention for any future sharing and use of this material or data. The BC Notice recognizes the rights of Indigenous peoples to permission the use of information, collections, data and digital sequence information (DSI) generated from the biodiversity or genetic resources associated with traditional lands, waters, and territories. The BC Notice may indicate that BC Labels are in development and their implementation is being negotiated. For more information about the BC Notice click [here](#).



Attribution Incomplete

Collections and items in our institution have incomplete, inaccurate, and/or missing attribution. We are using this notice to clearly identify this material so that it can be updated, or corrected by communities of origin. Our institution is committed to collaboration and partnerships to address this problem of incorrect or missing attribution.



Open to Collaborate

Our institution is committed to the development of new modes of collaboration, engagement, and partnership with Indigenous peoples for the care and stewardship of past and future heritage collections.

Open to Collaborate Notices

Open to Collaborate

CNAIR is committed to the development of new modes of collaboration, engagement, and partnership with Indigenous peoples for the care and stewardship of past and future heritage collections.

(What is this notice? Read more [here.](#))



Center for Native American and Indigenous Research

The Center for Native American and Indigenous Research (CNAIR) promotes innovative uses of the Library's collections that benefit Indigenous communities and scholarship.

The Center for Native American and Indigenous Research (CNAIR) at the APS Library & Museum works with Indigenous communities throughout the Americas and with campus- and community-based scholars in many disciplines and traditions. Its goal is to assist people in finding and utilizing the extensive archival collections at the Library and Museum of the APS in innovative ways that honor Indigenous knowledge, cultivate scholarship, and strengthen languages and cultural traditions.

We express our thanks for the past and ongoing generosity of numerous Indigenous communities and individuals who have offered the guidance and collaborations that have made this work possible.

Related


[CNAIR Mission Statement](#) →

Open to Collaborate

CNAIR is committed to the development of new modes of collaboration, engagement, and partnership with Indigenous peoples for the care and stewardship of past and future heritage collections.

(What is this notice? Read more [here.](#))




GETTING STARTEDQUERYWORKBENCH

Genomic Observatories MetaDatabase (GEOME)


The Genomic Observatories Meta-Database (GEOME) is a web-based database that captures the who, what, where, and when of biological samples and associated genetic sequences. GEOME helps users with the following goals:

- Ensure the metadata from your biological samples is findable, accessible, interoperable, and reusable
- Improve the quality of your data and comply with global data standards
- Integrate with [R](#), ease publication to NCBI's sequence read archive, and work with an associated [LIMS](#)




Getting Started

Getting started and additional information about GEOME



Query


Search and download sequence files and associated metadata



Workbench

View and manage project specific data

"The Genomic Observatories Metadatabase (GEOME): A new repository for field and sampling event metadata associated with genetic samples", John Deck , Michelle R. Gaither, Rodney Ewing, Christopher E. Bird, Neil Davies, Christopher Meyer, Cynthia Riginos, Robert J. Toonen, Eric D. Crandall Published: August 3, 2017 <https://doi.org/10.1371/journal.pbio.2002925>



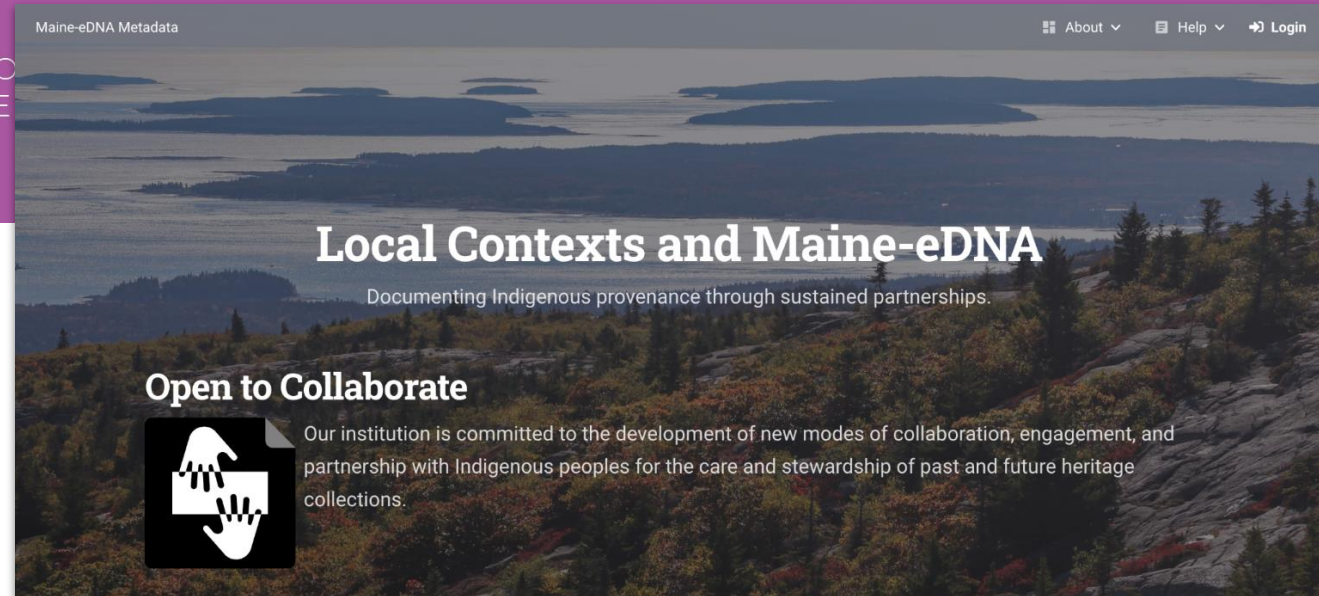
Open to Collaborate

GEOME is committed to the development of new modes of collaboration, engagement, and partnership with Indigenous peoples for the care and stewardship of past and future heritage collections. See [Local Contexts](#) for more information

CLOSE



Biocultural Notices



Local Contexts Projects within Maine-eDNA

Index Sites (T3) Local Contexts' Project Detail (Notices and Labels)

Affiliated Institution: Maine Center For Genetics In The Environment

<https://localcontextshub.org/projects/6d34be51-0f60-4fc5-a699-bed4091c02e0/>

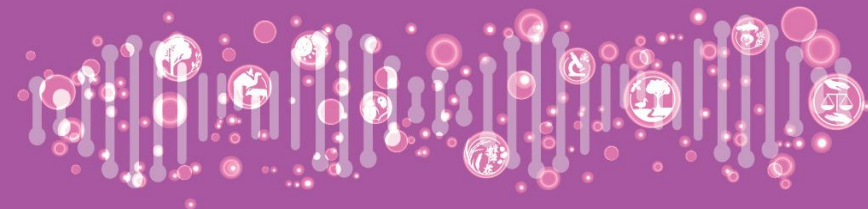


The BC (Biocultural) Notice is a visible notification that there are accompanying cultural rights and responsibilities that need further attention for any future sharing and use of this material or data. The BC Notice recognizes the rights of Indigenous peoples to permission the use of information, collections, data and digital sequence information (DSI) generated from the biodiversity or genetic resources associated with traditional lands, waters, and territories. The BC Notice may indicate that BC Labels are in development and their implementation is being negotiated.

Notice Type	Biocultural (BC) Notice
Created	6/3/2022, 10:31:52 AM
Updated	7/19/2022, 5:37:44 PM

Index Sites (T3) Goals

Integrate program wide sampling from a set of interconnected coastal habitats into an eDNA Big Data resource (3.1.1). Conduct comprehensive comparative studies of spatiotemporal dynamics across the set of interconnected coastal habitats (3.1.2).



Vaccinium myrtillus isolate NK2018 v1.0 genome sequence

Genome Overview

Properties

Downloads

JBrowse

BLAST

PathwayCyc

Synteny Viewer

Genome Overview

Analysis Name	Vaccinium myrtillus isolate NK2018 v1.0 genome sequence
Method	Illumina, Oxford Nanopore (Assembly with Shasta v0.2.0)
Source	New Zealand Institute for Plant and Food Research Limited
Date performed	2021-03-10



BC Notice

The BC (Biocultural) Notice is a visible notification that there are accompanying cultural rights and responsibilities that need further attention for any future sharing and use of this material or data. The BC Notice recognizes the rights of Indigenous peoples to permission the use of information, collections, data and digital sequence information (DSI) generated from the biodiversity or genetic resources associated with traditional lands, waters, and territories. The BC Notice may indicate that BC Labels are in development and their implementation is being negotiated. *For more information about the BC Notice click [here](#).*

NCBI Assembly Accession: [GCA_016920895.1](#)

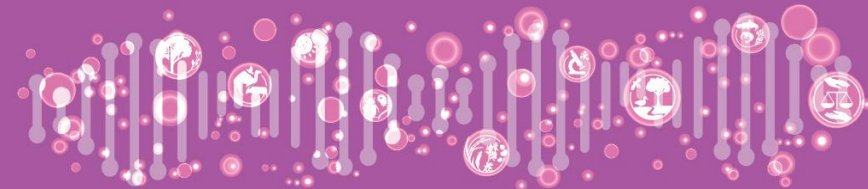
NCBI Bioproject Accession: [PRJNA672146](#)

Citation: Wu,C., Deng,C., Hilario,E., Albert,N., Lafferty,D., Plunkett,B., Elborough,C., Saei,A., Jaakola,L., Karppinen,K., Grande,A., Kylli,R., Allan,A., Espley,R. and Chagne,D. 2021. [A chromosome-scale assembly of the bilberry genome identifies a complex locus controlling berry anthocyanin composition](#). Molecular Ecology Resources, DOI 10.1111/1755-0998.13467

The assembly and annotation files loaded into GDV were provided by the authors and match the data submitted to NCBI.

Genome Assembly Summary:

Total size	524,292,997
Number of scaffolds	1,418
Scaffold N50	37,643,989
BUSCO score (assembly)	97.6%
BUSCO score (annotation)	95.1%



Systematics Collections Data

[Home](#)[About](#)[Search](#)[My SCD](#)[Log in](#) | [Sign up](#)

All

[Search help](#)

Results



Showing 1 to 500 of 668933 records

Sort by

1 2 3 4 5 ... 1338 [Next page >](#)

☐ Select all

☐ [PDD 106137 : Chrysomycena sp. 'Hay Reserve \(PDD 96442\)'](#)

Data provider: PDD Collection: Cooper Specimen type: Packet Country: New Zealand Standard locality: Rangiwhia Hut Track
NZ area code: Rangitikei

☐ [CHR 241074 : Musci](#)

Data provider: CHR Collection: Herbarium Specimen type: Packet Country: New Zealand Standard locality: Mount Cook National
Park, above Caroline Glacier, under Pibrac

☐ [CHR 518109 :](#)

Data provider: CHR Collection: Herbarium Specimen type: Sheet Country: New Zealand Standard locality: Green Lake, Raoul
Island, Kermadec Islands

☐ Phylum/Division

☐ Class

☐ Order

☐ Family

☐ Genus

☐ Country

☐ Native lands

[Ngāi Tahu \(192343\)](#)

[Ngāti Toa Rangatira \(115950\)](#)

[Ngāti Rārua \(72743\)](#)

[Te Atiawa o Te Waka-a-Māui \(55471\)](#)

[Ngāti Apa ki te Rā Tō \(55457\)](#)

[More...](#)

CHR 516516 – *Wilsoniella blindioides* (Broth.) Sainsbury



Data provider: Allan Herbarium

Barcode: CHR 516516

Type status: Isotype

Specimen type: Sheet

Database record added: 24 June 1998

Database record updated: 18 June 2022

Permissions

Project permits

Project title:

[Local Contexts - Allan Herbarium \(CHR\)](#)

Reference:

CHR Collection - Local Contexts



Biocultural (BC) Notice

Biocultural (BC) Notice

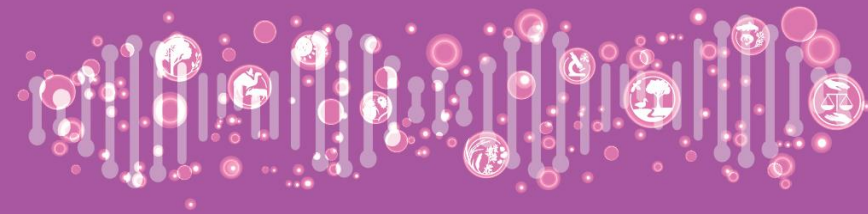


Biocultural (BC) Notice

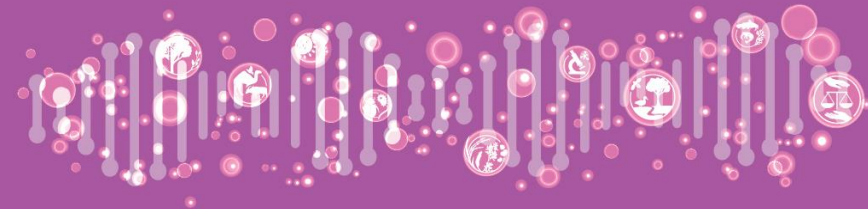
English

The BC (Biocultural) Notice is a visible notification that there are accompanying cultural rights and responsibilities that need further attention for any future sharing and use of this material or data. The BC Notice recognizes the rights of Indigenous peoples to permission the use of information, collections, data and digital sequence information (DSI) generated from the biodiversity or genetic resources associated with traditional lands, waters, and territories. The BC Notice may indicate that BC Labels are in development and their implementation is being negotiated.

Close

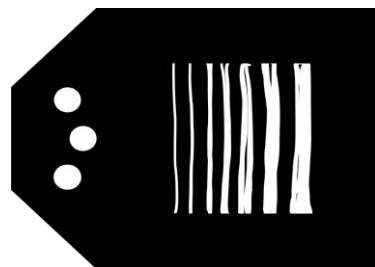


**Communities have an
Opportunity to add
appropriate provenance,
protocols and permissions**



BC Provenance

Provenance



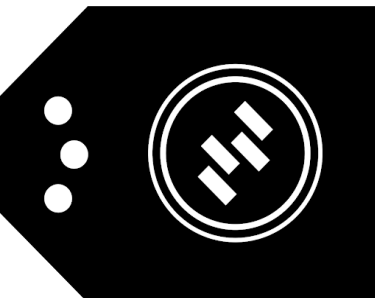
This Label is being used to affirm an inherent interest Indigenous people have in the scientific collections and data about communities, peoples, and the biodiversity found within traditional lands, waters and territories. [Community name or authorizing party] retains the right to be named and associated with it into the future. This association reflects a significant relationship and responsibility to [the species or biological entity] and associated scientific collections and data.
[Optional attribution statement]



BC Consent Verified

Protocol

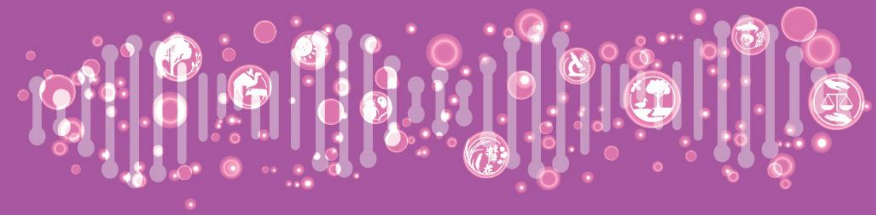
This Label is being used to verify that [community name or authorizing party] have consent conditions in place for the use of this information, collections, data, and digital sequence information. [These can be found at].



BC Research Use

Permission

This Label is being used by [community name or authorizing body] to allow this information, collection, data, and digital sequence information (DSI) to be used for unspecified research purposes. This Label does not provide permission for commercialization activities. [Optional return of research results statement]



Whakatōhea Labels in Manaaki Whenua collections database


Systematics Collections Data

Home About Search My SCD

Log in | Sign up

All

[Search help](#)

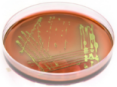


Allan Herbarium (CHR)

The largest herbarium in New Zealand specialising in plants of the New Zealand region and the South Pacific.

Number of databased records: 322,029
Number of databased specimens: 322,032

[read more...](#)




International Collection Of Microorganisms (ICMP)

A major international collection of living cultures of plant associated bacteria, and of fungi from New Zealand and the South Pacific.

Number of databased records: 23,247

[read more...](#)




National New Zealand Flax Collection (FLAX)

A living collection of over 160 provenances of *Phormium* of cultural, economic and historical interest.

Number of databased records: 84

[read more...](#)




New Zealand Arthropod Collection (NZAC)

The largest collection of New Zealand land invertebrates, with many specimens also from the South Pacific.

Number of databased records: 221,443
Number of databased specimens: 376,639

[read more...](#)

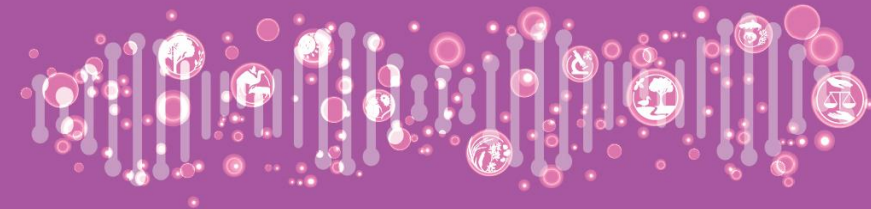


New Zealand Fungarium - Te Kohinga Hekaheka o Aotearoa (PDD)

The national reference collection of dried fungi and plant diseases for New Zealand Aotearoa, including many specimens from the Pacific and other regions.

Number of databased records: 108,778
Number of databased specimens: 108,794

[read more...](#)



Whakatōhea Labels in Manaaki Whenua collections database

Systematics Collections Data

Home About **Search** My SCD

Log in | Sign up

All * [Search help](#)

Native lands: Whakatōhea

Facets

- Main taxon**
 - [Bembidion \(Zecillenus\) albescens \(Bates\) \(15\)](#)
 - [Miridae \(14\)](#)
 - [Elytrigia pycnantha \(Godr.\) Á.Löve \(13\)](#)
 - [Cyathea cunninghamii Hook.f. \(10\)](#)
 - [Myosotis pottsiana \(L.B.Moore\)](#)
 - [Meudt, Prebble, R.J.Stanley & Thorsen \(10\)](#)
- Preferred name**
 - [Lophozonia menziesii \(Hook.f.\) Heenan & Smitten \(27\)](#)
 - [Nothofagus \(19\)](#)
 - [Bembidion \(Zecillenus\) albescens \(Bates\) \(15\)](#)
 - [Miridae \(14\)](#)
 - [Elytrigia pycnantha \(Godr.\) Á.Löve \(13\)](#)

[More...](#)

Results

Showing 1 to 500 of 1202 records

Sort by **Most relevant** **Ascending**

1 2 3 [Next page >](#)

[List view](#) [Grid view](#) [Map view](#)

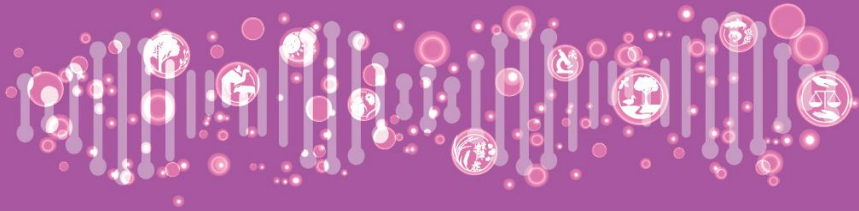
☐ Select all

☐ **CHR 365035 : Abutilon pictum (Gillies ex Hook. & Arn.) Walp.**
Data provider: CHR Collection: Herbarium Specimen type: Sheet Country: New Zealand Standard locality: Tutaeotoku [Tutaetoko], Opotiki Dist. Bay of Plenty

☐ **NZAC04179300 : Acanthosomatidae**
Data provider: NZAC Collection: NZAC Specimen type: Pinned Country: New Zealand Standard locality: Waioeka Gorge, Mangapumarumaru Tk NZ area code: Bay of Plenty

☐ **NZAC04179322 : Acanthosomatidae**
Data provider: NZAC Collection: NZAC Specimen type: Pinned Country: New Zealand Standard locality: Waioeka Gorge, Mangapumarumaru Tk NZ area code: Bay of Plenty

☐ **NZAC04179370 : Acanthosomatidae**



Maui Hudson >> Te Whakatohea



Te Whakatohea

Community | Editor | Location: Bay of Plenty, New Zealand

Te Whakatohea is an iwi located in Opotiki and the surrounds in the Bay of Plenty. With an estimated population of 16,095

Notifications 🔔

101 Labels

02 Notices

01 Connections

Labels

Projects

Connections

Members

Local Contexts Projects

Create a Project →

You can apply your Traditional Knowledge and Biocultural Labels to projects. You can create a project or a project might be shared with you by an institution or researcher. Local Contexts projects describe the context where Labels are being applied. For example, a project could include: a website, a university syllabus, a dissertation, a research publication, a dataset, a museum exhibition, an archival record, an item in a collection, a library database, a photography collection, a voucher specimen and/or metadata about a record.

When you create a Local Contexts Project, you will be asked for project details and contacts, and have the option to add metadata.

Sort by: **All** | Labels | Notices | Created | Contributed

Biological specimens housed at Manaaki Whenua: Te rohe o Whakatōhea

Jun 29, 2022 | Samples | Public

Created: Aaron Wilton at Manaaki Whenua - Landcare Research | Institution

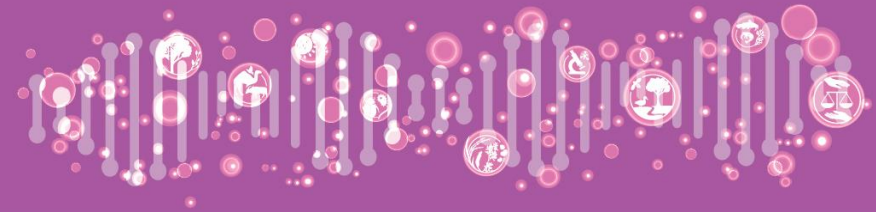
Project Link ↗

Apply Labels +

View →

Show More ▾





Whakatōhea Labels in collections database

Systematics Collections Data

[Home](#)
[About](#)
[Search](#)
[My SCD](#)

[Log in](#) | [Sign up](#)

CHR 469903 – Libocedrus plumosa (D.Don) Sarg.

Data provider:	Allan Herbarium
Barcode:	CHR 469903
Specimen type:	Sheet
Database record added:	01 March 1995
Database record updated:	18 June 2022

Components

Primary component





Active identification	
Determined name:	Libocedrus plumosa (D.Don) Sargent
Determiner:	Druce AP
Determination date:	1979-04 (Verbatim: APR-1979)
Preferred name:	Libocedrus plumosa (D.Don) Sarg.
Division:	Pinophyta
Class:	Pinatae
Order:	Coniferales
Family:	Cupressaceae
Identification type:	Determination

Permissions

Project permits


Project title:
[Biological specimens housed at Manaaki Whenua: Te rohe o Whakatōhea](#)

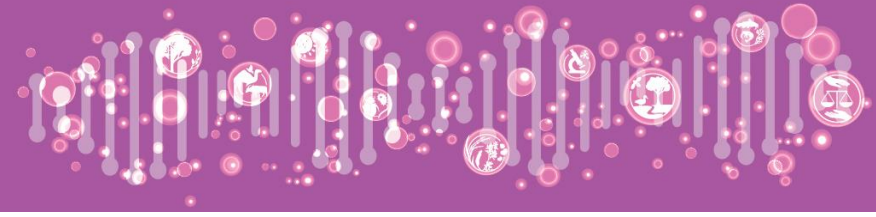
Reference:
 Local Contexts - Whakatōhea

- 
 BC Provenance (BC P) | Nā wai/ Nō hea
- 
 BC Research Use (BC R) | Rangahau
- 
 BC Open to Collaboration (BC CB) | Kotahitanga
- 
 BC Open to Commercialization (BC OC) | Umanga

Project title:
[Local Contexts - Allan Herbarium \(CHR\)](#)

Reference:
 CHR Collection - Local Contexts


 Biocultural (BC) Notice




Whakatōhea Labels in collections database

Systematics Collections Data

[Home](#)
[About](#)
[Search](#)
[My SCD](#)

CHR 365035 – Abutilon darwinii Hook.f.



Data provider:	Allan Herbarium
Barcode:	CHR 365035
Specimen type:	Sheet
Database record added:	27 January 2015
Database record updated:	18 June 2022

[Log in](#) | [Sign up](#)

Components

Primary component

Active identification





Determined name:	Abutilon darwinii × pictum
Determiner:	C.J. Webb
Determination date:	1980-08-04 (Verbatim: 4 August 1980)
Preferred name:	Abutilon darwinii Hook.f.

Permissions

Select permits

Project title:
Biological specimens housed at Manaaki Whenua: Te rohe o Whakatohea [↗](#)

Reference:
Local Contexts - Whakatohea

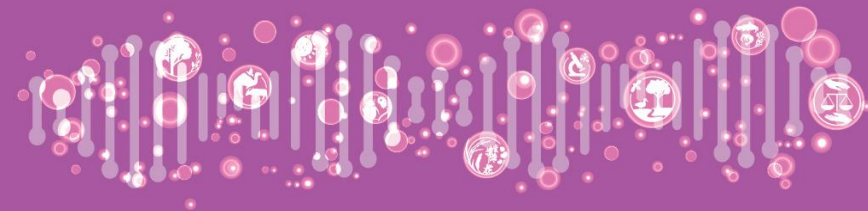
-  BC Provenance (BC P) | Nā wai/ Nō hea
-  BC Research Use (BC R) | Rangahau
-  BC Open to Collaboration (BC CB) | Kotahitanga
-  BC Open to Commercialization (BC OC) | Umanga

Project title:
[Local Contexts - Allan Herbarium \(CHR\)](#) [↗](#)

Reference:
CHR Collection - Local Contexts

BC

Biocultural (BC) Notice



Science Collaborations

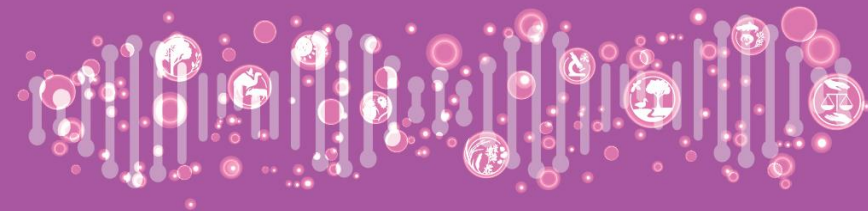


- Technical Implementation Working Group



- ERGA
- Maine E DNA
- GEOME
- DivSeek
- Datacite





Dr. Janette Hamilton-Pearce

Local Contexts Programme Lead

support@localcontexts.org



Local
Contexts

Join our working groups

[Cultural Institution Working Group](#)

[Indigenous Community Working Group](#)

[Technical Working Group](#)

Follow us on social media



@LocalContexts



@LocalContextsOrg





Image – James Francis Snr, Penobscot Nation