

A land degradation assessment has been conducted for Chongoroi municipality in Benguela province, Angola. A land cover legend was prepared using LCML/LCCS v3 based on key degradation processes identified in the area. Land cover maps were developed using the legend for 2001, 2015, 2018 and 2021. Land degradation assessment was conducted, following the good practice guidance v2 of the UNCCD and using the SEPAL SDG 15.3.1 module, for baseline (2001 to 2015) and reporting periods of 2015 to 2018 and 2018 to 2021. The total degraded area and the percentage change of degradation between baseline and reporting periods were obtained using QGIS.

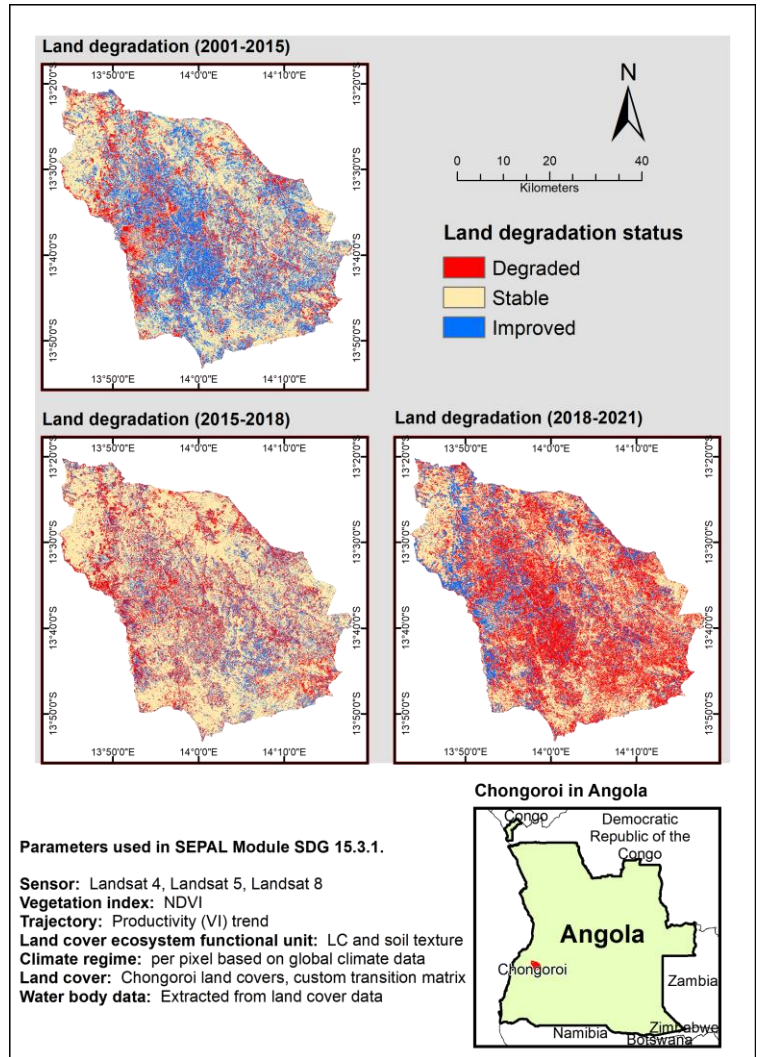


Figure 1: Land degradation assessment maps of Chongoroi, Angola¹

Table 1: Land degradation statistics by land cover

Land cover class (excluding water bodies)	Baseline (2001-2015)				Monitoring (2015-2018)		Monitoring (2018-2021)	
	Area (Km ²)	Degraded (%)	Stable (%)	Improved (%)	Area (Km ²)	Degraded (%)	Area (Km ²)	Degraded (%)
Bare soils	185	7	25	68	227	27	206	45
Built-up lands	125	2	29	69	116	40	78	32
Croplands	87	48	17	35	106	44	91	50
Forests	1 275	17	82	1	1 279	13	1 243	34
Grasslands	143	12	25	63	74	24	124	56
Rocks	60	1	61	38	42	9	57	36
Shrublands	235	21	29	50	274	38	337	48
Wetlands	64	5	92	3	52	34	38	39
Total	2 173	16	62	22	2 169	21	2 174	39

Key findings

- From 2001 to 2021, an increasing trend of land degradation in Chongoroi was observed.
- The highest degraded areas in baseline and monitoring periods were observed in forests, followed by shrublands.

Prepared by Jose Caela, Rashed Jalal, Leonardo Monteiro, Cesar Pakissi, Fatima Mushtaq, Amit Ghosh, Gianluca Franceschini, Shrijwal Adhikari and Matieu Henry in support to Sustainable Land Management in target landscapes of Central Angola (GCP/ANG/055/GFF), Food and Agriculture Organization of United Nations, Rome, Italy.

¹ GAUL 2015. The boundaries and names shown, and the designations used on these map(s) do not express any opinion whatsoever on the part of FAO concerning the legal status of any country, territory, city or area or of its authorities, or concerning the delimitation of its frontiers and boundaries. Dashed lines on maps represent approximate border lines for which there may not yet be full agreement.