

Crop type mapping in East Jabalia, North Gaza, Palestine for the summer season (2022)



Source: United Nations. 2020. Map of the world [online].

Cropland area plays an important role in Gaza's agricultural production and food security. However, the shortage of water resource due to climate change and unsuitable utilization poses heavy pressure on agricultural water use in East Jabalia, North Gaza. Crop type map is essential to rationalize water use in North Gaza. Very high-resolution image (i.e., WorldView-2) is used for the crop classification for the time period of July to September 2022. The random forest classification algorithm is used to classify crop types using SEPAL platform.

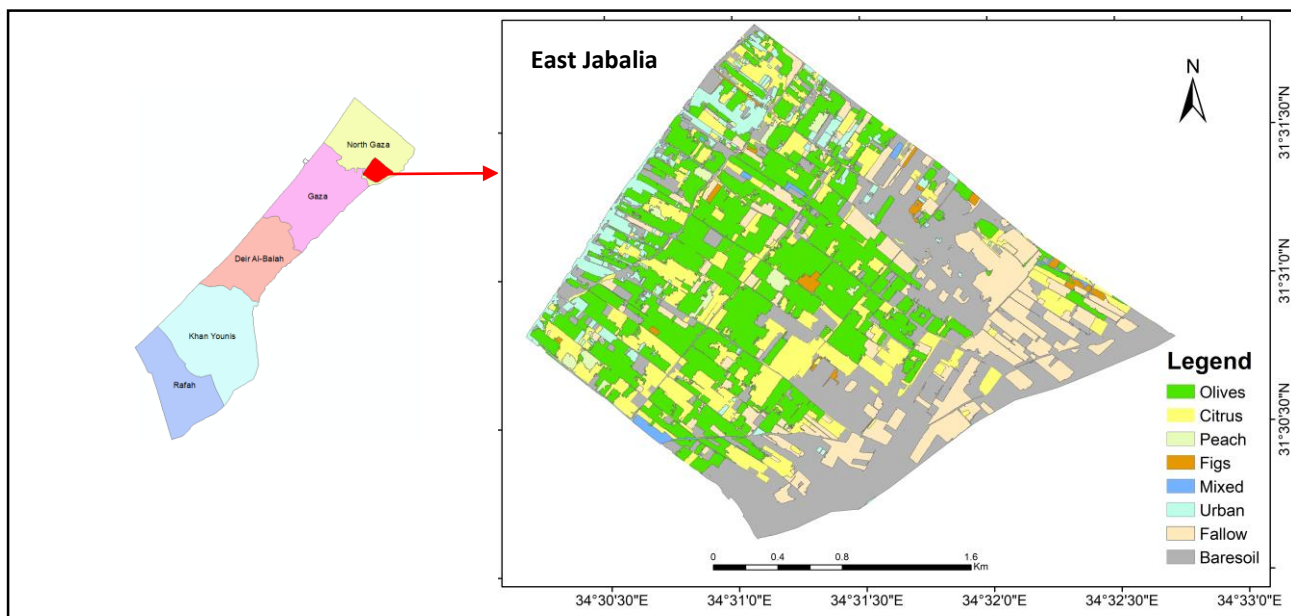


Figure 1: Crop type map of East Jabalia, North Gaza , Palestine

Table 1: Crop area statistics (ha) for East Jabalia, North Gaza Palestine

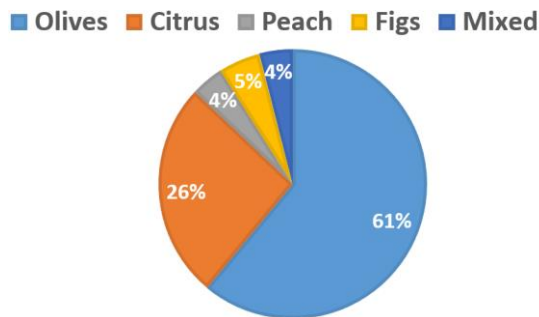


Figure 2: Percentage distribution of the crop type area

Crop type	Area (ha)	Percentage (%)
Olives	193.8	61
Citrus	76.5	26
Peach	14.8	4
Figs	15.5	5
Mixed	13.2	4
Total	313	100

*Mixed includes two or more than two crops among peach, olives citrus, and Fig.

Prepared by. Hesham Aboelsoud, Gautam Dadhich, Hana Salah, Masoud Keshta, Shaffeeq Alarawi, Nader AbuSaada, Rafael DeLaSota, and Matieu Henry in support to remote sensing and GIS analysis to support the Water Management and Adaptation of Agriculture to climate change in Northern North Gaza (GCP/GAZ/017/FRA), Food and Agriculture Organization of United Nations, Rome, Italy.

Disclaimer: The boundaries and names shown, and the designations used on these map(s) do not express any opinion whatsoever on the part of FAO concerning the legal status of any country, territory, city or area or of its authorities, or concerning the delimitation of its frontiers and boundaries. Dashed lines on maps represent approximate border lines for which there may not yet be full agreement.