



Source: United Nations. 2020. Map of the world [online].

The 2021 land cover map of East Jabalia, North Gaza, Palestine has been done to support the Water Management and Adaptation of Agriculture to climate change. The samples were trained with a machine learning model in Google Earth Engine, and Very high-resolution image (i.e., WorldView-2) satellite imagery were classified. The land cover was obtained at 0.5 m spatial resolution.

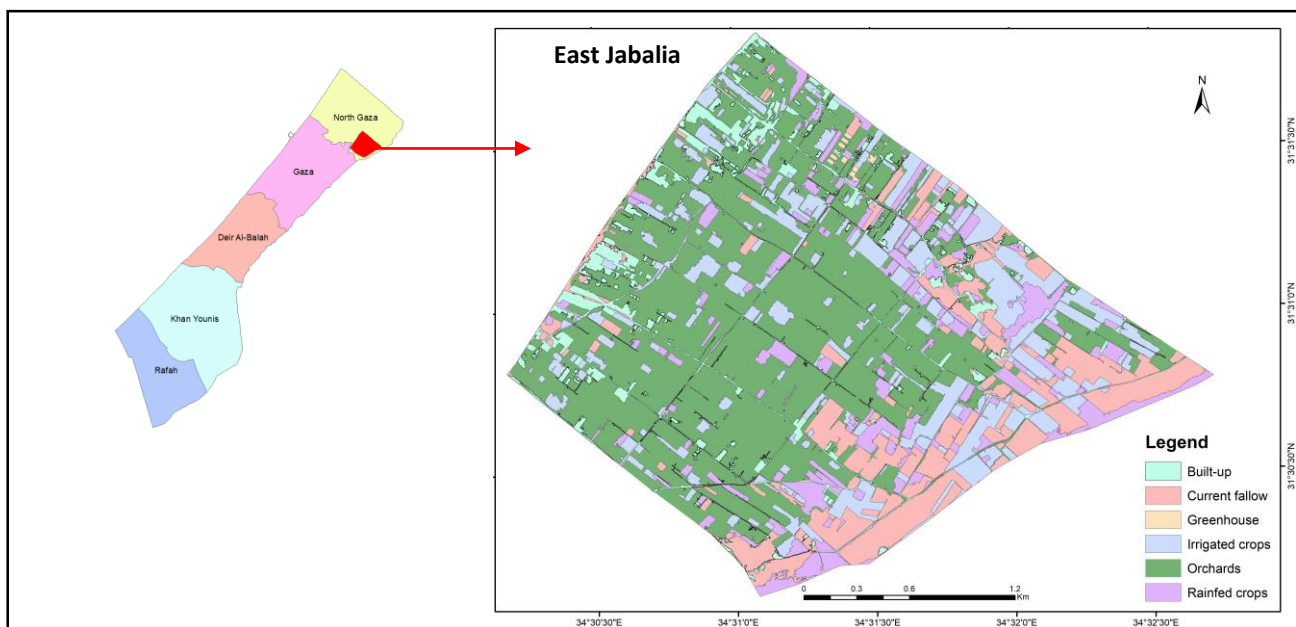


Figure 1: Land cover map of East Jabalia, North Gaza, Palestine

■ Built-up ■ Current fallow ■ Greenhouses
■ Irrigated crops ■ Orchards ■ Rainfed crops

Table 1: Land cover statistics (ha) for East Jabalia, North Gaza Palestine

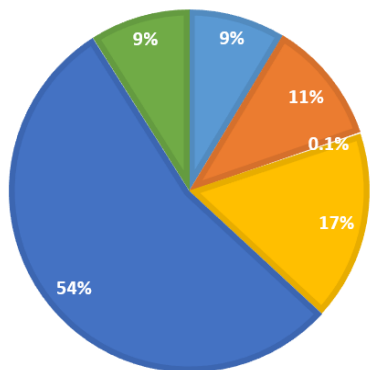


Figure 2: Percentage distribution of the land cover area

Land cover	Area (ha)	Percentage (%)
Built-up	50	8.7
Current fallow	64	11.1
Greenhouse	1	0.2
Irrigated crops	98	17
Orchards	313	54.2
Rainfed crops	52	9
Total	580	100