



Source: United Nations. 2020. Map of the world [online].

The Indonesian Ministry of Agriculture is formulating a master plan to identify goals, targets, and develop a roadmap that aims at promoting the sustainable development of the agricultural sector in Indonesia. As geospatial information is essential for the implementation of the master plan, the assessment was performed by FAO Geospatial Unit at Land and Water Division (NSL) to generate the land cover of Pupuan in Indonesia.

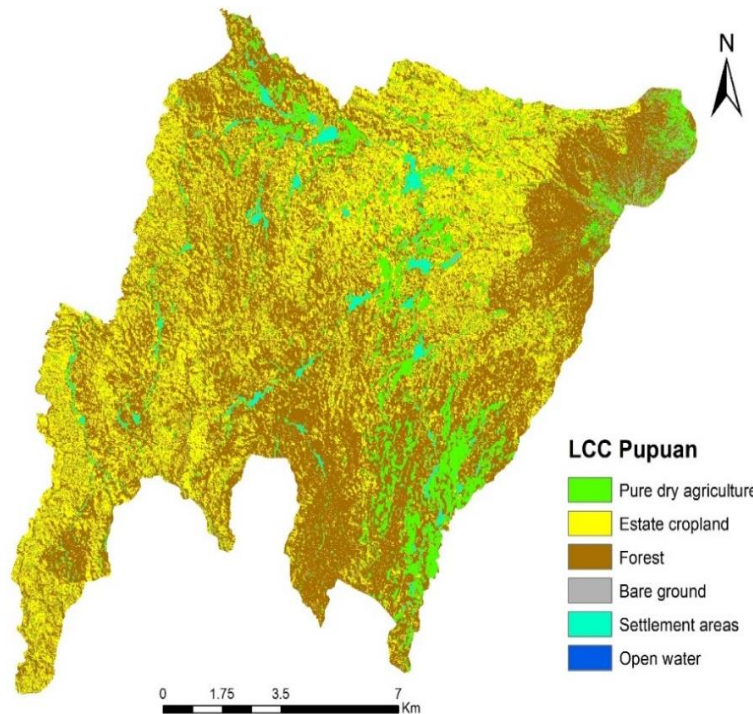


Figure 1: Land cover map for Pupuan, Indonesia (2021)*

Table 1: Land cover statistics (ha) in Pupuan, Indonesia

Class name	Total area (ha)	Percentage (%)
Pure dry agriculture	1934	10.8
Estate cropland	6 159	34.4
Forest	9 147	51.2
Bare ground	384	2.2
Settlement areas	237	1.3
Open water	8	0.05
Total	17 870	100



Data used

- Sentinel 2 satellite image was used for the land cover map for January to December 2021.
- SEPAL platform is used for classification processing.
- For training data, Collect Earth Online was used.
- The land cover legend was derived from the legend used by the Ministry of Environment and Forestry of Indonesia.

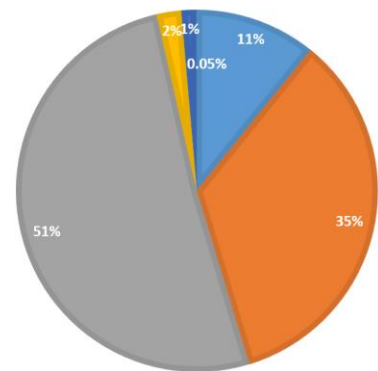


Figure 2: Percentage distribution of the land cover area