

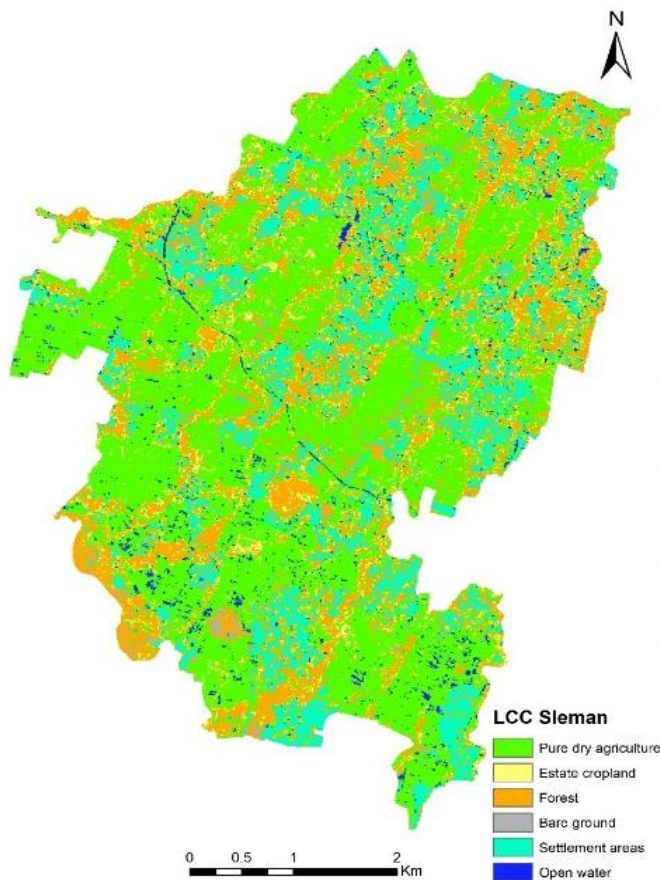


Source: United Nations. 2020. Map of the world [online].

The Indonesian Ministry of Agriculture is formulating a master plan to identify goals, targets, and develop a roadmap that aims at promoting the sustainable development of the agricultural sector in Indonesia. As geospatial information is essential for the implementation of the master plan, the assessment was performed by FAO Geospatial Unit at Land and Water Division (NSL) to generate the land cover of Sleman in Indonesia.

Table 1: Land cover area statistics (ha) for Sleman, Indonesia

Land cover	Total area (ha)	Percentage (%)
Pure dry agriculture	1 359	51.01
Estate cropland	210	7.9
Forest	597	22.4
Bare ground	18	0.7
Settlement areas	416	15.6
Open water	62	2.3
Total	2 666	100



Legend for Figure 2:

- Pure dry agriculture (Blue)
- Estate cropland (Orange)
- Forest (Grey)
- Bare ground (Yellow)
- Settlement areas (Cyan)
- Open water (Green)

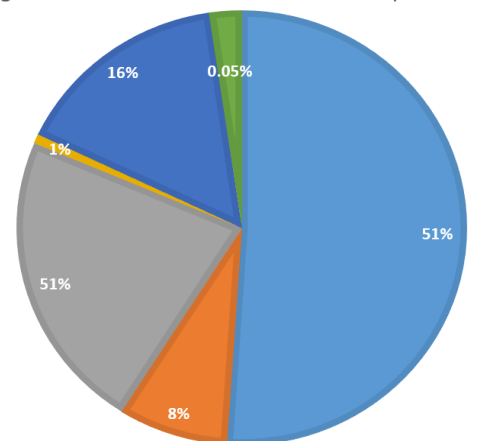


Figure 1: Land cover map of Sleman, Indonesia, 2021*

Data used

- Sentinel 2 satellite image is used for the land cover map for January to December 2021.
- SEPAL platform is used for classification processing.
- For training data, Collect Earth Online is used.
- The land cover legend is derived from the legend used by the Ministry of Environment and Forestry of Indonesia.

Figure 2: Percentage distribution of the crop type area