



The land cover map (2022) of Fezzan is prepared to support decision making to improve crop and water productivity. The training data of various land cover classes collected using high resolution imageries and trained using supervised classification in SEPAL with Sentinel-2 satellite imageries. The land cover is obtained at 10 m spatial resolution. The results should be further enhanced with ground validation data.

Source: United Nations. 2020. Map of the world [online]. [Cited July 2022]

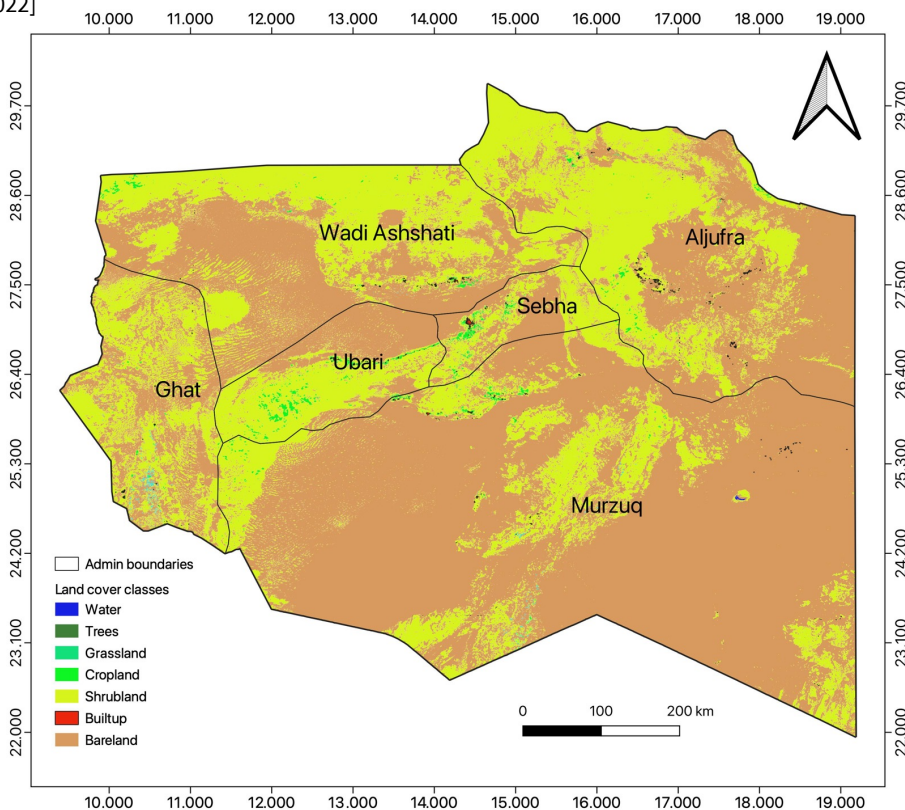


Figure 1: Land cover map for Fezzan, Libya (2021-2022)<sup>1</sup>

Table 1: Land area statistics (ha) by land categories at district level in Fezzan, Libya

District	Total land area (ha)	Water	Trees	Grassland	Cropland	Shrubland	Builtup	Bareland
Wadi Ashshati	10 176 191	2	109	17	8 442	43 24 723	6 909	52 29 420
Aljufra	11 601 364	233	49	146	12 604	48 11 667	11 960	61 44 396
Sebha	1 721 922	30	110	28	52 982	7 94 198	6 288	8 67 729
Ubari	3 242 765	30	94	5	7 872	1 617 387	3487	1 480 008
Murzuq	28 081 733	3 444	750	12	29 566	5 140 048	9 093	23 225 726
Ghat	5 083 983	16	51	2	1 295	2 028 005	1878	3 010 015
<b>Total</b>	<b>59 907 958</b>	<b>3 755</b>	<b>1 163</b>	<b>210</b>	<b>112 763</b>	<b>18 716 028</b>	<b>39 615</b>	<b>39 957 294</b>

**Prepared by** Gautam Dadhich, Hesham Aboelsoud and Matieu Henry. Bashir Nwer, Faycel Chenini. Monitoring, evaluation and rationalization of water use for Agriculture Sector in Libya (OSRO/LIB/002/ITA), Food and Agriculture Organization of United Nations, Rome, Italy.

<sup>1</sup>**GADM:** The boundaries and names shown, and the designations used on these map(s) do not express any opinion whatsoever on the part of FAO concerning the legal status of any country, territory, city or area or of its authorities, or concerning the delimitation of its frontiers and boundaries.