



Source: United Nations. 2020. Map of the world [online]. [Cited July 2022]

Libya is characterized by water scarcity. Identifying agriculture areas is essential to improve crop and water productivity in Libya. Crop mask is prepared without ground data as proxy identification of agriculture areas for Fezzan, Libya. Crop varieties (Cereals, Tubers, Forage, Fruit, Vegetables and other crops) are mapped using NDVI time series derived from Sentinel-2 satellite imagery from Sep. 2021 to Apr. 2022 using Google Earth Engine. The map is prepared to support field data collection. The results should be further enhanced with ground validation data.

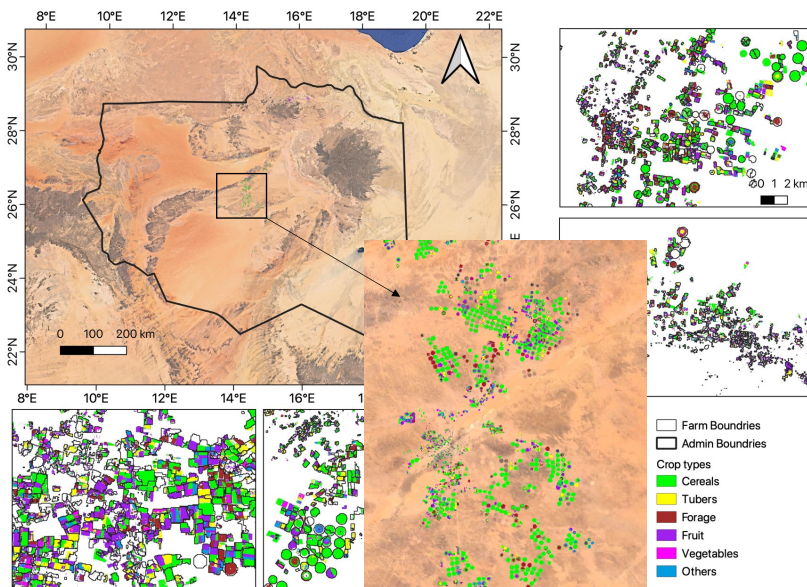


Figure 1: Crop map for Fezzan, Libya (2021-2022)¹

Table 1: Area statistics (ha) of crop types at district level in Fezzan, Libya

District	Total land area (ha)	Cropland Area (ha)	Cereals	Tubers	Forage	Fruit	Vegetables	Other crops
Wadi Ashshati	10 176 191	8 442	563	-	-	4 472	-	3 406
Aljufra	11 601 364	12 604	-	-	-	12 604	-	-
Sebha	1 721 922	52 982	25 502	5 677	5 084	11 225	1 912	3 579
Ubari	3 242 765	7 872	2 604	1 197	-	3 268	802	-
Murzuq	28 081 733	29 566	16 607	1 843	4 141	3 891	1 233	1 849
Ghat	5 083 983	1 295	1 295	-	-	-	-	-
Total	59 907 958	112 763						

Prepared by Gautam Dadhich, Hesham Aboelsoud and Matieu Henry. Bashir Nwer, Faycel Chenini. Monitoring, evaluation and rationalization of water use for Agriculture Sector in Libya (OSRO/LIB/002/ITA), Food and Agriculture Organization of United Nations, Rome, Italy.

¹**GADM**: The boundaries and names shown, and the designations used on these map(s) do not express any opinion whatsoever on the part of FAO concerning the legal status of any country, territory, city or area or of its authorities, or concerning the delimitation of its frontiers and boundaries.